

## Title: Cattle for beef production on NI farms April 2023

Source: Livestock and Meat Commission/APHIS data

Date: 02 May 2023

Contact: bulletin@lmcni.com

Website: www.lmcni.com

Market Information Department



### Total cattle for beef production

Age (months)	2021	2022	2023	2022/2023	2021/2023
0-6	203,565	192,847	192,327	-0.3%	-5.5%
6-12	186,605	189,014	190,404	+0.7%	+2.0%
12-18	206,634	208,964	200,827	-3.9%	-2.8%
18-24	139,934	138,839	139,280	+0.3%	-0.5%
24-30	102,556	105,589	102,896	-2.6%	+0.3%
30 +	289,814	292,850	284,667	-2.8%	-1.8%

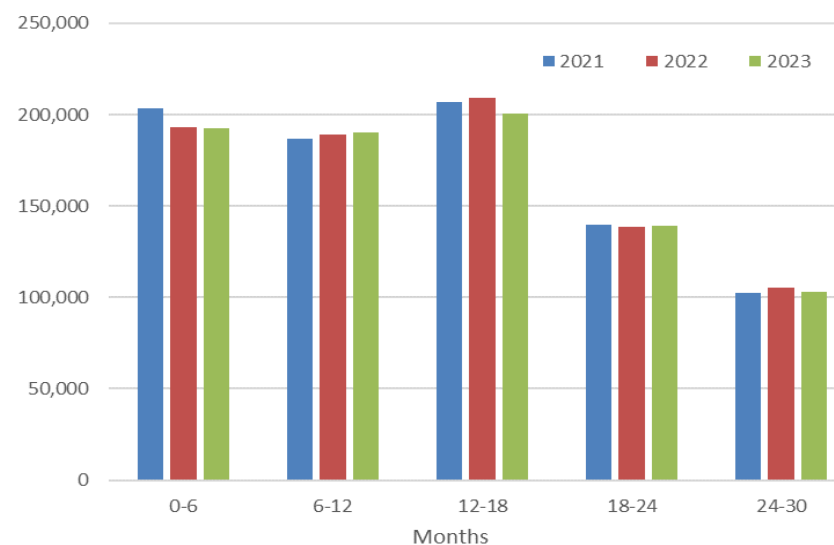
### Beef sired male cattle for beef production

Age (months)	2021	2022	2023	2022/2023	2021/2023
0-6	90,047	87,447	89,530	+2.4%	-0.6%
6-12	85,000	87,279	89,349	+2.4%	+5.1%
12-18	92,568	93,300	91,697	-1.7%	-0.9%
18-24	59,525	58,074	59,202	+1.9%	-0.5%
24-30	35,222	36,010	37,109	+3.1%	+5.4%
30 +	14,587	15,029	15,456	+2.8%	+6.0%

### Beef sired female cattle for beef production

Age (months)	2021	2022	2023	2022/2023	2021/2023
0-6	87,108	85,452	86,511	+1.2%	-0.7%
6-12	82,081	84,728	87,195	+2.9%	+6.2%
12-18	94,950	95,243	93,955	-1.4%	-1.0%
18-24	69,950	69,557	70,345	+1.1%	+0.6%
24-30	60,144	62,144	58,112	-6.5%	-3.4%
30 +	273,417	275,849	267,105	-3.2%	-2.3%

### Total cattle for beef production



### Dairy sired male cattle for beef production

Age (months)	2021	2022	2023	2022/2023	2021/2023
0-6	26,410	19,948	16,286	-18.4%	-38.3%
6-12	19,524	17,007	13,860	-18.5%	-29.0%
12-18	19,116	20,421	15,175	-25.7%	-20.6%
18-24	10,459	11,208	9,733	-13.2%	-6.9%
24-30	7,190	7,435	7,675	+3.2%	+6.7%
30+	1,810	1,972	2,106	+6.8%	+16.4%

LMC does not guarantee the accuracy or completeness of any third party information provided in or included with this publication.

LMC hereby disclaims any responsibility for error, omission or inaccuracy in the information, misinterpretation or any other loss, disappointment, negligence or damage caused by reliance on third party information.