

Title: Cattle for beef production on NI farms May 2022

Source: Livestock and Meat Commission/APHIS data
 Date: 01 June 2022
 Contact: bulletin@lmcni.com
 Website: www.lmcni.com

Market Information Department



Total cattle for beef production

Age (months)	2020	2021	2022	2021/2022	2020/2022
0-6	200,974	231,282	227,234	-1.8%	+13.1%
6-12	145,930	162,548	165,632	+1.9%	+13.5%
12-18	229,687	230,883	230,802	-0.0%	+0.5%
18-24	105,840	119,618	118,306	-1.1%	+11.8%
24-30	124,202	115,370	114,177	-1.0%	-8.1%
30 +	291,330	287,839	288,954	+0.4%	-0.8%

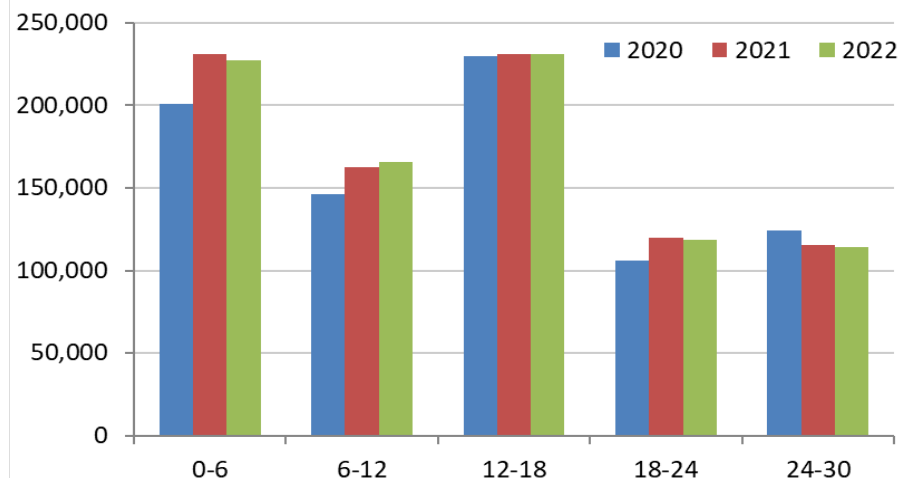
Beef sired male cattle for beef production

Age (months)	2020	2021	2022	2021/2022	2020/2022
0-6	92,278	104,978	105,582	+0.6%	+14.4%
6-12	64,028	71,906	74,518	+3.6%	+16.4%
12-18	107,124	105,181	105,252	+0.1%	-1.7%
18-24	43,464	49,651	48,476	-2.4%	+11.5%
24-30	46,476	40,712	39,724	-2.4%	-14.5%
30 +	16,255	14,180	14,258	+0.6%	-12.3%

Beef sired female cattle for beef production

Age (months)	2020	2021	2022	2021/2022	2020/2022
0-6	90,039	101,438	102,781	+1.3%	+14.2%
6-12	61,218	69,688	72,898	+4.6%	+19.1%
12-18	107,560	107,955	107,429	-0.5%	-0.1%
18-24	50,847	58,451	57,844	-1.0%	+13.8%
24-30	71,501	68,217	67,895	-0.5%	-5.0%
30 +	272,411	271,697	272,652	+0.4%	+0.1%

Total cattle for beef production



Dairy sired male cattle for beef production

Age (months)	2020	2021	2022	2021/2022	2020/2022
0-6	18,657	24,866	18,871	-24.1%	+1.1%
6-12	20,684	20,954	18,216	-13.1%	-11.9%
12-18	15,003	17,747	18,121	+2.1%	+20.8%
18-24	11,529	11,516	11,986	+4.1%	+4.0%
24-30	6,225	6,441	6,558	+1.8%	+5.3%
30+	2,664	1,962	2,044	+4.2%	-23.3%

LMC does not guarantee the accuracy or completeness of any third party information provided in or included with this publication.

LMC hereby disclaims any responsibility for error, omission or inaccuracy in the information, misinterpretation or any other loss, disappointment, negligence or damage caused by reliance on third party information.