

Title: Cattle for beef production on NI farms January 2023

Source: Livestock and Meat Commission/APHIS data

Date: 01 February 2023

Contact: bulletin@lmcni.com

Website: www.lmcni.com

Market Information Department



Total cattle for beef production

Age (months)	2021	2022	2023	2022/2023	2021/2023
0-6	122,055	147,765	148,564	+0.5%	+21.7%
6-12	247,352	255,997	248,521	-2.9%	+0.5%
12-18	143,438	139,868	141,092	+0.9%	-1.6%
18-24	196,154	201,768	193,867	-3.9%	-1.2%
24-30	70,655	68,858	66,973	-2.7%	-5.2%
30 +	299,005	299,407	292,773	-2.2%	-2.1%

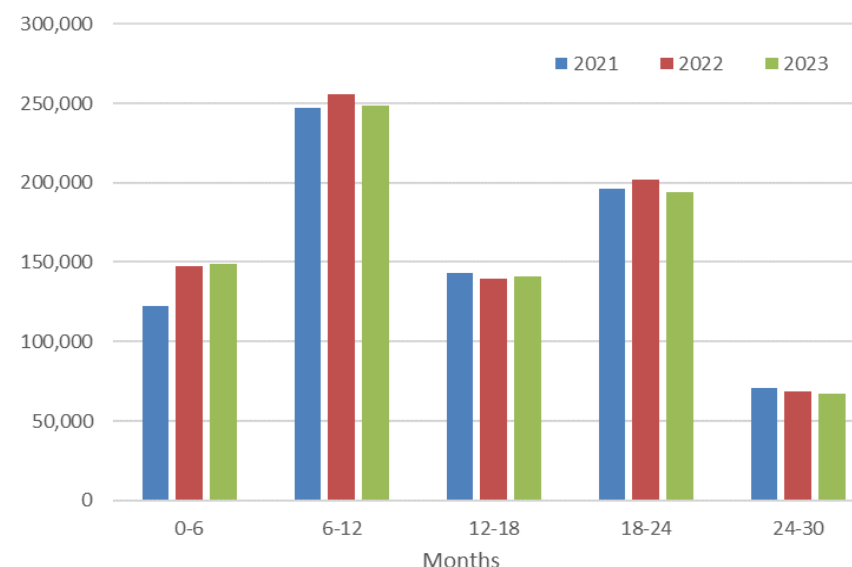
Beef sired male cattle for beef production

Age (months)	2021	2022	2023	2022/2023	2021/2023
0-6	50,708	63,924	66,596	+4.2%	+31.3%
6-12	116,706	120,436	118,605	-1.5%	+1.6%
12-18	60,736	58,687	60,851	+3.7%	+0.2%
18-24	86,080	86,199	83,647	-3.0%	-2.8%
24-30	23,161	21,664	22,205	+2.5%	-4.1%
30 +	17,054	16,784	17,128	+2.0%	+0.4%

Beef sired female cattle for beef production

Age (months)	2021	2022	2023	2022/2023	2021/2023
0-6	48,734	62,580	65,016	+3.9%	+33.4%
6-12	114,268	117,161	115,742	-1.2%	+1.3%
12-18	61,357	60,606	63,853	+5.4%	+4.1%
18-24	101,289	104,862	100,378	-4.3%	-0.9%
24-30	39,302	40,127	37,358	-6.9%	-4.9%
30 +	280,045	280,700	273,577	-2.5%	-2.3%

Total cattle for beef production



Dairy sired male cattle for beef production

Age (months)	2021	2022	2023	2022/2023	2021/2023
0-6	22,613	21,261	16,952	-20.3%	-25.0%
6-12	16,378	18,400	14,174	-23.0%	-13.5%
12-18	21,345	20,575	16,388	-20.3%	-23.2%
18-24	8,785	10,707	9,842	-8.1%	+12.0%
24-30	8,192	7,067	7,410	+4.9%	-9.5%
30+	1,906	1,923	2,068	+7.5%	+8.5%

LMC does not guarantee the accuracy or completeness of any third party information provided in or included with this publication.

LMC hereby disclaims any responsibility for error, omission or inaccuracy in the information, misinterpretation or any other loss, disappointment, negligence or damage caused by reliance on third party information.