



# **MONTHLY PERFORMANCE REPORT**

**June 2020**

## Service Achievements – Disclosures June 2020

AccessNI processed 7,782 disclosure certificates<sup>1</sup>. Information was disclosed on 555 certificates<sup>2</sup>.

Type	Number processed	Information disclosed
Basic	1645	40
Standard	368	53
Enhanced	5769	462

This month AccessNI achieved against our performance targets:

Target	Achieved	Average days to issue
99% Basics countersigned by RB issued within 7 days	100%	1 day
95% of Basics applied for by citizen issued within 14 days	99.7%	3 days
99% Standards issued within 7 days	100%	1 day
70% Enhanced issued within 10 days	91.2%	3 days
95% Enhanced issued within 21 days	97.3%	
98% of enhanced issued within 28 days	98.5%	

<sup>1</sup> Volumes were considerably down on normal June figures due to Covid-19 pandemic.

<sup>2</sup> The information disclosed number can include cases processed before June 2020 but which have been printed and issued in that month.

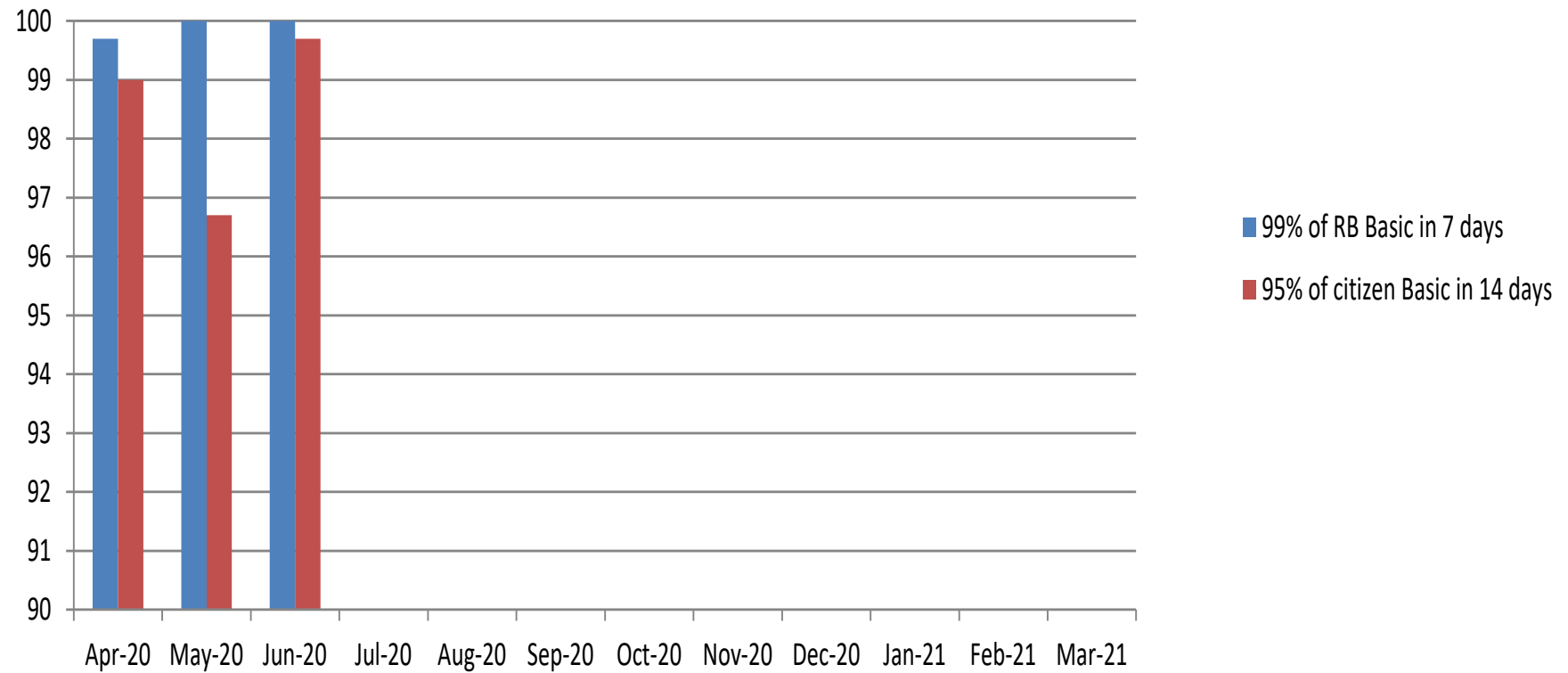
## **This month AccessNI also;**

- Issued 60% of certificates by digital means and 40% by paper;
- Filtered old and minor offences from 48 standard and 378 enhanced certificates;
- Made 29 auto-referrals of certificates with criminal record information to the Independent Reviewer;
- Referred 11 requests from applicants to have the criminal record information on their certificate reviewed to the Independent Reviewer;
- Made 77 referrals to the UK Central Authority for the exchange of criminal record information in respect of EU nationals seeking to work with children in Northern Ireland;
- Upheld 0 substantive disputes about criminal record information disclosed on certificates;
- Referred 1,512 applications for enhanced certificates to PSNI and 253 to other police forces across the UK to find out if those forces had information about the applicant that should be included in the certificate. PSNI made 10 disclosures of information for inclusion in AccessNI certificates;
- Dealt with 51 phone calls transferred from Nidirect; and
- Made 3 compliance “visits” (via on-line technology) to Registered and Responsible Bodies. The low number is due to the Covid-19 pandemic.

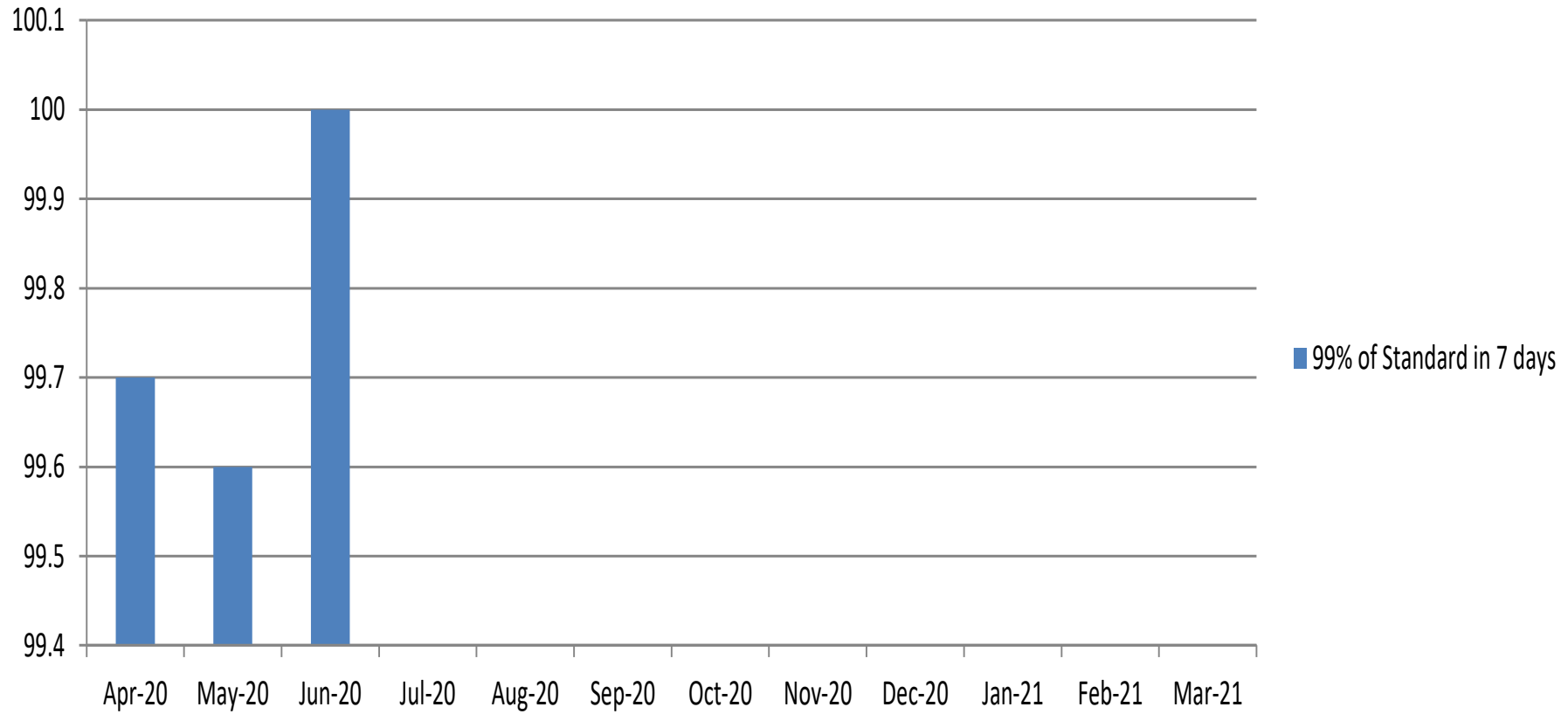
## Monthly summary table

	Jun-20	%June -19	Total 19/20	%19/20
<b>Applications Received</b>				
Basic	1,716	-38.30%	4461	-45.20%
Standard	392	9.40%	1053	-21.20%
Enhanced	5,241	-48.50%	14797	-49.70%
<b>Total</b>	<b>7,349</b>	<b>-44.90%</b>	<b>20,311</b>	<b>-47.70%</b>
<b>Applications Processed</b>				
Basic	1,645		4209	
Standard	368		1003	
Enhanced	5,769		15840	
<b>Total</b>	<b>7,782</b>		<b>21052</b>	

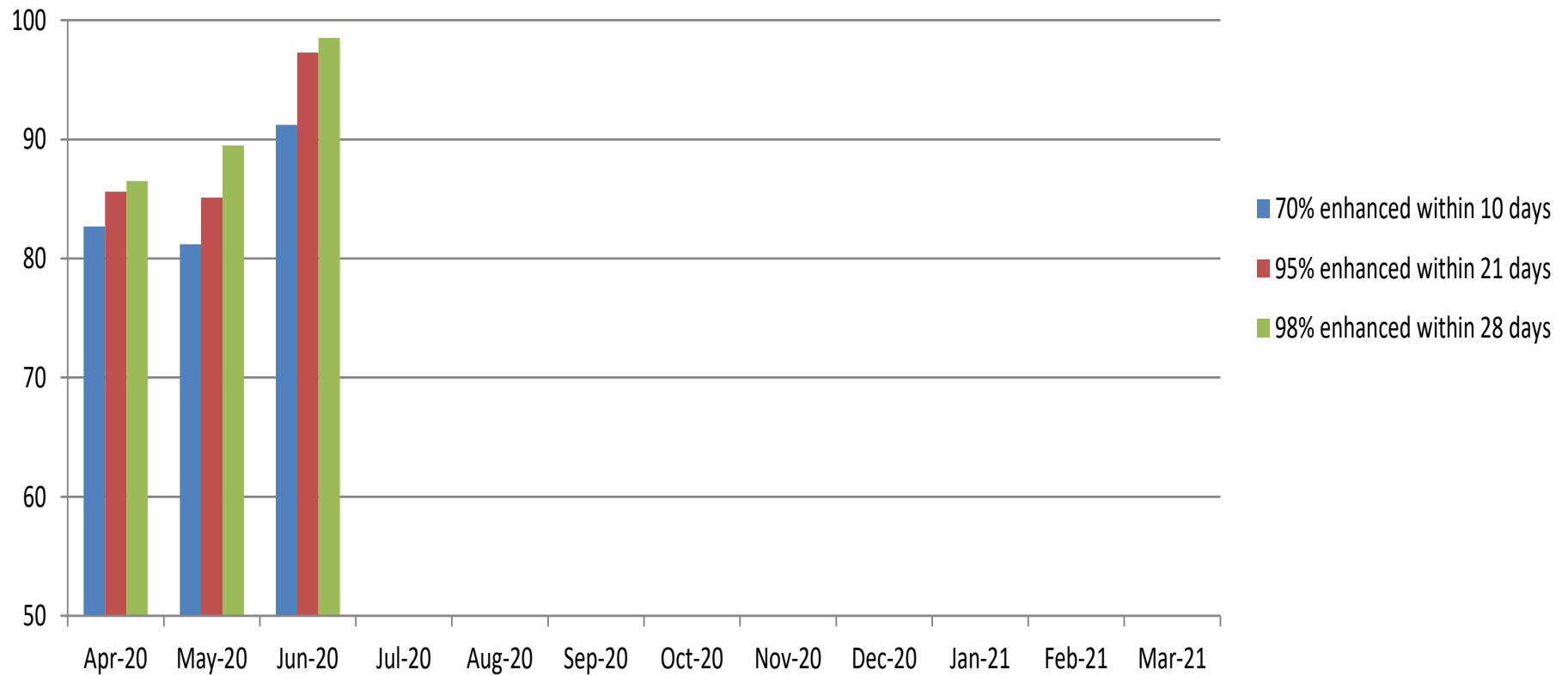
## Issue of basic certificates against targets



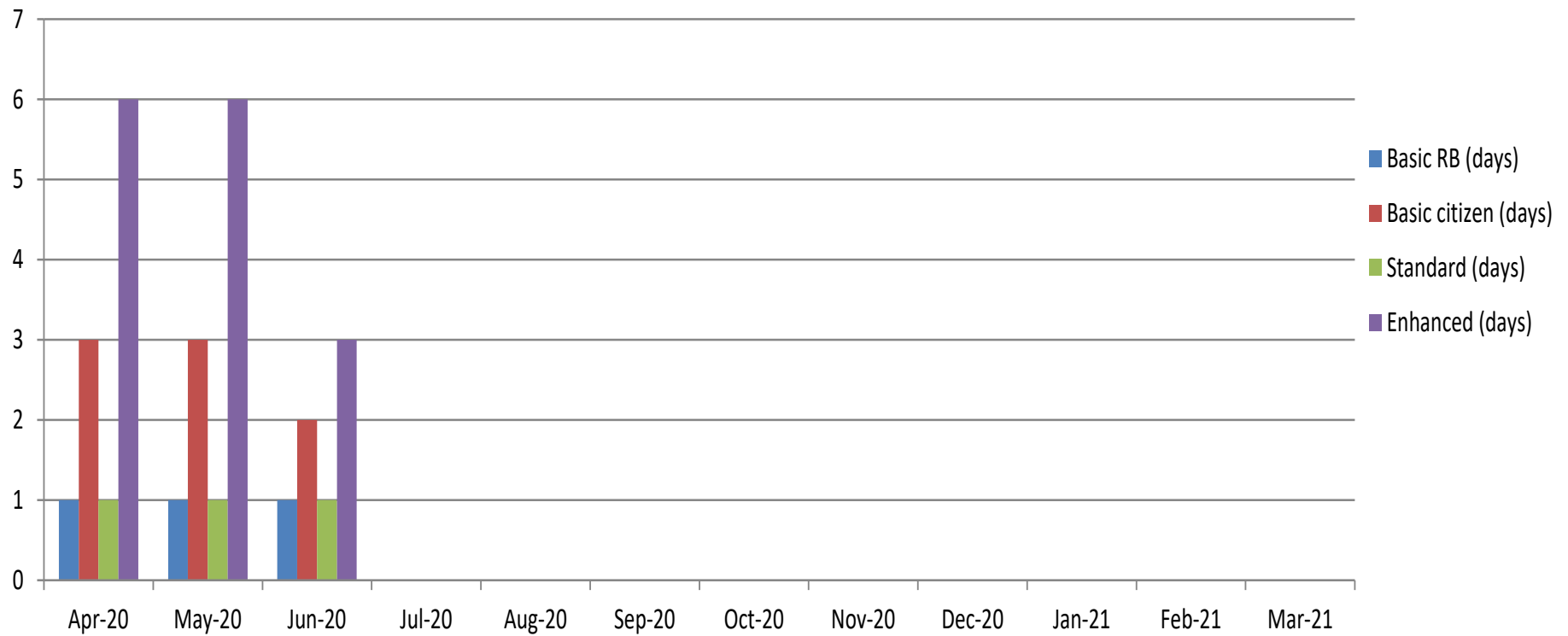
## Issue of standard certificates against target



## Issue of enhanced checks against targets

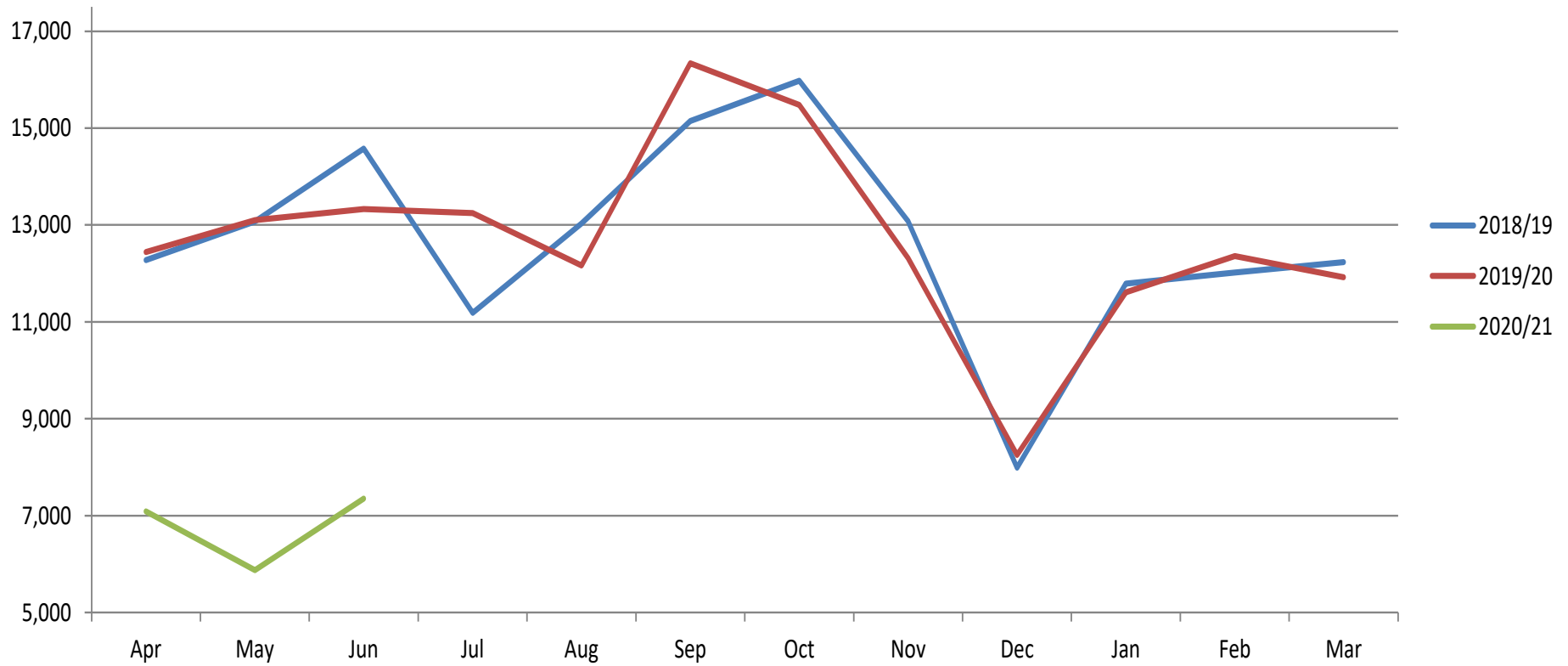


## Average number of days to issue a certificate





### Monthly flow of applications received over last 3 years



Monthly flow of applications processed for last 3 years

