

DEADWEIGHT CATTLE TRADE

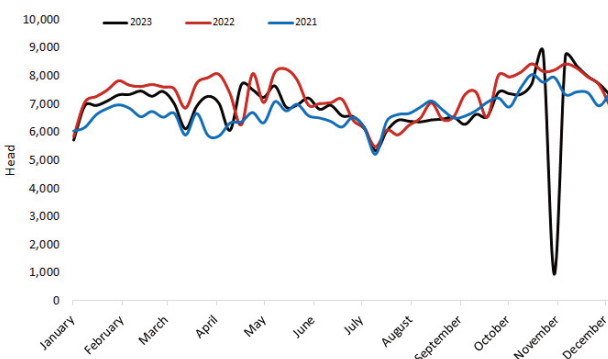
NI FACTORY BASE QUOTES FOR CATTLE

(P/KG DW)	This Week 11/12/23	Next Week 18/12/23
Prime		
U-3	446 - 452p	446 - 454p
R-3	440 - 446p	440 - 448p
O+3	434 - 440p	434 - 442p
P+3	378 - 384p	378 - 386p
Cows		
O+3	300 - 320p	304 - 320p

Cow quotes vary depending on weight and grade. Pricing policies vary from plant to plant. Producers are advised to check pricing policies before presenting cattle for slaughter.

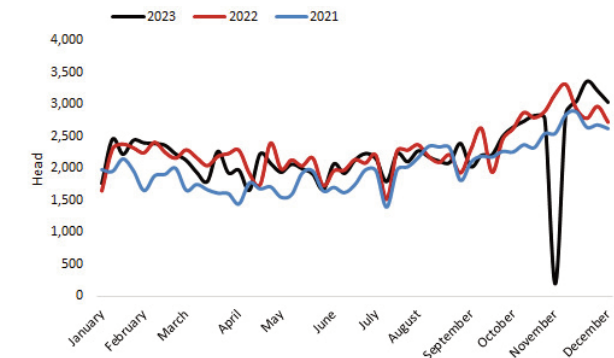
Prime Cattle Throughput to date 2021-2023.

Source: DAERA.



Cow Throughput to date 2021-2023.

Source: DAERA.



REPORTED NI CATTLE PRICES - P/KG

W/E 09/12/23	Steers	Heifers	Young Bulls
U3	469.9	471.5	453.5
R3	465.2	468.8	454.1
O+3	454.1	461.2	440.9

REPORTED COW PRICES NI - P/KG

W/E 09/12/23	Weight Bands			
	<220kg	220-250kg	250-280kg	>280kg
P1	200.7	217.2	226.6	246.7
P2	226.8	254.0	268.4	285.8
P3	231.2	263.6	286.2	296.0
O3	-	283.3	303.6	311.5
O4	-	-	300.9	316.5
R3	-	-	-	337.1

Deadweight Cattle Trade

The deadweight trade for all types of cattle in NI continued to strengthen last week as a result of tightening beef supplies. All categories recorded increased average prices from the previous week, with 457.5p/kg paid for steers and 458.5p/kg paid on average for heifers. This was an increase of 2.2p/kg and 5.1p/kg respectively from the previous week. The average price paid for an R3 and R4 grade steer was 468.6p/kg and 468.9p/kg, respective increases of 2.6p/kg and 5.5p/kg on the previous week.

With a strengthening deadweight cattle trade in NI, the differential between base quotes and prices paid continues to increase. Early next week stronger quotes on this weeks levels are expected for all types of cattle. In regards to cows, just one major processor is quoting below 320p/kg for O+3 grading cows.

In GB last week the average steer price was up 0.7p/kg to 483.1p/kg while the average R3 steer price remained steady on the previous week at 490.5p/kg. Last week Scotland was the only GB region reporting overall declines in average prices paid for steers and heifers. Meanwhile, the cow trade increased across all GB regions reaching 331.6p/kg on average in Scotland.

The upward movement in the deadweight cattle trade also continued in ROI last week. The average R3 steer price was up by the equivalent of 1.2p/kg to 417p/kg, while the R3 heifer price increased 2.1p/kg to 421.8p/kg. The cow trade in ROI last week continued to trend ahead of NI and GB, with an O3 cow paid the equivalent of 338.4p/kg on average, putting it 27.6p/kg ahead of the same price in NI, and 12.1p/kg ahead of the GB average.

LAST WEEK'S DEADWEIGHT CATTLE PRICES (UK / ROI)

W/E 09/12/23	Northern Ireland	Rep of Ireland	Scotland	Northern England	Midlands & Wales	Southern England	GB
Steers	U3	472.0	424.7	501.5	495.2	494.6	495.1
	R3	468.6	417.0	499.3	491.2	487.5	487.4
	R4	468.9	416.2	500.3	496.5	481.5	484.9
	AVG	457.5	407.2	485.6	477.0	468.7	468.2
Heifers	U3	469.8	430.3	503.7	494.9	498.2	493.2
	R3	469.4	421.8	498.1	489.5	486.4	483.9
	R4	467.2	424.4	498.8	493.6	484.0	484.8
	AVG	458.4	416.1	486.4	471.3	459.5	462.5
Young Bulls	U3	456.1	416.0	488.6	479.5	465.9	-
	R3	450.3	409.8	485.3	474.6	473.6	478.8
	O3	434.9	395.2	457.8	444.0	449.1	461.9
	AVG	438.9	-	474.9	457.3	455.3	455.9
Prime Cattle Price Reported	6,018	-	5,864	6,559	6,747	4,677	23,847
Cows	O3	310.8	338.4	334.4	327.4	324.5	322.7
	O4	316.2	339.3	340.8	331.9	327.2	322.8
	P2	272.3	299.4	288.7	290.6	279.2	281.6
	AVG	274.8	-	331.6	308.5	285.2	281.6

Notes: (i) Prices are p/kg Sterling-ROI prices converted at 1 euro=85.71p Stg
(ii) Shading indicates a lower price than the previous week.
(iii) AVG is the average of all grades in the category, not just those listed

LIVEWEIGHT CATTLE TRADE

LATEST LIVEWEIGHT CATTLE MART PRICES NI

W/E 09/12/23	1st QUALITY			2nd QUALITY		
	From	To	Avg	From	To	Avg
Finished Cattle (p/kg)						
Steers	265	312	285	210	264	230
Friesians	208	229	215	186	207	197
Heifers	250	299	262	205	249	225
Beef Cows	208	264	226	150	207	180
Dairy Cows	125	161	140	65	124	90
Store Cattle (p/kg)						
Bullocks up to 400kg	285	344	310	200	284	240
Bullocks 400kg - 500kg	250	316	275	200	249	225
Bullocks over 500kg	240	293	265	180	239	210
Heifers up to 450kg	250	289	270	200	249	225
Heifers over 450kg	240	298	270	195	239	210
Dropped Calves (£/head)						
Continental Bulls	330	430	380	200	325	265
Continental Heifers	300	420	345	150	295	210
Friesian Bulls	130	180	150	50	100	75
Holstein Bulls	70	135	95	1	65	30

DEADWEIGHT SHEEP TRADE

NI SHEEP BASE QUOTES

(P/Kg DW)	This Week 11/12/23	Next Week 18/12/23
R3 Lambs up to 22kg	530 - 535p	530 - 535p

REPORTED SHEEP PRICES

(P/KG)	W/E 25/11/23	W/E 02/12/23	W/E 09/12/23
NI L/W Lambs	475.3	474.6	476.8
NI D/W Lambs	533.7	536.7	531.1
GB D/W Lambs	588.7	588.1	585.8
ROI D/W	562.6	551.0	550.5

Sheep Trade

Quotes from the plants this week for R3 grade lambs remained steady at 530-535p/kg up to 22kg, with similar quotes expected early next week. The number of lambs coming forward for slaughter remains firm, with throughput last week totalling 11,144 lambs. This brings the total lambs processed locally during the four week period to 43,619 head, a change of 1,913 head or 4.6 per cent from the 41,706 head processed during the corresponding four week period of 2022.

Exports of lambs to ROI for direct slaughter totalled 7,857 head last week a decline of 982 head from the previous week. This is a four week total of 34,369 head and an increase of 30.4 per cent or 8,018 head on the corresponding period of 2022.

The deadweight trade for lambs eased in NI last week with an average deadweight lamb price 531.1p/kg, back 5.6p/kg from the previous week. However the trade in local marts was improved with an average price of 476.8p/kg paid on average for slaughter type lambs up 2.2p/kg on the previous week. Meanwhile, in ROI the average deadweight lamb price last week was back on the week previous, by the equivalent of half a penny bringing it to 550.5p/kg.

LIVEWEIGHT SHEEP TRADE

LATEST SHEEP MARTS (P/KG LW)

From: 09/12/23		Lambs			
To: 14/12/23		No	From	To	Avg
Saturday	Omagh	818	478	506	-
	Swatragh	770	476	525	-
Monday	Kilrea	1050	484	537	-
	Markethill	1320	480	519	-
Tuesday	Saintfield	670	480	530	-
	Rathfriland	488	472	533	477
Wednesday	Ballymena	2060	468	504	481
	Enniskillen	411	470	502	-
	Armoyle	520	478	550	-