

## DEADWEIGHT CATTLE TRADE

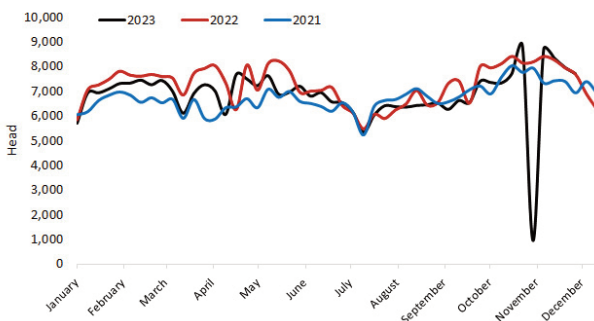
### NI FACTORY BASE QUOTES FOR CATTLE

(P/KG DW)	This Week 04/12/23	Next Week 11/12/23
<b>Prime</b>		
U-3	440 - 448p	446 - 452p
R-3	434 - 442p	440 - 446p
O+3	428 - 436p	434 - 440p
P+3	372 - 380p	378 - 384p
<b>Cows</b>		
O+3	298 - 320p	300 - 320p

Pricing policies vary from plant to plant. Producers are advised to check pricing policies before presenting cattle for slaughter.

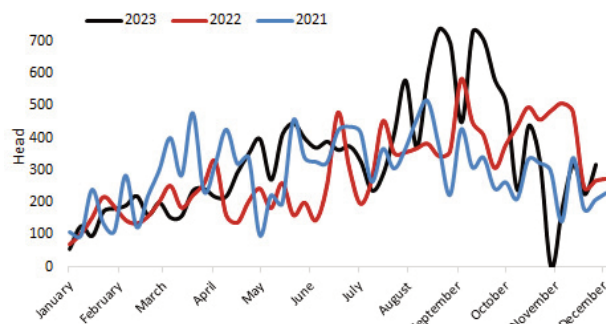
### Prime Cattle Throughput to date 2021-2023

Source: DAERA



### Prime Cattle Imports From ROI to date 2021-2023

Source: DAERA



### REPORTED NI CATTLE PRICES - P/KG

W/E 02/12/23	Steers	Heifers	Young Bulls
U3	469.4	470.9	450.5
R3	465.2	465.5	443.8
O+3	457.9	457.7	437.4

### REPORTED COW PRICES NI - P/KG

W/E 02/12/23	Weight Bands			
	<220kg	220-250kg	250-280kg	>280kg
P1	195.4	215.4	228.0	242.8
P2	216.8	247.4	266.2	283.0
P3	228.9	261.9	279.1	293.0
O3	250.0	276.3	307.0	313.8
O4	-	300.0	304.6	315.4
R3	-	-	-	335.2

### Deadweight Cattle Trade

Next week stronger quotes of 446-452p/kg are expected for U-3 grading steers and heifers. With an average price of 466p/kg and 465.5p/kg paid in NI last week for R3 grading steers and heifers respectively, and reports from producers of cattle comfortably securing 468p/kg upwards at point of slaughter in recent weeks, producers are reminded these quotes are intended to indicate the trades direction of travel and should be used only as a starting point for negotiation when selling their stock. Base quotes for O+3 grading cows are expected to range from 300-320p/kg early next week.

Last week tight cattle supplies in NI saw cattle slaughtering decline. Prime cattle throughput totalled 7,720 head with 3,216 cows processed. Correspondingly, last week imports of prime cattle from ROI for direct slaughter totalled 317 head, while cow imports total came to 248 head. Average prices paid for steers in NI were up 1.1p/kg last week to 455.3p/kg, while average prices paid for heifers were down 3.3p/kg to 453.4p/kg.

ROI reported further improvements across almost all categories in euro and sterling terms last week with U3 heifers up 2.1p/kg to 429.3p/kg. ROI reported the highest prices for cows last week, with O3 cows on average paid 24.8p/kg more than NI and 13.7p/kg more than GB. The cattle trade across GB experienced some declines last week, despite this however, GB average prices were only marginally affected with the average steer price up 0.8p/kg to 482.4p/kg and the average price paid for heifers back 0.1p/kg to 477.6p/kg.

### LAST WEEK'S DEADWEIGHT CATTLE PRICES (UK / ROI)

W/E 02/12/23	Northern Ireland	Rep of Ireland	Scotland	Northern England	Midlands & Wales	Southern England	GB
Steers	U3	469.2	423.7	503.2	492.0	492.4	494.7
	R3	466.0	415.8	501.6	492.8	485.0	486.9
	R4	463.4	416.4	499.7	495.5	481.2	488.8
	O3	455.1	405.7	492.2	479.6	465.5	463.7
	AVG	455.3	-	498.1	485.7	473.6	473.4
Heifers	U3	469.6	429.3	507.2	496.5	499.7	493.0
	R3	465.5	419.7	499.8	488.8	486.7	484.3
	R4	462.4	421.1	499.5	490.8	483.0	483.6
	O3	452.3	413.4	486.6	472.8	458.4	460.3
	AVG	453.4	-	497.9	479.3	467.6	463.9
Young Bulls	U3	452.3	412.9	486.8	486.6	469.0	491.3
	R3	445.8	407.9	478.6	475.5	472.4	477.3
	O3	435.5	392.0	452.7	450.3	439.2	436.7
	AVG	438.0	-	470.6	464.9	457.7	464.8
	Prime Cattle Price Reported	6,263	-	5,879	6,604	7,335	5,041
Cows	O3	312.7	337.5	334.5	326.4	319.7	320.7
	O4	314.8	338.1	340.0	331.4	320.0	322.7
	P2	271.2	296.5	292.8	288.3	278.6	277.6
	P3	287.9	319.6	298.8	304.8	298.9	297.8
	AVG	267.9	-	328.4	303.2	283.2	278.9

Notes: (i) Prices are p/kg Sterling-ROI prices converted at 1 euro=86.49p Stg  
(ii) Shading indicates a lower price than the previous week.  
(iii) AVG is the average of all grades in the category, not just those listed

## LIVEWEIGHT CATTLE TRADE

### LATEST LIVEWEIGHT CATTLE MART PRICES NI

W/E 02/12/23	1st QUALITY			2nd QUALITY		
	From	To	Avg	From	To	Avg
<b>Finished Cattle (p/kg)</b>						
Steers	250	293	275	200	249	225
Friesians	206	220	212	179	205	197
Heifers	245	294	262	200	244	222
Beef Cows	215	249	225	155	214	180
Dairy Cows	120	156	135	50	119	85
<b>Store Cattle (p/kg)</b>						
Bullocks up to 400kg	300	383	325	200	299	250
Bullocks 400kg - 500kg	270	334	285	220	269	235
Bullocks over 500kg	240	286	260	190	239	215
Heifers up to 450kg	300	417	330	235	299	260
Heifers over 450kg	235	292	270	188	234	205
<b>Dropped Calves (£/head)</b>						
Continental Bulls	375	525	425	240	370	290
Continental Heifers	300	440	350	150	295	210
Friesian Bulls	170	270	220	50	90	70
Holstein Bulls	50	90	70	1	45	25

## DEADWEIGHT SHEEP TRADE

### NI SHEEP BASE QUOTES

(P/Kg DW)	This Week 04/12/23	Next Week 11/12/23
R3 Lambs up to 22kg	530 - 535p	530 - 535p

Pricing policies vary from plant to plant.

### REPORTED SHEEP PRICES

(P/KG)	W/E 18/11/23	W/E 25/11/23	W/E 02/12/23
NI L/W Lambs	479.2	475.3	474.6
NI D/W Lambs	528.7	533.7	536.7
GB D/W Lambs	589.9	588.7	588.1
ROI D/W	559.9	562.6	551.0

### Deadweight Sheep Trade

Base quotes from the major plants for R3 grading lambs this week ranged from 530-535p/kg with similar prices expected early next week.

In NI, deadweight lamb prices increased by 3p/kg to 536.7p/kg meanwhile, across the water in GB, there was a slight decline of 0.6p/kg for deadweight lambs for the week ending 02/12/23. Last week the deadweight lamb price in ROI declined drastically back by the equivalent of 11.6p/kg to 551p/kg.

Last week, a total of 11,391 lambs were slaughtered at local meat plants, an increase of 1,010 lambs from the week before. Lamb exports from NI to ROI for direct slaughter last week totalled 8,839, an increase of 644 lamb exports from the week previous.

### Liveweight Sheep Trade

Smaller numbers of lambs passed through the NI marts last week with a stronger trade reported. In Markethill this week 710 lambs sold from 470-505p/kg compared to an entry of 840 lambs last week selling from 460-491p/kg. The ewe trade remained similar to recent weeks with top reported prices ranging from £122 - £202 last week.

## LIVEWEIGHT SHEEP TRADE

### LATEST SHEEP MARTS (P/KG LW)

From: 02/12/23		Lambs			
To: 07/12/23		No	From	To	Avg
Saturday	Omagh	402	471	535	-
	Swatragh	1000	455	489	-
Monday	Kilrea	900	482	542	-
	Markethill	710	470	505	-
Tuesday	Saintfield	755	482	550	-
	Rathfriland	733	460	507	480
Wednesday	Ballymena	2157	470	514	485
	Enniskillen	368	469	502	-
Thursday	Armoy	481	465	550	-