

DEADWEIGHT CATTLE TRADE

NI FACTORY BASE QUOTES FOR CATTLE

(P/KG DW)	This Week 16/10/23	Next Week 23/10/23
Prime		
U-3	446 - 456p	440 - 450p
R-3	440 - 450p	434 - 444p
O+3	434 - 444p	428 - 438p
P+3	378 - 388p	372 - 382p
	Including bonus where applicable	
Cows		
O+3	314 - 350p	304 - 336p

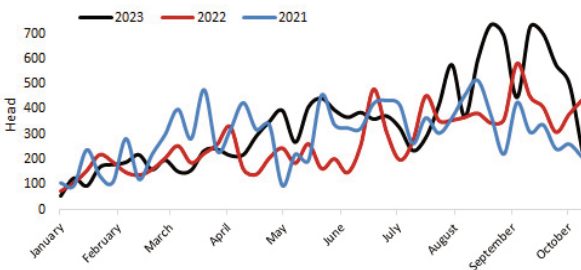
Cow quotes vary depending on weight and grade. Pricing policies vary from plant to plant. Producers are advised to check pricing policies before presenting cattle for slaughter.

FINAL DATES FOR FREE AMR TRAINING SESSIONS ENDS 31ST OCTOBER 2023

Date & Time	Location
Friday 20th October, 7:30pm	Silverbirch Hotel, Omagh
Monday 23rd October, 7:30pm	Dunsilly Hotel, Antrim
Tuesday 24th October, 7:30pm	Online Webinar
Wednesday 25th October, 7:30pm	Millbrook Lodge, Ballynahinch
Monday 30th October, 7:30pm	Seagoe Hotel, Portadown

Pre-registration for the above events is required. Please contact **AI Services on 028 9083 3123** to book your place.

Prime Cattle Imports from ROI for direct slaughter to date 2021-2023 Source: DAERA



REPORTED COW PRICES NI - P/KG

W/E 14/10/23	Weight Bands			
	<220kg	220-250kg	250-280kg	>280kg
P1	227.2	241.2	253.0	273.8
P2	257.3	278.5	293.6	309.4
P3	288.7	296.6	310.2	325.9
O3	304.9	335.6	336.9	339.6
O4	-	-	337.7	344.4
R3	-	-	332.0	358.0

Deadweight Cattle Trade

Base quotes for in spec U-3 grade steers and heifers ended the week at 446-456p/kg, with quotes next week expected to be back and range from 440-450p/kg across the local plants. The cow trade reported downward movement with quotes for O+3 cows falling mid week to range from 314-340p/kg. Quotes early next week are expected to range from 304-336p/kg.

The deadweight trade for prime cattle in NI reported downward movement across the majority of grades last week. Plentiful supplies of beef are driving this pressure on the trade with the prime cattle kill last week totalling 7,343 head bringing the three week total to 22,123 head, an increase of 2,665 head from the previous three week period. Meanwhile, the cow kill increased 1,438 head during the same three week period. Last week the average steer price was 454.8p/kg, back 3p/kg from the previous week while the R3 steer price was back by 2.7p/kg to 465.3p/kg. The average heifer price in NI last week was back by 2.1p/kg to 456.2p/kg with the R3 heifer price back by 1.4p/kg to 466.1p/kg. The average young bull price in NI last week increased by 1.2p/kg to 441.2p/kg with the R3 young bull price also up slightly from the previous week to 452.7p/kg. Meanwhile, the cow trade struggled in NI last week, with the P2 cow price back 10p/kg from the previous week to 295.9p/kg. The average cow price decreased by 1.3p/kg bringing it to 303.7p/kg, while the average O3 cow price was back 5.7p/kg from the previous week to 339.1p/kg.

In GB last week the average deadweight steer price across the regions saw an increase of 0.7p/kg, while the average heifer and young bull price recorded declines of 1.1p/kg and 0.3p/kg respectively. The cow trade saw the most significant declines across all categories and regions last week, with declines ranging on average from 2.9p/kg in Northern England for a P3 cow, to a 12.4p/kg decline in the Midlands for an O3 cow. In ROI last week declines were reported in both euro and sterling terms for the majority of cattle grades, with cows reporting the largest declines.

LAST WEEK'S DEADWEIGHT CATTLE PRICES (UK / ROI)

W/E 14/10/23		Northern Ireland	Rep of Ireland	Scotland	Northern England	Midlands & Wales	Southern England	GB
		Steers	U3	468.3	409.1	500.4	491.8	490.8
	R3	465.3	398.9	500.1	492.7	482.6	486.9	489.8
	R4	463.8	397.8	499.4	493.0	481.1	489.6	494.5
	O3	453.6	382.3	487.1	479.1	468.4	465.7	472.5
	AVG	454.8	-	496.9	484.6	470.7	475.1	482.1
	U3	470.7	413.4	502.8	495.1	495.9	496.0	497.8
	R3	466.1	402.4	497.5	488.3	484.2	484.5	487.4
	R4	463.2	403.3	498.2	492.2	483.0	483.1	492.5
	O3	454.9	393.0	483.7	471.0	459.6	459.1	463.6
	AVG	456.2	-	496.4	482.3	464.3	467.6	477.7
	U3	458.2	402.0	491.6	474.3	481.6	483.1	483.2
	R3	452.7	394.2	478.9	475.7	479.8	453.4	476.9
	O3	438.4	379.8	447.5	438.8	447.3	461.3	445.0
	AVG	441.2	-	476.2	460.3	461.7	442.5	462.6
	Prime Cattle Price Reported	5,889	-	6,091	6,951	6,990	5,064	25,096
	O3	339.1	335.0	370.8	351.0	345.5	352.8	351.8
	O4	344.1	335.4	375.4	353.3	344.0	351.7	353.0
	P2	295.9	292.5	328.0	316.9	305.7	313.9	311.5
	P3	320.1	318.0	341.0	334.4	319.7	327.1	324.5
	AVG	303.7	-	365.3	327.8	309.0	308.1	319.5

Notes: (i) Prices are p/kg Sterling-ROI prices converted at 1 euro=86.37p Stg
(ii) Shading indicates a lower price than the previous week.
(iii) AVG is the average of all grades in the category, not just those listed

Please note the reported cattle prices listed above include premiums. LMC continues work to resolve the NIFAIS related issues affecting collation of some market information outputs including the non-premium cattle pricing reported on a weekly basis within the LMC Bulletin.

LIVEWEIGHT CATTLE TRADE

LATEST LIVEWEIGHT CATTLE MART PRICES NI

W/E 14/10/23	1st QUALITY			2nd QUALITY		
	From	To	Avg	From	To	Avg
Finished Cattle (p/kg)						
Steers	272	306	281	210	271	235
Friesians	200	231	211	174	197	187
Heifers	256	278	267	200	255	220
Beef Cows	204	236	216	150	203	175
Dairy Cows	130	197	146	50	129	75
Store Cattle (p/kg)						
Bullocks up to 400kg	280	323	300	200	279	240
Bullocks 400kg - 500kg	255	331	290	205	254	235
Bullocks over 500kg	240	308	270	175	239	207
Heifers up to 450kg	240	300	260	200	239	215
Heifers over 450kg	270	378	300	200	269	225

DEADWEIGHT SHEEP TRADE

NI SHEEP BASE QUOTES

(P/Kg DW)	This Week 16/10/23	Next Week 23/10/23
R3 Lambs up to 21kg	515p	515 - 520p

REPORTED SHEEP PRICES

(P/KG)	W/E 30/09/23	W/E 07/10/23	W/E 14/10/23
NI L/W Lambs	474.1	471.2	475.4
NI D/W Lambs	520.1	518.3	518.6
GB D/W Lambs	549.7	549.6	556.7
ROI D/W	534.6	534.4	532.5

Deadweight Sheep Trade

Base quotes this week for R3 grading lambs remained steady at 515p/kg to 21kg with improved quotes expected early next week.

Last week 11,132 lambs were processed in NI plants, 394 head fewer than during the previous week. However levels remain ahead of the same week last year when 10,865 lambs were processed. Meanwhile, last week lamb export levels to ROI for direct slaughter increased for the fourth consecutive week, up by 162 head from the previous week to total 6,929 head. Strong demand from buyers in local marts last week saw the average liveweight lamb price increase to 475.4p/kg, up by 4.2p/kg from the previous week.

The deadweight lamb price in NI last week was relatively steady on the previous week at 518.6p/kg with an average price of 521.2p/kg paid last week for an R3 grading lamb. During the same week last year the average NI lamb price was 497.5p/kg with an average price of 503.3p/kg paid for R3 grading lambs. Last week in ROI the average lamb price was the equivalent of 532.5p/kg a decline of 1.9p/kg from the previous week.

LIVEWEIGHT SHEEP TRADE

LATEST SHEEP MARTS (P/KG LW)

From: 14/10/23		Lambs			
To: 19/10/23		No	From	To	Avg
Saturday	Omagh	666	478	528	-
	Swatragh	1250	455	489	-
Monday	Kilrea	800	478	500	-
	Markethill	1125	460	498	-
Tuesday	Saintfield	520	470	510	-
	Rathfriland	762	465	514	478
Wednesday	Ballymena	2205	470	514	482
	Armoyle	376	470	515	-