

DEADWEIGHT CATTLE TRADE

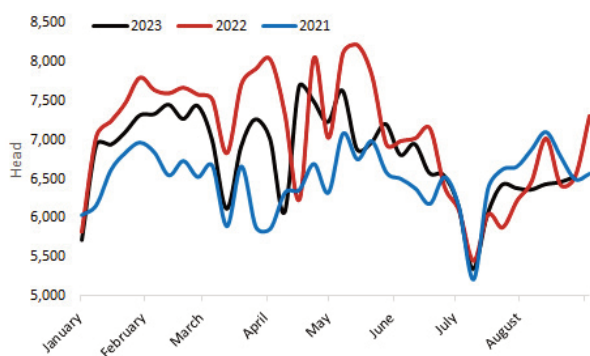
NI FACTORY BASE QUOTES FOR CATTLE

(P/KG DW)	This Week 04/09/23	Next Week 11/09/23
Prime		
U-3	440 - 446p	440 - 446p
R-3	434 - 440p	434 - 440p
O+3	428 - 434p	428 - 434p
P+3	372 - 378p	372 - 378p
Including bonus where applicable		
Cows		
O+3	330 - 345p	330 - 345p

Cow quotes vary depending on weight and grade. Pricing policies vary from plant to plant. Producers are advised to check pricing policies before presenting cattle for slaughter.

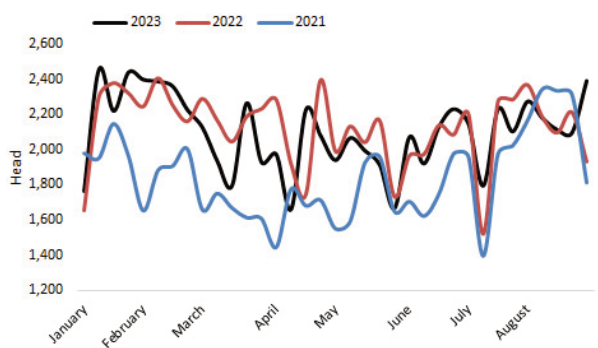
Prime Cattle Throughput to date 2021-2023

Source: DAERA.



Cow Throughput to date 2021-2023

Source: DAERA.



REPORTED COW PRICES NI - P/KG

W/E 02/09/23	Weight Bands			
	<220kg	220-250kg	250-280kg	>280kg
P1	226.0	242.4	254.2	272.6
P2	256.0	278.8	296.1	312.5
P3	280.3	296.6	319.0	323.8
O3	262.0	325.2	330.3	341.3
O4	-	325.0	346.0	340.6
R3	-	-	-	360.4

Deadweight Cattle Trade

Base quotes from the major NI processors for in spec U-3 steers and heifers improved this week to range from 440-446p/kg, with quotes for O+3 cows this week ranging from 330-345p/kg. Next week similar quotes are expected for all types of cattle.

Steady levels of prime cattle continue to be presented for slaughter in local plants with the prime kill last week totalling 6,527 head. This brings total throughput during the first 8 months of the year to 238,136 head, a decline of four per cent on the corresponding period of 2022 when 247,345 head were processed. Meanwhile, cow throughput last week increased level of 2,392 total head last week bringing year to date throughput to 73,480 head, 826 head or one per cent behind 2022 levels during the same period.

The deadweight cattle trade in NI last week reported some marginal declines across all categories, however the average price paid for steers and heifers increased by 2.1p/kg and 0.8p/kg respectively from the previous week.

GB prices continued to strengthen last week with an average steer price of 464.9p/kg, up 5.6p/kg from the previous week. Strong increases in average steer prices were reported across all GB regions ranging from 2.6p/kg - 10p/kg reported in Southern England. An average heifer price of 461.3p/kg was reported in GB last week, up 4.1p/kg from the previous week, while the average price paid for a young bull was up 3.3p/kg to 452.9p/kg. The cow trade in GB also continued to recover with the average paid for cows up 5.1p/kg from the previous week to 318.4p/kg.

Last week, the deadweight cattle trade in ROI improved, reporting increases in both euro and sterling terms for all types of cattle. The R3 steer price was up 2.7p/kg to 398.5p/kg while the average R3 heifer price increased by the equivalent of 2p/kg to 401.2p/kg. Meanwhile the average price paid for an O3 grading cow last week in ROI was up 2.7p/kg to 331.6p/kg.

LAST WEEK'S DEADWEIGHT CATTLE PRICES (UK / ROI)

W/E 02/09/23		Northern Ireland	Rep of Ireland	Scotland	Northern England	Midlands & Wales	Southern England	GB
		Steers	U3	462.8	407.7	482.1	474.1	481.4
	R3	459.5	398.5	479.9	470.4	467.8	472.2	471.6
	R4	459.4	399.2	482.1	473.4	463.8	470.0	475.4
	O3	447.2	385.4	463.2	452.3	446.8	449.5	450.6
	AVG	446.9	-	478.3	463.2	457.1	461.2	464.9
Heifers	U3	462.8	410.7	488.4	477.2	484.5	476.7	483.0
	R3	461.0	401.2	482.9	466.8	471.7	467.2	471.5
	R4	457.4	403.6	482.0	472.4	468.3	465.7	474.5
	O3	449.7	391.9	472.6	447.0	446.2	441.9	447.4
	AVG	448.7	-	479.3	460.8	454.3	449.6	461.3
Young Bulls	U3	447.1	401.8	471.6	465.1	474.7	465.8	470.6
	R3	447.2	390.7	463.9	454.5	467.4	458.2	462.3
	O3	429.6	375.9	445.3	436.2	424.0	385.3	429.9
	AVG	434.5	-	464.6	450.0	447.9	445.9	452.9
Prime Cattle Price Reported		4,876	-	5,336	5,535	6,140	4,036	21,047
Cows	O3	340.0	331.6	356.1	345.1	349.8	347.5	348.8
	O4	340.7	333.3	360.2	350.2	347.2	344.5	348.9
	P2	301.0	296.9	324.0	309.6	309.3	314.3	312.0
	P3	321.6	319.4	334.4	324.4	328.7	327.5	328.1
	AVG	296.1	-	354.1	321.1	313.5	306.3	318.4

Notes: (i) Prices are p/kg Sterling-ROI prices converted at 1 euro=85.77p Stg
(ii) Shading indicates a lower price than the previous week.
(iii) AVG is the average of all grades in the category, not just those listed

LIVEWEIGHT CATTLE TRADE

LATEST LIVEWEIGHT CATTLE MART PRICES NI

W/E 02/09/23	1st QUALITY			2nd QUALITY		
	From	To	Avg	From	To	Avg
Finished Cattle (p/kg)						
Steers	260	303	280	200	259	230
Friesians	224	240	232	170	214	195
Heifers	250	292	270	195	249	220
Beef Cows	210	259	229	160	209	185
Dairy Cows	130	168	150	50	129	95
Store Cattle (p/kg)						
Bullocks up to 400kg	275	344	305	210	274	235
Bullocks 400kg - 500kg	250	342	290	200	249	220
Bullocks over 500kg	235	298	260	200	234	215
Heifers up to 450kg	250	316	280	210	249	225
Heifers over 450kg	240	296	260	200	239	215
Dropped Calves (£/head)						
Continental Bulls	400	635	450	250	395	315
Continental Heifers	300	590	355	190	295	255
Friesian Bulls	160	250	185	50	115	95
Holstein Bulls	140	220	170	20	45	25

DEADWEIGHT SHEEP TRADE

NI SHEEP BASE QUOTES

(P/Kg DW)	This Week 04/09/23	Next Week 11/09/23
R3 Lambs up to 21kg	510 - 520p	510 - 515p

REPORTED SHEEP PRICES

(P/KG)	W/E 19/08/23	W/E 26/08/23	W/E 02/09/23
NI L/W Lambs	473.5	468.9	467.2
NI D/W Lambs	524.8	524.8	519.3
GB D/W Lambs	580.7	567.9	556.4
ROI D/W	530.9	530.2	530.0

Sheep Trade

Base quotes for R3 lambs ended this week in the region of 510-520p/kg, with the three major plants continuing to pay up to 21kg. Base quotes of 510-515p/kg are expected for R3 grading lambs early next week.

This week large entries of lambs passed through the NI marts with a stronger trade reported compared to the previous week. Last week 10,688 lambs were slaughtered locally bringing year to date throughput to 304,100 head. This is an increase of 28,640 head or 10 per cent compared to the corresponding period last year. During the same period year on year the average carcase weight of lambs slaughtered locally was back 0.7kg to an average of 21.6kg this year.

Meanwhile, direct slaughter lamb exports last week totalled 6,930 head, bringing the total lamb exports to ROI for 2023 to date to 174,862 head. This is similar to the 173,799 head exported to ROI during the first eight months of 2022.

The average NI deadweight lamb price last week was 519.3p/kg, back 5.5p/kg from the previous week. In ROI and GB declines in deadweight lamb prices were also reported.

LIVEWEIGHT SHEEP TRADE

LATEST SHEEP MARTS (P/KG LW)

From: 02/09/23		Lambs			
To: 07/09/23		No	From	To	Avg
Saturday	Omagh	1041	481	521	-
	Swatragh	2050	450	510	-
Monday	Kilrea	730	467	578	-
	Markethill	850	460	508	-
Tuesday	Saintfield	790	465	505	-
	Rathfriland	800	460	580	477
Wednesday	Ballymena	1790	440	500	468
	Enniskillen	790	460	510	-