

May 2017

# NORTHERN DIVISION

## Annual Report 2016/2017 to Causeway Coast & Glens



Lisnasoo Junction

<b>Contents</b>	<b>Page No.</b>
<b>Foreword</b>	3
<b>Northern Division</b>	4
<b>Senior Management Structure</b>	5
<b>2016/17 Expenditure Profile</b>	6
<b>Section 1 - Strategic Road Improvements</b>	7
1.1 Scheme Development Overview	8
1.2 Frosses Dualling	10
1.3 Londonderry to Dungiven	11
<b>Section 2 - Network Maintenance</b>	12
Winter Service	38
Gritted Routes	66
<b>Section 3 - Network Development</b>	39
3.1 Minor Improvements	40
3.2 Traffic	42
3.3 Street Lighting	54
<b>Section 4 - Network Planning</b>	57
4.1 Development Control	58
4.2 Maintenance of Structures	60

## Foreword

### The Mayor, Aldermen and Councillors Causeway Coast & Glens Borough Council

I have pleasure in submitting my third Annual Report on DfI Roads work in the Causeway Coast & Glens Borough Council area.

Northern Division covers the three Council areas shown on page 4 of this report. It is one of four Divisions, each of which manages the road network, commissions new works, and is the contact point for road users and public representatives.

This report deals with works completed in the Causeway Coast & Glens Borough Council area during the year 2016/2017 and sets out our initial proposals for schemes to be undertaken in the year 2017/2018.

Funding is allocated to the Division under two categories, Capital funding for new works, or infrastructure renewals, and Resource funding for the day to day maintenance of our assets. On the capital side the Division is taking forward important major schemes. This report includes details of work we are undertaking on these schemes which affect your council area. Other local capital schemes and transport and safety schemes will also be progressed or delivered in the year.

Whilst there are some capital pressures, my staff will continue to develop resurfacing and traffic management schemes to enhance safety, to improve traffic flow and provide measures for pedestrians and cyclists. During the year the Department will also continue to highlight the need for further capital funding for structural maintenance to maintain the integrity of the road network.

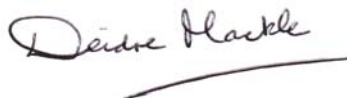
On the resource side, following the budget settlement outlined by the Secretary of State in April, it is likely there will be knock on impacts for services, including routine maintenance of the road network. In this area, the Department is likely to be reliant on additional resources becoming available.

However, the Department's objective is to continue to deliver routine road maintenance services at the current level for as long as possible. While services will be constrained, we are planning to meet all essential public safety requirements.

We understand the implications of the limited service and its long term impacts on the network. But we will do our best to deliver routine maintenance services with the indicative allocated budget. A limited service related to gully cleaning, road marking and street light repairs, road and footway patching, grass cutting and the maintenance of traffic signals will be provided. As is always the case, the budget remains under ongoing review throughout the year.

Our Request/Enquiry forms can be used to raise local issues with the Department, or deal with matters that are not directly related to my report. To improve the efficiency of the services that we deliver, over the last year we have implemented on-line fault reporting for a full range of roads related issues through NI Direct. I would encourage Councillors to avail of this facility on NI Direct. Of course, my operational staff are also available to do their best to assist with queries.

I hope that you find this report informative. The Department values constructive comment on all its activities, and I along with Section Engineers Austin Montgomery and James Middleton, look forward to meeting the Council.



**Divisional Manager**

## Northern Division

## Causeway Coast & Glens Borough Council DfI Roads Report - May 2017

Northern Division is one of four Client Divisions within DfI Roads and Rivers. It spans the local Council areas of Antrim & Newtownabbey, Causeway Coast & Glens and Mid & East Antrim (see map below).



In Northern Division we are responsible for approximately 5,853Km (3,635miles) of public road and 2,636Km of footway together with 1,328 bridges and 10 park and ride/share sites. We carry out functions under the headings:-

- Strategic Road Improvements – Road Improvement Schemes greater than £1.5million on the strategic road network
- Network Maintenance – Maintenance of Roads and Structures
- Network Development - Street Lighting and Road Improvement Schemes up to £1.5million
- Network Planning - Development Control and Area Plans

Divisional Headquarters  
County Hall  
Castlerock Road  
Coleraine  
Co Londonderry  
BT51 3HS

Tel: (028) 7034 1300  
Fax: (028) 7034 1442  
E-mail: [transportni.northern@infrastructure-ni.gov.uk](mailto:transportni.northern@infrastructure-ni.gov.uk)  
Emergency Tel No: (028) 7035 3202  
Website: [www.drdni.gov.uk](http://www.drdni.gov.uk)

## Northern Division - Senior Management Structure



**Deidre Mackle**  
Divisional Manager

DfI Roads wishes to build upon the good working relationships it has with Council Members and Officers. The Senior Management Team are listed below, however day to day matters should be raised with the relevant Senior Engineers whose details are listed at the start of each section.



**Dawson Wray**  
**Colin Hutchinson**  
**Strategic Road Improvements Managers**  
Major works schemes; Management of consultants;  
Large minor works schemes; Lands.



**Gary Quinn**  
**Network Maintenance Manager**  
Road maintenance operations; Section Offices; Inspections, Road maintenance standards, Utility street works; Winter service; Structural maintenance planning and programming; Estimates and allocations for all operation & maintenance functional activities.

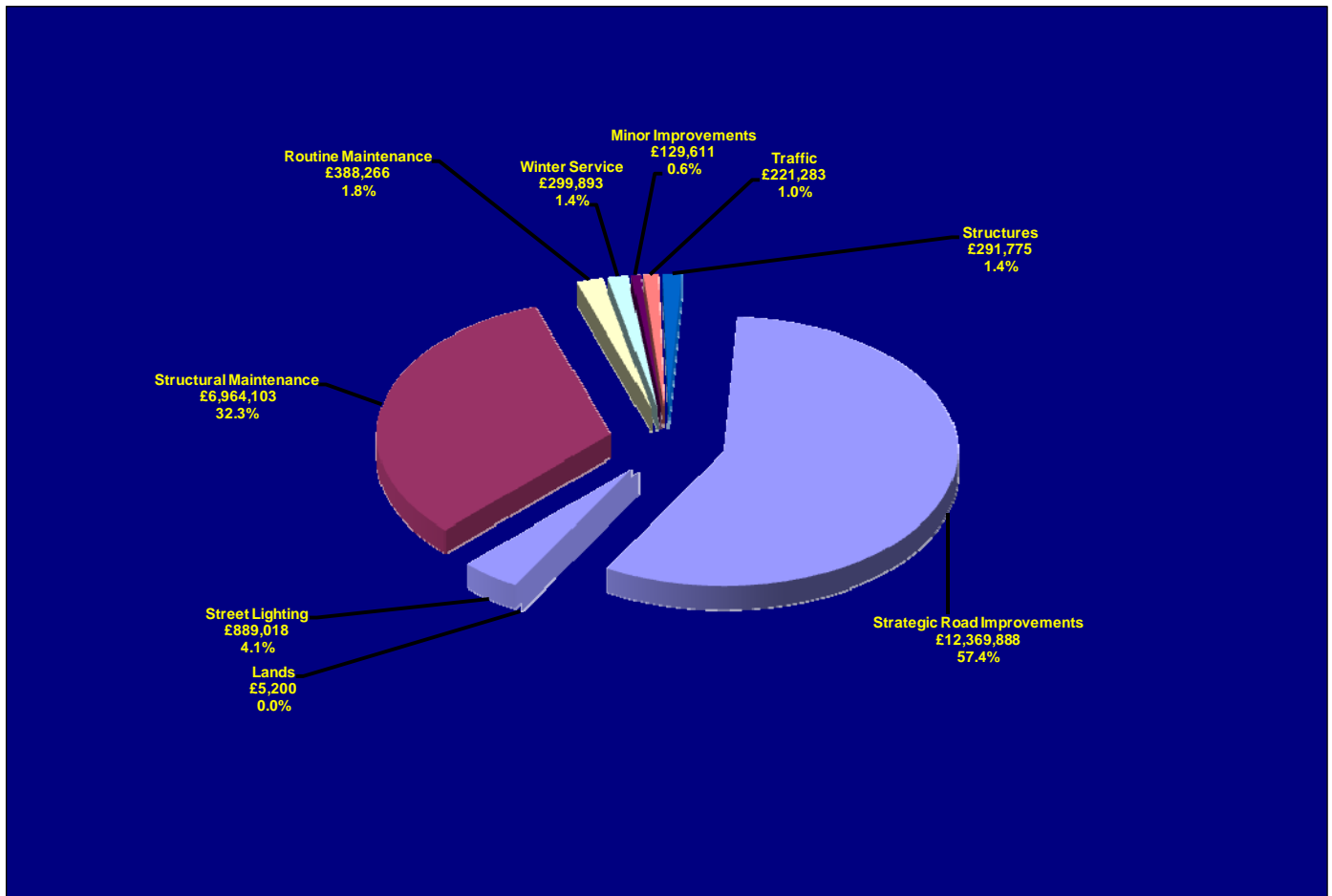


**Alan Keys**  
**Network Development Manager**  
Minor improvements; Traffic management; Street lighting capital & maintenance; Estimates and allocations for local transport & safety measures; Park and Ride/Share parking.



**Cathal Brown**  
**Network Planning Manager**  
Development Control; Private Streets; Area Plans; Forward Planning; Highway Structures.

## Causeway Coast & Glens Council Area 2016/17 Expenditure Profile



Structural Maintenance - Resurfacing, Surface Dressing, Patching and Drainage

Routine Maintenance - Grass cutting, Environmental Work, Gully Emptying, Embankment/Verge Maintenance, Fencing and Car Parks

Winter Service - Gritting, Snow Clearance

Street Lighting - Lighting Provision, Maintenance and Energy

Traffic - Collision Remedial, Traffic Management, Traffic Calming and Transportation

Network Development - Minor Improvements and Safety Barriers Structures - Bridge Maintenance and Bridge Strengthening

Strategic Road Improvements - Major Improvements to Key Transport Links Lands -Acquisition of land for road schemes

## SECTION 1

# STRATEGIC ROAD IMPROVEMENTS

**Strategic Road Improvements Managers: Dawson Wray & Colin Hutchinson**

They are supported by the following staff



**Billy Miller**

Strategic Road Improvements  
County Hall  
Castlerock Road  
Coleraine  
BT51 3HS  
Tel: 028 7035 9974 Fax: 028 7034 1442  
E-mail: Billy.Miller@infrastructure-ni.gov.uk



**Cathal McKenna**

Strategic Road Improvements  
County Hall  
Castlerock Road  
Coleraine  
BT51 3HS  
Tel: 028 7034 1531 Fax: 028 7034 1442  
E-mail: Cathal.McKenna@infrastructure-ni.gov.uk



**Colin Cochrane**

Strategic Road Improvements  
County Hall  
Castlerock Road  
Coleraine  
BT51 3HS  
Tel: 028 7034 1438 Fax: 028 7034 1442  
E-mail: Colin.Cochrane@infrastructure-ni.gov.uk



**Kieran Mullan**

Strategic Road Improvements  
County Hall  
Castlerock Road  
Coleraine  
BT51 3HS  
Tel: 028 7034 0842 Fax: 028 7034 1442  
E-mail: Kieran.Mullan@infrastructure-ni.gov.uk

## 1.1 Scheme Development Overview

The current programme of **Strategic Road Improvements (SRIs)** to improve transportation links in Northern Ireland has evolved over the last decade or so. The key documents and strategies guiding this programme are:

- The White Paper “A New Deal for Transport: Better for Everyone” published 1998.
- “Moving Forward”: Northern Ireland Transport Policy Statement published 1998.
- “Regional Development Strategy for Northern Ireland 2025” published 2002.
- “Regional Transportation Strategy for Northern Ireland 2002-2012” published 2002.
- “Regional Strategic Transport Network Transport Plan 2015” published 2005.
- “Investment Delivery Plan (IDP) for Roads” published April 2008.
- “Regional Development Strategy 2035” published 2012.
- “Ensuring a Sustainable Transport Future - A new approach to Regional Transportation” published 2012.
- “Investment Strategy for Northern Ireland 2011-2021” published 2012.

TransportNI carries out a **comprehensive appraisal of each SRI proposal**. The appraisal procedure requires a clear understanding of the objectives which are to be met, and appropriate criteria to be used, to decide whether a proposal meets them. The **Government’s five objectives for transport** are pivotal to the appraisal process:

- Environmental impact** involves reducing the direct and indirect impacts of transport facilities on the environment of both users and non-users. There are 10 sub-objectives including noise, atmospheric pollution of differing kinds, impacts on countryside, wildlife, ancient monuments and historic buildings.
- Safety** is concerned with reducing the loss of life, injuries and damage to property resulting from transport incidents and crime. There are 2 sub-objectives: reduce accidents and improve security.
- Economy** is concerned with improving the economic efficiency of transport. There are 5 sub-objectives: improve economic efficiency for consumers and for business users and providers of transport, improve reliability and the wider economic impacts, and get good value for money in relation to impacts on public accounts.
- Accessibility** is concerned with the ability with which people can reach different locations and facilities by different modes.
- Integration** aims to ensure that all decisions are taken in the context of the Government’s integrated transport policy.

There is tension between these objectives, such that proposals may contribute to the achievement of one objective, but work against the achievement of others. The appraisal procedure must allow determination of an appropriate balance between the five objectives.



## 1.1 Scheme Development Overview (Cont.)

Appraisals are reported in **Scheme Assessment Reports (SARs)** which describe the advantages and disadvantages of the proposed scheme. Scheme assessment reporting is a three stage procedure: the level of detail and the coverage of the assessment is appropriate to the type of decision that can reasonably be taken at each stage.

- **Stage 1** – identify the environmental, engineering, economic and traffic advantages, disadvantages and constraints associated with broadly defined improvement strategies. This concludes in the selection of a number of potential route corridors or scheme options.
- **Stage 2** – identify the factors to be taken into account in choosing alternative routes or improvement schemes and to identify the environmental, engineering, economic and traffic advantages, disadvantages and constraints associated with those routes or schemes. This concludes in the selection of a preferred route or scheme option.
- **Stage 3** – identify clearly the advantages and disadvantages, environmental, engineering, economic and traffic terms of the preferred route option. A particular requirement at this stage is an assessment of the significant environmental effects of the project in accordance with the requirements of Article 67A(3) of The Roads (Northern Ireland) Order 1993, implementing EC Directive 2011/92/EU.

Where appropriate, each assessment stage includes a proportionate effort land-use assessment examining the effects on agriculture including (i) land-take (ii) type of husbandry (iii) severance and major accommodation works for access, water supply and drainage etc.

### ***Strategic Road Improvement schemes wholly or partly within Northern Division***

**Located on the Northern Corridor** (connecting Belfast to Londonderry via Antrim, Ballymena, Ballymoney, Coleraine and Limavady and on to Donegal):

- a bypass of Ballykelly (an IDP for Roads Preparation Pool scheme).
- dualling of the A26 Frosses Road from Glarryford crossroads at the northern end of the existing Crankill dual carriageway to the Drones Road junction (under construction).
- dualling of the A26 Newbridge Road from the Portrush Road Roundabout at Ballymoney to the Wattstown Roundabout at Coleraine (an IDP for Roads Forward Planning Schedule scheme). No development work has been carried out on this scheme so far.

**Located on the North Western Corridor** (connecting Belfast to Londonderry via Antrim, Toome, Castledawson and Dungiven and on to Donegal):


- a dual carriageway between Randalstown and Castledawson (an IDP for Roads Preparation Pool scheme).
- a dual carriageway between Derry~Londonderry and Dungiven, including a dual carriageway bypass of Dungiven (an IDP for Roads Preparation Pool scheme).

## 1.2 A26 Frosses Dualling

*(Being dealt with by Billy Miller)*

Joint Venture contractor BAM McCann began construction of the 8 kilometre dual carriageway along the A26 Frosses Road between Glarryford crossroads and Drones Road, in January 2015.

### **Progress Report**



The sign is blue with white and yellow text. It features the TransportNI logo at the top left. The main heading is 'A26 DUALLING: GLARRYFORD TO A44 DRONES ROAD'. Below this, it lists project details: Contractor: BAM McCann joint Venture, Length of Scheme: 7.8 km, Cost: £55 million, Work Commences: Spring 2015, and Completion: Summer 2017. A yellow warning sign with a black triangle and a worker icon is on the right, with the text 'Emergency Tel. No.' and 'Please drive carefully'. At the bottom, it says 'TransportNI apologises for any inconvenience' and includes logos for Regional Development, ARUP, and BAM McCann JV. A website URL is provided at the bottom: 'For more information visit: www.drnl.gov.uk/A26Frosses'.

Work has been progressing well on the scheme, including:

- Construction of this scheme has progressed significantly, with approximately 95% of the works complete;
- All earthworks are complete;
- Work is also well advanced on all the major structures along the route, with all but one now open to traffic;
- All utility diversions are now complete; and
- Laying of the finished surface course is 80% complete.



**Lisnoo Junction facing North**

This new dual carriageway which is expected to be open to traffic ahead of programme in May 2017, will improve both journey times and journey time reliability for this stretch of the A26, thus reducing driver frustration and improving the safety performance of the route for all road users.

Visit <http://www.roadsni.gov.uk/a26frosses> to find out more about the scheme.

## 1.3 A6 Londonderry to Dungiven

*(Being dealt with by Billy Miller)*

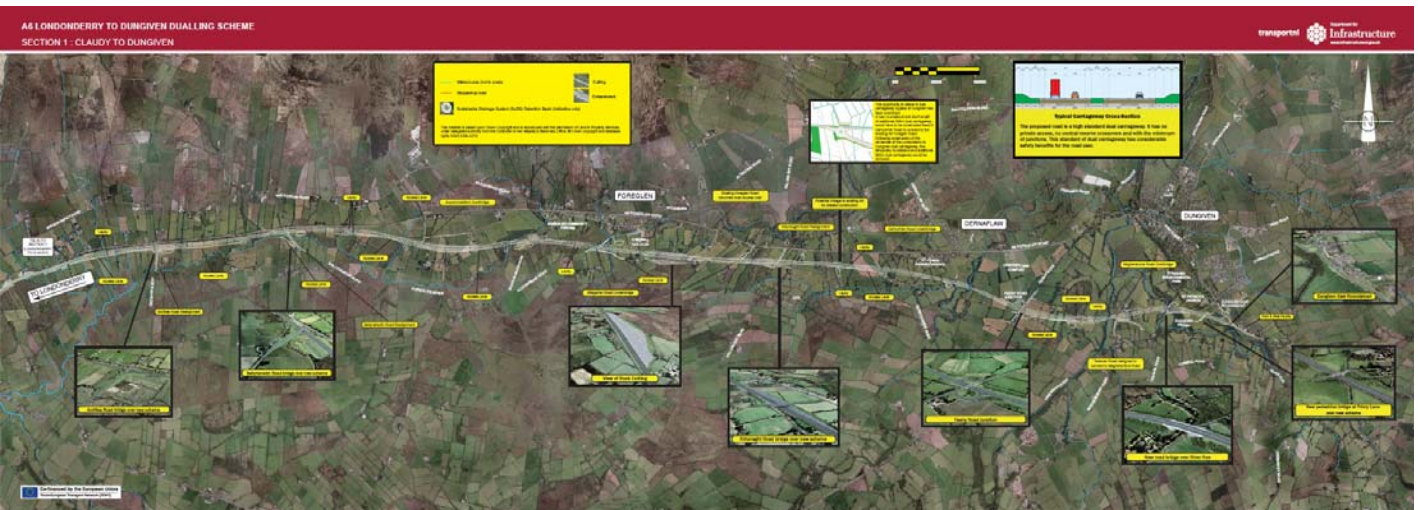
The Regional Strategic Transport Network Transport Plan (RSTN TP) 2015 endorsed the provision of a 30 kilometre dual carriageway from Londonderry to Dungiven, including a dual carriageway bypass of Dungiven. The scheme complements the Ilex Regeneration Plan for Londonderry and the wider North West.

### **Progress Report**

In January 2017, the then Infrastructure Minister Chris Hazzard, decided the Department should take forward the procurement of the 25.5Km Dungiven – Drumahoe section of the A6 Derry to Dungiven Dualling Scheme, including a bypass of Dungiven. The contractor prequalification stage of the procurement process is nearing completion and it is intended that tender documents will issue in early summer.

Liaison with affected landowners is ongoing in advance of the making of the vesting order this summer.

Subject to successful completion of the procurement process it is intended that construction of the Dungiven – Drumahoe section would commence in spring 2018.



**Clady to Dungiven Section of the A6 Improvement Scheme**

Visit <https://www.infrastructure-ni.gov.uk/topics/road-improvements/a6-londonderry-dungiven> to find out more about the scheme.

## SECTION 2

# NETWORK MAINTENANCE

**Network Maintenance Manager: Gary Quinn**

He is supported in the Causeway Coast & Glens area by the following staff



**Austin Montgomery**

Section Engineer  
Causeway Coast & Glens Section Office (West)\*  
County Hall  
Castlerock Road  
Coleraine  
Co. Londonderry  
BT51 3HS  
Tel: 028 7034 1210 Fax: 028 7034 1442  
E-mail:

TNI.CausewayCoast&GlensWest@infrastructure-ni.gov.uk



**James Middleton**

Section Engineer  
Causeway Coast & Glens Section Office (East)\*\*  
Trillick House  
49 Queens Street  
Ballymoney  
BT53 6JD  
Tel: 028 2766 2252 Fax: 028 2766 3518  
E-mail:

TNI.CausewayCoast&GlensEast@infrastructure-ni.gov.uk

\* West = The former council areas of Coleraine and Limavady

\*\* East = The former council areas of Ballymoney and Moyle

## Explanation of Maintenance Operations

### Resurfacing and Strengthening

- Roads deteriorate due to the impact of traffic, age and weathering. Traffic causes rutting in the wheel tracks or polishes and wears the stone reducing the skid resistance. With age the bitumen becomes brittle and the surface becomes less flexible and cracking occurs allows ingress of water which along with frost action causes potholes to form. This deterioration is exacerbated if the road sub base is inadequate.
- Road pavements are normally designed for an operational life of 20 years. During this period and beyond, there is a need for the highway authority to intervene at times to either treat or replace the top course of bituminous material known as the “wearing course” or to provide additional depth to maintain the strength of the pavement and extend its life.
- Resurfacing is the application of one or two layers of mixed material which has an expected life of 7-12 years (which can be extended by subsequent surface dressing) whereas Asphalt has an expected life of 15-20 years but costs more. Wearing course Bitmac is usually laid in a minimum 40 mm thick layer to seal it against the ingress of water, and improves skidding resistance and riding quality. When strengthening of the pavement is required a further layer of courser mixed material is laid usually minimum 60mm thick below the wearing course. The thicker this layer, the more strength provided.
- Resurfacing of existing roads can usually be carried out by overlaying on top of the existing wearing course but where kerb levels or bridge heights are restricted the existing surface may need to be removed by planing.

### Surface Dressing

This process involves spraying a bitumen emulsion binder onto the existing road surface, followed by a layer of stone chippings, which is then rolled. It has three main purposes:-

- to improve skidding resistance of the surface
- to seal the road surface against ingress of water
- to prevent deterioration.

### Slurry Sealing

This process provides similar benefits to traditional 'surface dressing'. However, it has some superior characteristics e.g., has a fast setting time and generally has no loose chippings resulting from the process. It is more expensive than surface dressing and is normally confined to urban areas.

### Micro Surfacing

This material is a cold applied bituminous material similar to slurry sealing with a relatively fast setting time. However it is designed for more demanding locations, uses larger aggregates with a high quality binder, and can be laid in two courses up to a total thickness of 20mm to allow limited surface re-shaping. Its main benefits, as with slurry sealing, are that it can be laid quickly with minimal preparatory work thereby reducing traffic disruption. It is suitable for busy urban roads as the new surface can be trafficked within 15 to 20 minutes.

## **Explanation of Maintenance Operations (cont.)**

### **Drainage Works**

The quick and effective drainage of surface water from the carriageway contributes significantly to the safety of the road. Improvement works carried out include the upgrading of the existing drainage facilities to ensure effective dispersal of surface water and prevent as far as possible the occurrence of standing water or flooding of the road. In many cases the provision of new drainage facilities have to be undertaken including the installation of road gullies, pipes and manholes.

### **Grass Cutting**

Grass cutting is carried out for road safety reasons rather than for amenity purposes. Grass cutting policy allows for routine cutting of 1 swathe width (approximately 1.2m) twice a year in rural areas and in urban areas, five times a year across the full verge width. Areas of verge for sight lines are cut more frequently as required. In some designated urban areas local Councils carry out grass cutting to amenity standards and TransportNI make an appropriate contribution to the cost.

### **Gully Emptying**

Drainage gullies in urban areas are cleaned twice per year and in rural areas once per year. Open outlets are also cleaned once per year. At times, the accumulation of leaves and litter can reduce the effectiveness of gullies and outlets causing local flooding. In such occurrences additional responsive cleaning is carried out.

### **Emergency Assistance**

We have a call centre to deal with emergency calls outside normal office hours. Appropriate personnel can be called upon to deal with emergencies such as flooding on roads, obstructions such as fallen trees, and clearing up after road traffic accidents.

The emergency telephone number is (028) 7035 3202.

## Resurfacing Completed 2016/2017

Route No.	Road Name / Location	Length (m)
<b>West</b>		
<b>Asphalt resurfacing</b>		
A6	Foreglen Road, Dungiven (pictured below left).	530
A37	Broad Road, Limavady.	1422
B69	Seacoast Road, Limavady.	770
B62	Ballybogy Road, Ballybogy.	260
B74	Main Street, Feeny.	500
U304	Hopefield Road, Portrush (pictured below right).	440



U3508	Hazelbank Road, Coleraine.	340
B67	Ballycastle Road	535
U2515	Protestant Street	282
U3548	Magheraboy Road	690
A54	Moneygran Road	340
U3536	Central Ave, Portstewart	125
A54	Castleroe	130
B66	Bann Road, Kilrea	725
B68	Ballyquin Road	1407

## Resurfacing Completed 2016/2017 (cont.)

Route No.	Road Name / Location	Length (m)
<b>West (cont.) Bitmac resurfacing</b>		
A2	Dunluce road	1142
A29	Drumcroon Road, Macleary to Moneybrannon	1933
A29	Carhill Road, Magheramore Road to Lisachrin Road	1315
B68	Irish Green Street (Part)	354
U3535	Prospect Road	310
U3355	Plantation Road at Black gate	630
U2268	Ballyleaghry Road	1079
B66	Craigmore Road , Cam	644
<b>Bitmac Refurbishment schemes</b>		
C538	Kinnyglass Road	91
U3356	Ballyrogan Road	436
C97	Ballytober Road	1039
U3308	Boghill Road	596
U3303	Loguestown Road	385
B69	Baranailt Road	283
U2241	Newline Road	426
U3379	Barnside Road	178
U3379	Springfield Road	581
U3412	Brockagh Road, Glenullin x 2	506
U3412	Glenullin Road	435
U222	Coolagh Rd, Greysteel	190
U2261	Kilhoyle Drumsurnx2	726



## Resurfacing Completed 2016/2017 (cont.)

Route No.	Road Name / Location	Length (m)
<b>East</b>	<b>Asphalt resurfacing</b>	
A2	Cushendall Road, Ballycastle (pictured below left).	550
A2	Tromra Road, Cushendall	1600
A26	Frosses Road, B'money (Greenhill Rd to Knock Rd)	500
A26	Frosses Road, B'money (Seacon Rd to roundabout)	650
A26	Frosses Road, B'money (South from Kilraughts Rd)	450
B16	Kilraughts Road, Ballymoney	915
B66	Upper Main Street, Bushmills (pictured below right).	260
B146	Causeway Road, Currysheskin	850
B147	Main Street, Armoy	130
B62	Gate End/ Milltown Road, Ballymoney	380
U4550	Union Street, Ballymoney	210



## Resurfacing Completed 2016/2017 (cont.)

Route No.	Road Name / Location	Length (m)
<b>East (cont.) Bitmac resurfacing</b>		
B15	Glenshesk Road; 2 locations	300
B146	Causeway Road, Bushmills (Innishfree to the Aird)	1150
B147	Kirk Road, Ballymoney	300
C84	Lagge Road; 2 locations	355
C85	Loughill Road, Cloughmills	900
C86	Knockahollet Road, Loughgiel	400
C87	Moyan Road	310
C93	Seacon Road; 2 locations	335
U3509	Red Road, Bushmills	1100
U4101	Kilmandil Road	255
U4134	Bendooragh Road; 3 locations	410
U5065	Ballykenver Road; 2 locations	160
U5086	Fairhead Road	238

---

**Completed Resurfacing      33.803km**

**At a cost of      £4,549,800**

## Rural Roads Initiative Resurfacing Completed 2016/2017

Route No.	Road Name / Location	Length (m)
<b>West</b>		
<b>Asphalt Resurfacing</b>		
U2254	Drumbane Road, Dungiven	194
C518	Dunlade Road x 2	154
U2407	Corrick Road	147
C95	Ballyclough Rd x 7	1349
U3412	Brockagh Road, Glenullin x 2	506
<b>Bitmac Resurfacing</b>		
U3355	Plantation Road (6 stretches - pictured below left)	913
U3353	Liscall Road	75
U3357	Gortnamoyagh Road (5 Stretches)	596
U3351	Coolnasillagh Road	180
C539	Killeague Road (3 stretches)	425
U3033	Ballyclough Road	180
U3056	Kilmoyle Mill Road	161
U3053	Oldtown Road (2 stretches)	387
U3322	Knocknougher Road (4 stretches)	546
U3326	Ballystrone Road (3 Stretches)	305
U3354	Mettican Road (4 stretches - pictured below right)	433



## Rural Roads Initiative Resurfacing Completed 2016/2017 (cont.)

Route No.	Road Name / Location	Length (m)
<b>East</b>	<b>Asphalt resurfacing</b>	
U4065	Chatham Road, Armoy	35
U4110	Lisboy Road, Cloughmills	180
C89	Tullaghans Road, Rasharkin	30
C79	Glen Road, Waterfoot	80
	<b>Bitmac resurfacing</b>	
C56	Lisnahunshin Road, Rasharkin	175
U4148	Tamlaght Road, Rasharkin	125
C88	Mullan Road, Dunloy	208
C90	Burnquarter Road, Ballymoney	125
C92	Macfin Road, Ballymoney; 2 locations	239
U4062	Conagher Road, Ballymoney; 3 locations	436
U4077	Tullaghgore Road, Ballymoney	160
U4117	Glenlough Road, Ballymoney	54
U4123	Bravallen Road, Ballymoney	12
U4134	Bendooragh Road, Ballymoney; 2 locations	165
C81	Fivey Road, Stranocum; 2 locations	270
U4082	Livery Road, Stranocum	212
U4115	Farren Road, Stranocum	160
U4066	Bregagh Road, Armoy	70
C93	Creamery Road	131
U3417	Ballymenagh Road (2 stretches)	378
C545	Kurin Road	179
U3376	Drumsaragh Road (5 stretches)	1072
U2270	Edenmore Road (2 stretches)	238
U2405	Coolnasallagh Road (2 stretches)	397

## Rural Roads Initiative Resurfacing Completed 2016/2017 (cont.)

Route No.	Road Name / Location	Length (m)
		
		

### East (cont.)

### Bitmac resurfacing

U4086	Shelton Road, Loughguile (pictured above left).	152
U4095	Lislaban Road, Cloughmills (pictured above right).	185
U4071	Mostragee Road, Dervock; 2 locations.	86
U4080	Moyaver Road, Armoy.	123
U487	Glenbush Road, Armoy.	160
U4081	Ballyveely Road, Cloughmills; 2 locations.	234
B15	Glenshesk Road, Ballycastle.	120
C107	Drumnavoley Road, Ballycastle.	30
U5084	Drumaroan Road, Ballycastle; 2 locations.	430
U5087	Craigfad Road, Ballycastle.	120
U88	Murlough Road, Ballycastle; 3 locations.	940
U5077	Glenview Road, Ballycastle.	350
U5077	Greenan Road, Ballycastle.	250
B92	Bay Road, Cushendun.	220

## Rural Roads Initiative Resurfacing Completed 2016/2017 (cont.)

Route No.	Road Name / Location	Length (m)
<b>East (cont.)</b>	<b>Bitmac resurfacing</b>	
U5104	Cloughs Road, Cushendall; 2 locations.	180
U5111	Teahouse Road, Glenariff.	170
U5043	Turfahon Road, Bushmills.	228
U5120	Toberkeigh Road, Bushmills.	200
U5029	Clogher Road, Bushmills.	100
U5053	Carnlelis Road, Mosside.	100
C100	Moycraig Road, Mosside	160
U5056	Drumnaheigh Road, Mosside.	150
U5064	Mazes Road, Mosside; 3 locations.	380
U5064	Doughery Brae, Armoy.	210
U5526	Station Road, Armoy.	130
U5072	Cromaghs Road. Armoy.	100

---

**Rural Roads Initiative Completed Resurfacing 24.814Km**

**At a cost of £1,498,818**

## Proposed Resurfacing 2017/2018

Route No.	Road Name / Location	Length (m)
<b>West</b>		
<b>Asphalt Resurfacing</b>		
A26	Newbridge Road at Damhead	1200
A37	Broad Road, in conjunction with new roundabout	1100
B68	Irish Green Street (completion)	400
A29	Carhill Road (completion)	1930
B192	Drumrane Road	900
C535	Gateside Road/ Cloyfin Road junction	350
B64	Bann Road in association with other works	280
A371	Ballyclose Street, Limavady	320
U3330	Circular Road	266
A29	Ballycastle Road Roundabout	320
<b>Bitmac Resurfacing</b>		
U3340	Glenleary Road	200
<b>East</b>		
<b>Asphalt resurfacing</b>		
B16	Garryduff Road, Ballymoney	970
A2	Mary Street, Ballycastle	350
B16	Glenshesk Road, Ballycastle	450
<b>Total Resurfacing proposed</b>		<b>9.25km</b>
<b>At a cost of</b>		<b>£1,200,000</b>

## Footway Resurfacing Completed 2016/2017

Route No.	Road Name / Location	Length (m)
<b>West</b>		
<b>Asphalt</b>		
U516	Finvola Park, Dungiven Stage 2.	1000
U556	Ardbann Walk, Kilrea (pictured below left).	283
U535	Prospect Road Portstewart Stage 3.	630
U527	The Crescent Coleraine.	460
B201	Upper Captain Street (pictured below right).	620
U3515	Glengal and Glenshesk.	322
A2	Dunluce Road.	1438
U3533	Old Coleraine Road.	70
<b>Paving</b>		
B68	Irish Green Street, Limavady #	354
U2508	Connell Street, Limavady #	289

# schemes funded by Department for Communities





## Footway Resurfacing Completed 2016/2017 (cont.)

Route No.	Road Name / Location	Length (m)
<b>East</b>	<b>Asphalt</b>	
B62	Finvoy Road, Ballymoney.	113
U4550	Ozone Avenue/Union Street, Ballymoney.	100
U4143	Bridge Street, Rasharkin.	38
B147	Newal Road, Ballymoney.	75
U5524	Middlepark Crescent, Cushendall.	279
U5526	Station Road, Armoy.	260
U5514	Woodvale, Bushmills.	130
B16	Garryduff Road Dunloy (Resurfacing Prep).	970
C92	Newbridge Coleraine Road, Ballymoney.	332
U4506	Kirkmoyle View, Ballymoney.	273

**Footway Resurfacing Completed 9.761Km**

**At a cost of £739,000**

## Completed Surface Dressing 2016/2017

Route No.	Road Name / Location	Length (m)
<b>West</b>		
C96	Corbally Road	2157
C96	Ballyhome Road	731
C533	Sconce Road	1623
C537	Castleroe Road	1511
C545	Grove Road	1430
U038	Ballyhome Road	1572
U300	Agherton Lane	618
U323	Bratwell Road	763
U327	Gortycavan Road	650
U328	Blakes Road	2034
U346	Rhee Lane	1518
U359	Magheramore Rd	1765
U365	Clagan Park	857
U369	Killyvalley Road	400
U369	Killyvalley Road	785
U374	Movanagher Road	3608
U377	Blackrock Road	1471
U411	Drumbane Road	1387
U415	Tamnyrankin Road	1837
U257	Gelvin Road	3140
U418	Carhill Old Road	1249
C521	Drum Road	2598

## Completed Surface Dressing 2016/2017 (cont.)

Route No.	Road Name / Location	Length (m)
<b>West (cont.)</b>		
C522	Altmover Road	1931
C523	Carnanbane Road	923
C529	Drumsumn Road	735
U132	Brisland Road	895
U143	School Road	670
U219	Sheskin Road	1513
U220	Vale Road	3205
U226	Loughermore Road	2537
U238	Ballynarrig Road	1918
U238	Ballynarrig Road	1221
U239	Moys Road	1938
U244	Calhome Road	1295
U245	Hillhead Road	1872
U245	Hillhead Road	500
U250	Munalahog Road	1345
U251	Larch Road	991
U253	Curragh Road	2436
U266	Cloghan Road	1237
U271	Ballyavelin Road	1008
U273	Gortgarn Road	1194
U292	Freehall Road	2400
U416	Killyblight Road	1692

## Completed Surface Dressing 2016/2017 (cont.)

Route No.	Road Name / Location	Length (m)
<b>East</b>		
C81	Fivey Road	2548
C84	Coolkeeran Road	2997
C87	Pharis Road	2050
C89	Shanaghy Road	1534
C89	Dirraw Road	2650
C90	Burnquarter Road	640
C90	Vow Road	2833
U4063	Moycraig Road	1577
U4067	Ballykenver Road	3199
U4081	Ballyveely Road	720
U4081	Ballyveely Road	363
U4095	Lislaban Road	966
U4095	Lislaban Road	262
U4096	Carnamenagh Road	1449
U4106	Leitrem Road	1197
U4109	Pinehill Road	1663
U4110	Lisboy Road	2044
U4116	Landhead Road	550
U4120	Station Road	1018
U4120	Presbytery Lane	798
U4133	Enagh Road	1058
U4136	Moneycannon Road	2502
U4137	Scroggy Road	1364
U4138	Drumlee Road	2638
U4143	Bridge Road	1719

## Completed Surface Dressing 2016/2017 (cont.)

Route No.	Road Name / Location	Length (m)
<b>East (cont.)</b>		
U4145	Doneyshiel Road	2048
U4146	Portna Road	1938
U4155	Drumack Road	2534
B15	Gracehill Road	1295
B15	Glenshesk Road	2580
B92	Knocknacarry Road	900
C80	Layde Road	5400
C82	Torr Road	2315
C82	Torr Road	3890
C83	Ballinagard Road	1900
C84	Coolkeeran Road	3820
C101	Islanddarragh Road	1800
C107	Drumavoley Road	2780
U5031	Dundarave Road	1115
U5036	Islandranny Road	1970
U5047	Cabragh Road	1290
U5069	Capecastle Road	1455
U5073	Stroan Road	3475
U5075	Glenbank Road	1165
U5091	Ballyvennaght Road	3990
U5108	Knockans Road	1780
U5121	Carrowcroey Road	260

**Total Surface Dressing Completed 155.439km**

**At a cost of £793,755**

## Surface Dressing Proposed 2017/2018

Route No.	Road Name / Location	Length (m)
<b>West</b>		
B0119-03	Freehall Road	1017
C0091_03	Loughan Road	3030
C0096_02	Ballyhome Road	1922
C0545_02	Grove Road	3500
C0546_01	Boveedy Road	2100
U3322_01	Knocknougher Road	2545
U3323_03	Bratwell Road	1641
U3324_01	Sconce Road	3000
U3336_01	Ballinteer Road	3054
U3337_02	Shinny Road	2002
U3340_02	Kilmaconnell Road	1929
U3342_01	Camus Lane	1625
U3350_01	Shanlongford Road	1601
U3351_01	Gorran Road	3637
C0544_02	Moneydig Road	3350
U3368_01	Cullyrammer Road	3013
U3368_02	Cullyrammer Road	2953
U3371_02	Gortin Road	1931
U3376_02	Drumsaragh Road	3166
C0521-03	Drum Road	1216
C524-01,02	Birren road	4049
U2203-01	Dernaflaw road	1935
U2248-01	Gortnaghey road	1634
U2252-01	Hass road	1639
U2261- 01	Kilhoyle road	2078

## Surface Dressing Proposed 2017/2018

Route No.	Road Name / Location	Length (m)
<b>East</b>		
B15	Glenshesk Road	3700
B147	Ballinlea Road	2190
C100	Moycraig Road	4100
C100	Moycraig Road	3925
U5028	Feigh Road	1190
U4134	Bendooragh Road	2650
U4134	Bendooragh Road	2022
C59	Lisnahuncheon Road	1200
U4069	Livery Road	1043
C91	Vow Road	2681
U124	Lislagan Road	1816
U4140	Lisboy Road	2040
C102	Bregagh Road	1250
C92	Coleraine Old Road	1365
B62	Finvoy Road	1833
B62	Finvoy Road	175
B62	Finvoy Road	1034
<b>Total Surface Dressing proposed</b>		<b>91.314km</b>
<b>At a cost of</b>		<b>£699,000</b>

## Completed Surface Treatment 2016/2017

Route No.	Road Name / Location	Length (m)
<b>West</b>		
U513	Mount Eden 1, Limavady.	123
U513	Mount Eden 2, Limavady.	71
U516	Station Avenue, Dungiven.	130
U516	Lackagh Park, Dungiven.	262
U530	Mill Park off Drumalief Road, Limavady.	88
U530	Bolea Park, Limavady.	79
U535	Prospect Road, Portstewart, Stage 1.	630
B119	Freehall Road From Castle Walk to 30mph signs, Castlerock.	600
U561	Liffock Park From Sea Road to Liffock Crescent, Castlerock.	95
U561	Tunnel Brae From viewing point to end, Castlerock.	120
<b>East</b>		
U26	Runkerry Road, Bushmills.	350

---

<b>Surface Treatment completed</b>	<b>2.548km</b>
<b>At a cost of</b>	<b>£95,000</b>



## Drainage Work Completed 2016/2017

Route No.	Road Name / Location	Length (lin m),/No. of gullies, manholes.
<b>West</b>		
C523	Banagher Road	150m pipe, 6 gullies, 1 manhole.
U235	Carlaragh Road	100m pipe, 4 gullies.
C522	Altmover Road	200m pipe, 8 gullies.
U36	Craigahulliar Road	160m pipe, 8 gullies.
U322	Knocknaugher Road	65m pipe, 3 gullies.
U345	Rusky Park	40m pipe, 2 gullies.
B207	Mullaghinch Road	70m pipe.
U302	Bellemont Road	60m pipe.
U2287	Tirmacoy Road	20m pipe, 2 gullies.
B64	Edenbane Road	90m pipe, 3 gullies.
U3037	Ballywatt Road	30m pipe, 3 gullies.
A54	Moneygran Road	180m pipe, 9 gullies.
U3376	Drumsaragh Road	280m pipe, 11 gullies.
A29	Carhill Road	50m pipe, 4 gullies.
U346	Rhee Lane	85m pipe, 3 gullies.
U2220	Vale Road	10m pipe, 1 gully.
U2206	Killunaght Road WO 1109	230m pipe 10 gullies
U3412	Brockagh Road	420m pipe, 12 gullies
C539	Killeague Road	60m pipe 5 gullies
U2228	Tartnakilly Road	20m pipe 2 gullies

## Drainage Work Completed 2016/2017 (cont.)

Route No.	Road Name / Location	Description
<b>East</b>		
B188	Ballygawley Road	6 gullies
C529	Drumsumn Road	450m pipe, 16 gullies
U2287	Shore Ave	90m pipe 4 gullies & culvert replacement
U2241	Newline Road	240 m pipe and 12 gullies
C97	Ballytober Road	15m pipe, 2 gullies
A29	Drumcroone Road	8 gullies
	Other locations where minor items of drainage were carried out listed below.	
A29	Drumcroone Road	
U2220	Vale Road	
U2515	Massey Avenue	
U2233	Tully Road	
C529	Drumsumn Road	
U2222	Coolagh Road	
<b>West</b>		
C81	Fivey Road	12 gullies/ 412m pipe
U79	Careymill Road	8 gullies/ 200m pipe
U5041	Lagavar/Ballinlea Road	6 gullies/ 240m pipe
C87	Corkey Road	7 gullies/ 320m pipe

**Structural drainage work completed at a cost of £220,286**

## Drainage Work Proposed 2017/2018

Route No.	Road Name / Location	Description
<b>West</b>		
B17	Priestland Road	460m pipe 18 gullies
B207	Mullaghinch Road	70m pipe
B64	Edenbane Road	90m pipe 3 gullies
U3364	Drumeil Road	25m pipe 4 gullies
U3327	Gortycavan Road	60m pipe 2 gullies
C543	Ringrash Road	30m pipe 1 gully
C542	Lisamuck Road	Culvert replacement, 2 gullies
U3331	Cranagh Road	Culvert replacement, 2 gullies
<b>East</b>		
B64	Bann Road, Rasharkin	30m of drainage pipe and 3No. gullies
B147	Ballinlea Road, Ballintoy	2 locations—600m of drainage pipe and 18No. gullies
C89	Dirraw Road, Finvoy	3 locations—150m of drainage pipe and 12 No. gullies
C94	Carncullagh Road, Stranocum	38m of drainage pipe and 2No. gullies
U4065	Chatham Road, Armoy	75m of drainage pipe and 4No. gullies
U4071	Mostragee Road, Stranocum	25m of drainage pipe and 2No. gullies
U4119	Galdanagh Road, Dunloy	31m of drainage pipe and 5No. gullies
<b>Drainage work proposed at a total cost of</b>		<b>£112,000</b>

*Gully emptying works are programmed but most other drainage work is reactive. Additional work will be carried out throughout the year as and when problems arise.*

## Completed Major Utility Works 2016/2017

Utility	Road Name	Scheme Details
<b>West</b>		
Firmus Energy	Coleraine Area Somerset Drive, Somerset Crescent, Somerset Park, Somerset Court, Woodford Park	Gas Main Installation.
Firmus Energy	Portstewart Area Convention Ave, Enfield St, Garden Ave, Heatherlea Ave, Heathmount, Lever Pk, Lever Rd, Lisadell Ave, Mullaghacall Cres / Rd, Old Coach Rd, Sunset Pk, Sunset Ridge.	Gas Main Installation.
Firmus Energy	Portstewart Area Seaview Dr North, West Ave, West Pk, Enterprise Ave, Enterprise Parade, Strand Rd, Ashfield Dr, The Meadows	Gas Main Installation.
NIW	Drumcroon Road, from Moneybrannon Road to Glenleary Road	1.4km of Water Main rehabilitation.
NIW	Edenbane Road	4.5km of Water Main rehabilitation.
NIW	Castleroe Road and Coolyvenny Road	2km of Water Main rehabilitation.
NIE	Portstewart Road Dundooan Road Ring Road Atlantic Road and Burn Road	Power cable and broadband connection from Loguestown Sub station to Coleraine Enterprise zone.
NIE	Portrush Town Centre	Burying existing overhead cabling.
Virgin Media	Limavady and Ballykelly	Connecting 18,000 premises to new fttp broadband.
NIW	Kings Lane, Ballykelly	Water Main rehabilitation work.
NIW	Mullaghinch Road	2.5km of water main abandonment.
NIW	Atlantic Road / Cromore Road	Construction of new sewer below the carriageway and railway.

## Completed Major Utility Works 2016/2017 (cont.)

Utility	Road Name	Scheme Details
<b>East</b>		
NIW	Carnbore Road, Bushmills	Replace Watermain 2.5km
NIW	Glenshesk Road, Ballycastle	Replace Watermain 5.7km
NIW	Haw Road, Bushmills	Replace Watermain 1.1km
NIW	Knock Road, Ballymoney	Replace Watermain 1.6km
Firmus Energy	Kilraughts Road, Ballymoney - Urban	New Gas Main
Firmus Energy	Greenville Avenue, Ballymoney, inc –Richmond Ave & Cresc.	New Gas Main
Firmus Energy	Ashlea Drive, Avenue & Place, Ballymoney	New Gas Main
Firmus Energy	Grange Drive, Laurel Cresc. and, Ashgrove Cresc. Ballymoney	New Gas Main
Firmus Energy	Gordonville Park, Ballymoney	New Gas Main
Firmus Energy	Main Street, High St, Townhead St, Church St, Victoria St, Linenhall St, John St, Charlotte St. Ballymoney	New Gas Main
Firmus Energy	Seymour Street and Drive Ballymoney	New Gas Main

The details above represent the best information available to TransportNI at this time. Service connections for new customers, Emergency & Urgent Works, and Minor Works may also occur.

## Winter Service 2016/2017

The aim of winter service is to ensure, as far as is possible, that main road traffic can move safely and freely in wintry conditions by spreading salt at the most effective times. Criteria have been devised to identify the most trafficked roads that carry approximately 80% of traffic and would provide the best cost benefits with the available budget.

A route optimisation was carried out last year to ensure routes were gritted as efficiently as possible. Importantly there has been no change to the roads included on the gritting schedule, it is simply that the operation is being delivered more efficiently.

Causeway Coast and Glens Depots grit 906km of roads during an action using 14 gritters and 55 staff on rota. The aim is to complete a salting action in just over 3 hours, which is a difficult logistical exercise. Due to the mild weather there were only 61 equivalent full salting actions during the 2016-17 Winter Season; the first action being on 6th November 2016 and the last on 25th April 2017. Approximately 7,300 tonnes of salt was used.

Due to the high costs involved to ensure gritting is carried out when necessary and at the appropriate time, Northern Division have 10 Duty Controllers on rota who take the decision when to grit using information provided by the Met Office and the 21 Transport NI maintained weather stations across Northern Ireland. An additional 4 stations are maintained by the DBFO companies with further data provided from 10 sites in Southern Ireland.

Information on our salting activities continues to be relayed electronically to the broadcast media to ensure that the latest news on road conditions is available to motorists across Northern Ireland. Additional information, including our winter service leaflet, can be found on our website along with advice on driving in poor weather conditions.

## SECTION 3

# NETWORK DEVELOPMENT

**Network Development Manager: Alan Keys**

He is supported in the Causeway Coast and Glens area by the following staff



**Kevin Mullan**

Minor Improvements and Traffic Management  
County Hall  
Castlerock Road  
Coleraine  
BT51 3HS  
Tel: 028 7034 1321 Fax: 028 7034 1442  
E-mail: Kevin.Mullan@infrastructure-ni.gov.uk



**Gary Ross**

Street Lighting  
County Hall  
Castlerock Road  
Coleraine  
BT51 3HS  
Tel: 028 7034 1392 Fax: 028 7034 1442  
E-mail: Gary.Ross@infrastructure-ni.gov.uk

## 3.1 Minor Improvements

### Minor Improvement Schemes Completed 2016/2017

#### **A37/C570 Broad Rd/Greystone Rd - Junction Improvement - £400,000**

A scheme to provide a roundabout at this junction to address a significant collision history along with peak time queuing and delays at Greystone Road was substantially complete at the end of April 2017. The scheme also included resurfacing of the A27 Broad Road between the junctions of Drumsurn and Rathmore Roads.





## Minor Improvement Schemes Completed (cont.) 2017/2018

### **B66 Knock Road, Dervock - Footway - £40,000**

The existing footway (shown below) on the Knock Road, Dervock has been extended to Lisconnan Road. The footway construction was complete on 29th July 2016 at a cost of £40k.



Road, Dervock *before* construction

Knock Road, Dervock *after* construction

K n o c k

In addition Network Development currently has a very limited budget to carry out Minor Improvement schemes in 2017/18. However, the following schemes have been designed in detail and are ready to be taken forward to construction subject to the availability of finance.

### **C529 Drumsurn Rd, Drumsurn Stage 2 - Footway - £36,000**

This proposed footway will involve an extension to the existing footway along the front and south eastern side of No 52 Beech Road and will have the added benefit of improving sight visibility to the right for traffic emerging from Beech Road onto Drumsurn Road. Preliminary utility work has been completed.

### **A6 Foreglen Road - Cycle/Footway Stage 3 - £32,000**

It is proposed to upgrade the remaining 300m section of existing footway opposite Owenbeg GAA facility to the standards applied on the previous stages. This will complete a missing link section of cycle/footway.

### **A2 Aghanloo Road/U92 Freehall Road - Visibility Sight Line Improvement - £75,000**

It is proposed to provide sight visibility splays on either side of this crossroads junction to help improve safety for traffic emerging from the Freehall Road on to the Aghanloo Road.

### **B70 Limavady Road, Garvagh - Footway Link - £36,000**

This proposed 40m footway link will connect the existing footways at No 50 Lyttlesdale. It will require replacing a mature garden frontage and relocation of a masonry wall, 2 street lights and a mini-pillar.

## 3.2 Traffic

### Completed Traffic Schemes 2016/2017

#### Traffic Management Schemes

##### **A26 Frosses Road, Ballymoney.**

The signage at the climbing lane on the Frosses Road has been upgraded.

##### **A37 Dunhill Road, Coleraine.**

The signage at the Springwell climbing lane on the Dunhill Road has been upgraded.

##### **A6 Glenshane Road, Dungiven.**

The signage at the climbing lane on the Glenshane Road has been upgraded.

##### **Dunloy - Speed Limit / Gateway Signage**

A 40mph speed limit has been introduced on the Bellaghy Road approach to the village. New 40mph speed limits were also introduced on the Anticur Road and New Line approaches to Bellaghy Road. Red surfacing and road markings were provided to highlight the introduction of these changes in speed limits on the Bellaghy Road gateway signage.

##### **Carnamuff Road / Nedd Road Ballykelly**

The visibility splays at the Carnamuff Road junction with Nedd Road have been improved.

##### **Windyhill Road / Dunboe Road / Isle Road, Coleraine**

To enhance the warning of this junction, advanced signage with yellow backing boards and road markings have been provided on both Dunboe Road and Isle Road approaches.

##### **Fincarn Cross Roads Feeny**

The B40 Glenedra Road junction with the Altinure Road has been enhanced by replacing the existing 'Give Way' signs by the use of yellow backing boards. 'SLOW' road markings and bend warning signs were also introduced. (See photo below).



## Completed Traffic Schemes 2016/2017 (cont.)

### Traffic Management Schemes (continued)

#### **Baranait Road / Lisnakilly Road, Limavady**

To increase the capacity of the Lisnakilly Road junction with Baranait Road the road markings have been adjusted to allow provision of an additional lane.

#### **A2 Seacoast Road at Bellarena Level Crossing— 40mph Speed Limit**

Working along with the PSNI, TransportNI have introduced a 40mph speed limit on the Seacoast Road between Oughtymoyle and New Road.

### Collision Remedial Schemes

#### **Dunluce Road, Portrush**

'No Overtaking' markings (double white lines) and associated signage have been introduced along the Dunluce Road in the vicinity of the Whiterocks.

### Transportation - Pedestrian Measures

#### **A29 Newbridge Road, Coleraine - Pelican Crossing - £15,000**

A new pelican crossing has been provided on the Newbridge Road on the approach to Lodge Road roundabout.

#### **Rugby Avenue, Coleraine - Pelican Crossing - £15,000**

A new pelican crossing has been provided on Rugby Avenue on the exit from the to Lodge Road roundabout. (See photos of both crossings below).



## Completed Traffic Schemes 2016/2017 (cont.)

### Traffic Calming Schemes

#### Castle Hill View - Ramp to Cushion

Due to issues during icy road conditions a ramp in Castle Hill View has been changed to a cushion type speed reducing feature. This will allow vehicles to straddle the traffic calming feature.

#### Feeny Village - Pedestrian Islands

Traffic Section has introduced 2 pedestrian islands within the village. The aim of these central refuge islands is to curtail inappropriate speeding and to assist pedestrian crossing movement on this through road.

#### Bendooragh - Gateway Scheme

With the aim of curtailing inappropriate speeding central islands with hatching and red surfacing were introduced in the village. Subject to the satisfactory progress through the consultation and legislative stages the scheme includes a proposal to change the existing 40mph speed limit to 30mph and provide an advisory 40mph speed limit for the bend to the northeast.

#### Agherton Road, Portstewart.

Red surfacing with rumble strips, a 'SLOW' marking and a 30mph roundel marking have been provided on the approach to the Agherton Road speed limit with the aim of curtailing inappropriate speeding. (See photos below).



## Completed Traffic Schemes 2016/2017 (cont.)

### Traffic Calming Schemes

#### Safer Routes To School

The following schools have received an upgrade to their existing signage with enhancement by the introduction of red surfacing and 'SCHOOL' markings.

- Macosquin Primary School.
- Portrush Primary School.
- Balnamore Primary School.
- Millburn Primary School, Coleraine.
- St Colum's Primary School, Portstewart.

#### Saint Colum's Primary School

Along with the upgrade and enhancement of the existing signage to encourage pedestrian to cross Lever Road at a safe location a crossing facility was formalised on each approach to the school. The 'School Keep Clear' markings were adjusted to accommodate the provision of new dropped kerbs and tactile paving. (See photos below).



## Completed Traffic Schemes 2016/2017 (cont.)

### Irish Open 2017 – Portstewart

Northern Division staff have been working closely with the European Tour and other stakeholders in the event such as Causeway Coast & Glens Borough Council, PSNI and Tourism NI to help assure that this year's Irish Open being held at Portstewart projects a positive message for the area. A Transport Plan has been developed for the duration of the event to ensure that those attending the event can do so with the minimum of fuss, without adversely affecting the travel requirements of the local population and non event traffic in the area. To this end public transport is being promoted as the preferred option for attending the event and a number of Park & Ride sites will be operating during the event to deal with the numbers expected to travel by private vehicles. Some parking and access restriction will be in place around the course to ensure access is maintained for local residents, public transport and emergency services.

Full details of public transport services, car parking and restrictions on access and parking around the course will be made available online and in media campaigns in the next few weeks.

## Completed Traffic Schemes 2016/2017 (cont.)

### Transportation - Pedestrian Measures (continued)

#### **Main Street, Ballymoney - Audible Signals for Crossing at Traffic Signals - £24,000**

To enhance pedestrian / disabled access for crossing movements at the Main Street/ Meetinghouse Street/Castle Street/Seymour Street junction audible signals have been introduced.

#### **Garryduff Road, Ballymoney — £12,000**

To enhance pedestrian / disabled access dropped kerbs along with tactile paving was provided along the Garryduff Road from its junction with the Ballymena Road to the Joey Dunlop Leisure Centre.

#### **Main Street, Bushmills — £2,000**

To assist pedestrians cross the road safely a crossing build-out was constructed in the vicinity of the Spar shop and Bushmills distillery.

#### **Ballycastle Road - Pedestrian Islands — £6,000**

The Traffic Section has introduced 2 pedestrian islands on the Ballycastle Road. The aim of these central refuge islands is to assist pedestrian crossing movement on this through road and to curtail inappropriate speeding.

#### **Roemill Road / Ballyquin Road, Limavady — £2,500**

Traffic Section has provided a short footway link between the Roemill Road and the Ballyquin Road junction.

### Transportation - Cycle Measures

#### **Atlantic Road, Portrush**

TransportNI is in the process of vesting additional land in the vicinity of Carnalridge Primary School, Portrush with a view to completing the link between the school and the existing cycle path in 2017/18 should additional finance become available.

### Transportation - Bus Measures

#### **Oughtymoyle, Limavady.**

To assist bus manoeuvres the lay-by at Oughtymoyle has been upgraded.

## Completed Traffic Schemes 2016/2017 (cont.)

### Minor Traffic Management Measures Completed

**Knock Road Ballymoney** - 'Junction on Bend' warning signs on Knock Road either side of Lisconnan Road.

**Vow Road at Coral Close, Ballymoney**, - 'Junction on Bend' warning signs on Vow Road either side of Coral Close.

**John Street, Ballymoney** - new double yellow lines corner restrictions.

**Main Street, Rasharkin** - double yellow lines on Main Street near the junction of Gortahar Road.

**Castle Street, Ballymoney** - 'Keep Clear' markings at entrance to Our Lady of Lourdes School.

**Tamlaght Road / Townhill Crossroads Rasharkin** - 'Stop' signs and 'SLOW' road marking

**Tamlaght Road, Rasharkin** - 'Bend warning' signs and 'SLOW' road markings.

**Vow Road, Bendooragh** - Two 'SLOW' road markings near Eden Primary School.

**A44 Magheramore Road, Ballycastle** - 'Double Bend' warning signs and 'SLOW' road marking.

**Portstewart Road, Coleraine** - A '3 hour waiting' restriction in the Lay-by near the university has been introduced.

**Bayhead Road, Portballintrae** - waiting restrictions along the seaward side opposite the Bayview Hotel.

**Kilmandil Road, Cloughmills** - Verge markers on a bend prior to the bridge.

**Killowen Primary School, Coleraine** - New 'SCHOOL' signage.

**Kenmara Park, Ballycastle** - 'No Through Road' signage.

**Elim Church, Ballymoney** - New directional signs.

**Bravallen Road, Ballymoney** - Replacement 'Cycle' signage.

**Bridge Street, Cushendall** - A directional arrow has been provided along with an 'A2' road marking on Bridge Street.

**A2 Coast Road, Glenariff at Red Arch** - signage and road markings on the approach to a number of bends in the vicinity of the Red Arch have been upgraded



## Completed Traffic Schemes 2016/2017 (cont.)

### Minor Traffic Management Measures Completed

**Derryork Road, Limavady** - 'Bend' warning sign, chevrons, verge markers and 'SLOW' road markings.

**Drumsurn Road, Limavady** - 'SLOW' road markings near house number 94.

**Ballyquinn Road, Limavady** - 'SLOW' road markings near the Gelvin Road junction.

**Dukes Lane, Ballykelly** - Removed redundant 15mph road sign.

**Broad Road, Keady** - Junction warning signs have been upgraded.

**Windyhill Road, Limavady** - New Chevron signs on the bend before Bishops Road.

**Cashel Road, Garvagh** - Provision of Cattle Warning signs.

**Coleraine Town Centre** - New vehicular and pedestrian directional signs to the 'Visitor Information Centre'.

**Portrush Town Centre** - New vehicular and pedestrian directional signs to the 'Visitor Information Centre'.

**Seacoast Road, Bellarena** - Bend Warning signs have been upgraded.

**Seacoast Road, Aghnaloo Road junction to Lisnakilly** - Bend Warning signs upgraded.

**Eglinton Street/Mark Street, Portrush** - Yellow box markings have been provided at this junction.

**Mark Street, Portrush** - Provision of an entrance marking 'H' bar.

**Church Street, Portstewart** - Provision of an entrance marking 'H' bar.

**Cloyfin Road, Coleraine** - Provision of Bus Stop markings.

**Mussendun Road, Downhill** - Provision of double yellow line corner restrictions.

**Seacoast Road, Benone** - Provision of 'SLOW' road markings.

**Garvagh** - New gateway signs to Garvagh on the Limavady Road and Edenbane Road have been provided.

**Ballyrashane Church** - A directional sign to Ballyrashane Church has been provided.

**Directional Signage** - Within the Causeway Coast & Glens Borough Council region a number of the existing direction signs have been replaced.

## Completed Traffic Schemes 2016/2017 (cont.)

### Minor Traffic Management Measures Completed

**Ballintoy Harbour** – an additional information sign 'Unsuitable for buses, coaches, caravans, motorhomes' has been provided.

**Limavady Tourist Office and Information Centre** - Consultations are taking place with Council staff regarding the provision of new directional signs for the tourist office.

**Faughanvale GAA** - Provision of a right turn pocket on A2 Clooney Road at the entrance to this facility.

### Traffic Control Permits (Road or Lane closures)

Subject to a number of exemptions, it is an offence under the Roads (NI) Order 1993 to carry out work on a public road without prior authorisation from TransportNI.

Contractors are required to take out a traffic control permit indicating their preferred traffic management plan. Before approval each permit requires to be fully assessed against the 'Traffic Signs Manual' for traffic safety measures and signs for road works including consultation with Translink and emergency services.

Within the Causeway Coast & Glens Borough a total of **363** traffic control permits have been dealt with and approved within 2016/17 financial year.

### Traffic Section Correspondence

Within Causeway Coast and Glens Borough in 2016/17 Traffic Section staff have replied to 226 written queries including 10 from MP's, 69 from MLA's and 61 from councillors.

### Irish Open 2017 – Portstewart

Northern Division staff have been working closely with the European Tour and other stakeholders in the event such as Causeway Coast & Glens Borough Council, PSNI and Tourism NI to help assure that this year's Irish Open being held at Portstewart projects a positive message for the area.

A Transport Plan has been developed for the duration of the event to ensure that those attending the event can do so with the minimum of fuss, without adversely affecting the travel requirements of the local population and non event traffic in the area. To this end public transport is being promoted as the preferred option for attending the event and a number of Park & Ride sites will be operating during the event to deal with the numbers expected to travel by private vehicles. Some parking and access restriction will be in place around the course to ensure access is maintained for local residents, public transport and emergency services.

Full details of public transport services, car parking and restrictions on access and parking around the course will be made available online and in media campaigns in the next few weeks.

## Proposed Traffic Schemes 2017/2018

### Traffic Management Schemes

#### **A29 Dunhill Rd /Greenhall Highway at Greenmount Roundabout**

To improve the stacking length for vehicles exiting the Greenhall highway it is proposed to make slight alterations to the existing kerb. To improve road safety and driver behaviour It is also proposed to alter Coleraine bound exit radius on to the A29 Dunhill Road.

#### **Ballycastle Road Roundabout, Coleraine**

To improve road safety and driver behaviour it is proposed to alter the town centre bound exit radius on Ballycastle Road.

#### **Railway Place, Coleraine**

Traffic Section are continuing to assess the parking arrangements along with the pedestrian and traffic movement in and around Railway Place. An agency meeting to discuss various options at this location is planned within the next month.

### Collision Remedial Schemes

#### **Revallagh Cross Roads, Coleraine**

##### **(B62 Ballybogey Road / B17 Cloyfin Road / B17 Priestland Road)**

Subject to the successful acquisition of land and the availability of finance, it is proposed to carry out a collision remedial scheme to improve safety at this junction.

### Traffic Calming Schemes

#### **Safer Routes To School**

Safer Routes to Schools assessments have been carried out on routes in the vicinity of all primary schools within the Causeway Coast and Glens Borough Council area. These assessments will consider the need for the provision of upgrades to the existing school warning signs including red coloured surfacing. These measures form part of initiatives aimed at introducing enhanced traffic management and speed management measures at schools. The Safer Routes to Schools Initiative also encourages alternative modes of travel for the school journey such as walking, cycling, and bus use.

Due to the current challenging economic climate which is having a huge impact on the potential delivery of schemes there are no proposals to introduce new flashing signs at this time. However subject to the availability of finance the following schools have been listed to receive upgraded signage with enhancement by the introduction of red surfacing and School markings.

- Coleraine College - Carthall Road
- Loreto College - Castlerock Road
- Lislagan Primary School

## Proposed Traffic Schemes 2017/2018 (cont.)

### Transportation - Pedestrian Measures

#### **Glenkeen Road (Diamond Garage), Aghadowey. — £20,000**

Subject to the availability of finance Traffic Section has proposals to provide a footway to link the shop /post office with the existing footway at the housing on the Glenkeen Road.

#### **Provision of Dropped Kerbs.**

Subject to the availability of funding to enhance pedestrian / disabled access dropped kerbs may be provided at a number of locations as identified throughout the year.

### Transportation - Cycle Measures

#### **Atlantic Road, Portrush**

TransportNI is in the process of vesting additional land in the vicinity of Carnalridge Primary School, Portrush. Subject to the availability of finance the completion of the link between the school and the existing cycle path will be progressed.

### Transportation - Bus Measures

#### **Bus Measures**

Subject to the availability of finance Traffic Section will consider minor improvements to bus stops as identified e.g. short footway links or hard standing areas where bus shelters are being provided. Requests for improvements at particular locations will be assessed for inclusion in the programme.

## Proposed Traffic Schemes 2017/2018 (cont.)

### Minor Traffic Management Measures Proposed

**Queen Street Ballymoney** – it is proposed to provide a disabled parking bay at Mathewson Chemists.

**Causeway Road** – ‘No Waiting at any time’ double yellow lines restrictions on Causeway Road from The Aird village to the existing double yellow lines near the entrance to Visitors Centre car park are proposed.

**Main Street Bushmills** – It is proposed to provide a ‘Loading’ bay at the Co-op supermarket. It is also proposed to revise the waiting restrictions on Main Street from ‘1 hour with no return within 1 hour’ to ‘2 hours with no return within 2 hours’.

#### **Kilrea Town**

Traffic Section are carrying out an assessment of the waiting restriction within the town.

#### **Beresford Avenue**

A consultation exercise to consider ‘no waiting at any time’ double yellow lines and a small section of ‘working day restriction’ Monday to Friday 8am to 6pm on Beresford Avenue is being progressed.

#### **Strand Road, Portstewart at Strand Beach Entrance**

A consultation exercise to consider extending the ‘No Waiting at any time’ double yellow lines restrictions on Strand Road to the beech entrance is being progressed.

## 3.3 Street Lighting

### Street Lighting Schemes 2016/2017

The total number of lights in the council area is now 25,747

We are currently providing a normal street lighting repair service and will continue to do as long as funding permits.

We would encourage public representatives to let us know about any street lighting defects by phoning 03002007899 or online at <http://www.nidirect.gov.uk/street-lighting-and-reporting-a-fault>.

### Schemes Completed 2016/2017

Area	Location	No. of lights working	Scheme Type
Coleraine	Bushmills Road RAB	31	Upgrade
Coleraine	Portrush Road RAB	30	Upgrade
Coleraine	Cairn Road	10	Upgrade
Coleraine	Cairnmount Park	6	Upgrade
Coleraine	Cairn Gardens	4	Upgrade
Coleraine	Redlands Crescent	4	Upgrade
Coleraine	Beresford Avenue	4	Upgrade
Coleraine	Dunhill Road	63	Lantern Upgrade
Coleraine	Greystone Park	5	Upgrade
Coleraine	Maybrook Park	20	Upgrade
Coleraine	Nursery Avenue	3	Upgrade
Coleraine	Terrace Row	3	Upgrade
Coleraine	Beresford Road	4	Upgrade
Coleraine	Castleroe Road	2	Upgrade
Coleraine	Upper Captain Street	8	Upgrade

## Schemes Completed 2016/2017 contd.

Area	Location	No. of lights working	Scheme Type
Coleraine	Ballylintagh Crescent	4	Lantern Upgrade
Coleraine	Mullaghinch Road, Cullycapple	19	Lantern Upgrade
Coleraine	Cullycapple Road, Cullycapple	4	Lantern Upgrade
Portstewart	Seaview Drive North	11	Upgrade
Portstewart	Regent Park	5	Upgrade
Portstewart	Winston Drive	9	Upgrade
Portstewart	The Promenade Public Realm Scheme in conjunction with DFC.	9	Upgrade
Portstewart	Millstone Court	3	Upgrade
Portrush	Coleraine Road	8	Upgrade
Ballymoney	Bann Road, Bendooragh	2	Upgrade
Ballymoney	Cloneen Drive	2	Lantern Upgrade
Ballymoney	Frosses Cycle Path	7	Lantern Upgrade
Ballymoney	Gault Park	9	Upgrade
Ballymoney	Cockpit Brae	1	Lantern Upgrade
Bushmills	Whitepark Road	3	Upgrade
Bushmills	Haughys Row	2	Lantern Upgrade
Portballintrae	Bayhead Park	7	Upgrade
Portballintrae	Ballaghmore Avenue	15	Upgrade

## Schemes Completed 2016/2017 contd.

Should further resources become available the following is a list of schemes proposed for Upgrading/New Provision.

Area	Location	No. of lights working	Scheme Type
Limavady	Connell Street in conjunction with DFC	23	Upgrade
Limavady	Broad Road Junction improvement	24	Upgrade
Limavady	Scroggy Road	2	Upgrade
Dungiven	Rannyglass Phase 1	14	Upgrade
Dungiven	Muldonagh Road	13	Lantern Upgrade
Ballycastle	Glentaisie Drive Phase 1	7	Upgrade
Magherahoney	Erinvale	1	Upgrade
Kilrea	Ardbann Avenue	9	Upgrade

**Total number of lights working 410**

Should further resources become available the following is a list of schemes proposed for up-grading/new provision.

Area	Location	Scheme Type
Dungiven	Rannyglass Phase 2	Upgrade
Ballymoney	Ballymoney Bypass (replacement poles)	Upgrade
Ballycastle	Glentaisie Drive Phase 2	Upgrade
Ballycastle	Cushendall Road	Upgrade
Cloughmills	Drumadoon Road	Upgrade
Limavady	Limavady Bypass	Lantern Upgrade
Limavady	Broad Road	Lantern upgrade
Greysteel	Clooney Road	Lantern upgrade



## SECTION 4

# NETWORK PLANNING

**Network Planning Manager: Cathal Brown**

He is supported in the Causeway Coast & Glens area by



**Sean Mullan**

(covering former council areas of Limavady, Coleraine, Ballymoney & Moyle)

Development Control, Private Streets and Area Plans

County Hall

Castlerock Road

Coleraine

BT51 3HS

Tel: 028 7035 9990 Fax: 028 7034 1442

E-mail: Victor.Sinclair@infrastructure-ni.gov.uk



**Raymond Scott**

Highway Structures

County Hall

Castlerock Road

Coleraine

BT51 3HS

Tel: 028 70341536 Fax: 028 7034 1442

E-mail: Raymond.Scott@infrastructure-ni.gov.uk

## 4.1 Development Control

### Planning Applications

Planning Service forward planning applications to the Development Control Section of TransportNI for scrutiny of the road issues, including access arrangements, parking standards and provision, and road layout and geometry. The road widths, radii, gradients, drainage and other construction data are checked against departmental standards. Development Control also checks the visibility splays and forward sight distances at the vehicle access points.

The Private Streets Order 1980 is applied if the street is to become public and maintained by the Department. The Development Control Section determines the area to be adopted, calculates the bond amount, arranges the supervision of the construction of the private street and, following satisfactory completion of the street(s) by the developer, arranges for adoption into the public road network. If necessary, the Department can take appropriate enforcement action to ensure completion of the street.

Other work includes Property Enquiries, Planning Appeals and the approval of road access works via the Roads (NI) Order 1993.

During the period 1 April 2016 to 31 March 2017 Development Control Section dealt with:-

Planning Applications	1713
Pre-Planning Enquiries	49
Planning Applications involving Private Streets Order	21

### Adoptions

The Department adopted 1618 m of carriageway and 713 m of footway. Developments adopted by TransportNI during this period are listed below:-

Development	Carriageway (m)	Footway (m)	Date
Ballyquin Road		166	27/04/2016
Glenkeen Road, Coleraine	5	85	27/04/2016
Millrush Drive and Mews, Portstewart	53		05/05/2016
Millrush Drive and Mews, Portstewart	72		05/05/2016
Atlantic Road, Portrush	235		23/05/2016
The Elms, Off Atlantic Road, Coleraine	8	125	13/06/2016
Off Atlantic Road, Coleraine	8	75	13/06/2016
Dart Fort Drive, Portballintrae	125	143	05/07/2016
Millstone Court, Portstewart	79		26/07/2016
Cappaghmore Mews, Portstewart	15		14/09/2016

## Adoptions (cont.)

Development	Carriageway (m)	Footway (m)	Date
Cappaghmore Mews, Portstewart	38		14/09/2016
Castlewood, Dervock	3		05/08/2016
Milltown Avenue, Ballymoney		57	14/09/2016
Milltown Avenue, Ballymoney	66		14/09/2016
Church Bay, Rathlin	50		14/09/2016
Straid Road, Ballycastle		62	17/10/2016
Bamford Court, Rasharkin	63		06/12/2017
Bann Road, Ballymoney	57		15/03/2017
Bann Road, Ballymoney	32		15/03/2017
Bann Road, Ballymoney	90		15/03/2017
Station Road, Portstewart	60		15/03/2017
Station Road, Portstewart	147		15/03/2017
Station Road, Portstewart	160		15/03/2017
Station Road, Portstewart	126		15/03/2017
Station Road, Portstewart	126		15/03/2017

## 4.2 Maintenance of Structures

### Structural Maintenance Work Completed 2016/2017

The Structures Section manages the 1,327 bridges and culverts with a span of 1.8m and greater within the Division, there are 684 of these structures in the Causeway Coast & Glens area. Smaller structures are managed by the local Section Office.

Route No.	Name	Description	Cost
U274 Bolea Road	Dunmore	Repaired and painted deck soffit. Replaced missing concrete at invert and apron.	£41,260
U91 Ballyvennaght Road	Mallanadeevan	Repaired cracked and bulging parapets. Sealed deck soffit and verges to prevent the ingress of water.	£21,898
C84 Corkey Road	Ballynagabog	Demolished and rebuilt parapets. Removed trees, repaired invert and resurfaced carriageway. (see photograph below).	£22,207



## Structural Maintenance Work Completed 2016/2017 (cont).

Route No.	Name	Description	Cost
A2 Aghanloo Road.	Ballycastle	Upgraded downstream parapet to meet current containment standards.	£20,491
B40 Glenedra Road	Finglen	Replaced missing masonry and repaired scoured invert.	£16,741
B69 Baranailt Road	Blantagh	Demolished and rebuilt parapets. Replaced missing concrete on	£17,854
C523 Magheramore Road	Turmeel 2	Realigned parapet and reset Vehicle Restraint System.	£14,733
C91 Montsandel Road	Fishloughan	Repaired undermined wingwall. Installed weepholes and upgraded drainage to prevent ingress of water.	£10,335
C81 Glenann Road	Tavnaghoney	Replaced copings on parapet. Repaired masonry on both aprons	£10,662
A2 Quilly Road	Articlave 1	Removed vegetation and re-pointed structure. Repaired undermined abutment, repaired damaged wingwalls and parapets.	£9,869
C536 Newmills Road	Goreys Flush	Demolished existing parapets and rebuilt to current containment standards.	£7,622
U404 Teeavan Road	Crabarkey 1	Demolished existing parapets and rebuilt to current containment standards. Concreted verges to stop the ingress of water.	£5,225
U47 Crabragh Road	Islandrose	Repaired damaged parapets and wingwalls. Replaced missing concrete at invert.	£4,112
B16 Garryduff Road	Culdoo	Repaired wingwalls and scoured invert.	£4,340
C527 Gortnacross Road	Middle Gelvin	Removed vegetation and re-pointed structure. Repaired displaced cutwater.	£3,140
U80 Churchfield Road	Losset	Repaired wingwalls and scoured invert.	£3,333
C521 Pollys Brae Road	Glenconway	Removed vegetation & trees. Raised parapets to meet current containment standards.	£3,050

## Structural Maintenance Work Completed 2016/2017 (cont).

Route No.	Name	Description	Cost
B96 Townhill Road	Glebe	Removed vegetation, repaired wingwalls and built new parapets walls. (See photograph below)	£9,295



U366 Brone Road	Moneycarrie	Repaired parapet and sealed deck soffit.	£2,750
C104 Gault's Road	Cloghs	Removed vegetation, repointed and rebuilt section of parapet. Repaired downstream scoured invert.	£2,710
A29 Ring Road	Bellasses	Removed vegetation, re-pointed and repaired scouring.	£1,781
U372 Carrowreagh Road	Culnaman	Removed vegetation, repaired parapet and wingwall.	£1,260
A26 Newbridge Road	Loughanreagh South	Removed vegetation and cleared channels. Rebuilt parapet and pillar.	£1,935

**Structural Maintenance work proposed at a cost of £239,540**

## Structural Maintenance Work Proposed 2017/2018

Schemes on this list may be substituted or altered depending on finance and developing circumstances throughout the year.

Road No	Name	Description	Estimate
A2 Aghanloo Road	Ballycastle	Demolish and rebuild upstream parapet to meet current standards.	£20,000
A2 Cushendall Road	Bonamargy	Repair scoured inverts.	£15,000
B66 Bann Road	Agivey	Renew joints and re-waterproof bridge deck in conjunction with resurfacing work.	£40,000
U47 Ballydevit Road	Ballywillin	Renew joints and resurface carriageway.	£10,000
B201 Dowland Road	Castle	Install gabion walling and renomattress to prevent eroding of river bank and undermining of bridge abutments.	£25,000
A6 Glenshane Road	Eden 4	Repair scoured invert.	£35,000
C107 Drumavoley Road	Drumavoley	Remove tree and vegetation. Rebuild distorted parapet and repair hole in invert.	£2,000
U77 Greenan Road	Greenan	Repair undermined apron and wingwall. Remove debris from inverts.	£5,000
C82 Torr Road	Drumakelter	Remove debris from invert. Repair undermined abutment and scoured invert.	£3,000
A2 Cushendall Road	Corratavey	Rebuild Parapet walls.	£5,000
B201 Windyhill Road	Dirtagh	Rebuild Parapet wall.	£3,000
U230 Tartnakelly Road	Glack	Remove vegetation and repair damaged concrete invert and aprons.	£2,000
C524 Birren Road	Calhame	Upgrade parapets to meet current standards.	£10,000

**Structural Maintenance work proposed at a total cost of £175,000**

## Road Restraint System Upgrade Work Completed 2016/2017

Route No.	Name	Description	Cost
A43	Glenariff Road	Upgraded 40m Vehicle Restraint System to meet current policy and specification. (See before and after photographs below).	£14,663



---

Road Restraint System Upgrade work completed at a total cost of £14,663



## Proposed Road Restraint System Upgrade Work 2017/2018

Schemes on this list may be substituted or altered depending on finance and developing circumstances throughout the year.

Route No.	Name	Description	Estimate
B15	Glenshesk Road	Upgrade 22m Vehicle Restraint System to meet current policy and specification.	£26,000
B14	Ballyemon Road	Upgrade 12m Vehicle Restraint System to meet current policy and specification.	£16,000
B17	Straid Road	Upgrade 155m Vehicle Restraint System to meet current policy and specification.	£55,000
C99	Carnbore Road	Upgrade 105m Vehicle Restraint System to meet current policy and specification.	£35,000
U117	Glenlough Road	Upgrade 320m Vehicle Restraint System to meet current policy and specification.	£110,000
U123	Bravallen Road	Upgrade 28m Vehicle Restraint System to meet current policy and specification.	£7,000
U110	Glassmullen Road	Upgrade 30m Vehicle Restraint System to meet current policy and specification.	£25,000
U500	Mill Street	Upgrade 17m Vehicle Restraint System to meet current policy and specification.	£7,000

---

**Road Restraint System Upgrade work proposed at a total cost of £281,000**

**CAUSEWAY COAST & GLENS  
 BOROUGH COUNCIL**

Gritting Routes ———

