



Department for
Infrastructure

An Roinn

Bonneagair

www.infrastructure-ni.gov.uk

EASTERN DIVISION

Report to

**LISBURN & CASTLEREAGH
CITY COUNCIL**

Spring 2017



INVESTORS
IN PEOPLE

CONTENTS

PAGE

	FOREWORD BY DIVISIONAL ROADS MANAGER	iii
1.0	INTRODUCTION	1
2.0	NETWORK DEVELOPMENT / SRIT	11
	2.1 Minor Works	12
	2.2 Maintenance of Structures	13
	2.3 M1/A1 Link at Sprucefield	17
	2.4 M1 City Bound Hard Shoulder Bus Lane	18
	2.5 A1 Junctions – Phase 2	18
3.0	NETWORK TRAFFIC AND STREET LIGHTING	19
	3.1 Collision Remedial Schemes	20
	3.2 Pedestrian Measures	20
	3.3 Traffic Signs and Information	20
	3.4 Dropped Kerbs/Mobility Ramps	22
	3.5 Carriageway Markings	22
	3.6 Legislation	23
	3.7 Disabled Parking Bays	24
	3.8 Safer Routes to School	24
	3.9 Traffic Schemes	24
	3.10 Traffic calming	25
	3.11 Cycle Measures	25
	3.12 Car Parking	26
	3.13 Street Lighting	26
	3.14 Transportation Measures	27
4.0	NETWORK TRANSPORT TELEMATICS	29
	4.1 Network Transport Telematics	30
5.0	NETWORK MAINTENANCE	33
	5.1 Carriageway Resurfacing	34
	5.2 Footway Resurfacing	37
	5.3 Surface Dressings	37
	5.4 Drainage	40
	5.5 Verge Strengthening Schemes	41
	5.6 Carriageway Refurbishment	42
	5.7 Liaison with Utilities	42
6.0	NETWORK PLANNING	45
	6.1 Adoptions	46
	6.2 Planning Applications	47

FOREWORD BY THE EASTERN DIVISIONAL ROADS MANAGER



Kevin Monaghan
Divisional Roads Manager

Mayor, Aldermen and Councillors

I am very pleased to present my Spring Report on Department for Infrastructure Roads work to Lisburn & Castlereagh City Council.

Eastern Division covers the two Council areas of Belfast and Lisburn & Castlereagh. It is one of four Divisions, each of which manages, improves and maintains the transport network and is the primary contact point for road users and public representatives.

This report deals with works completed in the Lisburn & Castlereagh City Council area during the year 2016/17 and sets out our programme of schemes being undertaken in the year 2017/18. There are pressures on both capital and resource funding again in 2017-18. On the capital side, my staff will continue to develop resurfacing and traffic management schemes to enhance safety, to improve traffic flow and provide measures for pedestrians and cyclists. The Department will also continue to bid in monitoring rounds for further capital funding for structural maintenance to maintain the integrity of the road network.

On the resource side, we started the year only being able to deliver a reduced routine maintenance service. However, we have secured additional funding for repair of rural roads and if in year bids in monitoring rounds are successful, the funding will immediately be used to normalise this service.

I am pleased to report that a wide programme of Local Transport and Safety Schemes was delivered last year. I am also pleased to report that a large programme of maintenance schemes was delivered in 2016/17, through successful in-year monitoring bids, despite a low level of funding being available at the start of the financial year. I would encourage Councillors to continue to contact the relevant members of my staff in relation to operational matters and they will do their best to assist.

I hope that you find this report informative. DfI Roads values constructive comment on all its activities and I look forward to meeting Council members on 14th June 2017.

Kevin Monaghan
Divisional Roads Manager
Eastern Division
'Hydebank'
4 Hospital Road
Belfast BT8 8JL

1.0 INTRODUCTION

Eastern Division is part of the Roads structure, within the Department for Infrastructure, made of separate Divisional business units who order services (within Network Services Directorate) and those who provide services in the Engineering Directorate (Design & Consultancy Services and Operations & Maintenance) (see figure 1 below).

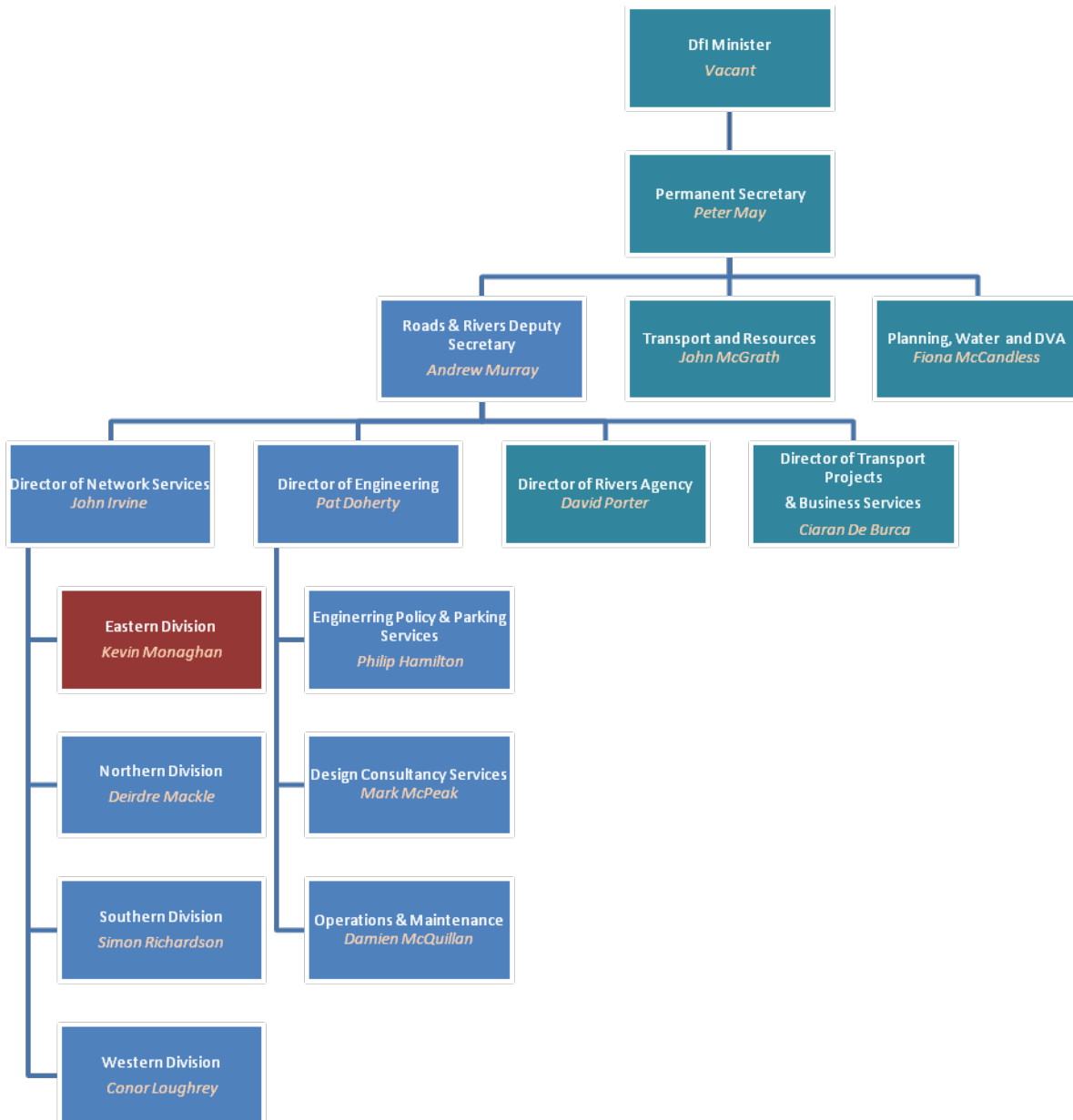


Figure 1 – Organisation Context

Eastern Division Management Structure



Kevin Monaghan (9025 3001)
kevin.monaghan@infrastructure-ni.gov.uk
Divisional Roads Manager



Philip Robinson (9025 3080) philip.robinson@infrastructure-ni.gov.uk
Network Traffic and Street Lighting

Traffic Management minor improvements, pedestrian priority, traffic orders, signing, collision remedial schemes, Street Lighting, resident and disabled parking, car parks and pay and display spaces, cycling and traffic calming. BRT infrastructure delivery and QBC & bus priority 'Park and Ride schemes



Lionel Walsh (9025 3060) lionel.walsh@infrastructure-ni.gov.uk
Network Planning

Development Control, Private Streets and Transport Assessments



Roy Gordon (9025 4500) roy.gordon@infrastructure-ni.gov.uk
Network Transport Telematics

Traffic signal control, operation of the Traffic Information and Control Centre, Traffic and travel information and European projects INSTANT and STREETWISE.



Attracta Tremers (9025 3036) attracta.tremers@infrastructure-ni.gov.uk
Business Support

Financial control, land acquisition and disposal, retained human resources, building management and office supplies, council reports, business plan and communications.



Stephen Pollock (9025 3071) stephen.pollock@infrastructure-ni.gov.uk
Network Development / Strategic Route Improvements

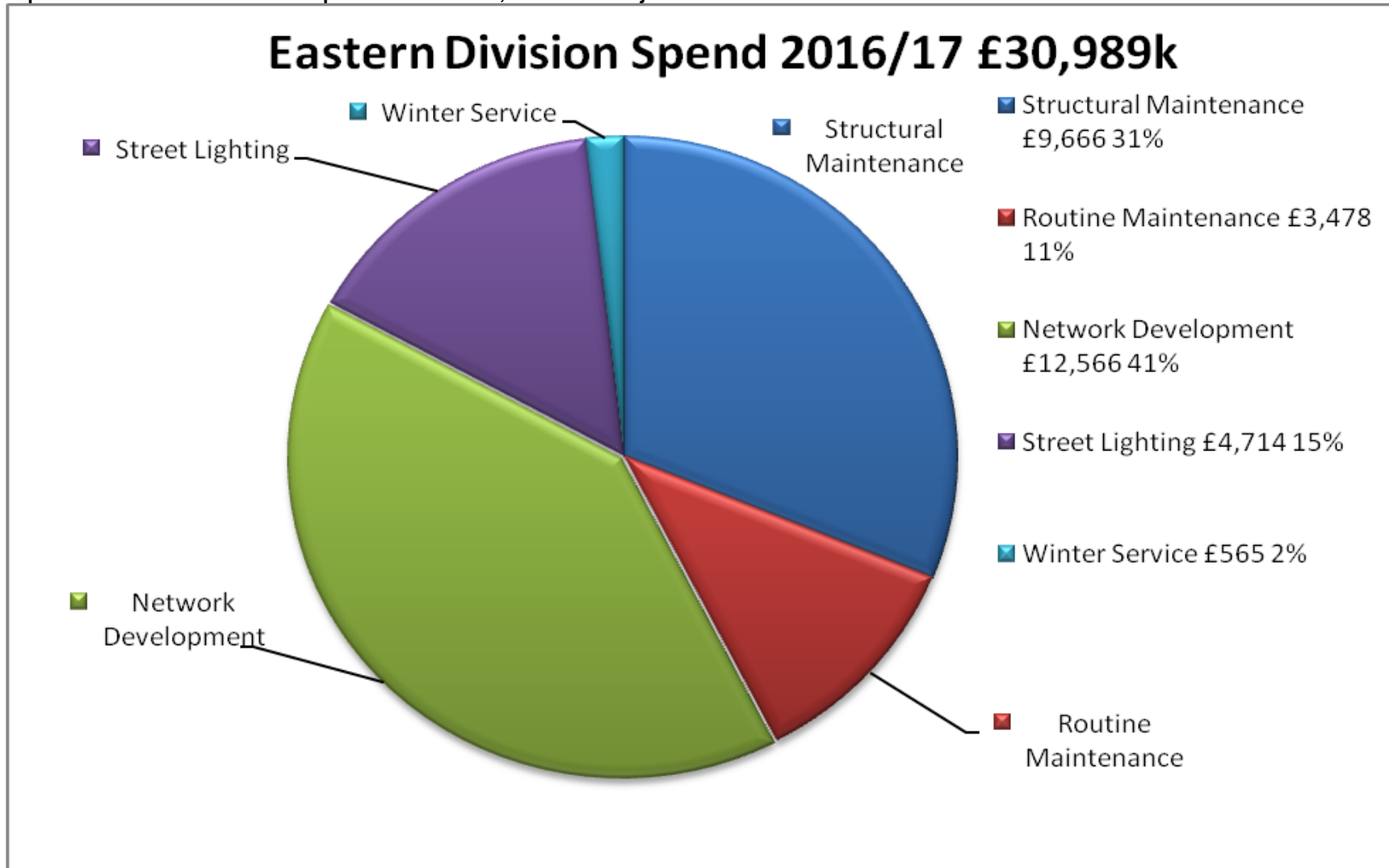
Minor works programme, maintenance and strengthening of structures, Forward Planning, Developing and progressing Strategic Highway Improvements within Eastern Division



Colin Sykes (9025 3111) colin.sykes@infrastructure-ni.gov.uk
Network Maintenance

Maintenance of adopted roads and footways including inspections, resurfacing, drainage, grass cutting and weed control, winter gritting and liaison with the utility companies.

NB: Figures provided are Eastern Division's provisional outturn, which are subject to Audit before finalisation.



Lisburn & Castlereagh City Council area – Key Statistics

Roads infrastructure	Eastern Division	Lisburn & Castlereagh City Council area
Length of public road (km)	2427	1335
Length of footway (km)	3082	931
Number of bridges	363	259
Number of street lights	69379	22047
Number of car parks	4	1
Number of car parking spaces	2106	35

WHAT WE DO

Maintaining the road network

Structural maintenance

Maintaining the network in a safe and serviceable condition remains one of our highest priorities.

Structural maintenance includes:

- The resurfacing and surface dressing of roads and footways
- The repair of surface defects, such as potholes and broken flagstones
- The replacement and repair of road gullies, culverts and manholes

Within the Eastern Division area in 2016/17 we:

- Invested £9.7 million on structural maintenance
- resurfaced 89.21 lane km of the road network
- resurfaced 12.98 km of footways

Condition of the network

Monitoring the condition of our road network is an essential part of planning maintenance work and, in order to detect deterioration at an early stage, we undertake a number of annual road condition surveys using specialist vehicles to measure the strength, surface condition and skidding resistance of our roads.

In 2016/17 71.2% of the motorway and 75.4% of trunk road network had a residual life of more than 5 years compared to a target of 70% respectively. The information from the survey gives us an indication of areas of the road network which require further investigation and are likely to require maintenance.

Routine maintenance

Routine maintenance is important, both to enhance user safety and to help prevent more significant and costly maintenance problems building up over time.

In Eastern Division during 2016/17 we:

- invested around £1.3 million replacing road markings, cutting grass verges to maintain visibility, emptying gullies and maintaining or replacing safety barriers, and maintaining street trees, verges and fences.
- repaired 44,239 road defects following inspections.

Managing the road

The Traffic Information and Control Centre (TICC) is located within Belfast City Council area and from this location DfI Roads manage:

- 330 sets of traffic signal controller junctions
- 600 sets of traffic signal controlled pedestrian crossings
- 45 motorway gantries
- 73 motorway Variable Message Signs
- Use approximately 160 CCTV cameras to monitor the road network in real time

We also disseminate real time travel information through the use of Social media

- with 30,715 followers on Twitter,
- in excess of 650,000 unique users on Trafficwatchni.com website in 2016 and
- approximately 3,000 users registered to receive emergency e-mail alerts.

We manage the road network to promote its safety and efficient operation. We have continued to make use of the latest technology and traffic management techniques to improve road safety, provide facilities for all road users, and effectively manage the network. This has included:

- Monitoring and management of traffic signal timings
- Responding to at least 92% of urgent traffic signal faults within 24 hours
- The use and extension of traffic control and monitoring systems
- The promotion and introduction of Puffin crossings
- The provision and management of motorway control systems
- The supply and management of road traffic signs
- The internal dissemination of collision records to help target areas of safety concern
- The provision of accurate and reliable traffic information to the public including replies to traffic count queries and the provision of the annual traffic count census report.

Within Eastern Division during 2016/17 we:

- Provided pre-trip information on the trafficwatchni website, www.trafficwatchni.com, via radio broadcasts and our traffic information telephone line 08457123321.
- Commenced the upgrade of traffic signals at 1 signalised junction. [DN: other parts of Eastern Division may have undertaken similar work as well as BRT].
- Completed the migration of the Urban Traffic Control Communications system (UTC) to a new operating platform to ensure its continued robustness and expandability.
- Completed the upgrade of 2 pedestrian crossings. [DN: again other parts of Eastern Division may have undertaken similar work as well as BRT].
- Commenced the migration of the CCTV control system to a new operating platform to ensure its continued robustness and expandability.

Winter Service

The aim of winter service is to help, as far as possible, main road traffic to move safely and freely in wintry conditions by spreading salt at the most effective times.

Eastern Division, has a fleet of 22 gritters and over 100 personnel available to salt approximately, 1,306km of main roads.

There were 45 call-outs this year, using around 7,258 tonnes of salt, at a cost of approximately £13k per call-out to treat all roads on the salting schedule. Eastern Division completed 96% of winter salting actions within 4 hours, exceeding the target.

Our total winter service expenditure was £0.56 million.

Emergency Response Service

We have procedures in place to assist with roads related emergency incidents to ensure a response, 24 hours a day, 7 days a week.

Our emergency response procedures are supported by a well established reporting system to gather operational information from across Northern Ireland during an emergency. A lead communicator is available out of hours all year round to ensure that the latest news on road conditions is available to the travelling public and we have enhanced the trafficwatch website to enable the lead communicator to keep this information updated including Social Media System and Twitter.

Development Control and Private Streets

Development Control staff act as consultee to Planning Service, providing advice on road safety, traffic progression, transportation, roads layout/standards and policy compliance. During the 2016/17 financial year, Eastern Division dealt with over 2,800 planning application consultations and processed an average of 70% of these within 15 working days. In relation to new housing developments, 19km of Private Streets have been determined in 2016/17. This means that if and when the streets are built to the agreed layout and standard, they will be adopted into the public roads network. 64 new development sites have started since April 2016 representing approximately 5km of new roads and footways. At 31 March 2017 we held £23.8M in bonds, and during 2016/17, £2.6M of new bonds were processed with £2.3M released on adoption.

Street Works

Our road network is a major public asset valued at over £32 billion. It accommodates a network of underground pipes and cables which deliver key services to the public including water supply, waste water disposal, electricity, gas and telecommunications.

Utility companies have the right to open the public road to place or maintain their equipment. In 2016/17 there were 47,058 utility company road openings across Northern Ireland, with some 14,652 in Eastern Division. We work closely with utility companies to minimise disruption caused by street works and ensure better quality reinstatements.

Our Inspectors in Eastern Division have carried out over 3,991 visits to street works sites to inspect work in progress and completed reinstatements

Improving the Road Network

Major Road Improvements

Network Development Section progress the development of major road improvement schemes in the Strategic Road Improvement Programme. Delivery of these schemes is dependent on funding levels envisaged through the Investment Strategy for Northern Ireland 2011-21 and future budget settlements.

In Eastern Division there are three major road improvement schemes currently at development stage. These are the York Street Interchange, the A55 Knock Road and the A2 Sydenham Bypass.

- York Street Interchange - on the 15 November 2016, Chris Hazzard MLA, the former DfI Minister, announced the publication of the outcome of the Public Inquiry into this scheme. This included the publication of the Public Inquiry Inspector's Report and the Departmental Statement.
- The procurement process for the York Street Interchange has been progressed in parallel with the statutory process. The tender process to appoint a Contractor to bring the scheme to a construction ready stage has now been completed. However, tender award cannot occur due to a legal challenge. The legal process is ongoing.
- Following a Ministerial direction, the process of consulting local residents and key stakeholders on issues identified in the Inspector's Report has now commenced.
- A55 Knock Road – in September 2012 DfI Roads published a Departmental Statement, the Notice of Intention to Proceed and the Direction Order following the completion of public inquiry process. While there is currently no funding for this scheme, work can be progressed should additional funds become available.
- A2 Sydenham Bypass – the preferred option for the scheme was published in February 2010. While there is currently no funding for this scheme, work can be progressed should additional funds become available.

The commencement of construction for the York Street Interchange, the A55 Knock Road and the A2 Sydenham Bypass will depend on the satisfactory completion of an economic assessment, completion of the statutory process and subject to funding being made available by the Executive in future budget settlements.

Bridge Strengthening

DfI Roads regularly inspects its stock of bridges and other structures on the public road network.

Last year across Eastern Division we inspected 134 structures and carried out maintenance and repair work to 21 structures. In 2016/17 we spent a total of £240k on strengthening and maintaining our current stock of bridges, culverts and retaining walls.

Local Transport and Safety Measures

In 2016/17 we spent over £3.1 million on a range of measures to improve the safety and efficiency of the road network. In Eastern Division this included implementation of:

- 24 Minor Works improvement schemes;
- 2 Collision Remedial measures at specific sites;
- 3 Traffic Calming measures;

- 0.7 kms of new cycle facilities;
- 12 Controlled Pedestrian Crossings;
- Improvements to the trafficwatch website and the motorway control system as well as continuously ongoing work to improve the performance of our traffic signals and pedestrian controlled crossings.

Street Lighting

We provide and maintain street lighting on all adopted roads in urban areas and in certain circumstances, on rural roads.

In 2016/17 we spent £2.07 million installing new and maintaining existing lighting systems in Eastern Division. This excludes the energy costs which were £2.65 million.

Budget constraints have meant that the Department has faced periods of significant street lighting resource pressures over the last two years. While budget pressures still exist this year, our initial allocation for street lighting maintenance allows us to continue using our external contractors to carry out street lighting repairs at this time. However, the continuation of this service for the full year will depend on the outcome of monitoring rounds.

Belfast Rapid Transit (BRT)

The Department is currently implementing the infrastructure necessary for the new Belfast Rapid Transit (BRT) system.

The BRT infrastructure works have been divided into 12 individual schemes and in 2016/17 the Department spent some £8.1M on minor carriageway widening to accommodate the new bus lanes, relocation of services, improvements to signalised junctions and pedestrian crossing facilities, upgrading street lighting to LED, and resurfacing of carriageways and adjoining footways. The legislation to provide additional bus lanes has also been progressed in conjunction with these works. The BRT system is on target to become operational in September 2018.

Customer Service

DfI Roads aims to inform, consult and involve customers by:-

- supplying up-to-date information through our publications, at shows and exhibitions and via our website <http://www.drdni.gov.uk> and;
- listening to customer needs; and
- remaining open, transparent and visible at all times.

We publish a wide range of information leaflets on specific road schemes and on the services we provide. Our free newspaper, "On the Move", is published twice a year and distributed through our local offices and public libraries.

We provide up-to-date travel news through our travel information website www.trafficwatchni.com and our traffic hotline for Greater Belfast on 08457 123321. Traffic information is updated at 10 minute intervals and broadcast on BBC Radio Ulster during peak times.

During the development phase of major roads projects, we consult with a wide range of stakeholders, including elected representatives and the public and, particularly, those likely to be directly affected by the

works. We hold exhibitions at local venues and inform the public through press articles, leaflet drops and individual visits, as necessary.

During 2016/17 we received 4846 written enquiries from the general public and responded to 92% of these within 15 days.

2.0 NETWORK DEVELOPMENT/STRATEGIC ROAD IMPROVEMENT

Principal Engineer – Stephen Pollock (9025 3071) stephen.pollock@infrastructure-ni.gov.uk

He is supported by the following staff:


Works and Structures - David Grills (9025 3153)
david.grills@infrastructure-ni.gov.uk

This team is responsible for major works, minor works and Structures.



Strategic Road Improvement 2 – Basil Hassard (9025 3272)
basil.hassard@infrastructure-ni.gov.uk

Basil is responsible for development of the A2 Shore Road dual carriageway scheme, the M1 / A1 Link at Sprucefield and the Sydenham By-pass scheme. Basil is supported by Ian Kernaghan (ext 53073).







Strategic Road Improvement 1 – Colin Pentland (ext 53212)
colin.pentland@infrastructure-ni.gov.uk

Colin is responsible for progressing development of the York Street Scheme and the A55 Knock Road widening.



2.1 MINOR WORKS

2016 /17 Works Completed

Scheme		Status
<p>A24 Carryduff Road at Temple Crossroads, Lisburn.</p> <p>Provision of a new 4 arm roundabout on the A24 Carryduff Road and realignment of existing approaches from the B6 Saintfield Road with the provision of a new 34 space Park and Share facility.</p> <p>Scheme commenced July 2016 with work substantially completed January 2017.</p>		Completed
		
<p>A49 Old Ballynahinch Road, Lisburn.</p> <p>Removal of existing masonry retaining wall and replacement with side slope and 2m verge.</p> <p>Scheme commenced 30 January with work substantially completed 17 February 2017.</p>		Completed*
		

<p>B23 Hillhall Road / Glen Road – Phase 2</p> <p>Carriageway widening and realignment to improve sightlines and forward visibility at bend between Nos 214 and 218 Hillhall Road.</p> <p>Scheme commenced on site 15 February 2016 with work completed 12 September 2016.</p>	Completed
<p>Prince William Road, Lisburn. Footpath Link</p> <p>Provision of pedestrian footpath with street lighting to link existing footways at Prince William Road and Drumard Crescent.</p> <p>Scheme commenced August 2016 with work completed September 2016.</p>	Completed*
<p>Bottier Road, Moira – Footway Link.</p> <p>The provision of a new 2 metre wide footway along the front of St Colmans Church to link the existing footway at the front of the houses on Bottier Road with planned community facilities.</p> <p>Scheme commenced January 2016 with work substantially completed April 2016.</p>	Completed

* Additional to programme.

MINOR WORKS

2017 /18 Programme of Works

Scheme	Status
<p>LISBURN & CASTLEREAGH.</p> <p>No Minor Works schemes are currently programmed for Lisburn and Castereagh.</p>	

2.2 MAINTENANCE OF STRUCTURES

2016/17 Works Completed

Scheme	Status
PRINCIPAL INSPECTIONS OF BRIDGES AND CULVERTS	
Bridge No. 20277 – Harpers Bridge	Completed
Bridge No. 20280 – Manse Road	Completed
Bridge No. 20287 – Three Town Bridge	Completed
Bridge No. 20288 – Gransha Road	Completed
Bridge No. 20289 – Lisleen Bridge	Completed

Scheme	Status
Bridge No. 20305 – Mill Road West, Ballycoan	Completed
Bridge No. 20306 – Mill Road West, Purdysburn	Completed
Bridge No. 20307 – Charity Bridge	Completed
Bridge No. 20313 – Holygate Avenue Footbridge	Completed
Bridge No. 20314 – Cairnshill Subway	Completed
Bridge No. 26876 – Saintfield Road(Opposite Ivanhoe) – Cantilever Signs	Completed
Bridge No. 90221 – Drum Bridge	Completed
Bridge No. 90026 – Ballykine Road	Completed
Bridge No. 90230 – Youngs Bridge	Completed
Bridge No. 90238 – Queens Bridge(Subway)	Completed
Bridge No. 90249 – Hilden Bridge	Completed
Bridge No. 90261 – Old Hillsborough Road(Footbridge)	Completed
Bridge No. 90306 – Leap Bridge	Completed
Bridge No. 90436 – Maze Bridge	Completed
Bridge No. 90461 – Mullaghcarron Bridge	Completed
Bridge No. 90437 – The New Bridge	Completed
Bridge No. 90451 – Disused Railway Arch	Completed
Bridge No. 90463 – Dunygarton Road	Completed
Bridge No. 90467 – White Lane	Completed
Bridge No. 90522 – Old Ballynahinch Road, Cargycreevy	Completed
Bridge No. 90646 – Upper Dunmurry Lane	Completed
Bridge No. 90657 – Springmount Road	Completed
REMEDIAL WORK ON CONCRETE AND STEEL STRUCTURES	
Bridge No. 20270 – Glenavy road – Wingwall and Parapet Repairs	Completed
Bridge No. 20273 - Newtownbreda Footbridge – Concrete Repairs due to RTC	Completed
Bridge No. 90300 – Glenavy Footbridge – Bottom chord repairs due to RTC	Completed

Scheme	Status
REMEDIAL WORK ON MASONRY STRUCTURES	
Bridge No. 20322 – Ballyknockan Road/Monlough Road – Culvert Replacement	Completed
Bridge No. 20393 – Queensway, Dunmurry – Replacement of Existing Parapets, partially due to RTC.	Completed
Bridge No. 90245 – Ballyskeagh – Tie Bars and Sandstone Repairs	Completed
Bridge No. 90254 – Lambeg Canal Bridge, Tullynacross – Repairs to Damaged Parapet.	Completed
Bridge No. 90278 – Potters Bridge – Parapet Repairs	Completed
Bridge No. 90446 – A26 Upper Ballinderry Road – Parapet Repairs and Strengthening.	Completed
Bridge No. 90493 – Knockcairn Bridge, Tullyrusk Road – Masonry Repairs and Tie Bars	Completed
Bridge No. 90521 – Old Ballynahinch Road, Bailliesmill Bridge – Repairs to Damaged Parapet	Completed
Bridge No 90590 – Arnolds Bridge – Parapet Upgarde	Completed*
Tullyard Road, Drumbo – Culvert Replacement	Completed
Vegetation Removal – Various Sites	Completed
Bridge No. 20310 – Mealough Road – New Parapets	Removed from Programme**

** Removed from programme due to proposed new development.

*Additional to programme

MAINTENANCE OF STRUCTURES

2017/18 Programme of Works

Scheme	Status
PRINCIPAL INSPECTIONS OF BRIDGES AND CULVERTS	
Bridge No. 20274 – Hospital Road	Programmed
Bridge No. 90042 - Moira Road	Programmed
Bridge No. 90139 – Leapogues Road	Programmed
Bridge No. 90140 – Ballynahinch Road	Programmed
Bridge No. 90150 – Cargycray Road	Programmed
Bridge No. 90219 – Carr Road Bridge	Programmed
Bridge No. 90234 – Moore's Bridge	Programmed

Scheme	Status
Bridge No. 90237 – Union Bridge	Programmed
Bridge No. 90266 – Crooked Bridge	Programmed
Bridge No. 90273 - Sophias Bridge	Programmed
Bridge No. 90277 – Lough Road	Programmed
Bridge No. 90280 – Huntshill Road	Programmed
Bridge No. 90285 – Stoneyford Road	Programmed
Bridge No. 90292 – Ballymitpave Road	Programmed
Bridge No. 90296 – Glenavy Bridge	Programmed
Bridge No. 90300 – Glenavy Footbridge	Programmed
Bridge No. 90302 – Tullynewbank Road	Programmed
Bridge No. 90303 – Crewe Hill	Programmed
Bridge No. 90305 – Chapel Road	Programmed
Bridge No. 90308 – Glen Road	Programmed
Bridge No. 90309 – Furze Road	Programmed
Bridge No. 90314 – Black Bridge	Programmed
Bridge No. 90397 – Upper Dunmurry Lane	Programmed
Bridge No. 90414 – Knockmore Road	Programmed
Bridge No. 90447 – McPhersons Bridge	Programmed
Bridge No. 90452 – Meeting House Road	Programmed
Bridge No. 90453 – Ballinderry Road	Programmed
Bridge No. 90455 – Millvale Road	Programmed
Bridge No. 90464 – Knocknarea Road	Programmed
Bridge No. 90484 – Spencers Bridge	Programmed
Bridge No. 90488 – Lough Road	Programmed
Bridge No. 90490 – Aghalee Bridge	Programmed
Bridge No. 90515 – The Metal Bridge	Programmed

Scheme	Status
Bridge No. 90584 – Crooked Bridge	Programmed
Bridge No. 90599 – Ivy Hill	Programmed
REMEDIAL WORK ON CONCRETE AND STEEL STRUCTURES	
Bridge No. 20283 – Kings Road Subway – Drainage works to structure	Programmed
Bridge No. 20395 – Kingsway, Dunmurry – Repairs to Plinth Abutment	Programmed
REMEDIAL WORK ON MASONRY STRUCTURES	
Legacurry Culvert - New Parapet	Programmed

2.3 M1/A1 LINK AT SPRUCEFIELD

The Regional Development Strategy (RDS) identifies the M1 and A1 as one of the five key transport corridors, by forming part of the Eastern Seaboard Corridor, running from Larne to Belfast and on to Dublin. The Belfast Metropolitan Transport Plan (BMTP) also recognises the strategic significance of this route and the existing congestion problems on the M1 and at the M1/A1 junction.



The proposed scheme, which is included in the Strategic Road Improvement Programme, will provide a high standard link between the M1 motorway and the A1. It will be of major benefit to the strategic traffic in reducing journey times by avoiding delays in the Sprucefield area. It is intended that the proposal will also consider congestion at the roundabout junction on the A1 at Hillsborough.

DfI roads commissioned consultants to consider a range of options and an evaluation of all of the viable options for capacity enhancement along this route. This first stage of this has been completed and the findings published in a Stage 1 Report, which determined route corridors within which further options will be examined.

Due to current budget priorities there is insufficient funding to allow development work on this scheme. Progression of the scheme will be subject to the availability of future funding.

2.4 M1 CITY BOUND HARD SHOULDER BUS LANE

During the last year DfI Roads developed a proposal to extend the existing M1 city bound hard shoulder busway between Ballyskeagh and Black's Road. This was to be extended back to Junction 8 at Blaris for the Sprucefield Park & Ride site.

A procurement process was completed in January 2017, although the tendered costs were significantly higher than expected and as a result the contract was not awarded. Currently a review of the procurement strategy and any alternative delivery of the scheme is underway, to determine if it can be procured in a more cost effective way, or with reduced requirements.

2.5 A1 JUNCTIONS PHASE 2

This proposal, which is estimated to cost in the range £40-£50million, involves the construction of four grade separated junctions to facilitate the closing up of all openings in the central median and installation of a continuous central safety barrier between Hillsborough Roundabout and Loughbrickland improving road safety for all road users on the A1.

In addition, the proposal includes the provision of a northbound on-slip at Castlewellan Road at Banbridge a link between the existing underpass junction at Hillsborough Road, Dromore and Milebush Road and the closing of some minor road junctions along this section of the A1.

DfI Roads officials met with directly impacted landowners in September/October 2015 prior to a leaflet drop confirming the Preferred Option to all properties along the affected stretch of the A1. The preferred junction option at each junction location is as follows;

- Listullycurran Road – Blue Option
- Gowdystown Road – Green Option
- Skeltons Road/Drumneath Road – Purple Option
- Waringsford Road – Brown Option

The current phase of this work involves the completion of the design and preparing an Environmental Statement in preparation for taking the proposal through the statutory procedures, which will likely include a Public Inquiry.

A strategy is being developed to implement incremental improvements in advance of the full proposal. This involves erecting sections of central median safety barrier and where possible, closing up existing median gaps which facilitate right turn manoeuvres.

The first such improvement involved the closure of the central median at Hillsborough to prevent the right turn movement for southbound traffic into Moira Road and the erection of a central safety barrier in the locality. These works were completed on site on 12 March 2017.

Progression to construction for the full A1 Junctions Phase 2 proposal remains subject to it clearing the statutory procedures, having a satisfactory economic appraisal and, given other competing priorities, is dependent on funding being made available in future budget settlements.

3.0 NETWORK TRAFFIC AND STREET LIGHTING

Principal Engineer – Philip Robinson (9053080) philip.robinson@infrastructure-ni.gov.uk

He is supported by the following staff:

Traffic Management 1 - Paul King (9025 3029)

paul.king@infrastructure-ni.gov.uk



This team deals with traffic improvement schemes in Belfast.

Traffic Management 2 - Graeme Salmon (9025 3026)

graeme.salmon@infrastructure-ni.gov.uk



This team deals with traffic improvement schemes in Lisburn and Castlereagh and collision remedial schemes in all council areas.

Traffic Management 3 – Stephen McMeekin (90259813)

stephen.mcmeekin@infrastructure-ni.gov.uk



This team is responsible for residents' parking, development of car parking, cycle measures and traffic calming.

Street Lighting - Evans Gibson (9025 3058)

evans.gibson@infrastructure-ni.gov.uk



This team is responsible for Street Lighting and the illumination of signs.

Transportation - Harry Armstrong (9025 3022)

harry.armstrong@infrastructure-ni.gov.uk



This team is responsible for delivery of BRT Infrastructure, the Quality Bus Corridor (QBC) programme, other bus priority measures and Park and Ride.

3.1 COLLISION REMEDIAL**2016/17 Works Completed**

<i>Scheme</i>	<i>Status</i>
Upper Braniel Road Junction with Middle Road – High Friction Surface and Enhanced Signing	Completed
Sales Corner – High Friction Surface and Enhanced Signing	Completed
38 Dromara Road, Hillsborough – High Friction Surfacing and Enhanced Signing	Completed

COLLISION REMEDIAL**2017/18 Programme of Works**

<i>Scheme</i>	<i>Status</i>
Moira Roundabout – Extension of high friction surfacing and additional signing	Programmed

3.2 PEDESTRIAN MEASURES**2016/17 Works Completed**

<i>Scheme</i>	<i>Status</i>
A3 Moira Road Junction with Knockmore Road – Upgrade of Existing Traffic Signals and Crossing Facilities Including Additional Pedestrian Phase and Addition of Filter Arrow In Association with Resurfacing	Completed

PEDESTRIAN MEASURES**2017/18 Programme of Works**

<i>Scheme</i>	<i>Status</i>
Derriaghy Road at Linen Green – Provision of Controlled Crossing facility (C/F from 16/17)	Design Stage

3.3 TRAFFIC SIGNS AND INFORMATION 2016/17 Works Completed

<i>Scheme</i>	<i>Status</i>
Longstone Street – ‘Get In Lane’ Destination Sign	Completed
Brooklands Primary School – Erection Of Advisory One-Way Signs	Completed
McKeown Street – ‘Turning area – 150 yds’ information sign	Completed

Scheme	Status
Ballymaglaff Road – 12no. marker posts	Completed
Quarterland Road/ Sycamore Road – new warning signs	Completed
A26 Moira Road, Glenavy – Advance direction sign for Glenavy	Completed*
B101 Pond Park Road – Pond Park Primary School direction signs	Completed*
A23 Ballygowan Road – Additional warning signage	Completed*
B178 Hillsborough Road – ‘Series of bends’ warning signs	Completed*
C297 Ballynahinch Road – 50mph speed limit signs	Completed*
A23 Ballygowan Road – Ballygowan/ Roselawn cemetery confirmation sign	Completed*
Thievpal Road & Prince William Road – Addition of A&E info. to existing direction signs	Completed*
Cairnshill Primary School – Erection of advisory one-way signs	Completed*
Stoneyford Road, Stoneyford – Erection of ‘Children playing’ warning signs	Completed*
Priory Close – ‘Elderly Pedestrians’ warning sign	Completed*
Glebe Road, Annahilt – New marker posts	Completed*
Legacurry Road – ‘Road narrows’/ Chevron warning signs, and marker posts	Completed*
Knockbracken Reformed Presbyterian Church – new direction signs	Completed*
Divis Road, Belfast – Chevron warning signs	Completed*

*Additional to programme

TRAFFIC SIGNS AND INFORMATION 2017/18 Programme of Works

Scheme	Status
A49 Saintfield Road/ Lough Road – ‘Junction ahead’ warning signs	Programmed
Ballynahinch Road, Annahilt – New ‘Bend left/ right’ warning signs	Programmed
Tornagrough Road/ Wheelers Road – New yellow-border chevron signs	Programmed

3.4 DROPPED KERBS/MOBILITY RAMPS 2016/17 Works Completed

<i>Scheme</i>	<i>Status</i>
Carnshill Park Junctions with Cairnshill Drive and Cairnshill Gardens - Dropped Kerbs and Tactiles	Completed
Hillsborough Old Road at Meadowview Dropped Kerbs and Tactiles	Completed
Millars Lane, Dundonald – Dropped Kerb	Completed
Cairnshill Road/Upper Malvern Area – Various Locations (C/F from 2016/17)	Completed
Tonagh Area, Lisburn – Various Locations (C/F from 2016/2017)	Completed
Main Street, Moira – Various Locations (C/F from 2016/2017)	Completed

DROPPED KERBS/MOBILITY RAMPS 2017/18 Programme of Works

<i>Scheme</i>	<i>Status</i>
Governor's Road/Lisburn Omniplex Entrance Road (C/F From 2016/17)	In Progress
Richmond Avenue/Adlon Gardens, Lisburn – dropped kerbs	Completed

3.5 CARRIAGEWAY MARKINGS 2016/17 Works Completed

<i>Scheme</i>	<i>Status</i>
Upper Braniel Road - Hatching and 'Slow' Markings	Completed
Seymour Street – 'School' Markings	Completed
Edenticullo Road/Clogher Road – Edge of Carriageway Marking (C/F from 2016/17)	Completed
Glebe Road, Annahilt – New edge of carriageway road markings	Completed*
Ballyskeagh Road - New edge of carriageway road markings	Completed*
Laganbank Road/ Hill Street – Yellow box marking	Completed*
Hill Street (At Public Car Park) – Additional arrow markings	Completed*
A1 Belfast Road – Additional arrow markings	Completed*
Seymour Street/ Queens Road – additional lane markings	Completed*

*Additional to programme

CARRIAGEWAY MARKINGS

2017/18 Programme of Works

<i>Scheme</i>	<i>Status</i>
Ballynahinch Road, Annahilt – New edge of carriageway and 'Slow' road markings	Programmed
Divis Road, Belfast – 'Slow' road markings	Programmed
Tornagrough Road/ Wheelers Road – Hatched road marking	Programmed

3.6 LEGISLATION

2016/17 Works Completed

<i>Scheme</i>	<i>Status</i>
SPEED LIMITS	
Ravernet Road – 50mph Speed Limit (C/F from 2015/2016)	Completed
C297 Ballynahinch Road – 50mph speed limit (C/F from 2015/16)	Completed
WAITING RESTRICTIONS	
Station Road, Lambeg – Working day restriction (C/F from 2015/16)	Completed

LEGISLATION

2017/18 Programme of Works

<i>Scheme</i>	<i>Status</i>
SPEED LIMITS	
WAITING RESTRICTIONS	
Forthill, Lisburn – Extension of Double Yellow Lines	Objections Received
Clonevin Park, Lisburn – Extension of Double Yellow Lines	In Progress
Market Square South – Single Yellow Line	In Progress
Cairnshill Drive – Double Yellow Line and School Keep Clear	In Progress
WEIGHT RESTRICTIONS	
Hillsborough Weight Limit – 7.5T Restriction (C/F from 2016/2017)	Objections Received

Scheme	Status
TRAFFIC ORDERS	
Upper Newtownards Road (Knock Road to Dunlady Road) – Bus lanes associated with BRT	In Progress

3.7 DISABLED PARKING BAYS (DPB) 2016/17 Works Completed

Scheme	Status
Tanners Court, Moira	Completed

DISABLED PARKING BAYS 2017/18 Programme of Works

Scheme	Status
Applications for Disabled Parking Bays (DPB) have been assessed on an individual basis, as they are received.	Ongoing

3.8 SAFER ROUTES TO SCHOOL 2016/17 Works Completed

Scheme	Status
Millenium Primary School A7 Belfast Road – Replacement Sign	Completed
St Aloysius Primary School Ballinderry Road – additional SRTS sign	Completed

SAFER ROUTES TO SCHOOL 2017/18 Programme of Works

Scheme	Status
Sites will be identified depending on available finance	

3.9 TRAFFIC SCHEMES 2016/17 Works Completed

Scheme	Status
---------------	---------------

Scheme	Status
A23 Ballygowan Road – Enhanced Signage, Red Patches and Edge Of Carriageway Markings	Completed
Upper Braniel Road at Hillmount Nursery – High Friction Surface on Bend	Completed
B178 Comber Road, Carryduff – Enhanced Signage and Road Markings	Completed

TRAFFIC SCHEMES

2017/18 Programme of Works

Scheme	Status
Programme to be finalised pending funding	

3.10 TRAFFIC CALMING

2016/17 Works Completed

Scheme	Status
Lambeg – Gateway Treatment	Completed
Carryduff – Gateway Treatment	Ongoing

TRAFFIC CALMING

2017/18 Programme of Works

Scheme	Status
Woodland Park Area, Lisburn (Woodland Park, Ashgrove Park, Beechland Drive)	Programmed

3.11 CYCLE MEASURES

2016/17 Works Completed

Scheme	Status
Graham Gardens contra flow cycle lane	Not taken forward

CYCLE MEASURES**2017/18 Programme of Works**

<i>Scheme</i>	<i>Status</i>
No programmed schemes	

3.12 CAR PARKING**2016/17 Works Completed**

<i>Scheme</i>	<i>Status</i>
Review of on-street charged parking in Lisburn City Centre	Ongoing
Formally consult and carry out the legislative process with the aim of introducing additional loading facilities in Castle Street	Put on hold

CAR PARKING**2017/18 Programme of Works**

<i>Scheme</i>	<i>Status</i>
Review of on-street charged parking in Lisburn City Centre	Ongoing

3.13 STREET LIGHTING**2016/17 Works Completed**

<i>Scheme</i>	<i>Status</i>
Wallace Avenue/Sackville Street/Conway Street, Lisburn	Completed
Ward Avenue/Windsor Avenue/Jubilee Avenue/Jubilee Place, Lisburn	Completed
Backwood Road/Castlevue Park/Castlevue Gardens, Moira	Completed
Ballynahinch Road (from Carryduff Roundabout to Hillsborough Road)	Completed
Hollygate Park/Avenue, Castlereagh	Completed
Church Avenue, Castlereagh	Completed
Park Avenue, Castlereagh	Completed
East Link Road, Castlereagh	Completed
Galway Park, Castlereagh	Completed
Reaville Park, Castlereagh	Completed

STREET LIGHTING**2017/18 Programme of Works**

<i>Scheme</i>	<i>Status</i>
Prince William Road Phase 2, Lisburn	Programmed
Longstone Street and Chapel Hill inc Roundabout, Lisburn	Programmed
Antrim Road/Westbourne/ Benson Street/Sans Souci Gardens/Antrim Road Roundabout, Lisburn	Programmed
Ardmore Avenue, Castlereagh	Programmed
Cairnsmore Avenue, Castlereagh	Programmed
Rossneath Gardens, Castlereagh	Ongoing
Newtown Park, Castlereagh	Programmed
Lower Braniel Road, Castlereagh	Programmed
Kings Road, Castlereagh. Retrofit LED's	Programmed
Comber Road, Castlereagh. Retrofit LED's	Programmed
Saintfield Road, Castlereagh. Retrofit LED's	Programmed

3.14 TRANSPORTATION MEASURES 2016/17 Works Completed

<i>Scheme</i>	<i>Status</i>
Dundonald Park and Ride – Provision of concrete base for the installation of a Rivers Agency emergency community sand-bag store.	Completed

TRANSPORTATION MEASURES 2017/18 Programme of Works

<i>Scheme</i>	<i>Status</i>
Sprucefield Park and Ride – Provision of a new 650 space Park and Ride facility and Terminal Building.	Awaiting outcome of the Public Inquiry
Lay-by opposite 20 Lisburn Road, Moira. Relocation of bus stop and provision of kerb-side hard stand.	Programmed
Additional hard stands shall be constructed at bus stops where a need is identified and resources are available.	Ongoing
BELFAST RAPID TRANSIT	

<i>Scheme</i>	<i>Status</i>
Upper Newtownards Road (Knock Road to Dunlady Road). Carriageway widening, resurfacing and improvements to drainage and pedestrian crossing facilities.	Design in progress. Programmed start Spring 2017.

4.0 NETWORK TRANSPORT TELEMATICS

Principal Engineer – Roy Gordon (9025 4500) roy.gordon@infrastructure-ni.gov.uk

He is supported by the following staff:

Declan Murphy (90 254536) declan.murphy@infrastructure-ni.gov.uk

This team is responsible for the day to day running of the Traffic Information and Control Centre. It is responsible for the installation, maintenance and operation of Intelligent Transport Systems (ITS) including traffic control on the urban and motorway networks and the provision of traffic and travel information.



Vacant:

This team has specific responsibilities for issues of Road Safety including the internal dissemination of collision records, supply of signs, the Road Safety Engineering Report, traffic counting including the publication of the Annual Traffic and Travel Information (Census) Report.

This unit will continue to have a strategic overview of road safety and the analysis of collision data on roads across the Province.



TICC's TrafficwatchNI website



M1 / A12 Westlink Managed Route

4.1 NETWORK TRANSPORT TELEMATICS

2016/17 Works Completed

Scheme	Status
TRAFFIC AND TRAVEL INFORMATION	
We will continue to enhance the Trafficwatchni website and improve our social media facilities as appropriate.	Ongoing
URBAN CLOSED CIRCUIT TELEVISION (CCTV) CAMERAS	
Review CCTV coverage to ensure its continued adequacy and identify camera locations that are in need of upgrade.	Ongoing
Identify new locations where the provision of cameras will enhance the coverage of the CCTV network, to improve traffic control capabilities.	Ongoing
Provide increased resilience and capacity enhancements to the CCTV control system by migrating hardware onto an IP platform.	Commenced
TRAFFIC CONTROL SYSTEMS	
Utilise TICC's communications and control infrastructure together with the CCTV network to ensure traffic flows are monitored and effectively managed on the urban and motorway networks.	Ongoing
We will monitor traffic signal timings to ensure they are appropriate for the prevailing traffic conditions and subject to adequate funding we will upgrade traffic signal equipment where necessary.	Ongoing
Replace the traffic signals and deploy MOVA, an advanced form of traffic signal control, at the junction of Queensway /Moss Road	Completed
Provide increased resilience to the traffic control system by migrating traffic signals to utilise more reliable IP (internet protocol) based communications	Completed
Subject to adequate funding the junction at Longstone Street / Thiepval Road has been identified for traffic signal equipment upgrade.	Programmed
TRAFFIC MANAGEMENT	
We will undertake an Options Study to alleviate queuing on the M1 Black's Road offslip	Completed
PEDESTRIAN MEASURES	

Scheme	Status
Subject to adequate funding the following locations have been identified for upgrade; <ul style="list-style-type: none"> • Thiepval Road at Benson Street – Pelican to Puffin upgrade • Bachelors Walk at Railway Street – Pelican to Puffin upgrade 	Programmed Programmed
CENTRAL ROAD SAFETY UNIT	
This unit will continue to have a strategic overview of road safety and the analysis of collision data on roads across the Province.	Ongoing

NETWORK TRANSPORT TELEMATICS

2017/18 Programme of Works

Scheme	Status
TRAFFIC AND TRAVEL INFORMATION	
We will continue to enhance the Trafficwatchni website and improve our social media facilities as appropriate.	Ongoing
URBAN CLOSED CIRCUIT TELEVISION (CCTV) CAMERAS	
Review CCTV coverage to ensure its continued adequacy and identify camera locations that are in need of upgrade.	Ongoing
Identify new locations where the provision of cameras will enhance the coverage of the CCTV network, to improve traffic control capabilities.	Ongoing
TRAFFIC CONTROL SYSTEMS	
Utilise TICC's communications and control infrastructure together with the CCTV network to ensure traffic flows are monitored and effectively managed on the urban and motorway networks.	Ongoing
We will monitor traffic signal timings to ensure they are appropriate for the prevailing traffic conditions.	Ongoing
Subject to adequate funding be made available we will upgrade traffic signal equipment as required.	Ongoing
PEDESTRIAN MEASURES	

Scheme	Status
Subject to adequate funding the following locations have been identified for upgrade: <ul style="list-style-type: none"> • Moira Rd @ Ballycreen Drive, Pelican to Puffin Upgrade • Moira Rd @ Drumlough Gardens, Pelican to Puffin Upgrade 	Programmed Programmed
CENTRAL ROAD SAFETY UNIT	
This unit will continue to have a strategic overview of road safety and the analysis of collision data on roads across the Province.	Ongoing

5.0 NETWORK MAINTENANCE

Principal Engineer – Colin Sykes (9025 3111) colin.sykes@infrastructure-ni.gov.uk

He is supported by the following staff:

Lisburn and Castlereagh Section Engineer - Eamonn McMahon (9262 6666)

eamonn.mcmahon@infrastructure-ni.gov.uk

40a Benson Street, Lisburn, BT28 2BG

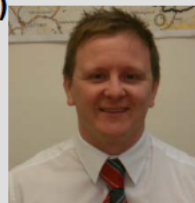
The Section Office is responsible for contacts with the public and elected representatives, highway inspections, resurfacing, responsive repairs, routine maintenance, winter gritting, road opening consents and licenses, public liability claims and street works co-ordination with the utility companies.



Deputy Section Engineer – David Williams (9262 6666)

david.williams@infrastructure-ni.gov.uk

40a Benson Street, Lisburn, BT28 2BG



Support Services Manager- Bill Fulton(90253364)

bill.fulton@infrastructure-ni.gov.uk

This team is based at Hydebank and is responsible for general co-ordination, bidding, allocating and monitoring finances, maintenance of safety fences, contract monitoring, statistics and enforcement.



5.1 CARRIAGEWAY RESURFACING 2016/17 Works Completed

Scheme	Status
From April 2016 to March 2017, 32.6km of carriageway has been resurfaced in the Lisburn/Castlereagh area. This equates to 210,000 sq.m and includes the schemes listed below.	
RESURFACING SCHEMES	
Causeway End Road	Completed
A7 Belfast Road Trunk Road Network	Completed
Brokerstown Road	Deferred to 2017/18
Kilwarlin Road	Completed
Laverys Bridge Road	Completed
Tansey Lane	Completed
A26 Moira Roundabout	Completed
Carnreagh	Completed
Lurgan Road Aghalee	Completed*
Culcavy Road	Completed*
Tornaroy Road	Completed*
Divis Road	Completed*
Budore Road	Completed*
Rawdon Place	Completed*
Sandringham Court	Completed*
Greengraves Road	Completed*
Manse Road	Completed*
Rowan Drive	Completed*
McCartney Place	Completed*
Moira Main Street	Completed*
Newton Park, Castlereagh	Completed*
C363 Moira Road (A1 to Kilwarlin Road	Completed*
Glenavy Road, Lisburn	Completed*
Lurganure Road	Completed

<i>Scheme</i>	<i>Status</i>
Mullaghglass Road	Completed
A3 Moira Road (Knockmore to Hull Lane)	Completed
Hillsborough Road	Completed
Warren Park	Completed*
Beechdene Drive	Completed*
Beechdene Park	Completed*
Beechdene Gardens	Completed*
Benson Street	Completed*
Killynure Road	Completed*
Grovehill Road	Completed*
Tullyard Road	Completed*
Dundrum Road	Completed*
Furze Road	Completed*
Brookmount Road	Completed*
Hammonds Road	Completed*
Glenside Road	Completed*
Old Ballynahinch Road	Completed*
Gortraney Road	Completed*
Dalboyne Park	Completed*
Dalboyne Gardens	Completed*
Drumlough Road	Completed*
Rathmore Ave	Completed*
COLD ASPHALT OVERLAY CARRIAGEWAYS	
Glenwood Court	Completed
Carnreagh Ave	Completed
Belvoir Crescent	2017/18*
Belvoir Park	2017/18*

<i>Scheme</i>	<i>Status</i>
Beechwood Manor	Completed*
Belmont Park	Completed*
Broadwater Park	Completed*
Burnbrae Ave	Completed*
Granville Drive	Completed*
Helens Drive	Completed*
Helens Park	Completed*
Ryans Court	Completed*
Willow Walk	Completed*

*additional to programme

CARRIAGEWAY RESURFACING 2017/18 Programme of Works

<i>Scheme</i>	<i>Status</i>
RESURFACING SCHEMES	
Dromara Road	Programmed
Ravernet Road	Programmed
Glebe Road	Programmed
Huntshill Road	Programmed
Glen Rd, Glenavy	Programmed
Limetree Ave	Programmed
Drumankelly Road	Programmed
Brokerstown Road	Programmed
Hulls Lane	Programmed

5.2 FOOTWAY RESURFACING

2016/17 Works Completed

Scheme	Status
From April 2016 to March 2017, 5.5 km of footway was resurfaced in the Lisburn/Castlereagh area. This includes the schemes listed below.	
RESURFACING SCHEMES	
Rathmore Park	Completed
Antrim Road	Completed
Benson Street	Completed
Beechdene Park	Completed
Beechdene Gardens	Completed
Beechdene Drive	Completed
Warren Park	Completed
Dalboyne Park	Completed
Dalboyne Gardens	Completed
Rosemary Drive	Completed
Rathmore Ave	Completed

*additional to programme

FOOTWAY RESURFACING

2017/18 Programme of Works

Scheme	Status
Sites will be identified depending on available finance	

5.3 SURFACE DRESSINGS

2016/17 Works Completed

Scheme	Status
Lower Slievenacloy Road	Completed
Bog Road	Completed
Scotstown Road	Completed

<i>Scheme</i>	<i>Status</i>
Tullynewbank Road	Completed
Crewe Hill	Completed
Crewe Park Road	Completed
Belshaws Road	Completed
Irwinstown Lane	Completed
Old Moira Road	Completed
Brackenhill Road	Completed
Yewtree Hill Road	Completed
Hillhead Road	Completed
Legatarriff Road	Completed
Ballypitmave Road	Completed
Moss Road	Completed
Ballymagarick Road	Completed
Mill Road	Completed
Mealough Road	Completed
Back Road Drumbo	Completed
Upper Mealough Road	Completed
Gardeners Road	Completed
Mullaghdrin East	Completed
Carricknaveagh Road	Completed
Pattersons Road	Completed
Ballyworphy Road	Completed
Bresagh Road	Completed
Cluntagh Road	Completed
Lakelands Road	Completed
Springmount Road	Completed
Begney Road	Completed

<i>Scheme</i>	<i>Status</i>
Croft Road	Completed
Balliesmills Road	Completed
Ballymullan Road	Completed

SURFACE DRESSINGS

2017/18 Programme of Works

<i>Scheme</i>	<i>Status</i>
Tullyrusk Road	Programmed
Rusheyhill Road	Programmed
Hungry House Lane	Programmed
Innisloughlin Road	Programmed
Whinney Hill Road	Programmed
Bottier Road	Programmed
Ivyhill Road	Programmed
Bog Road	Programmed
Old Park Road	Programmed
St Johns Road	Programmed
Tullyard Road	Programmed
Sheepwalk Road	Programmed
Glenavy Road	Programmed
Upper Braniel Road	Programmed
Ballyhanwood Road	Programmed
Gilnahirk Road	Programmed
Lisnabreeney Road	Programmed
Saintfield Road	Programmed
Ballynahinch Road B177	Programmed
Comber Road /Hillsborough Road B178	Programmed

5.4 DRAINAGE

2016/17 Works Completed

<i>Scheme</i>	<i>Status</i>
149 Longstone Street	Passed to PNG
Moss Road	Completed
21 Cairnshill Road	Completed
40 Ballykeel Road	Completed
42 Gransha Road	Completed
Bells Lane at Lambeg Road	Completed
Sheepwalk Road	Completed*
McKinstry Road	Completed*
McKinstry Road Roundabout	Completed*
41 Greengraves Road	Completed*
8 Muskett Court	Completed*
6 Hornbeam Road, Lisburn	Completed*
22 Newton Park	Completed*
Killynure Road	Completed*
6 Cliveden Crescent	Completed*
60 Gransha Road	Completed*
47 Harmony Hill	Completed*
49 Hillsborough Road, Moneyreagh	Completed*
Crewe Park Road	Completed*
20 Hannastown Road	Completed*
Divis Road	Completed*
Lurganville Road	Completed*
Dromore Road at house no 190	Part Complete*
171 Ballynahinch Road	Completed
49 Magheraconluce Road	Completed
21 Dunlady Road	Completed

<i>Scheme</i>	<i>Status</i>
15 Beechill Avenue	Completed
22 Drumard Drive	Completed*

*additional to programme

DRAINAGE

2017/18 Programme of Works

<i>Scheme</i>	<i>Status</i>
Smithfield Street	Programmed
64 Glenavy Road	Programmed
40-42 Glencreagh Road	Programmed
115 Drumough Road	Programmed
130 Saintfield Road	Programmed
8 Derriaghy Road	Programmed
Upper Newtownards Road – Robbs Rd to Church Road	Programmed

5.5 VERGE STRENGTHENING SCHEMES 2016/17 Works Completed

<i>Scheme</i>	<i>Status</i>
Causeway End Road	Completed*

*additional to programme

VERGE STRENGTHENING SCHEMES

2017/18 Programme of Works

<i>Scheme</i>	<i>Status</i>
Moira Road	Programmed
Ballynahinch Road, Dromara	Programmed
Church Road	Programmed

5.6 CARRAIGEWAY REFURBISHMENT 2016/17 Works Completed

Scheme	Status
Moss Road, Stoneyford	Completed*
Theipval Road	Completed*
Dundrum Road	Completed*
Furze Road	Completed*
Brookmount Road	Completed*
Hammonds Road	Completed*
Killynure Road	Completed*
Grovehill Road	Completed*
Tullyard Road	Completed*

*additional to programme

5.7 LIAISON WITH UTILITIES 2016/17 Works Completed

Scheme	Status
NORTHERN IRELAND WATER	
Water mains upgrade Queensway and Lambeg	Completed
Sewer upgrade Antrim Street	Partially Complete
Sewer upgrade Antrim Road	Partially Complete
PHOENIX GAS	
Moneybroom Road	Completed
Ballinderry Road	Completed
Cross Lane	Completed
Dagger Road	Completed
Gravelhill Road	Completed
Lurganure Road	Completed

Scheme	Status
Kesh Road	Completed
Trench Road	Completed
Moira Road	Completed
Dromore Road	Completed
Old Coach Road	Completed
Dromara Road	Completed
Drumlough Road	Completed
Magheraconluce Road	Completed
Cardygray Road	Completed
Hillsborough Gas Main	Completed
Annahilt Gas Main	Completed
FIRMUS GAS	
Service connections to customers	
VIRGIN MEDIA	
Installation of new network Lisburn Area	Completed
CABLE & WIRELESS	
Service connection to customers	Ongoing
POWER NI	
Mains cable lying Prince William Road, Bentrin Road	Completed

LIAISON WITH UTILITIES

2017/18 Programme of Works

Scheme	Status
NORTHERN IRELAND WATER	
Sewer upgrade Antrim Street	Programmed
Sewer upgrade Antrim Road	Programmed
Sewer cleaning Lisburn City Centre	Programmed

Scheme	Status
PHOENIX GAS	
Hillsborough Main Street / Lisburn Street	Completed
Hillsborough Ballynahinch Street	Completed
Service connections to customers	Programmed
VIRGIN MEDIA	
Lisburn City Centre	Programmed
Service connections to customers	Programmed
CABLE & WIRELESS	
Service connections to customers	Programmed
POWER NI	
Lisburn City Centre	Programmed
Service connections to customers	Programmed
BT	
Lisburn City Centre	Programmed
Service connections to customers	Programmed

6.0 NETWORK PLANNING

Principal Engineer – Lionel Walsh (90253060) lionel.walsh@infrastructure-ni.gov.uk

He is supported by the following staff:

Development Control Team 1 – Sid Stevenson (9025 3588)

sid.stevenson@infrastructure-ni.gov.uk

This team manages the review of Transport Assessments associated with planning applications, Strategic/Significant Planning Applications and Private Streets determinations, bonds and adoption certificates for the Division.



Development Control Team 2- Stephen Cash (9025 3151)

stephen.cash@infrastructure-ni.gov.uk

This team deals with development control for the Lisburn & Castlereagh Council area. Stephen also provides specialist advice on development control issues.



Development Control Team 3 – Geoff Lawther (9025 3154)

geoff.lawther@infrastructure-ni.gov.uk

This team deals with development control for Belfast Council area and Titanic Quarter. Geoff also provides specialist advice on development control issues in these areas.



Development Planning – Conleth Sloan (9025 3116)

conleth.sloan@infrastructure-ni.gov.uk

This team deals with development planning for Lisburn and Castlereagh, and Belfast Council areas. Conleth also provides transport advice to Local Transport Plans and Community Plans for the Division and the coordination of Eastern Division input to regeneration/public realm projects.



6.1 ADOPTIONS

Adoptions completed from last Spring report

Location	Length Adopted (M)
Annacloy Park	153.6 linear metres of traditional carriageway with associated footways and turning head, 115.2 linear metres of frontage footway and 6.93m ² of grass verge.
Belsize Road	120 Belsize Road: 51 linear metres rear of frontage footway.
Berkeley Hall	Berkeley Hall Square, Berkeley Hall Mews East and Berkeley Hall Lane: 310 linear metres of traditional carriageway with associated footways, turning head and 302m ² of communal parking.
Church Hill, Drumbeg	Fronting House No's 31 – 43: 6 Linear metres of traditional carriageway and associated footway, 63.5 linear metres of footway and 33m ² of grass sightline.
Clonmore Manor	10m of traditional carriageway with associated footways and 40m of shared surface.
Dundrod Court	195m ² – 4 additional communal parking areas fronting house no's 4,5,9 and streetlight no's 3 and 7.
Eaton Court (The Cutts Dunmurry)	45 m of traditional carriageway (including adjoining footways), 80m shared surface carriageway and 70m remote footpath.
Glenavy Gardens	House No 17 – end: 81.5 linear metres of traditional carriageway associated footway, 262.5m ² of communal parking including 80 linear metres of storm drainage system.
Green Park Lane	31 metres of footway and visibility splay at frontage, 115 metres of traditional carriageway and footway, 78 metres of shared surface carriageway including service strips and 78m ² of communal parking area.
Half Penny Gate Road	8m of traditional carriageway at frontage (bellmouth access) and 130m of frontage footway.
Hornbeam Walk	Rear of House no's 4-12: 58 linear metres of footway and 11.2m ² of carriageway.
Inishcarn Close	50 linear metres of traditional carriageway with associated footways, plus 170 linear metres of shared surface carriageway with 2 metre wide service strip and 4 linear metres of remote footpath.
Lady Wallace Road	Lady Wallace Road (Junction Prince William Road – No 25 Lady Wallace Road): 98m of traditional carriageway, associated footways and 90m ² of grass verge. Lady Wallace Brae (Junction Lady Wallace Road – No 9 Lady Wallace Brae): 41m of traditional carriageway and associated footways. Lady Wallace Road/Walk (Pond Park Road, Lisburn Stage 1): 65m block pave surfacing carriageway. Lady Wallace Forge (Pond Park, Lisburn): 85m of traditional bitmac road, 80m LHS new asphalt footway and 80m RHS grass verge. Lady Wallace Walk (Former Pond Park Road): 150m of shared surface. Lady Wallace Walk/Road (Pond Park Road, Lisburn): 65m block pave surfacing and 1 no. raised table in asphalt with red chips. Sir Richard Wallace Road: 30m of traditional carriageway (associated footways). Lady Wallace Road: 80m of traditional carriageway, 100m ² parking and 200m verge (service strip). Lady Wallace Way: 45m of traditional carriageway (associated footways).

Location	Length Adopted (M)
Legacurry Road	Fronting house No's 2A - 4B: 63 linear metres of footway.
Longstone Street	16 linear metres of footway (fronting Garvey Studios).
Lurganure Road	Fronting 26 Lurganure Road: 15 linear metres of traditional carriageway at bellmouth entrance and 46 linear metres of frontage footway.
Maple Crescent	12 linear metres of traditional carriageway, 45.6m ² of communal parking and 4 linear metres of footway (between house no's 1 and 3).
Mornington	Mornington Court, Mornington Gardens, Mornington Walk and Mornington Lane: 675 linear metres of traditional carriageway with associated footways and turning heads, 680m ² of Mews Court carriageway, 15m ² of grass verge and 394.4m ² of parking bays.
Newtownbreda Road	Carriageway widening to facilitate construction of lay -by & provision of footway, Total area 180sqm.
Penworth Green	135 linear metres of traditional carriageway with associated footways and turning head, 195 linear metres of frontage footway and 459.6m ² of grass verge.
Quarterlands Lane	62m of traditional carriageway and 45m new footway.
Stoneyford Road	House No's 64 - 64A: 25 linear metres of footway.
The Homestead	Entrance junction at Drumbo Road: 9 linear metres of traditional carriageway associated footway. Drumbo Road to end: 75 metres of carriageway associated turning head and 1m ² round street lighting columns.
Tonagh Avenue	31 linear metres of frontage footway.
Whitehill Lodge	30 linear metres of shared surface carriageway with service strip on one side only, plus 45 linear metres of footway for pedestrian access from main road.

6.2 PLANNING APPLICATIONS

Dfl Roads Development Management teams provide specialist information and transportation advice to Lisburn & Castlereagh City Council Planning Service or Dfl Planning (as the case may be), on road related matters associated with proposed development applications.

Dfl Roads have started a Pre-Application Community Consultation (PACC) strategy with the intention of submitting a planning application for phase 3 of the North Lisburn Feeder Road (NLFR). This proposed section of road will link the B101 at Lady Wallace Avenue to The Pond Park Road north of the Beanstown Road junction.