



Department for
Infrastructure

An Roinn

Bonneagair

Department für

Infrastructure

www.infrastructure-ni.gov.uk

2023

ANNUAL REPORT

TO LISBURN AND CASTLEREAGH CITY COUNCIL

Photo: Resurfacing at Largymore Link - Largymore Drive

Contents

1.0	FOREWORD	5
2.0	EASTERN DIVISION DETAILS	7
3.0	NETWORK PLANNING.....	9
	DEVELOPMENT CONTROL.....	9
	PRIVATE STREETS.....	10
	LOCAL DEVELOPMENT PLANS.....	10
	PLANNING CONSULTATIONS.....	11
	PRIVATE STREETS - ADOPTIONS	11
	COMPLETED WORKS 2022 – 2023	11
4.0	NETWORK DEVELOPMENT.....	12
	LOCAL TRANSPORT AND SAFETY MEASURES.....	13
	COMPLETED WORKS 2022 – 2023	13
	PLANNED WORKS 2023 – 2024	17
	STREET LIGHTING.....	13
	COMPLETED WORKS 2022 – 2023	24
	PLANNED WORKS 2023 – 2024	27
	STRUCTURES.....	30
	COMPLETED WORKS 2022 – 2023	30
	PLANNED WORKS 2023 – 2024	31
	TELEMATICS.....	33
	COMPLETED WORKS 2022 – 2023	33
	PLANNED WORKS 2023 – 2024	34
5.0	NETWORK MAINTENANCE.....	35
	WINTER SERVICE	38
	STREET WORKS	38
	MAINTENANCE OPERATIONS – STRUCTURAL	38
	COMPLETED WORKS 2022 – 2023	38

STRUCTURAL MAINTENANCE – CARRIAGEWAY	38
CARRIAGEWAY RESURFACING	38
CARRIAGEWAY RESURFACING –LOCATIONS	39
SURFACE DRESSING	39
SURFACE DRESSING LOCATIONS	39
STRUCTURAL MAINTENANCE – FOOTWAYS.....	40
FOOTWAY RESURFACING LOCATIONS	40
STRUCTURAL MAINTENANCE – DRAINAGE	41
DRAINAGE LOCATIONS	41
STRUCTURAL MAINTENANCE- VERGE STRENGTHENING.....	41
VERGE STRENGTHENING - LOCATIONS.....	41
STRUCTURAL MAINTENANCE- CARRIAGEWAY REFURBISHMENT.....	41
CARRIAGEWAY REFURBISHMEN- LOCATIONS	42
PLANNED WORKS 2023 – 2024.....	43
STRUCTURAL MAINTENANCE – CARRIAGEWAY	43
RESURFACING – CARRIAGEWAY.....	43
CARRIAGEWAY – LOCATIONS.....	43
STRUCTURAL MAINTENANCE - FOOTWAYS.....	43
FOOTWAY RESURFACING - LOCATIONS.....	43
STRUCTURAL MAINTENANCE - SURFACE DRESSINGS.....	44
SURFACE DRESSINGS - LOCATIONS.....	44
STRUCTURAL MAINTENANCE – DRAINAGE	44
DRAINAGE - LOCATIONS.....	44
STRUCTURAL MAINTENANCE – VERGE STRENGTHENING	45
VERGE STRENGTHENING - LOCATIONS.....	45
STRUCTURAL MAINTENANCE – CARRAIGEWAY ENHANCEMENT.....	45

CARRAIGEWAY ENHANCEMENT- LOCATIONS	45
MAINTENANCE OPERATIONS - ROUTINE	45
COMPLETED WORKS 2022 – 2023	45
6.0 MAJOR PROJECTS AND ACTIVE TRAVEL	47
STRATEGIC ROAD IMPROVEMENTS	48
M1/A1 LINK AT SPRUCEFIELD.....	48
A1 JUNCTION PHASE 2	48
A1 HILLSBOROUGH TO SPRUCEFIELD.....	50
ACTIVE TRAVEL.....	51
COMPLETED WORKS 2022 – 2023	51
PLANNED WORKS 2023 – 2024	51
USEFUL NUMBERS.....	52

1.0 FOREWORD

I have pleasure in submitting the Roads 2023/24 Annual Report on the work of the Department for Infrastructure (DfI) Roads across the Lisburn & Castlereagh City Council area.

This report deals with works completed across the Council area during the year 2022/23 and sets out our initial proposals for schemes to be undertaken in the year 2023/24.

The road network is Northern Ireland's largest and most valuable strategic infrastructure asset. Its presence and quality is an implied assumption in all public services but has not been given the sufficient funding needed for its essential maintenance. This is a strategic risk to our future prosperity, safety and well-being. Road maintenance expenditure is consistently below the required levels to maintain our existing standard of infrastructure. By way of an example, improvements to extend the lifespan of our roads (through essential maintenance) over the past decade has totalled almost £1bn of underinvestment. The consequence of this underinvestment is an asset that deteriorates more quickly and results in more costly and complex interventions in the future. Put simply, we recognise that it would be better value to maintain the asset well and in a timely fashion but regrettably we currently do not have the funding to be able to do more.

The Secretary of State provided all NI Departments with budgets for 2023/24.

The Department is managing a 14% reduction in its 2023/24 Resource budget allocation when compared to 2022/23 on a like for like basis. Despite every effort to reduce spend across the Department and its Arms Length Bodies, we still face a significant funding gap.

The opening Capital budget for structural maintenance of the road network in 2023/24 is £85m, which is welcomed but still falls well short of the £143 million (£192m at today's prices) required annually to maintain the road network in a reasonable condition.

Capital funding has continued to be provided for Active Travel schemes given the requirement of the Climate Change Act (NI) 2022 to invest into walking, wheeling and cycling. The Department has put in place a range of measures to increase delivery of high-quality active travel infrastructure throughout Northern Ireland.

The Department is working closely with Councils to better understand their five-year active travel programme and developing an appropriate grant and support framework for the delivery of greenways. We have commissioned a Northern Ireland wide Active Travel Network Delivery plan which is due for consultation in 2024. When complete, this Plan will provide a firm basis for the prioritisation of delivery of active travel infrastructure within and connecting our towns and cities. The Plan will complement and take account of the greenways network. We are also implementing changes in the procurement of our active travel supply chain to ensure sufficient design resources are available to deal with increased demand in the coming years.

For many years, the Department has operated within a constrained Resource budget, with the opening baseline allocation insufficient to properly manage the public assets for which we are responsible and this is no different for this current year. As a result, we have historically relied on in-year funding to deliver many of our services. Added to these longer-term pressures are the unprecedented short-term increases in energy and inflation prices.

In the face of such acute budgetary pressure the Department is currently continuing with a Limited Service policy for routine maintenance activities such as defect repair and gully emptying. The Limited Service policy allows the Department to repair defects greater than 50mm on all roads including low trafficked rural roads and on high trafficked roads, defects greater than 20mm will also be repaired. The Department will aim to cut a single swathe on all roadside verges and sightline grass at least twice between April and October on the on more heavily trafficked roads and once a year on other roads. This aims to balance the need for road safety while protecting our environment and encouraging biodiversity. However, sightlines at bends and junctions will be cut as frequently as required to ensure public safety.

At present a full street lighting repair service continues during 2023/24.

However, with the uncertainty around budgets it is important for us to monitor all maintenance activities within the constrained funding available going forward and difficult decisions may need to be made to re-align activities within funding levels as the year progresses.

The Division is currently facing significant staffing pressures which is impacting on our ability to deliver key services and public safety responsibilities. Therefore, in an effort to maximise our effectiveness I would strongly encourage Councillors who have access to the internet to please report road defects using the DfI online reporting facility provided by NIDirect. My operational staff are of course available to assist with an emergency and public safety related queries.

I hope that you find this report informative. We value constructive comments on all its activities and I, along with acting Section Engineer Joe Torney, Graeme Salmon, and Deputy Secretary Colin Woods look forward to meeting the Council.

Des McFarlane
Divisional Roads Manager

2.0 EASTERN DIVISION DETAILS

Eastern Division is one of four Client Divisions within DfI Roads. It spans the local Council areas of Belfast and Lisburn & Castlereagh.

In Eastern Division we are responsible for approximately 2,564 km of public road together with 355 bridges, and 68,532 streetlights, 257 controlled crossings (Pelican/Puffin/Toucan & Zebra type), 264 traffic signalised junctions. We carry out functions under the headings:-

- Strategic Road Improvements & Active Travel – Road Improvement Schemes greater than £1.5 million on the strategic road network and active travel projects:
- Network Maintenance – Maintenance of Roads:
- Network Development – Street Lighting, Road Improvement Schemes up to £1.5 million and management of road structures:
- Network Planning - Development Control, Private Streets and Area Plans.

Divisional Headquarters

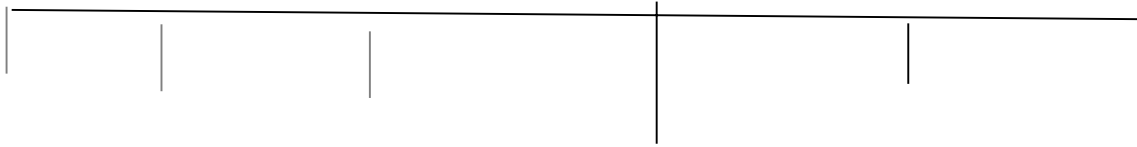
DfI Roads Service
Annexe 7,
Castle Buildings
Stormont Estate,
Upper Newtownards Road
Belfast, BT4 3SQ

Telephone: 0300 200 7899
Emergency After Hours: 0300 200 7899
E-mail: easternsecretariat@infrastructure-ni.gov.uk
Website: www.infrastructure-ni.gov.uk

Eastern Division - Senior Management Team

Des McFarlane

Divisional Roads Manager



Celine Duff

Network Planning Manager

Development Control, Private Streets, Development

Paul King

Network Development Manager

Traffic Management, Street Lighting, Local Transport and Safety Measures schemes

Gareth McKibbin

Network Maintenance Manager
Road maintenance operations, structural maintenance planning and programming, inspections, road maintenance standards, utility street works and winter service.

Graeme Salmon

Network Traffic Manager

Traffic Management minor improvements, pedestrian priority, traffic orders, signing, collision remedial schemes, resident and disabled parking, car parks and pay and display spaces, cycling and traffic calming.

Philip Robinson

Network Telematics Manager

Traffic signal control, operation of the Traffic Information and Control Centre, Traffic and travel information.

Karen Robb

Business Support Manager

Eastern Secretariat, Lands and Finance

Supported by:

Supported by:

Supported by:

Supported by:

Supported by:

Supported by:

Stephen Cash

Network Planning Manager (Acting)

Girvin

Miskimmin
Works & Structures

Senior Engineer

Lionel Walsh

Works & Structures
Senior Engineer

Evans Gibson

Street Lighting
Senior Engineer

Harry

Armstrong
Transportation Team Senior Engineer

David Williams

Senior Engineer Belfast South Section Office

Joe Torney

Senior Engineer

Lisburn & Castlereagh

Section Office (Acting)

Bill Fulton

Senior Engineer

Maintenance Support

Paul Thompson

Senior Engineer Belfast

North Section Office

(Acting)

Jim McGarry

Senior Engineer Traffic Management 1 (Acting)

Graham Campbell

Senior Engineer Traffic

Management 2

Stephen McMeekin

Senior Engineer Traffic Management 3

Gary McCracken

Senior Engineer
Traffic Signals & Road Safety

Ian Duff

Senior Engineer
Traffic Control

Christine Tolerton

Eastern Secretariat

Paul Gallagher

Lands Officer

Sheenagh Cooper

Finance Officer (Acting)

Geoff Lawther

Belfast Senior Engineer

Conleth Sloan

Network Planning Senior Engineer

Russell Moore

Private Streets Senior Engineer

Billy Cardwell

Lisburn & Castlereagh Senior Engineer (Acting)

3.0 NETWORK PLANNING

DEVELOPMENT CONTROL

DfI Roads in its consideration of planning applications, takes into account aspects of development which could prejudice traffic progression and safety in terms of junction capacity, access arrangements, parking standards and provision, road width, radii, gradients, drainage and sight lines. This consideration usually involves site visits and technical work. Compliance with transport policy and compatibility with road infrastructure is taken into account as well as any need for developer led improvements. Proposals are also checked for potential encroachment upon any future road corridors. A detailed Transport Assessment may be required for larger developments where potential traffic impact may extend to road junctions some distance from the development site and where infrastructure improvements are deemed necessary as mitigation. For smaller developments a Transport Assessment Form is required to be completed by the applicant in order to ascertain the likely impact.

In the case of housing developments, the Private Streets (NI) Order 1980 is applied if a planning application includes streets which are to become public and maintainable by the Department. Development Control along with the associated Private Streets Section determines the area to be adopted, arranges for the calculation of the bond amount, supervises construction of the streets and, following satisfactory completion by the developer completes the process for adoption into the public road network. Should the developer not complete the street, DfI Roads can take appropriate enforcement action under the Private Streets Order to ensure satisfactory completion of works funded by the bond.

Other Development Control work includes participating in pre-application discussions and planning meetings, preparation of evidence and presentation of this at Planning Appeals. Assistance is given with enforcement cases associated with breaches of planning control. Input is provided for the use of planning case officers at Council Planning Committee meetings with attendance by Development Control Officers as required.

PRIVATE STREETS

Private Streets Section inspects and manages the adoption of roads infrastructure in new developments. It also manages enforcement proceedings against developers who fail in their responsibility to provide road bonds before commencement of work on site. This takes the form of a series of warning letters followed if necessary by enforcement action.

DfI Roads will afford a developer every opportunity to fulfil their responsibilities in completing development infrastructure works to an adoptable standard. Where it becomes evident that a developer is either incapable or unwilling to complete the work, DfI Roads will consider initiating legal proceedings. This may result in the need for DfI Roads to complete the works and recover the costs.

DfI Roads has a finite contracting resource at its disposal and given the variation in annual funding levels, the availability of contracting resource to deliver private street enforcement works cannot be assured. In addition, DfI Roads has no control over the interests of other stakeholders, primarily Northern Ireland Water (NIW), which impact on the delivery of the completion of adoption works.

LOCAL DEVELOPMENT PLANS

The Department provides advice to the Council on transportation matters for Local Transport Plans and Community Plans as well as work on strategic development planning applications.

The Local Development Plan (LDP) will comprise of two development plan documents;

- ◆ The Plan Strategy (PS); and
- ◆ The Local Policies Plan (LPP)

As a consultee DfI Roads have a significant input into the process.

PLANNING CONSULTATIONS

Consultation Details 01/4/22-31/3/23	Lisburn & Castlereagh Council area
Number of consultations Received	916
Number of consultations replied to within 21 days	471 - 51%
Number of Pre-Planning Enquiries	44

PRIVATE STREETS - ADOPTIONS**COMPLETED WORKS 2022 – 2023**

Adoptions	Lisburn & Castlereagh Council Area
Number of adoptions	18
Adoption locations	Date of Adoption
Aikins Hill	15/06/22
Brokerstown	01/12/22
Coopers Mill Avenue & Coopers Mill Link	31/05/22
Cottars Chase	15/12/22
Danesfort Park	31/05/22
Drumbeg Cottages (<i>Enforcement site</i>)	15/09/22
Hulls Hill	22/11/22
Magheralave Meadows	04/04/22
Millmount Gardens	03/11/22
Myrtledene Drive	31/05/22
Old Church Heights	11/11/22
Primrose Mews	22/11/22
Royal Ascot Mews	07/07/22
Strawberry Hill Lane	23/02/23
The Rose Garden (<i>Enforcement site</i>)	08/09/22
Waringfield Park	04/08/22
Warren Park Close	27/10/22
Wyncroft Gardens/Crescent	27/10/22

4.0 NETWORK DEVELOPMENT

LOCAL TRANSPORT AND SAFETY MEASURES

The Regional Transportation Strategy (RTS) identified the importance of Local Transport and Safety Measures (LTSM) and highlighted some of the principal initiatives to be addressed, including:

- local improvements in towns across the North to assist pedestrians and cyclists;
- local highway infrastructure measures to improve safety, such as collision remedial schemes and traffic calming schemes; and
- Network Development schemes (minor works).

LTSM expenditure tends to be widely spread and most communities benefit, as an individual scheme is relatively low cost in comparison to the cost of projects on the Strategic Works programme. They are usually very visible measures and provide good value for money in terms of a safer road transport system, which benefits society, the economy, the environment; and actively contributes to everyone's quality of life.

Types of LTSM projects include:

- Minor Works and Micro Schemes
- Traffic Management
- Traffic Calming
- Collision Remedial
- Safer Routes to School
- Bus Priority Measures
- Road and Lane Closures
- Legislation

Structures

DfI maintain over 5,800 bridges and associated highway structures including sign gantries, retaining walls and vehicle restraint systems. All bridges must be capable of carrying 40 tonne vehicles and this requirement has led to an ongoing programme assessment, strengthening and replacement of bridges across the road network.

Street lighting

DfI Roads maintain over 290,000 streetlights. Regular outage repairs are carried out following reports of defects from elected representatives and/or the general public via our on line reporting system at www.nidirect.gov.uk or through our new call centre (0300 200 7899). DfI are also working to replace all older streetlights with more energy efficient LED lighting.

LOCAL TRANSPORT AND SAFETY MEASURES

COMPLETED WORKS 2022 – 2023

Total value of LTSM schemes
£ 577,095.00

CARRIAGEWAYS/MINOR WORKS

Road Name	Scheme Description	Status
Ballinderry Road / Lissue Road / Moneybroom Road, Lisburn Sightline Improvements.	Scheme to improve sightlines to the right and left hand side of Lissue Road onto the B104 Ballinderry Road and to the right hand side of Moneybroom Road onto the B104 Ballinderry Road.	Complete



Transportation – Park & Ride

Name	Scheme Description	Status
Sprucefield Park & Ride	Provision of water main	Complete

Safer Routes to School – Part time 20mph limits

Scheme Description	Status
Largymore Primary School	Complete
Ballymacash Primary School	Complete
Ballycarrickmaddy Primary School	Complete
St Coleman's Primary School	Complete
Dromara Primary School	Complete

Road Signs, Markings, and Bollards

Road Name	Scheme Description	Status
Hillhall Road, Branial Road, Lisburn	Junction on Bend on Left Warning Sign	Complete

NETWORK DEVELOPMENT

Rock Road, Dundrod	Hidden Dip Warning Signs, Junction Warning Signs, SLOW road markings	Complete
Hillhall Road, Carsons Lane	Give Way Sign	Complete
Hillhall Road, Drumbeg Road	SLOW road marking	Complete
Hillhall Road, Mill Road	SLOW road marking	Complete
6 Church Lane, Hillsborough	I Bar Marking	Complete
Glenside Road, Belfast	Poleglass Direction Sign	Complete
Hydebank Playpark, Newtownbreda Road, Belfast	Playground Warning Signage	Complete
Church Road, Temple	Pedestrian Crossing Warning Signage, SLOW road markings	Complete
Budore Road, Divis Road, Belfast	Advanced Give Way Sign, Marker Posts, Yellow Backing Board Give Way Sign	Complete
Baronscourt Road / Link , Carryduff	No Through Road Sign	Complete
94 Dromore Road, Ballynahinch	Crossroad Warning Sign	Complete
Burren Road, Bawn Hill Road, Ballynahinch	Staggered Junction Warning Sign	Complete
Carricknadarrieff Road, Annahilt	Hidden Dip Warning Sign	Complete
112-121 Comber Road, Hillsborough	Series of Bends Signs, High Friction Surfacing	Complete
Gransha Road, Dundonald	30mph Replacement Sticker	Complete
Cairnshill Close, Belfast	No Through Road Sign	Complete
A3 Moira Road / Cross Lane	Junction on Left Warning Sign	Complete
Bensons Road, Lisburn	Bend Warning Sign	Complete
Kilcorrig Road, Lisburn	Replacement Weight Limit Sign	Complete
Lissue Road, Ballinderry Road, Lisburn	Existing Low Bridge Warning Signage on Yellow Backing Boards	Complete
Stoneyford Road, Lisburn	Replacement Marker Posts, SLOW road marking	Complete
Knockbracken Gardens / Crescent, Carryduff	I Bar Marking	Complete
Prince William Road, Lisburn	Additional Lane Designation Arrows	Complete

NETWORK DEVELOPMENT

Manse Road, Belfast	40mph / National Speed Limit Signage	Complete
A26 Moira Road / Ballinderry Road, Glenavy	Double White Lines around right turn lane hatching system	Complete
Belsize Road, Elmwood Park, Lisburn	15m Corner Restrictions	Complete
114 and 124 Dromore Road, Ballynahinch	2no SLOW road markings	Complete
Annahilt	Red patches and roundels	Complete
Glebe Road, Church of Ascension, Annahilt	2 No. SLOW road markings	Complete
Ballymurphy Road, Ballynahinch Road	SLOW road markings	Complete
Killultagh Road, Ballycarrickmaddy Primary School	School Keep Clear Road Marking	Complete
A49 Old Ballynahinch Road, Cargacreevy	40mph Speed Limit Roundels	Complete
Station Road, Ballinderry	Marker Posts, SLOW road markings	Complete
Killynure Road, Carryduff	Road Narrows Sign	Complete
Tullyrusk Road, Budore Road, Dundrod	Replacement STOP signage	Complete
Clontonacally Road, Carryduff	School Warning Signs	Complete
Mealough Road, Drumbo	40mph / National Speed Limit Signage	Complete
Monlough Road West, B178 Comber Road	Junction on Left Warning Sign, SLOW road marking	Complete

Legislation – Speed Limits

Road Name	Scheme Description	Status
A49 Old Ballynahinch Road - Lisburn side of Ravernet Bridge to Cargacreevy Road	40mph speed limit	Complete
Manse Road, Belfast	40mph speed limit extension	Complete
Killultagh Road, Ballycarrickmaddy	30mph Speed Limit Extension	Complete

Legislation – Waiting Restrictions

Road Name	Scheme Description	Status
Warren Park	New double yellow lines	Complete
Antrim Place, Lisburn	New double yellow lines	Complete
Divis Road, Belfast	New double yellow lines	Complete

Legislation - Disabled Parking Bays

Road Name	Scheme Description	Status
31 Alanbrooke Avenue, Lisburn	Proposed accessible/ disabled parking bay	Complete
29 Roseville Park, Lisburn	Proposed accessible/ disabled parking bay	Complete
10 Tanners Court, Lisburn	Proposed accessible/ disabled parking bay	Complete
62 Hillview Avenue	Proposed accessible/ disabled parking bay	Complete
68 Galway Park, Dundonald	Proposed accessible/ disabled parking bay	Complete
62 Galway Park, Dundonald	Proposed accessible/ disabled parking bay	Complete

PLANNED WORKS 2023 – 2024

Estimated value of LTSM schemes

£270,000.00

Carriageways/Minor Works

Road Name	Scheme Description	Status
Millreagh Drive, Dundonald.	<p>Provision of a footway link between Millreagh Drive and Carrowreagh Road, Dundonald.</p> <p>Scheme design is complete and land acquisition is ongoing.</p>	Programmed *
McKinstry Road /Derrriaghy Road/ The Cutts	<p>Junction improvement scheme involving extension road widening in order to provide sufficient road space to fully control vehicle movements , including right turns within the signal phasing.</p> <p>Scheme includes and aims to:-</p> <p>Separately controlled right turning movements for traffic travelling in all directions to reduce right turning collisions.</p> <p>Provides an uncontrolled left slip from McKinstry Road into Derrriaghy Road to maintain junction capacity.</p> <p>Improved junction intervisibility.</p> <p>Improved Active Travel Opportunities at the location and in the general area by providing both new and upgraded facilities at the location.</p> <p>Improved pedestrian crossing facilities at the junction by the introduction of staggered Toucan crossings. Retention and improvement to the shared use footway stretching from the Mckinstry Rd / The Cutts junction to Stewartstown Road (eastern side), which will link to proposed cycling facilities within the Lagmore area.</p> <p>Widening the existing footway on the western side to also provide a shared use</p>	At tender stage, for construction start date of Feb 2023

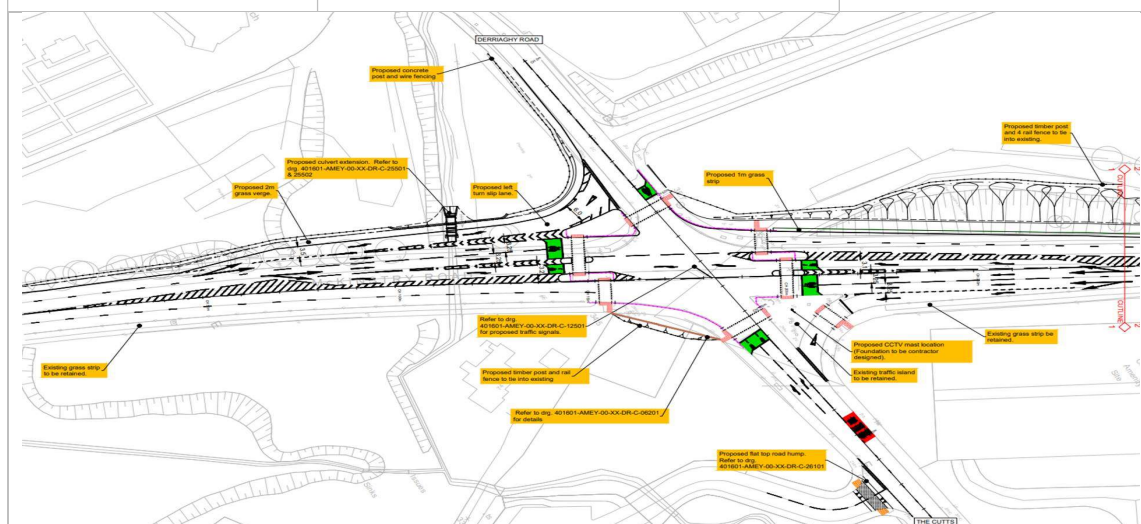
facility linking Stewartstown Road, the Business Park and newly constructed McDonalds and eventually linking into possible cycle lanes to Blacks Road. Also linking to the East / West Glider bus route and Glider Halt on Stewartstown Road.

To encourage active travel and walking / cycling to school. Oakwood Integrated Primary School is located close by the junction.

Provide new high-quality footways to encourage walking and cycling whether it be recreational, for safer routes to school and to work. The area has extensive high-density housing and a large population. McKinstry Road is a popular route for both walkers and joggers.

To resurfacing and strengthen the existing carriageway.

To replace and improve the traffic signals layout.



*Carried forward from 2022 / 23 programme.

Transportation - Bus Priority Measures

Road Name	Scheme Description	Status
Ballygowan Road / St John’s Road	Footway link to bus stop.	Work request submitted
Ballygowan Road / Pattersons Road	Hardstand at bus stop.	Work request submitted

NETWORK DEVELOPMENT

Enhancement of McKinstry Road Roundabout.	Improve the pathway for Belfast Rapid Transit - Glider vehicles.	Construction pending
Moneyreagh Road circa Church Road junction.	Provision of a replacement bus shelter	Preliminary Investigation
Ballygowan Road opposite Ryan Park	Provision of a replacement bus shelter	Preliminary Investigation
Upper Newtownards Road circa Craigleith Drive junction.	Provision of a replacement bus shelter	Preliminary Investigation

Transportation – Park & Ride

Road Name	Scheme Description	Status
Cairnshill Park and Ride Extension	Provision of an additional 359 spaces	Awaiting land Acquisition. Construction to be carried out as part of BRT2
Sprucefield Park & Ride	New access arrangement to accommodate Knockmore Link Road.	Planning application submitted

Traffic Calming

Road Name	Scheme Description	Status
Old Saintfield Road	From Saintfield Road to Saintfield Road	At design stage
Brokerstown Road	Between Glenavy Road and Knockmore Road	At design stage
Soldierstown Road	Aghalee Village 30mph to Lurgan Road	At design stage

Collision Remedial

Road Name	Scheme Description	Status
Belfast Road, Belsize Road, Lisburn	High Friction Surfacing	Programmed
Upper Braniel Road, Manse Road, A23 Ballygowan Road	High Friction Surfacing	Programmed
B2 Ballynahinch Road / Hillsborough Road Junction, Ballykeel	High Friction Surfacing	Complete*
Upper Galwally / Bradford Court / Forestside	Control of right turn within the signal phasing	Complete*

*Carried over from 22/23

Safer Routes to School – Part time 20mph limits

Road Name	Scheme Description	Status
Ballyinderry Road	St Aloysuis and St Patricks. Extension to zone.	At design stage
Dromara Primary School	Alternation to signing due to housing development.	In progress

Road Signs, Markings, and Bollards

Road Name	Scheme Description	Status
Knockbracken Road	Yellow backed bend warning signs	Programmed
Hospital Road/ Milltown Road, Belfast	DVA test centre signage	Ongoing
Gransha Road, Dundonald	Relocate Give way sign	Programmed
4 Dromore Road, Ballynahinch	Crossroads Warning Sign	Programmed
Glen Road, Maghaberry	Level crossing blue information sign	Programmed
A3 Moira Road/ Glen Road, Maghaberry	Level crossing warning signage	Programmed
112-121 Comber Road, Hillsborough	Chevron Signs	Programmed
Old Road, Maghaberry (Maghaberry Bound)	Crossroads Warning Sign and SLOW road marking	Programmed
Knocknarea Road, Lisburn	Unsuitable for HGVs blue signs	Programmed
Bensons Road, Lisburn	Edge of carriageway road marking	Programmed
A24 Carryduff Road, Bresagh Road, Lisbane Road	Staggered Junction Warning Sign	Programmed
Mullaghglass Road/ Barnfield Road, Belfast	2 No. junction warning signs	Programmed
Cluntagh Road, Magheraconluce, Dromore	Marker posts and wooden fence	Programmed
Carr Road, Carryduff	Horse Warning signs	Programmed
Pinehill Road, Drumbo	Junction on Right Warning Sign, SLOW road marking	Programmed
Belsize Road/ Elmwood Park, Lisburn	15 metre corner restrictions	Programmed
A30 Glenavy Road, Lisburn	SLOW road markings, 30mph roundel	Programmed
Dromara Road, Ballykeel	4 No. SLOW road markings	Programmed
Glen Road/ Ballystockart Road, Comber	SLOW Road Marking	Programmed
Knockmore Road/ James Craig Way, Lisburn	Keep Clear Road Marking	Programmed
Moneyreagh Road, Moneyreagh	Staggered Junction Warning Sign	Programmed
Artifinny Road, Hillsborough	Cattle Warning Signs	Programmed

NETWORK DEVELOPMENT

Station Road, Moira	Additional Level Crossing Signage	Programmed
Manse Road, Rocky Road, Belfast	15m Corner Restrictions	Programmed
Tansy Road, Moira	Horse Warning Signs	Programmed
Warren Park Gardens, Warren Park Drive, Lisburn	Give Way Signage	Programmed
Mill Road, Mealough Road, Carryduff	Advanced Give Way Sign	Programmed
Leapoges Road, Ballynahinch Road, Dromore	Yellow Backed Advanced Give Way Sign, 2 No. Yellow Backed Crossroad Warning Signs, 2 No. Yellow Backed Give Way Signs	Programmed
Millars Lane, Dundonald	2 No. School Road Markings, 2 No. School supplementary plates	Programmed
Royal Hillsborough	Change from Hillsborough to Royal Hillsborough on six signs along the Hillsborough Bypass	Programmed

Legislation – Speed Limits

Road Name	Scheme Description	Status
Drumbo Road, Drumbo	Proposed 30mph speed limit	Programmed
Brokerstown Road	Review of speed limit	At Consultation stage
McKinstry Road	Proposed 40mph	Programmed

Legislation – Waiting Restrictions

Road Name	Scheme Description	Status
Cairnshill Drive, Castlereagh	Extension of double yellow lines	Programmed
The Cutts, Dunmurry	New Single and Double Yellow Lines	Programmed
Linenhall Street, Lisburn	Proposed loading bay	Under review
Carnreagh Road, Royal Hillsborough	Proposed double yellow lines	Programmed
Comber Road, Dundonald	Proposed limited waiting restrictions	Programmed

Legislation – Weight Restrictions

Road Name	Scheme Description	Status
Royal Hillsborough Village	7.5T weight limit – Traffic impact assessment commissioned	Programmed

Legislation - Traffic Orders (Road & Lane Closures)

Road Name	Scheme Description	Status
-----------	--------------------	--------

NETWORK DEVELOPMENT

Hillhall Road / Largymore Drive	Banning of right turn movement	Under review
------------------------------------	--------------------------------	--------------

Legislation - Disabled Parking Bays

Road Name	Scheme Description	Status
12 Enler Park East, Dundonald	Proposed accessible/ disabled parking bay	Programmed
27d Ballybeen Park, Dundonald	Proposed accessible/ disabled parking bay	Programmed
82 Coronation Park, Dundonald	Proposed accessible/ disabled parking bay	Programmed
53 Coronation Park, Dundonald	Proposed accessible/ disabled parking bay	Programmed
32 Sloan Street, Lisburn	Proposed accessible/ disabled parking bay	Programmed
14 Ballinderry Park, Lisburn	Proposed accessible/ disabled parking bay	Programmed
14 West Winds Terrace, Anahilt	Proposed accessible/ disabled parking bay	Programmed
81 Causeway Mews, Lisburn	Proposed accessible/ disabled parking bay	Programmed
16a Enler Park East, Dundonald	Proposed accessible/ disabled parking bay	Programmed
28 Sloan Street, Lisburn (Removal)	Removal of accessible/ disabled parking bay	Programmed
49 Enler Park East, Dundonald (Removal)	Removal of accessible/ disabled parking bay	Programmed
28 Sloan Street, Lisburn (Removal)	Proposed accessible/ disabled parking bay	Programmed
32 Sloan Street, Lisburn	Proposed accessible/ disabled parking bay	Programmed

Pedestrian Measures

Road Name	Scheme Description	Status
Blaris Road, Lisburn	Toucan Crossing at Blaris Greenway	Programmed
Bells Lane, Queensway, Lisburn	Dropped Kerbs and Tactile Paving	At design stage
A1 Queensway, St Colmans, Lisburn	Puffin Crossing	At design stage
Ballinderry Road, St Aloysius, Lisburn	Puffin Crossing	At design stage
Alderwood Hill, St Itas, Belfast	Footway Widening	At design stage
Meeting Street, Main Street, Moira	High Friction coloured surfacing at crossing points	Programmed
Glen Road, Glenavy	Pedestrian & Traffic Island	Complete*

NETWORK DEVELOPMENT

Maghaberry	Controlled crossing at no12a/The Church on the Hill with extended and widened footway on behalf of LCCC	Programmed
Hillsborough Road / Laganbank Road junction Lisburn	Additional signal heads at pedestrian phase on Hillsborough road	Complete

*Carried over from 2022/23

STREET LIGHTING**COMPLETED WORKS 2022 – 2023**

Total number of sites	Total cost
126	£3.8m

Location	Scheme Description
Abercorn Park	Street Lighting Renewal Scheme
Ashgrove Park/Drive, Maghaberry	Street Lighting Renewal Scheme
Birch Green & Willow Court, Dunmurry	Street Lighting Renewal Scheme
Bresagh Road – Ulster Cottages	Street Lighting Renewal Scheme
Causeway End Park & Gardens, Lisburn	Street Lighting Renewal Scheme
Cloverhill Area	Street Lighting Renewal Scheme
Dromore Road, Hillsborough	Street Lighting Renewal Scheme
Edgcumbe Dr/Gardens/Park	Street Lighting Renewal Scheme
Eglantine Park, Culcavy	Street Lighting Renewal Scheme
Garvey Manor	Street Lighting Renewal Scheme
Glenavy Road & Killulatgh Road, Lisburn	Street Lighting Renewal Scheme
Glen View Maghaberry	Street Lighting Renewal Scheme
Gregg Streety/Mercer Street/Hillhall Road to RAB	Street Lighting Renewal Scheme
Hambleden, Drumbeg	Street Lighting Renewal Scheme
Hillhall Road to RAB	Street Lighting Renewal Scheme
Hillhall- Ballylesson junction	Street Lighting Renewal Scheme
Hillview Avenue & Carrisbrook	Street Lighting Renewal Scheme
Hugenot Drive – Grand St Area, Hilden	Street Lighting Renewal Scheme
Island Kelly, Nettlehill, St Marks Wood	Street Lighting Renewal Scheme
Kilmore Park Moira	Street Lighting Renewal Scheme
Kilowen Grange	Street Lighting Renewal Scheme
Leydene Court, Lisburn	Street Lighting Renewal Scheme
Lower Ballinderry Road – North St – Peel Gardens	Street Lighting Renewal Scheme
Maghaberry Manor	Street Lighting Renewal Scheme
Magowan Park Annahilt	Street Lighting Renewal Scheme
Millbrook – Roseville – Barley Hill, Hilden	Street Lighting Renewal Scheme
Moneyreagh Road	Street Lighting Renewal Scheme
Monument Park, Hillsborough	Street Lighting Renewal Scheme
Moybrick Road and Grove, Dromara	Street Lighting Renewal Scheme
Muskett Area, Carryduff	Street Lighting Renewal Scheme
Rathvarna Avenue/Mournview Park	Street Lighting Renewal Scheme
Richmond Court, Lisburn	Street Lighting Renewal Scheme
Riverside	Street Lighting Renewal Scheme
Sandown Park, Lisburn	Street Lighting Renewal Scheme
The Meadows Trummery Lane & Heights, Maghaberry	Street Lighting Renewal Scheme
The Old Mill, Culcavy	Street Lighting Renewal Scheme
Thiepval/Bentrim Road	Street Lighting Renewal Scheme

NETWORK DEVELOPMENT

Tonagh Area, Lisburn	Street Lighting Renewal Scheme
Waverley Avenue	Street Lighting Renewal Scheme
RETRO FIT SCHEMES	
Alanbrooke Avenue, Lisburn	Street Lighting Renewal Scheme
Aldon	Street Lighting Renewal Scheme
Ballylenaghan Area	Street Lighting Renewal Scheme
Ballymacash Drive, Lisburn	Street Lighting Renewal Scheme
Ballymacoss Hill, Lisburn	Street Lighting Renewal Scheme
Beechill- Prospect Park	Street Lighting Renewal Scheme
Beechdene	Street Lighting Renewal Scheme
Bests Hill	Street Lighting Renewal Scheme
Benvisteen Park, Dunmurry	Street Lighting Renewal Scheme
Belsize, Sharry Drive & Coverdale, Lisburn	Street Lighting Renewal Scheme
Brackenwood Drive/Close	Street Lighting Renewal Scheme
Brentwood Park	Street Lighting Renewal Scheme
Castle Avenue	Street Lighting Renewal Scheme
Cairnburn Area	Street Lighting Renewal Scheme
Catslemore Ave/Park	Street Lighting Renewal Scheme
Causeway End Meadows, Lisburn	Street Lighting Renewal Scheme
Cedar Grove/Knocknagoney Gardens	Street Lighting Renewal Scheme
Chestnut Hall, Maghaberry	Street Lighting Renewal Scheme
Clontara Park, Lisburn	Street Lighting Renewal Scheme
Crumlin Road, Lower Ballinderry	Street Lighting Renewal Scheme
Coachman-Ogles Grove, Culcavy	Street Lighting Renewal Scheme
Coolsara & Sepon	Street Lighting Renewal Scheme
Cumberland Area	Street Lighting Renewal Scheme
Dalboyne	Street Lighting Renewal Scheme
Derryvolgie Park, Lisburn	Street Lighting Renewal Scheme
Drumbeg Drive	Street Lighting Renewal Scheme
Dunbeg Park Area, Hillsborough	Street Lighting Renewal Scheme
Duncans Glen	Street Lighting Renewal Scheme
Dundrod Drive	Street Lighting Renewal Scheme
Elm Vale, Maghaberry	Street Lighting Renewal Scheme
Enler Park Central	Street Lighting Renewal Scheme
Ferndale – Glenwood Parak, Dunmurry	Street Lighting Renewal Scheme
Fulmar- Corby	Street Lighting Renewal Scheme
Grand Prix Park	Street Lighting Renewal Scheme
Glebe Area, Moira	Street Lighting Renewal Scheme
Glen Road, Glenavy	Street Lighting Renewal Scheme
Glen Road, Maghaberry	Street Lighting Renewal Scheme
Glenmore Area	Street Lighting Renewal Scheme
Glenside Park & Pinewood Drumbo	Street Lighting Renewal Scheme
Glenwood Green & Court, Lisburn	Street Lighting Renewal Scheme
Greenavon Mews, Lisburn	Street Lighting Renewal Scheme
Greycastle Manor/Crawford Park	Street Lighting Renewal Scheme
Grove Park, Culcavy	Street Lighting Renewal Scheme
Hanwood Area	Street Lighting Renewal Scheme
Hamilton Gardens	Street Lighting Renewal Scheme
Harmony Drive, Lisburn	Street Lighting Renewal Scheme

NETWORK DEVELOPMENT

Hilden Court, Lisburn	Street Lighting Renewal Scheme
Hillhall Estate	Street Lighting Renewal Scheme
Hillsborough Area Wood Poles	Street Lighting Renewal Scheme
Hollybrook, Aghalee	Street Lighting Renewal Scheme
Hollyburn - Glenbrae	Street Lighting Renewal Scheme
Holstein – Ayrshire Area	Street Lighting Renewal Scheme
Kennedy Drive, MV Park	Street Lighting Renewal Scheme
Killultagh Area, Glenavy	Street Lighting Renewal Scheme
Kileaton Place	Street Lighting Renewal Scheme
Kilowen Park	Street Lighting Renewal Scheme
Kinross, Sperrin, Gortin	Street Lighting Renewal Scheme
Laganville – Beechfield Park	Street Lighting Renewal Scheme
Lakeland Manor, Annahilt	Street Lighting Renewal Scheme
Largyomre, Lisburn	Street Lighting Renewal Scheme
Limetree- Hollyburn	Street Lighting Renewal Scheme
Linen Green, Lisburn	Street Lighting Renewal Scheme
Lisburn Road, Moira	Street Lighting Renewal Scheme
Lombard	Street Lighting Renewal Scheme
Lyngrove, Glenavy	Street Lighting Renewal Scheme
Lynnwood Mews, Glenavy	Street Lighting Renewal Scheme
Milltown Area Derriaghy, Lisburn	Street Lighting Renewal Scheme
Mornington Area, Lisburn	Street Lighting Renewal Scheme
Monaville	Street Lighting Renewal Scheme
Mountain View	Street Lighting Renewal Scheme
Old Church Place, Lisburn	Street Lighting Renewal Scheme
Penworth Green, Lisburn	Street Lighting Renewal Scheme
Plantation Road/Ave	Street Lighting Renewal Scheme
Rathvarna Area, Lisburn	Street Lighting Renewal Scheme
Redwood Area, Dunmurry	Street Lighting Renewal Scheme
Ridge-Barleywood Derriaghy	Street Lighting Renewal Scheme
Sandyhill Park Area	Street Lighting Renewal Scheme
Thistlemount Park	Street Lighting Renewal Scheme
Thornleigh	Street Lighting Renewal Scheme
Tynedale	Street Lighting Renewal Scheme
Warren Park	Street Lighting Renewal Scheme
Whitehill Lodge & Mews, Lisburn	Street Lighting Renewal Scheme
Wellington Park, Maghaberry	Street Lighting Renewal Scheme
Windermere Area	Street Lighting Renewal Scheme
Whitla	Street Lighting Renewal Scheme
Windmill Road, Hillsborough	Street Lighting Renewal Scheme
Woodvale & Cornmill Dromara	Street Lighting Renewal Scheme

PLANNED WORKS 2023 – 2024

Total number of sites proposed	Estimated cost
115	£2.35M

Location	Scheme Description
Aughnatrisk & Hermitage, Culcavy	Street Lighting Renewal Scheme
Aughrim Court	Street Lighting Renewal Scheme
Ballynahinch Road, Annahilt	Street Lighting Renewal Scheme
Bamford Park, Dundrod	Street Lighting Renewal Scheme
Barnfield Road and Grange, Lisburn	Street Lighting Renewal Scheme
Belvoir Park and Crescent, Lisburn	Street Lighting Renewal Scheme
Brooklands Avenue Area	Street Lighting Renewal Scheme
Chapel Road jn Glenavy	Street Lighting Renewal Scheme
Cherryvalley	Street Lighting Renewal Scheme
Danesfort, Earlfort and Kingsfort Lodge Moira	Street Lighting Renewal Scheme
Down Royal, Gravelhill	Street Lighting Renewal Scheme
Dromore St, Ballynahinch & Rathfriland Road, Dromara	Street Lighting Renewal Scheme
Dundrod Court, Drumbeg Court	Street Lighting Renewal Scheme
East Link Road Castlereagh	Street Lighting Renewal Scheme
Elm Corner & Pine Cross-Woodside, Dunmurry	Street Lighting Renewal Scheme
Edenview Road Maghaberry	Street Lighting Renewal Scheme
Eglantine Road, Crescent & Court, Lisburn	Street Lighting Renewal Scheme
Florence Court, Bog Road	Street Lighting Renewal Scheme
Granville- Downshire Area, Hillsborough	Street Lighting Renewal Scheme
Glebe Road, Glebe Manor Annahilt	Street Lighting Renewal Scheme
Glen Road Castlereagh	Street Lighting Renewal Scheme
High Grove, Shelling Court, Glen Court, Ravernet	Street Lighting Renewal Scheme
Hillhall Road	Street Lighting Renewal Scheme
Iniscarn, Ardane, Gortmore, Lisburn	Street Lighting Renewal Scheme
James Craig & Molyneux, Lisburn	Street Lighting Renewal Scheme
Island Kelly, Nettlehill, St Marks Wood	Street Lighting Renewal Scheme
Kirkwood and Maysfield, Lisburn	Street Lighting Renewal Scheme
Laganbank - Linenhall, Hill St, Lisburn	Street Lighting Renewal Scheme
Legacurry	Street Lighting Renewal Scheme
Maghaberry Road/Old Road/Hammond Road, Maghaberry	Street Lighting Renewal Scheme
Magheraconluce Road, Conluce and Blenheim , Annahilt	Street Lighting Renewal Scheme
Magheralave Grange, Manor and Court, Lisburn	Street Lighting Renewal Scheme
Manor Drive, Church Lane Barrack Street, Lisburn	Street Lighting Renewal Scheme
McKeown, Wardsborough, Graham Gdns, Lisburn	Street Lighting Renewal Scheme
Meeting Street, Rawdon & McCartney Place, Moira	Street Lighting Renewal Scheme

NETWORK DEVELOPMENT

Moira and Lilburn Rd, Glenavy	Street Lighting Renewal Scheme
Moira Road ,Moyrusk road, Church Lane, Lisburn	Street Lighting Renewal Scheme
Oldfort and Deramore area Moira	Street Lighting Renewal Scheme
Priory Close, Lambeg	Street Lighting Renewal Scheme
Ridgeway- Brookvale Rise. Lisburn	Street Lighting Renewal Scheme
Sandymount Ballyskeagh	Street Lighting Renewal Scheme
St John Park, Moira	Street Lighting Renewal Scheme
St Johns Road, St James, Orchard, Hanley Hall	Street Lighting Renewal Scheme
The Grange, old Forge, Ballysessey, Glenavy	Street Lighting Renewal Scheme
The Pine& Abercorn, Culcavy	Street Lighting Renewal Scheme
Upper Newtownards Rd (Dunlady to Kempestone)	Street Lighting Renewal Scheme
Wandswort Road	Street Lighting Renewal Scheme
Waringmore and Lurgan Road Moira	Street Lighting Renewal Scheme
Woodside	Street Lighting Renewal Scheme
Wynfort Lodge, Moira	Street Lighting Renewal Scheme
RETRO FIT SCHEMES	
Annacloy Park, Culcavy	Street Lighting Renewal Scheme
Annesley Manor – Fairfields	Street Lighting Renewal Scheme
Avonmore	Street Lighting Renewal Scheme
Ballygowan Road/Upper Braniel	Street Lighting Renewal Scheme
Ballyskeagh Road, Lisburn	Street Lighting Renewal Scheme
Bathgate Drive	Street Lighting Renewal Scheme
Belfast Road, Glenavy	Street Lighting Renewal Scheme
Belvoir Area	Street Lighting Renewal Scheme
Benvisteen Park, Lisburn	Street Lighting Renewal Scheme
Brerton Hollow/Crescent	Street Lighting Renewal Scheme
Carlton Hill	Street Lighting Renewal Scheme
Carnreagh Road	Street Lighting Renewal Scheme
Causeway End Road	Street Lighting Renewal Scheme
Church Road, Moneyreagh	Street Lighting Renewal Scheme
Clonduff Area	Street Lighting Renewal Scheme
Damhead-Halfpenny Gate Road	Street Lighting Renewal Scheme
Danesfort Park, Carryduff	Street Lighting Renewal Scheme
Duncans Glen	Street Lighting Renewal Scheme
Edenvale Area	Street Lighting Renewal Scheme
Ferguson Drive	Street Lighting Renewal Scheme
Ferndene Road/Gardens Area	Street Lighting Renewal Scheme
Four Winds Area	Street Lighting Renewal Scheme
Greenwood	Street Lighting Renewal Scheme
Glenavy Road, Lisburn	Street Lighting Renewal Scheme
Glenview	Street Lighting Renewal Scheme
Glenwood Park, Copse Row, Dunmurry	Street Lighting Renewal Scheme
Gransha Road	Street Lighting Renewal Scheme
Hampton Park	Street Lighting Renewal Scheme
Hermitage, Culcavy	Street Lighting Renewal Scheme
Kilynure Area	Street Lighting Renewal Scheme
Killultagh Area, Glenavy	Street Lighting Renewal Scheme
Kings Road	Street Lighting Renewal Scheme

NETWORK DEVELOPMENT

Kings Chase	Street Lighting Renewal Scheme
Kings Oak	Street Lighting Renewal Scheme
Lady Wallace Area	Street Lighting Renewal Scheme
Lambert Area	Street Lighting Renewal Scheme
Laurel Wood-Brook- Lodge, Ballinderry	Street Lighting Renewal Scheme
Largymore Link, Lisburn	Street Lighting Renewal Scheme
Lisburn Road, Moira	Street Lighting Renewal Scheme
Lisburn Road, Hillsborough	Street Lighting Renewal Scheme
Lynnwood Mews, Lisburn	Street Lighting Renewal Scheme
Magheralave Meadows	Street Lighting Renewal Scheme
Magherlave Park	Street Lighting Renewal Scheme
Magheralave Road- Fairfield Road	Street Lighting Renewal Scheme
Magheralave Road (Townside)	Street Lighting Renewal Scheme
Mersey Street	Street Lighting Renewal Scheme
Melmore Drive, Eaton Court, Railway Street, Dunmurry	Street Lighting Renewal Scheme
Mourne View Park	Street Lighting Renewal Scheme
Moyne Park	Street Lighting Renewal Scheme
Nettlehill Road	Street Lighting Renewal Scheme
North Circular Road, Lisburn	Street Lighting Renewal Scheme
Pennington Park	Street Lighting Renewal Scheme
Purdysburn Village	Street Lighting Renewal Scheme
Ranfurly Drive	Street Lighting Renewal Scheme
Roddens Crescent	Street Lighting Renewal Scheme
Rosepark Area	Street Lighting Renewal Scheme
Rosetta/Forestsides Area	Street Lighting Renewal Scheme
Saintfield Road M1 RAB	Street Lighting Renewal Scheme
School Road, Breda Road	Street Lighting Renewal Scheme
Soliderstown Road, Aghalee	Street Lighting Renewal Scheme
Station Road, Moira	Street Lighting Renewal Scheme
Sydenham Drive	Street Lighting Renewal Scheme
The Old Mill Heights, Culcavy	Street Lighting Renewal Scheme
Tornaroy Road, Hannashtown	Street Lighting Renewal Scheme
Wanstead Road	Street Lighting Renewal Scheme

STRUCTURES**COMPLETED WORKS 2022 – 2023****STRUCTURES**

Total number of sites	Total cost
26	£47,222.00

Location	Scheme Description
PRINCIPAL INSPECTIONS OF BRIDGES AND CULVERTS	
Structure No 20218 – Beaully Drive Culvert	Complete*
Structure No 20280 – Manse Road	Complete
Structure No 20306 – Mill Road West, P’Burn	Complete
Structure No 90148 – Blacks Bridge	Complete
Structure No 90207 – Paddy’s Bridge	Complete
Structure No 90243 – Wolfendens Bridge	Complete
Structure No 90248 – Hilden, Disused Canal	Complete
Structure No 90254 – Belfast Road	Complete
Structure No 90255– Magherlave Road(railway)	Complete
Structure No 90286– Stoneyford Bridge	Complete
Structure No 90306– Leap Bridge	Complete
Structure No 90482– New Mill Bridge	Complete
Structure No 90522– River Road	Complete
Structure No 90601– Glenavy Road	Complete
Structure No 90657– Springmount Road	Complete
Structure No 90670– The Cutts, Derriaghy	Complete
Structure No 90482– Mullaghcarton Road	Complete*
Structure No 90658 – Lisburn Road	Complete*
OTHER ANCILLARY WORKS	
Vegetation from 3 No Road over Rail Structures	Complete
Structure No 20231 – Holygate – New Handrail	Complete
REMEDIAL WORK ON MASONRY STRUCTURES	
Structure No 90282 – Whitemountain Road – Weathering and Silting Obstructions	Complete
Structure No 90464 – Knocknarea Road Bridge – Parapet Upgrade	Complete
Structure No 90544 – Glen Road, Hillhall – Ingress of Water and Parapet Works	Complete
Structure No 90303 – Furze Road – Vegetation removal and Parapet Repairs	Complete*
Structure No 90304 – Crewe Hill – Vegetation removal and Parapet Repairs	Complete*

Additional to programme completed*

PLANNED WORKS 2023 – 2024

STRUCTURES

Total number of sites proposed	Estimated cost
58	£40,000

STRUCTURES LOCATIONS

Location	Scheme Description
PRINCIPAL INSPECTIONS OF BRIDGES AND CULVERTS	
Structure No 20274 - Hospital Road	Programmed
Structure No 20314 – Cairnshill Subway	Programmed
Structure No 90037 – Moira Road	Programmed
Structure No 90314 – Black Bridge	Complete
Structure No 90599 – Ivy Hill	Complete
Structure No 90139 – Leapogues Road	Complete
Structure No 90140 – Ballynahinch Road	Complete
Structure No 90150 – Cargycray Road	Complete
Structure No 90219 – Carr Road Bridge	Programmed
Structure No 90230 – Youngs Bridge, Maze	Programmed
Structure No 90234 – Moores Bridge	Programmed
Structure No 90237 – Union Bridge	Programmed
Structure No 90238 – Queens Road, Subway	Programmed
Structure No 90242 – Bells Bridge	Programmed
Structure No 90249 – Hilden Bridge	Programmed
Structure No 90254 – Lambeg Canal Bridge	Programmed
Structure No 90256 – Ballinderry Road(railway)	Programmed
Structure No 90257 – Causeway End Bridge	Programmed
Structure No 90265 – Crooked Bridge	Programmed
Structure No 90273 – Sophias Bridge	Programmed
Structure No 90277 – Lough Road	Programmed
Structure No 90280 – Huntshill Road	Programmed
Structure No 90283 – Huntshill Road	Programmed
Structure No 90285 – Stoneyford Road	Programmed
Structure No 90296 – Glenavy Bridge	Programmed
Structure No 90300 – Glenavy Footbridge	Programmed
Structure No 90302 – Tullynewbank Road	Programmed
Structure No 90303 – Crewe Hill	Programmed
Structure No 90305 – Chapel Road	Programmed
Structure No 90308 – Glen Road	Programmed
Structure No 90309 – Furze Road	Programmed
Structure No 90414 – Knockmore Road	Programmed
Structure No 90436 – Maze Bridge	Programmed
Structure No 90437 – The New Bridge	Programmed
Structure No 90439 – Trummery Lane	Programmed
Structure No 90441 – Lisburn Road	Programmed

NETWORK DEVELOPMENT

Structure No 90447 – McPhersons Bridge	Programmed
Structure No 90452 – Meeting House Road	Programmed
Structure No 90453 – Ballinderry Road	Programmed
Structure No 90455 – Millvale Road	Programmed
Structure No 90459 – Moyrusk Road	Programmed
Structure No 90463 – Dunygarton Road	Programmed
Structure No 90464 – Knocknarea Road	Programmed
Structure No 90465 – Bushfield Road	Programmed
Structure No 90484 – Spencers Bridge	Programmed
Structure No 90488 – Lough Raod	Programmed
Structure No 90490 – Aghalee Bridge	Programmed
Structure No 90492 – Ballydonaghy Bridge	Programmed
Structure No 90493 – Knockcairn Bridge	Programmed
Structure No 90515 – The Metal Bridge	Programmed
REMEDIAL WORK ON MASONRY STRUCTURES	
Structure No 20305 – Mill Road West - Parapet Repairs	Complete
Structure No 90266 – Crooked Bridge - Parapet Repairs	Programmed
River Lagan Bridge Scheme parapet upgrade	Programmed
Structure No 90436 - Maze Bridge – Masonry Repairs and Vegetation Removal	Complete
Hillsborough Road Bridge– Parapet Replacement	Programmed
OTHER ANCILLARY WORKS	
Hillsborough Road, Dromara – Repairs to Retaining Wall	Complete
Vegetation from 7 No Road over Rail Structures	Programmed

NETWORK TRAFFIC TELEMATICS

COMPLETED WORKS 2022 – 2023

Scheme Description	Scheme Status
TRAFFIC AND TRAVEL INFORMATION	
We will upgrade the TrafficWatchNI website to ensure it remains robust, secure and fit for purpose.	Phase 3 - complete
We successfully increased the number of CCTV camera feeds to the website from 20 to 140. The refresh rate has also reduced from 30 seconds to 2 seconds.	Complete
We will upgrade our Automatic Number Plate Recognition (ANPR) Cameras on the network. The new ANPR cameras are high quality and use the latest optical recognition technology which will continue to provide reliable and timely journey times to Road Users.	Complete
URBAN CLOSED-CIRCUIT TELEVISION (CCTV) CAMERAS	
We will continue to identify new locations where the provision of cameras will enhance the coverage of the CCTV network to improve traffic control capabilities.	Ongoing
TRAFFIC CONTROL SYSTEMS	
We will continue the rollout of Server to Server Bus priority on Quality Bus Corridors.	Ongoing
We have upgraded our Urban Traffic Control System (UTC) to STRATOS which helps ensure the system remains robust, secure and user friendly.	Complete
We have researched and developed a bespoke communication channel between our UTC system and our motorway control system, thus increasing resilience of our systems.	Complete
TRAFFIC MANAGEMENT	
Utilise TICC's communications and control infrastructure together with the CCTV network to ensure traffic flows are monitored and effectively managed on the urban and motorway networks.	Ongoing
We will monitor traffic signal timings to ensure they are appropriate for the prevailing traffic conditions.	Ongoing
Purchased new equipment to replace some of the aging infrastructure currently on the network.	Complete
Signal junction upgrade at Queens Rd / Civic Centre incorporating extra low voltage equipment and puffin crossing facilities (£195k)	Complete

PLANNED WORKS 2023 – 2024

Scheme Description	Scheme Status
TRAFFIC AND TRAVEL INFORMATION	
We will upgrade the TrafficWatchNI website to ensure it remains robust, secure and fit for purpose.	Ongoing
URBAN CLOSED-CIRCUIT TELEVISION (CCTV) CAMERAS	
We have plans to further increase the number of CCTV sites available on the website from 140 to 150 to provide coverage at critical network junctions and improve traffic control capabilities.	Ongoing
TRAFFIC CONTROL SYSTEMS	
We will continue the rollout of Server to Server Bus priority on Quality Bus Corridors.	Ongoing
We will continue to upgrade and add to our Urban Traffic Control System (UTC) to ensure the system remains robust and secure.	Ongoing
We will commence design on IP to the Roadside for our Motorway network to enable growth in Intelligent Mobility and Connected Vehicles.	Ongoing
TRAFFIC MANAGEMENT	
Utilise TICC communications and control infrastructure together with the CCTV network to ensure traffic flows are monitored and effectively managed on the urban and motorway networks.	Ongoing
We will monitor traffic signal timings to ensure they are appropriate for the prevailing traffic conditions.	Ongoing
We will seek to purchase and install new equipment and replace aging infrastructure on the network, when funds are available.	Ongoing
We have commenced a review of our ITS infrastructure to ensure that we are delivering the best service possible to the public.	Ongoing
Subject to adequate funding being made available we will upgrade equipment at traffic signal-controlled junctions as required.	Ongoing
MOTORWAY NETWORK SAFETY	
We will undertake feasibility work on the replacement of the end-of-life motorway Emergency Roadside Telephone (ERT) system and subject to adequate funding commence design on a replacement system.	Ongoing
We will undertake feasibility work into upgrading access to sites for maintenance personal and subject to adequate funding commence design on improving health and safety going forward.	Ongoing
We will improve communication resilience to assets on the network.	Ongoing
PEDESTRIAN MEASURES	
Subject to adequate funding being made available we will upgrade controlled pedestrian crossing equipment as required	Ongoing

5.0 NETWORK MAINTENANCE

EXPLANATION OF MAINTENANCE OPERATIONS

RESURFACING AND STRENGTHENING

Roads generally fail by cracking and rutting. They usually do not fail suddenly, but gradually deteriorate due to the impact of traffic, age and weathering. Wear normally appears as either excessive permanent deformation of the whole or part of the carriageway structure or is associated with the cracking of the bituminous layers.

Roads are normally designed for an operational life of 20 years. During this period and beyond, there is a need for the highway authority to intervene at times to either treat or replace the top layer of bituminous material known as the "surface course" or to provide additional depth to preserve the underlying structure of the road and extend its life.

Resurfacing is the application of a layer of this mixed material of 40mm minimum thickness. It strengthens the road, seals it against the ingress of water, and improves skidding resistance and riding quality.

Surface course Bitumen Macadam (bitmac) has an expected life of 7-12 years which can be extended by subsequent surface dressing. Bitmac is a more flexible material than Asphalt and more suitable for the deformation and movement associated with weaker underlying ground conditions.

Asphalt resurfacing is more appropriate to heavily trafficked roads and junctions having a robust road base. It is more expensive and has a longer expected life of 15-20 years. Resurfacing of existing roads can usually be carried out on top of the existing surface (overlay) but where drainage or kerb levels or bridge heights are restricted the surface may need to be removed before resurfacing takes place.

SURFACE DRESSING

This process involves spraying a bitumen emulsion binder onto the existing road surface, followed by a layer of stone chippings, which is then rolled. This seals the road preventing ingress of water thus extending the life expectancy of the road and also helps to improve the skid resistance of the surface.

DRAINAGE WORKS

The quick and effective drainage of surface water from the carriageway contributes significantly to road safety and helps to prevent damage to the road itself. Improvement works carried out include the upgrading of the existing drainage facilities to ensure effective dispersal of surface water and prevent as far as possible the occurrence of standing water or flooding of the road. In many cases the provision of new drainage facilities have to be undertaken.

GRASS CUTTING

Grass cutting is carried out for road safety reasons rather than for amenity purposes. The Department's grass cutting policy has evolved to focus on protecting wildlife and promoting biodiversity when managing roadside verges. A single swathe will be cut along the verges on the strategic road network twice per year. Other areas that are needed for road safety purpose, such as sightlines at junctions, will also be cut at least twice each year with additional cuts as and when needed. A similar approach will be introduced on heavier trafficked rural roads and on lighter trafficked rural roads, one cut will be carried out late in the growing season.

GULLY EMPTYING

The Department currently aims to maintain the level of service and inspect and clean, where necessary, all gullies once annually. Open outlets are also cleaned once per year.

DEALING WITH CORRESPONDENCE / PUBLIC INTERFACE

The Department, and in particular DfI Roads, receives a large volume of correspondence from the public and public representatives throughout the year. The level of correspondence has been increasing in recent years at a time when staff resources have been reducing.

In a large number of cases the correspondence relates to reports of individual defects on the road network, such as potholes, blocked gullies, defective streetlights etc. In order to improve efficiency, the Department now deals with correspondence which is only reporting routine defects differently from other general correspondence. Therefore, if a member of the public, or public representative, writes to the Department by letter or e-mail, reporting a routine defect then our staff will simply log this information onto our work systems and an automated response detailing the query reference number

will issue to the correspondent. Staff will then deal with the query received in accordance with our maintenance standards.

If the initial letter relates to a more general roads issue rather than simply reporting a defect, a substantive reply will issue in the normal way.

In an effort to reduce the volume of correspondence reporting routine defects, we are encouraging the reporting of defects through the on-line “Report a Fault” section on our website. Alternatively, a phone call can be made to one of our telephone operatives who will record the details directly onto the “Report a Fault” system. You can report a fault on-line at <https://www.nidirect.gov.uk/> or by telephone to 02890 540540.

It is noted that the vast majority of dealings with the public are by phone or email and the number of visitors to our offices has reduced considerably as communication methods have improved. However, Section Offices will remain open to the public from 10am - 12noon with meetings outside of this able to be arranged by appointment also.

EMERGENCY OUT OF OFFICE HOURS ASSISTANCE

We have a call centre to deal with calls outside normal office hours. DfI Roads personnel can be called upon to deal with emergencies such as flooding, obstructions such as fallen trees, and when requested by Emergency Services, in clearing up after road traffic collisions. Routine roads related matters are not dealt with by this service and should be raised with DfI Roads offices during normal working hours. The Emergency out of Hours telephone number is: 0300 200 7899.

WINTER SERVICE

The Department carries out precautionary salting of carriageways on identified priority roads to prevent ice from forming. Every night from the middle of October until the middle of April around 300 staff and over 130 gritters are on standby to ensure the main roads are salted. The aim is to provide a winter service which, as far as is possible, will permit main road traffic to move safely and freely in wintry conditions.

The winter service operation involves salting around 7,000 kilometres of main roads in just over three hours, at a cost of approximately £85,000 per night.

During snow, all gritters will be fitted with snow ploughs and efforts directed to clearing snow from main roads. Arrangements are also in place to enlist the help of contractors, including farmers, to clear blocked roads. Approximately 5,600 salt bins and 58,000 grit piles are placed at strategic locations for use on a self-help basis. At the end of last season, the Department had arrangements in place with all 11 councils for the

treatment of town and city centre footways during prolonged severe weather. Where necessary, officials are consulting with councils to roll forward these agreements.

Around 65,000 tonnes of salt is used in an average winter.

The Winter Service average normal budget requirement is £7m, but has, in the past, been £10m for a bad winter as was the case in 2017-18.

Additional information, including our winter service leaflet, can be found on our [website](#).

WINTER SERVICE

Winter Service - dates of operations – Eastern Division

Description	Start date	Completion date
Official winter maintenance period 2022-2023	5 November 2022	7 April 2023
Salting Operations in this period	73	

Winter Service - details of operations

Description	Details
Depot locations in Eastern Division	Airport Road, Sprucefield & Balloo
Number of gritters used during 1 gritting action	23
Number of personnel involved in a gritting operation in Eastern Division	27
Length of roads salted in Eastern Division	1,306km
Total volume of salt used during 2022-2023 winter season	13,119 tonnes

STREET WORKS

Street Works by Utility companies

Number of Inspection Units Eastern Division 22-23	Target Inspection Units 22-23 Eastern Division, 30% target.	Number of Inspection Units 22-23 Eastern Division, Completed.
10663	3201	3103

MAINTENANCE OPERATIONS – STRUCTURAL

COMPLETED WORKS 2022 – 2023

Structural Maintenance	Total Cost 2022-23
Lisburn & Castlereagh	£ 7,320,000

STRUCTURAL MAINTENANCE – CARRIAGEWAY

CARRIAGEWAY RESURFACING

	Total length completed
Road Network	30.14 Km
Road Recovery	21.10 Km

RESURFACING – locations

Council Area	Road Name
Lisburn & Castlereagh	Kensington Park
	Largymore Drive
	Lansdowne Park
	Moneyreagh Road Phase 1
	Carrowreagh Road
	Mullaghcarron Road
	Maghaberry Road Phase 1
	Maghaberry Road Phase 2
	Hornbeam Road
	Lilac Walk
	Linden Walk
	Johnston Park
	A26 Moira Road (TRN)
	Edentrillick Roads Phase 1
	Carnreagh Road
	Railway Street, Derriaghy
	Tullynora Road*
	Mullaghdra Road East*
	Stockdam Road*
	Knockany Road*
	Begney Hill Road*
	Lough Road*
* Roads Recovery Fund Scheme	

SURFACE DRESSING

Total area completed
220,123m ²

SURFACE DRESSING locations

Council Area	Road Name
Lisburn & Castlereagh	Irwinstown lane
	Hillhead Road
	Haddockstown Road
	Brackenhill Road
	Riverdale Road
	Kilwarlin Road

NETWORK MAINTENANCE – ROUTINE MAINTENANCE REPORT

	Laverysbridge Road
	Glen Road
	Yewtree Hill Road
	Brookmount Road
	Y Bridge Road
	Temple Road
	Gortrany Road
	Refords Lane
	Old Church Lane
	Lisnabilla Road
	Dagger Road
	Mckees Bridge Road
	Drumlough Road
	Ravarnet Road
	Park Road
	Woodvale Road
	Quarterlands Road
	Ballycoan Road
	Gannon Road
	Leverogue Road
	Moss Road
	Dunlady Road
	Hillsborough Road
	Gransha Road
	Glenavy Road
	Stoneyford Road
	Ballinderry Road

STRUCTURAL MAINTENANCE – FOOTWAYS

FOOTWAY RESURFACING

Total length completed
7.2Km

FOOTWAY RESURFACING Locations

Council Area	Road Name
Lisburn & Castlereagh	Kensington Park
	Largymore Drive
	Lansdowne Park
	Moneyreagh Road Phase 1
	Hornbeam Road
	Lilac Walk
	Linden Walk
	Johnston Park
	Carnreagh Road

NETWORK MAINTENANCE – ROUTINE MAINTENANCE REPORT

	Railway Street,Derriaghy
	A24 Carryduff Road
	Edentrillick Road
	Willow Gardens Footways
	Alder Close No 1 - 19
	Alder Close No 2 - end
	Hornbeam Rd No 2 - end
	River Rd Ho 220 - Ho 271
	River Rd Ho 206 - Ho 218
	Glenwood Footways

STRUCTURAL MAINTENANCE – DRAINAGE

Number of sites completed
14

DRAINAGE locations

Council Area	Road Name
Lisburn & Castlereagh	A26 Moira Road at Crewe Park Road
	Ballycolin Road
	Leathemstown Road
	Lough Road
	Lower Road
	Comber Road
	Quarterlands Road
	Hillhall Road
	Lowtown Road
	Mill Road
	Front Road
	Glen Road
	40 Ballykeel Road
	Knockbracken Road

STRUCTURAL MAINTENANCE – VERGE STRENGTHENING

Number of sites completed
4

VERGE STRENGTHENING locations

Council Area	Road Name
Lisburn & Castlereagh	Ivy Hill
	Bawnhill Road
	Ballynahinch Road
	Sheepwalk Road

STRUCTURAL MAINTENANCE – CARRIAGEWAY REFURBISHMENT

Number of sites completed
31

CARRIAGEWAY REFURBISHMENT Locations

Council Area	Road Name
Lisburn & Castlereagh	Magheralave Court cul de sac
	Magheralave Court
	Magheralave Grange Hse 45 to end
	Magheralave Grange Hse 41 to end
	Magheralave Grange
	Causeway End Park JCT Causeway End Rd
	Rathvarna Drive Cul De Sac No1
	Causeway End Park Hse No 6-20
	Rathvarna Drive Cul De Sac No2
	Rathvarna Park Cul De Sac No1
	Rathvarna Close Cul De Sac No1
	Drumard Drive jct KnockmoreRd
	Drumard Drive jct Rushmere Drive
	Knockburn Drive jct Knockmore Rd
	Knockburn Drive jct Knockburn Crescent
	Knockburn Avenue
	Haddington Hill
	Belmont Grove cul de Sac
	Drumbeg Drive Cul De Sac
	Maze Park
	Killeany Avenue
	Whitla Rd
	Cross Lane
	Magheralave Court Cul De Sac 3
	Laurel Way
	Rathvarna Drive
	Rathvarna Avenue
	Kilcorig Rd
	Branial Rd
	Dunygarton Rd
	Killynure Road West
	Leverogue Road

PLANNED WORKS 2023 – 2024

Structural Maintenance	Estimated Cost
	£5,414,000

STRUCTURAL MAINTENANCE – CARRIAGEWAY

RESURFACING – CARRIAGEWAY

Proposed	Type of scheme
12.80Km	Road Network
10.99 Km	Road Recovery

CARRIAGEWAY –locations

Council Area	Road Name
Lisburn & Castlereagh	A23 Moneyreagh Road, Moneyreagh
	Derriaghy Road, Milltown
	A24 Saintfield Road, Castlereagh (TRN Scheme)
	A24 Ballynahinch Road, Carryduff (TRN Scheme)
	Ashley Park, Carryduff*
	Brooklands Park/Avenue, Dundonald*
	Barnfield Road*
	Ballycrune Road*
	Mealough Road*
* Roads Recovery Fund Scheme	

STRUCTURAL MAINTENANCE – FOOTWAYS

FOOTWAY RESURFACING

Total length proposed
3.65Km

FOOTWAY locations

Council Area	Road Name
Lisburn & Castlereagh	Moneyreagh Road, Moneyreagh
	Derriaghy Road, Milltown
	Barnfield Rd, Milltown
	Ashley Park, Carryduff
	Brooklands Park/Avenue, Dundonald
	Glenwood Park, Dunmurry
	River Court, Dunmurry

STRUCTURAL MAINTENANCE – SURFACE DRESSING

SURFACE DRESSING

Number of sites proposed	Total area proposed
26	138367.50m2

SURFACE DRESSING locations

Council Area	Road Name
Lisburn & Castlereagh	White Lane
	Dunygarton Road
	Drumbane Road
	Lurganville Road
	Grovehill Road
	Jennys Lane
	Kilcorig Road
	Whinney Hill
	Lakeland Road
	Loughaghery Road
	Branial Road
	Glen Road
	Cabra Road
	Ballyworphy Road
	Cadger Road
	Knockbracken Road South
	Beechmount Road
	Leverogue Road
	Moss Road
	Woodvale Road
	Quarterlands Road
	Ravernet Road
	Dagger Road
	Stoneyford Road
	Lisnabilla Road

STRUCTURAL MAINTENANCE – DRAINAGE

DRAINAGE

Number of sites proposed
3

DRAINAGE locations

Council Area	Road Name
Lisburn & Castlereagh	Crewe Park Road
	Drumlough Road

Ballynahinch Road at Beattie’s Road

STRUCTURAL MAINTENANCE – VERGE STRENGTHENING

VERGE STRENGTHENING

Number of sites proposed
2

VERGE STRENGTHENING locations

Council Area	Road Name
Lisburn & Castlereagh	A3 Moira Road
	Edentrillick Road

STRUCTURAL MAINTENANCE – CARRIAGEWAY REFURBISHMENT

CARRIAGEWAY

Number of sites proposed	
6	

CARRIAGEWAY REFURBISHMENT locations

Council Area	Road Name
Lisburn & Castlereagh	Ashmount Gardens, Lisburn
	Soldierstown Road, Agahlee
	A49 Old Ballynahinch Road, Lisburn
	Glebe Road, Annahilt
	Dromore Street, Dromara
	Tullynacross Road, Lisburn

MAINTENANCE OPERATIONS - ROUTINE

COMPLETED WORKS 2022 – 2023

Grass Cutting

The grass verges on all rural roads and in urban areas were cut twice, with additional cutting carried out at sightlines as required.

Grass cutting completed

Total Length cut	3870.14 Km
Total m2 cut	754,884m2

NETWORK MAINTENANCE – ROUTINE MAINTENANCE REPORT

Defects

Section Office staff regularly inspect the local network for actionable defects in accordance with the Road Maintenance Guidelines. These guidelines classify the local roads according to traffic volume and establish corresponding deadlines for the repair of any defects identified.

Defect Count report

	Imports from VICII	R2,R3,R4 Awaiting Action	Works Order Prep	Works Order Issued	Referrals	Third Party Referral	Completed Defects	Archive	Others	Total
EASTERN DIVISION	10	44	7	6538	5647	23	21249	11646	4723	49887

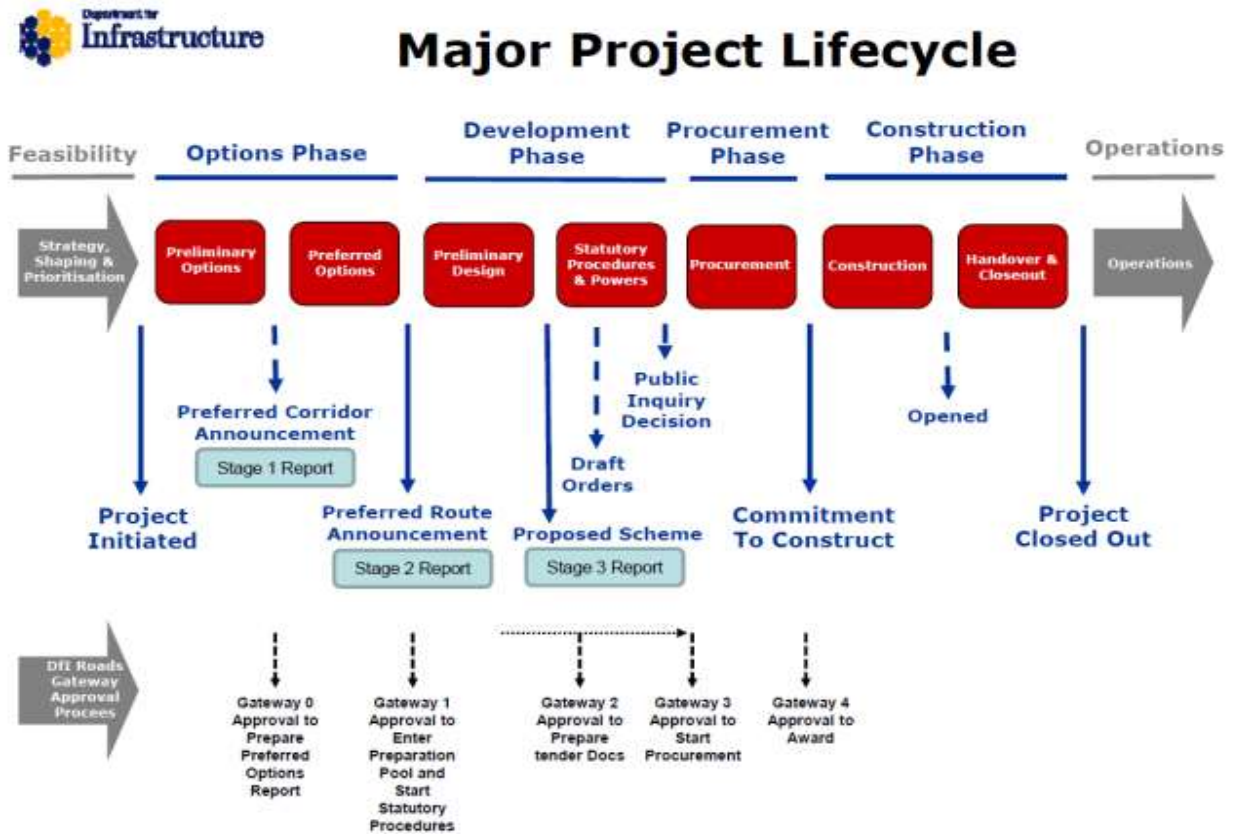
PUBLIC LIABILITY CLAIMS

DETAILS

Description	Detail
Total claims received in Eastern Division	693
- vehicular damage	425
- personal injury	244
- property damage	24
Total claims settled	383
Total claims rejected	364

6.0 MAJOR PROJECTS AND ACTIVE TRAVEL

[Major road improvements - inception to construction RSPPG E030v5 | Department for Infrastructure \(infrastructure-ni.gov.uk\)](#)



STRATEGIC ROAD IMPROVEMENTS**STRATEGIC ROAD IMPROVEMENTS****M1/A1 LINK AT SPRUCEFIELD****Scheme 1**

District Council area(s)	Lisburn Castlereagh City Council
Location	M1 and A1 in vicinity of Sprucefield
Scheme description	This scheme, will provide a high standard link between the M1 motorway and the A1. It will be of major benefit to strategic traffic in reducing journey times, by avoiding delays in the Sprucefield area.
Scheme length	Approx. 4km
Scheme estimated cost	TBC
Scheme website	M1/A1 Sprucefield Bypass Department for Infrastructure (infrastructure-ni.gov.uk)
Any related schemes?	It is intended that the proposal will also consider congestion at the junction on the A1 at Hillsborough.
Current stage	DfI Roads commissioned consultants to consider a range of options and an evaluation of all the viable options for capacity enhancement along this route. This first stage of this has been completed and the findings published in a Stage 1 Report, which determined route corridors within which further options would be examined. The Stage 1 Report was published in March 2011. Due to funding constraints, no further development work has been undertaken since then.
Current position	On 14 August 2023 the Department published a prioritised list of major road schemes that will continue to be progressed. No funding has been identified for this scheme. Any decision on its progression will be informed by the Department's emerging transport policies and plans and decisions by a future Minister.

A1 JUNCTIONS PHASE 2**Scheme 2**

Location	A1 between Hillsborough Roundabout and Loughbrickland
Scheme description	<p>This scheme will involve the construction of four grade separated junctions (flyovers) to facilitate the closing up of all openings in the central median and installation of a continuous central median concrete safety barrier, improving road safety for all road users on the A1.</p> <p>The grade separated junctions will be located at:</p> <ul style="list-style-type: none"> • Listullycurran Road • Gowdystown Road • Skeltons Road / Drumneath Road • Waringsford Road

STRATEGIC ROAD IMPROVEMENTS

	<p>In addition, the proposal includes the provision of a northbound on-slip at Castlewellan Road at Banbridge, a link between the existing underpass junction at Hillsborough Road, Dromore and Milebush Road and the closing of nine minor road junctions along this section of the A1. All other roads will then operate on a left in - left out basis. A number of Private Accesses onto the A1 are also proposed for closure.</p>
Scheme length	25km
Scheme estimated cost	£65-75m (currently under review)
Scheme website	A1 Junctions Phase 2 - overview Department for Infrastructure (infrastructure-ni.gov.uk)
Any related schemes?	A1 Hillsborough to Sprucefield
Current stage	<p>The Environmental Impact Assessment Report (EIAR) and draft Statutory Orders were published in March 2019 and the Public Inquiry into the scheme was held in March 2020. The Public Inquiry Inspector issued his report to the Department on 19 October 2020. Following the publication of the Departmental Statement on 28 January 2021, the Statutory Orders for the scheme were then made, with the Stopping Up (of Private Accesses) Order coming into operation on 24th June 2021 and the Direction Order on 16th July 2021.</p> <p>On-site works for the advance ground investigations and archaeological investigations are now complete.</p> <p>Work is currently being carried out on the preparation of the contract documents.</p>
Current position	<p>In August 2023 the Department published a prioritised list of major road schemes that will continue to be progressed, see link; Department publishes major roads prioritisation programme Department for Infrastructure (infrastructure-ni.gov.uk). There are a number of reasons why the prioritisation of projects currently in the pipeline was necessary, including the challenging budgetary position and constrained resources (in terms of finance and staff) and, importantly, the Department’s commitments under the Climate Change (NI) Act 2022.</p> <p>Transport policies and plans are currently being reviewed and updated to align with these commitments and this work will help define what major transport infrastructure projects should be included within any future major roads programme.</p> <p>Due to financial and resourcing pressures the Department can only deliver those road projects where there are identified alternative funding streams such as Flagship and City and Growth Deal projects. The A1J2 scheme however is identified within the prioritised list as a scheme which will continue to progress towards the next key decision on procurement, which will be informed by the Department’s emerging transport plans, the business case</p>

	<p>approval and a decision from a suitably empowered decision maker.</p> <p>Current work on the contract documents for A1J2 is to be concluded and a future decision on the subsequent progression of the scheme will be made once the Department’s emerging transport policies and plans have been developed to a sufficient stage, in particular the Regional Strategic Transport Network Transport Plan (RSTNTP).</p>
--	--

A1 HILLSBOROUGH TO SPRUCEFIELD

Scheme 3

Location	A1 between Hillsborough and Sprucefield
Scheme description	The potential closure of central median crossings and provision of central median barrier.
Scheme length	2km
Scheme estimated cost	TBC
Scheme website	None
Any related schemes?	A1 Junctions Phase 2
Current stage	Feasibility stage. A feasibility study has been carried out on the section of the A1 between Hillsborough and Sprucefield. This was to consider the potential closure of central median crossings and provision of central median barrier where possible. The outcome of this will be considered further.
Current position	On 14 August 2023 the Department published a prioritised list of major road schemes that will continue to be progressed. No funding has been identified for this scheme. Any decision on its progression will be informed by the Department’s emerging transport policies and plans and decisions by a future Minister.

ACTIVE TRAVEL

Active Travel teams are responsible for making walking, wheeling and cycling the preferred choice for everyone to travel in Northern Ireland. More information on Active Travel can be found [here](#).

COMPLETED WORKS 2022 – 2023

ACTIVE TRAVEL

Total number of sites	Total cost
1	£340,433.00

Pedestrian Measures completed

Road Name	Scheme Description	Status
Millreagh Estate Linkage to Upper Newtownards Road -	Cycle and Pedestrian access route / ramp	Feasibility Study Complete – No Further Action due to cost.

Cycling Measures completed

Road Name	Scheme Description	Status
As Above		

PLANNED WORKS 2023 – 2024

ACTIVE TRAVEL

Total number of sites	Estimated cost
2	£380,000.00

Pedestrian Measures planned

Road Name	Scheme Description	Status
Crumlin to Glenavy B12	Shared use path	Design Stage
West Belfast Greenway	Dunmurry / Kilmakee link to Lagan Tow Path	Feasibility Stage

Cycling Measures planned

Road Name	Scheme Description	Status
As Above		

USEFUL NUMBERS

Out of Hours Emergencies

Telephone: 0300 200 7899

Flooding Incident Line

Telephone: 0300 200 0100

Street Lighting Faults

Telephone: 0300 200 7899

Website: www.nidirect.gov.uk/services/report-street-light-fault

General Enquiries

email: DflRoads.Eastern@infrastructure-ni.gov.uk

Website: www.infrastructure-ni.gov.uk

Telephone: 0300 200 7899

Blue Badge Unit

Provides on-street parking concessions for Badge Holders who travel either as drivers or passengers.

Contact: BBU PO Box 64 Enniskillen BT74 0BL

email: bluebadges@infrastructure-ni.gov.uk

Telephone: 0300 200 7818

Parking Enforcement Processing Unit

Processes all penalty notices under Decriminalised Parking Enforcement.

Contact: Roads.Parking@infrastructure-ni.gov.uk

Website: <https://www.nidirect.gov.uk/articles/parking-enforcement>

Telephone: 0300 200 7895
