



Department for

Infrastructure

An Roinn

Bonneagair

www.infrastructure-ni.gov.uk

TRAFFIC and TRAVEL INFORMATION

2020

INCORPORATING

ANNUAL TRAFFIC CENSUS

AND

VARIATIONS IN TRAFFIC FLOW



CONTENTS

INTRODUCTION

PART 1 – ANNUAL TRAFFIC CENSUS REPORT 2020

General information relating to Part 1 – Traffic Census	5
Table 1: Site location details – (listed by Road Number)	7-11
Table 2: 2020 Data availability for each counter point (listed by Census Point Number)	12-16
Table 3: 2020 Annual Average Daily Traffic Flow (AADT) (7 day) and Mean Weekday Peak Hour Flows (5 day) – summary of tables 4 & 5	17-22
Table 4: 7 day Annual Average Directional Flows and Percentage Composition of Traffic – EURO 6 sites	23-28
Table 5: 5 day Directional Flow Information	29-31

PART 2 – VARIATIONS IN TRAFFIC FLOW

General Information Relating to Part 2 – Variations in Traffic Flow	33
Table 6: Annual Average Daily Traffic (7 day) from 2010 – 2020	34-36
Table 7: Yearly variations in AADT (7 day) from 2016 - 2020	37-41
Table 8: Variation in Traffic Flow (7 day) between 2019 and 2020	42

Appendix A – Location of Historic Counter Sites

Table 9: Location of Historic Counter Sites (listed by Road Number)	44-55
---	-------

Appendix B – Location of Census Points

Figure 1: Londonderry Area	58
Figure 2: Coleraine Area	58
Figure 3: Enniskillen Area	59
Figure 4: Location of Census Points and Annual Average Daily Traffic Flows for Northern Ireland	60

Introduction

This Traffic and Travel Information Report is a composite document, comprising the following:

Part 1: Traffic Census data.

Part 2: Information on variations in traffic flows.

The collection of traffic data contributes to the effective management of the road network by providing information that assists in the allocation of DfI Roads' financial resources, the development of future proposals for the network and the planning of Winter Service provision.

In 2015, Traffic data was collected from 351 automatic traffic counting sites located throughout the road network in Northern Ireland. Since then resource limitations have necessitated a reduction in the number of permanent traffic counters, retaining only those that are fully automated. There were a total of **82** such sites operational across Northern Ireland in 2020.

These census points are located on both the main and minor road networks. Information is based on the **best available** data gathered during the course of the year. It should be noted that, due to the Covid-19 pandemic, traffic figures are generally much lower than a typical year. The 5-day & 7-day AADT peak hour flows contained within this report can therefore not be considered as representative of a typical year.

Any enquiries about this report should be addressed to:

Head of Telematics
DfI Roads – Eastern Division
Traffic Information and Control Centre
1b Airport Road
Belfast
BT3 9DY

PART 1

**ANNUAL TRAFFIC CENSUS REPORT
2020**

General Information relating to Part 1 – Traffic Census

1.1 Part 1 of this report contains detailed information relating to traffic flow collated from the 82 census points with 2020 data on the road network in Northern Ireland.

1.2 DfI Roads historically classified vehicles using the DoENI 5 classification scheme. This classification scheme was specifically designed for the Department for Environment (DoE), now DfI Roads, in Northern Ireland and is therefore not directly comparable with any other class scheme used in the rest of the UK and further afield. To ensure the classification data collected is available in a more widely recognised format DfI Roads took the decision to start collecting data using the EURO 6 classification scheme. From 2017-2019 only 18 sites classified vehicles using the DoENI 5 classification scheme and the remaining sites classified vehicles using the EURO 6 classification scheme. From 2020 onwards all permanent traffic counters classify vehicles using the EURO 6 classification scheme.

A summary of the two classification schemes are given below:-

DoENI5 CLASS SCHEME

Class 1	Car, Car & Trailer and Light Van
Class 2	Medium Goods Van and Minibus (<8.7m)
Class 3	Rigid Heavy Goods Vehicle (>8.7m)
Class 4	Articulated Vehicle and Rigid Heavy Goods Vehicle + Trailer
Class 5	Bus and Coach

EURO 6 CLASS SCHEME

Class 1	Motorbike
Class 2	Car / Van
Class 3	Car / Van + Trailer
Class 4	Rigid HGV
Class 5	Articulated HGV
Class 6	Bus and Coach

1.3 Percentage HGV (HGV%) for the EURO 6 Classification scheme is based on Classes 4 to 6 inclusive.

1.4 The following notes are intended as clarification of the Traffic Census information contained in Tables 1, 2, 3 and 4.

- (a) Table 1 is included as a “location finder”. The sites are listed in route number order, (i.e. the road classification number).
- (b) Table 2 lists the sites by Census Point (CP) number and gives a breakdown of the data available for each site in 2020.
- (c) Tables 3, 4 and 5 provide the traffic data arranged by Census Point number. These tables also include route numbers and site locations.
- (d) Traffic flow volumes greater than 10 are rounded to the nearest multiple of 10.
- (e) 24 hour Annual Average Daily Traffic (AADT) flows are calculated using data from the 7 day week.
- (f) “Mean Peak Hour Flow” is the average peak hour flow based on a 5 day week comprising Monday to Friday inclusive.
- (g) Within the tables the term “Channel” relates to the direction of flow of the traffic.
- (h) Some cells within the tables are marked “-”. This means that either the data was considered to be unreliable, no information was available at that site, or the site is unidirectional. Unidirectional sites have a “N/A” in Table 1 to represent the non-existent second channel.
- (i) Maps showing the locations of the census points are included in Appendix B of this report.

1.5 Information relating to sites that are no longer operational but may have useful historic data is included in Appendix A.

Table 1 - Site Location Details (listed by Road Number)

This table is included as a “location finder”. The sites are listed by route number order, (i.e. the road classification number).

Route	CP No	Divn.	Location	Channel 1	Channel 2	Easting	Northing
A1	405	South	Dublin Road, Newry	To Border	To Newry	308331	323116
A1	410	South	Dromore – Banbridge, South of Old Banbridge Road	To Dromore	To Banbridge	318980	352194
A1	419	South	Loughbrickland – Newry, North of Beechill Road	To Newry	To Belfast	309501	333630
A1	522	East	Lisburn - Hillsborough (at Harry's Road)	To Lisburn	To Hillsborough	325004	360426
A1	536	South	A1 Newry, North of A27 Junction	To Newry	To Belfast	307243	330343
A1	794	East	Lisburn Road at Dunluce Avenue	Northbound	Southbound	333093	372653
A2	117	East	Whitehead - Carrickfergus	To Carrick	To Whitehead	346847	391041
A2	119	North	Larne - Ballygalley, at Blackcave Tunnel	To Larne	To Carnlough	340390	404474
A2	209	East	Sydenham By-Pass, at George Best Belfast City Airport	To Belfast	From Belfast	337289	375624
A2	311	North	Coleraine - Portstewart, North of B185	To Coleraine	To Portstewart	284272	434252
A2	312	North	Portrush – Portstewart, at Portrush	To Portrush	To Portstewart	284124	439585
A2	332	North	Limavady – Magilligan, North of B69	To Limavady	To Coleraine	269340	434142
A2	376	North	A2 Ballykelly Road, Limavady	To Londonderry	To Coleraine	264513	422865
A2	392	North	Duke Street, Londonderry	To Limavady	N/A	244025	416224
A2	443	South	Rostrevor Road, Warrenpoint, Co. Down	To Warrenpoint	To Rostrevor	316494	318305
A2	502	East	Belfast - Bangor, at Cultra, East of Folk Museum	To Belfast	To Bangor	342339	380522
A2	510	South	Donaghadee - Millisle, at Ballyvester	To Donaghadee	To Millisle	359320	378021
A2	793	East	Shore Road South of Jordantown Road	Northbound	Southbound	336391	383399
A2	907	East	Belfast Road, Bangor Side of Ballyrobert Road Junction	To Belfast	N/A	345170	380735
A2	908	East	Belfast Road, Belfast Side of Ballyrobert Road Junction	To Belfast	N/A	344820	380944

Traffic and Travel Information 2020

Route	CP No	Divn.	Location	Channel 1	Channel 2	Easting	Northing
A2	910	East	Bangor Road Cultra, Before Whinney Hill	To Belfast	N/A	341388	379957
A3	235	East	Moira Road, Lisburn, West of Lissue Industrial Estate	To Lisburn	To Moira	322801	363099
A3	442	South	Monaghan Road, Middletown, Co Armagh	To Middletown	To Armagh	277662	338821
A3	670	West	Clones Road Cavan side of B533	To Clones	To Cavan	242820	319936
A4	615	West	Enniskillen – Belcoo (East of Letterbreen near Moybrone/ Station Road Cross Roads)	To Enniskillen	To Belcoo	218548	340453
A4	629	West	Enniskillen - Fivemiletown (West of B514 at Cultiagh)	To Enniskillen	To Fivemiletown	228380	341079
A5	391	North	Victoria Road, Londonderry, at Bolies	To City Centre	To Newbuildings	243136	415386
A5	610	West	Omagh – Ballygawley, South of B122 (past junction of U1306)	To Omagh	To Ballygawley	247104	369571
A5	645	West	Omagh By-Pass, at footbridge	To Enniskillen	To Ballygawley	244879	372257
A5	648	West	Strabane By-Pass (Barnhill Road West of Derry Road)	To Londonderry	To Omagh	234747	398964
A5	660	West	Omagh – Ballygawley, South of Crevenagh Road Roundabout	To Omagh	To Ballygawley	246367	370901
A5	675	West	A5 Tullyvar Road, Ballygawley	To Ballygawley	To Aughnacloy	263538	356195
A6	102	North	Toome - Randalstown, at Drumbeg	To Toome	To Randalstown	300353	389975
A6	122	West	Castledawson – Dungiven (North West of A31 near roundabout)	To Castledawson	To Dungiven	291603	392792
A6	149	East	Belfast Road, Mallusk	To Mallusk	To Templepatrick	323667	385747
A6	151	North	Between Templepatrick Roundabout & Kilmakee Roundabout	To International Airport	To Ballyclare	322365	385329
A6	306	North	Dungiven - Londonderry, East of B74	To Dungiven	To Londonderry	268217	409441
A6	923	North	Toome to Randalstown	Northbound	Southbound	300119	390016
A7	513	South	Belfast Road, Downpatrick, at Quoile	To Downpatrick	To Belfast	348079	345569
A8	135	East	Larne - Ballynure, at Craiginorne	To Larne	From Larne	335000	398270
A8	207	East	Sandyknowes (Junction 4) – Corr's Corner	To Belfast	From Belfast	330644	383870
A8	212	East	North of Corr's Corner, on dual carriageway	To Belfast	From Belfast	330959	385127

Traffic and Travel Information 2020

Route	CP No	Divn.	Location	Channel 1	Channel 2	Easting	Northing
A12	213	East	Westlink, Belfast, South of Roden Street	To M2	To M1	332421	373465
A12	290	East	Westlink, Clifton Street, towards M1	Main Carriageway	On Slip	333512	375123
A12	291	East	Westlink, Clifton Street, towards M2	Main Carriageway	Off Slip	333513	375162
A20	444	South	Portaferry Road, Kircubbin, Co. Down	To Kircubbin	To Newtownards	359411	364538
A20	918	East	Upper Newtownards Road, Belfast at bus-stop opposite Summerhill Avenue (Outbound)	To Newtownards	N/A	339884	373982
A20	921	East	Upper Newtownards Road, Belfast at Stormont entrance (Inbound)	To Belfast	N/A	339623	373953
A21	507	South	Bangor Road, Newtownards	To Bangor	To Newtownards	349852	376100
A22	512	South	Comber - Killyleagh, at Comber	To Killyleagh	To Comber	346309	368460
A24	800	East	Ormeau Road at Knockbreda Park	To City Centre	To Carryduff	334969	370997
A26	109	North	Nutts Corner - Moira, at Nutts Corner	To Nutts Corner	To Moira	319528	377642
A26	310	North	Coleraine - Ballymoney, South East of Ring Road	To Coleraine	To Belfast	287079	430909
A28	418	South	Armagh - Newry, at Markethill	To Newry	To Armagh	295758	340565
A29	308	North	Coleraine - Limavady, at Fernlester	To Coleraine	To Limavady	283679	430184
A29	309	North	Coleraine - Garvagh, South of B66	To Coleraine	To Garvagh	284700	419770
A29	325	North	Coleraine Ring Road, between A29 - B185	To Portstewart	To Portrush Road Roundabout	285080	435171
A31	123	West	Moneymore Road, Magherafelt	To Magherafelt	To Moneymore	289159	389759
A31	128	West	Castledawson - Magherafelt (South West of Bowmans Road)	To Magherafelt	To Castledawson	291431	392200
A32	617	West	Enniskillen - Irvinestown (North of Cherrymount Roundabout)	To Enniskillen	From Enniskillen	223755	345997
A32	665	West	Enniskillen Road, Irvinestown	To Enniskillen	To Irvinestown	224369	357090
A34	612	West	Lisnaskea - Maguiresbridge (Lisnagole Road near St Mary's Primary School)	To Maguiresbridge	To Lisnaskea	234952	337944
A36	131	North	Ballymena - Lame, at Moorfield	To Ballymena	To Lame	315257	400640
A44	318	North	Ballycastle - Armoy, East of B67	To Ballycastle	To Coleraine	309639	439472

Traffic and Travel Information 2020

Route	CP No	Divn.	Location	Channel 1	Channel 2	Easting	Northing
A47	674	West	Boa Island Road, Belleek	To Belleek	To Boa Island	194765	359419
A48	508	South	Donagadee Road, Newtownards	To Newtownards	To Donaghadee	349949	374578
A52	789	North	Ballyutoag Road, Co. Antrim	Southbound	Northbound	325786	378595
A52	797	East	Crumlin Road, Belfast side Horseshoe bend	To Belfast	To Crumlin	331181	378163
A52	799	East	Crumlin Road at Ingledene Park	To City Centre	To Crumlin	331339	376060
A54	321	North	Coleraine - Kilrea, South of A29	To Coleraine	To Kilrea	285114	430494
A55	221	East	Upper Knockbreda Road, Belfast	To Saintfield Road	To Castlereagh Road	335838	370822
A55	922	East	Knock Road, Castlereagh, at Shandon Park	To Upper Knockbreda Road	To Upper Newtownards Road	338135	372569
A515	353	North	Foyle Bridge, Londonderry	To Culmore	To Caw	245907	418509
B39	159	North	Seven Mile Straight, Ballyrobin	To Loanends	To Antrim	319936	383022
B52	632	West	Garrison - Belleek (South of Farancassidy Cross Roads at Brollagh School)	To Belleek	To Garrison	194322	356324
B62	315	North	Ballymoney - Portrush, North of A26	To Ballymoney	To Portrush	294051	427416
B64	331	North	Dungiven - Garvagh, at Dungiven	To Dungiven	To Garvagh	269358	409928
B95	101	North	Antrim – M2, at Greystone Road	To Antrim	To Rathbeg	317801	386871
B101	234	East	Pond Park Road, Lisburn	To Lisburn	To International Airport	324772	366974
C297	532	East	Ballynahinch Road, Lisburn	To Lisburn	From Lisburn	327652	363284
M1	201	East	Broadway (Junction 1) - Stockman's Lane (Junction 2)	To Belfast	From Belfast	331678	372509
M1	227	East	Stockman's Lane Junction (above roundabout)	To Belfast	From Belfast	330710	371218
M1	230	East	Blacks Road on – slip (Junction 3)	One Way Traffic Flow	N/A	329697	369723
M1	231	East	Blacks Road off – slip (Junction 3)	One Way Traffic Flow	N/A	329791	369673
M1	520	East	Blacks Road (Junction 3) – Saintfield Road (Junction 6)	To Belfast	From Belfast	328385	364375
M2	110	North	Rathbeg (Junction 6) – Dunsilly (Junction 1 on M22)	To Belfast	To Toome	317903	388344

Traffic and Travel Information 2020

Route	CP No	Divn.	Location	Channel 1	Channel 2	Easting	Northing
M2	132	North	Rathbeg (Junction 6) – Templepatrick (Junction 5)	To Belfast	To Toome	320979	387345
M2	202	East	Fortwilliam Interchange Inbound (Junction 1)	Main Carriageway	N/A	334392	377404
M2	203	East	Fortwilliam Interchange Outbound (Junction 1)	Main Carriageway	N/A	334437	378014
M2	204_1	East	Greencastle (Junction 2) – Sandyknowes (Junction 4)	From Belfast	N/A	332921	381233
M2	204_2	East	Greencastle (Junction 2) – Sandyknowes (Junction 4)	To Belfast	N/A	332938	381266
M2	205	East	Sandyknowes (Junction 4) – Templepatrick (Junction 5)	To Belfast	From Belfast	326856	385319
M5	206	East	Greencastle (Junction 2) - Whiteabbey	To Belfast	From Belfast	334643	379556
M22	111	North	Dunsilly (Junction 1) – Ballygrooby (Junction 2)	To Belfast	To Toome	311807	389739

Table 2 – 2020 Data availability for each counter point (listed by Census Point Number)

This table contains information on the availability of data with the sites listed by Census Point Number.

Table 2 – 2020 Data availability for each counter point (listed by Census Point Number)				
CP No	Route	Divn.	Location	Data Availability
101	B95	North	Antrim - M2, at Greystone Road	2 May-8 Jun, 13-17 Jun
102	A6	North	Toome - Randalstown, at Drumbeg	30 Apr-14 Oct, 29 Oct-31 Dec
109	A26	North	Nutts Corner - Moira, at Nutts Corner	No data
110	M2	North	Rathbeg (Junction 6) – Dunsilly (Junction 1 on M22)	Full Year
111	M22	North	Dunsilly (Junction 1) – Ballygrooby (Junction 2)	Full Year
117	A2	East	Whitehead - Carrickfergus	21 May-16 Aug, 22-29 Dec
119	A2	North	Larne - Ballygalley, at Blackcave Tunnel	1 Jan-20 Sept
122	A6	West	Castledawson – Dungiven (North West of A31 near roundabout)	Full Year
123	A31	West	Moneymore Road, Magherafelt	Full Year
128	A31	West	Castledawson - Magherafelt (South West of Bowmans Road)	1 Jan-28 Nov
131	A36	North	Ballymena - Larne, at Moorfield	Full Year
132	M2	North	Rathbeg (Junction 6) – Templepatrick (Junction 5)	Full Year
135	A8	East	Larne - Ballynure, at Craiginome	Full Year
149	A6	East	Belfast Road, Mallusk	No 2020 data
151	A6	North	Between Templepatrick Roundabout & Kilmakee Roundabout	No 2020 data
159	B39	North	Seven Mile Straight, Ballyrobin	1 Jan-10 Dec
201	M1	East	Broadway (Junction 1) – Stockman's Lane (Junction 2)	Full Year
202	M2	East	Fortwilliam Interchange Inbound (Junction 1)	Full Year

Table 2 – 2020 Data availability for each counter point (listed by Census Point Number)				
CP No	Route	Divn.	Location	Data Availability
203	M2	East	Fortwilliam Interchange Outbound (Junction 1)	Full Year
204_1	M2	East	Greencastle (Junction 2) – Sandyknowes (Junction 4) (From Belfast)	Full Year
204_2	M2	East	Greencastle (Junction 2) – Sandyknowes (Junction 4) (To Belfast)	Full Year
205	M2	East	Sandyknowes (Junction 4) – Templepatrick (Junction 5)	1 Jan-1 Mar, 5 Mar-31 Dec
206	M5	East	Greencastle (Junction 2) - Whiteabbey	Full Year
207	A8	East	Sandyknowes (Junction 4) – Corr's Comer	Full Year
209	A2	East	Sydenham By-Pass, at George Best Belfast City Airport	25 Jan-13 Mar, 16 Mar-22 Aug
212	A8	East	North of Corr's Comer, on dual carriageway	1 Jul-31 Dec
213	A12	East	Westlink, Belfast, South of Roden Street	Full Year
221	A55	East	Upper Knockbreda Road, Belfast	25 Jan-6 Oct
227	M1	East	Stockman's Lane Junction (above roundabout)	Full Year
230	M1	East	Blacks Road on – slip (Junction 3)	Full Year
231	M1	East	Blacks Road off – slip (Junction 3)	Full Year
234	B101	East	Pond Park Road, Lisburn	1 Jan-13 Dec, 22-31 Dec
235	A3	East	Moira Road, Lisburn, West of Lissue Industrial Estate	Full Year
290	A12	East	Westlink, Clifton Street, towards M1	Full Year
291	A12	East	Westlink, Clifton Street, towards M2	Full Year
306	A6	North	Dungiven - Londonderry, East of B74	30 Mar-31 Dec
308	A29	North	Coleraine - Limavady, at Fernlester	22 Apr-21 Nov
309	A29	North	Coleraine - Garvagh, South of B66	1 Jan-31 Dec
310	A26	North	Coleraine - Ballymoney, South East of Ring Road	26 Jan-6 Aug, 12 Aug-31 Oct, 9-26 Nov, 24-31 Dec

**Table 2 – 2020 Data availability for each counter point
(listed by Census Point Number)**

CP No	Route	Divn.	Location	Data Availability
311	A2	North	Coleraine - Portstewart, North of B185	30 Mar-31 Dec
312	A2	North	Portrush – Portstewart, at Portrush	1 Apr-31 Dec
315	B62	North	Ballymoney - Portrush, North of A26	22 Apr-6 May, 21 May-31 Dec
318	A44	North	Ballycastle - Armoy, East of B67	No 2020 data
321	A54	North	Coleraine - Kilrea, South of A29	Full Year
325	A29	North	Coleraine Ring Road, between A29 - B185	No 2020 data
331	B64	North	Dungiven - Garvagh, at Dungiven	Full Year
332	A2	North	Limavady – Magilligan, North of B69	1-13 Apr, 6 May-10 Nov, 13-20 Nov, 11-31 Dec
353	A515	North	Foyle Bridge, Londonderry	No 2020 data
376	A2	North	A2 Ballykelly Road, Limavady	21 Apr-7 Jun, 18 Jul-1 Aug, 9 Aug-17 Sep, 23 Sep-31 Dec
391	A5	North	Victoria Road, Londonderry, at Bolies	No 2020 data
392	A2	North	Duke Street, Londonderry (To Limavady)	5 Apr-15 May, 25 May-18 Jun
405	A1	South	Dublin Road, Newry	1 Jan-22 Jul, 9-23 Aug, 29 Aug-15 Oct, 21 Oct-31 Dec
410	A1	South	Dromore – Banbridge, South of Old Banbridge Road	1 Jan-27 Sep
418	A28	South	Armagh - Newry, at Markethill	No 2020 data
419	A1	South	Loughbrickland – Newry, North of Beechill Road	Full Year
442	A3	South	Monaghan Road, Middletown, Co Armagh	1 Jan-29 Feb, 24 Apr-20 Dec
443	A2	South	Rostrevor Road, Warrenpoint, Co. Down	1 Jan-1 Jun, 22 Sep-7 Oct
444	A20	South	Portaferry Road, Kircubbin, Co. Down	Full Year
502	A2	East	Belfast - Bangor, at Cultra, East of Folk Museum	3 Jan-14 Mar, 21 Mar-16 May, 21 May- 5 Aug, 27 Aug-4 Oct, 5 Nov-31 Dec
507	A21	South	Bangor Road, Newtownards	Full Year

**Table 2 – 2020 Data availability for each counter point
(listed by Census Point Number)**

CP No	Route	Divn.	Location	Data Availability
508	A48	South	Donagadee Road, Newtownards	1-7 Jan, 11 Jan-17 Nov
510	A2	South	Donaghadee - Millisle, at Ballyvester	Full Year
512	A22	South	Comber - Killyleagh, at Comber	Full Year
513	A7	South	Belfast Road, Downpatrick, at Quoile	Full Year
520	M1	East	Blacks Road (Junction 3) – Saintfield Road (Junction 6)	1 Jan-3 Jul, 28 Jul-8 Sep
522	A1	East	Lisburn - Hillsborough (at Harry's Road)	No 2020 data
532	C297	East	Ballynahinch Road, Lisburn	8 Feb-12 Oct, 15 Oct-31 Dec
536	A1	South	A1 Newry, North of A27 Junction	22 Jan-31 Dec
610	A5	West	Omagh – Ballygawley, South of B122 (past junction of U1306)	Full Year
612	A34	West	Lisnaskea - Maguiresbridge (Lisnagole Road near St Mary's Primary School)	Full Year
615	A4	West	Enniskillen – Belcoo (East of Letterbreen near Moybrone/ Station Road Cross Roads)	Full Year
617	A32	West	Enniskillen - Irvinestown (North of Cherrymount Roundabout)	Full Year
629	A4	West	Enniskillen - Fivemiletown (West of B514 at Cultiagh)	1 Jan-23 Nov, 3-31 Dec
632	B52	West	Garrison - Belleek (South of Farancassidy Cross Roads at Brollagh School)	30 Jan-31 Oct
645	A5	West	Omagh By-Pass, at footbridge	No 2020 data
648	A5	West	Strabane By-Pass (Barnhill Road West of Derry Road)	1 Jan-30 May, 17-26 Jun, 1-8 Jul
660	A5	West	Omagh – Ballygawley, South of Crevenagh Road Roundabout	Full Year
665	A32	West	Enniskillen Road, Irvinestown	No 2020 data
670	A3	West	Clones Road Cavan side of B533	1 Jan-8 Dec
674	A47	West	Boa Island Road, Belleek	1 Jan-10 Jul, 12 Aug-31 Dec
675	A5	West	A5 Tullyvar Road, Ballygawley	Full Year

**Table 2 – 2020 Data availability for each counter point
(listed by Census Point Number)**

CP No	Route	Divn.	Location	Data Availability
789	A52	North	Ballyutoag Road, Co. Antrim	Full Year
793	A2	East	Shore Road South of Jordanstown Road	Full Year
794	A1	East	Lisburn Road at Dunluce Avenue	1 Jan-18 May, 18 Jun-6 Dec, 20-31 Dec
797	A52	East	Crumlin Road, Belfast side Horseshoe bend	1 Jan-30 Jul, 8-24 Aug, 13 Oct-16 Nov, 22 Nov-29 Dec
799	A52	East	Crumlin Road at Ingledene Park	Full Year
800	A24	East	Ormeau Road at Knockbreda Park	8 Feb-31 May, 13 Jun-31 Dec
907	A2	East	Belfast Road, Bangor Side of Ballyrobert Road Junction	Full Year
908	A2	East	Belfast Road, Belfast Side of Ballyrobert Road Junction	No 2020 data
910	A2	East	Bangor Road Cultra, Before Whinney Hill	7 Feb-31 Dec
918	A20	East	Upper Newtownards Road, Belfast at bus-stop opposite Summerhill Avenue (Outbound)	1 Jan-19 May, 12-21 Jun, 26 Jun-31 Dec
921	A20	East	Upper Newtownards Road, Belfast at Stormont entrance (Inbound)	Full Year
922	A55	East	Knock Road, Castlereagh, at Shandon Park	Full Year
923	A6	North	Toome to Randalstown	1 Jan-8 Jul, 9 Oct-31 Dec

Table 3 - 2020 Annual Average Daily Traffic Flow (AADT) (7 day) and Mean Weekday Peak Hour Flows (5 day) – summary of tables 4 & 5

This table contains the Average Annual Daily Traffic (AADT) flows (7 day) based on traffic flows over the seven day week and the percentage of Heavy Goods Vehicles (%HGV) for each site, (see Table 4 for a breakdown by class). The table also contains the weekday average peak hour flows (5 day) and the time that the peak hours commence. The flows are for both directions of travel combined. The sites are listed in order of Census Point Number for ease of reference.

Table 3 – 2020 Annual Average Daily Traffic Flow (AADT) (7 day) and Mean Weekday Peak Hour Flows (5 day)								
C P No.	ROUTE No.	LOCATION	7 day flows		5 day flows			
			24 HR AADT	% HGV	MEAN PEAK HOUR (HOUR STARTING - WEEKDAYS)			
					AM	Start	PM	Start
101	B95	Antrim - M2, at Greystone Road	4,910	9.6	380	07:00	520	15:00
102	A6	Toome - Randalstown, at Drumbeg	1,410	18.0	110	08:00	140	17:00
109	A26	Nutts Corner - Moira, at Nutts Corner	-	-	-	-	-	-
110	M2	Rathbeg (Junction 6) – Dunsilly (Junction 1 on M22)	35,220	14.2	3,290	08:00	3,580	16:00
111	M22	Dunsilly (Junction 1) – Ballygrooby (Junction 2)	17,770	16.2	1,780	07:00	1,850	16:00
117	A2	Whitehead - Carrickfergus	6,690	3.9	480	11:00	590	14:00
119	A2	Larne - Ballygalley, at Blackcave Tunnel	2,700	2.8	200	11:00	260	15:00
122	A6	Castledawson – Dungiven (North West of A31 near roundabout)	11,990	13.6	930	08:00	1,150	16:00
123	A31	Moneymore Road, Magherafelt	5,830	4.8	500	08:00	530	15:00
128	A31	Castledawson - Magherafelt (South West of Bowmans Road)	9,090	5.8	630	11:00	750	15:00
131	A36	Ballymena - Larne, at Moorfield	4,340	15.7	410	08:00	420	17:00
132	M2	Rathbeg (Junction 6) – Templepatrick (Junction 5)	37,850	13.4	3,480	08:00	3,820	16:00
135	A8	Larne - Ballynure, at Craiginorne	1,570	9.3	120	08:00	140	16:00

Table 3 – 2020 Annual Average Daily Traffic Flow (AADT) (7 day) and Mean Weekday Peak Hour Flows (5 day)

C P No.	ROUTE No.	LOCATION	7 day flows		5 day flows			
			24 HR AADT	% HGVS	MEAN PEAK HOUR (HOUR STARTING - WEEKDAYS)			
					AM	Start	PM	Start
149	A6	Belfast Road, Mallusk	-	-	-	-	-	-
151	A6	Between Templepatrick Roundabout & Kilmakee Roundabout	-	-	-	-	-	-
159	B39	Seven Mile Straight, Ballyrobin	2,390	6.5	260	08:00	240	16:00
201	M1	Broadway (Junction 1) – Stockman's Lane (Junction 2)	54,960	9.9	6,520	08:00	6,410	16:00
202	M2	Fortwilliam Interchange Inbound (Junction 1)	40,570	8.5	4,310	07:00	3,000	16:00
203	M2	Fortwilliam Interchange Outbound (Junction 1)	41,210	8.7	2,820	08:00	4,730	16:00
204-1	M2	Greencastle (Junction 2) – Sandyknowes (Junction 4) (From Belfast)	28,330	10.1	2,180	08:00	3,190	16:00
204-2	M2	Greencastle (Junction 2) – Sandyknowes (Junction 4) (To Belfast)	28,710	14.0	3,190	07:00	2,180	17:00
205	M2	Sandyknowes (Junction 4) – Templepatrick (Junction 5)	38,230	12.4	3,330	08:00	3,750	16:00
206	M5	Greencastle (Junction 2) - Whiteabbey	26,990	4.9	2,400	08:00	2,590	16:00
207	A8	Sandyknowes (Junction 4) – Corr's Corner	13,780	16.5	1,300	08:00	1,370	16:00
209	A2	Sydenham By-Pass, at George Best Belfast City Airport	39,900	7.0	3,140	08:00	3,760	16:00
212	A8	North of Corr's Corner, on dual carriageway	16,050	10.9	1,340	08:00	1,550	17:00
213	A12	Westlink, Belfast, South of Roden Street	58,460	14.7	6,770	08:00	6,780	16:00
221	A55	Upper Knockbreda Road, Belfast	24,070	3.3	1,960	08:00	2,260	16:00
227	M1	Stockman's Lane Junction (above roundabout)	38,650	24.0	5,070	08:00	5,370	16:00
230	M1	Blacks Road on – slip (Junction 3)	18,150	4.0	1,810	08:00	1,390	14:00
231	M1	Blacks Road off – slip (Junction 3)	16,090	5.3	1,020	11:00	1,560	16:00
234	B101	Pond Park Road, Lisburn	5,820	9.0	540	08:00	610	17:00
235	A3	Moir Road, Lisburn, West of Lissue Industrial Estate	9,730	8.5	830	08:00	870	16:00

Table 3 – 2020 Annual Average Daily Traffic Flow (AADT) (7 day) and Mean Weekday Peak Hour Flows (5 day)

C P No.	ROUTE No.	LOCATION	7 day flows		5 day flows			
			24 HR AADT	% HGV	MEAN PEAK HOUR (HOUR STARTING - WEEKDAYS)			
					AM	Start	PM	Start
290	A12	Westlink, Clifton Street, towards M1	35,760	12.9	2,990	07:00	2,660	15:00
291	A12	Westlink, Clifton Street, towards M2	40,830	9.7	2,940	08:00	3,490	16:00
306	A6	Dungiven - Londonderry, East of B74	12,310	13.8	850	08:00	1,120	17:00
308	A29	Coleraine - Limavady, at Fernlester	14,700	8.5	1,030	08:00	1,330	16:00
309	A29	Coleraine - Garvagh, South of B66	4,760	9.9	370	08:00	440	16:00
310	A26	Coleraine - Ballymoney, South East of Ring Road	12,950	6.4	1,110	08:00	1,250	17:00
311	A2	Coleraine - Portstewart, North of B185	6,440	3.1	440	08:00	570	15:00
312	A2	Portrush – Portstewart, at Portrush	6,460	2.9	400	11:00	590	15:00
315	B62	Ballymoney - Portrush, North of A26	7,430	6.0	510	11:00	650	16:00
318	A44	Ballycastle - Armoy, East of B67	-	-	-	-	-	-
321	A54	Coleraine - Kilrea, South of A29	6,070	2.2	470	08:00	550	17:00
325	A29	Coleraine Ring Road, between A29 - B185	-	-	-	-	-	-
331	B64	Dungiven - Garvagh, at Dungiven	3,230	9.9	240	08:00	350	17:00
332	A2	Limavady – Magilligan, North of B69	2,680	4.6	150	11:00	240	16:00
353	A515	Foyle Bridge, Londonderry	-	-	-	-	-	-
376	A2	A2 Ballykelly Road, Limavady	13,490	8.1	1,120	08:00	1,240	17:00
391	A5	Victoria Road, Londonderry, at Bolies	-	-	-	-	-	-
392	A2	Duke Street, Londonderry (To Limavady)	6,930	8.2	470	11:00	600	16:00
405	A1	Dublin Road, Newry	19,190	18.6	1,680	08:00	1,860	17:00
410	A1	Dromore – Banbridge, South of Old Banbridge Road	23,680	13.6	1,920	08:00	2,230	17:00

Table 3 – 2020 Annual Average Daily Traffic Flow (AADT) (7 day) and Mean Weekday Peak Hour Flows (5 day)

C P No.	ROUTE No.	LOCATION	7 day flows		5 day flows			
			24 HR AADT	% HGV	MEAN PEAK HOUR (HOUR STARTING - WEEKDAYS)			
					AM	Start	PM	Start
418	A28	Armagh - Newry, at Markethill	-	-	-	-	-	-
419	A1	Loughbrickland – Newry, North of Beechill Road	20,640	15.1	1,820	08:00	1,980	17:00
442	A3	Monaghan Road, Middletown, Co Armagh	3,200	14.9	250	08:00	300	17:00
443	A2	Rostrevor Road, Warrenpoint, Co. Down	9,650	5.9	730	08:00	930	17:00
444	A20	Portaferry Road, Kircubbin, Co. Down	6,170	5.7	520	07:00	590	16:00
502	A2	Belfast - Bangor, at Cultra, East of Folk Museum	27,470	3.9	2,270	08:00	2,610	16:00
507	A21	Bangor Road, Newtownards	17,730	4.4	1,400	08:00	1,560	15:00
508	A48	Donagadee Road, Newtownards	9,190	4.4	630	11:00	840	16:00
510	A2	Donaghadee - Millisle, at Ballyvester	4,540	3.4	310	11:00	410	15:00
512	A22	Comber - Killyleagh, at Comber	8,010	6.3	610	08:00	800	16:00
513	A7	Belfast Road, Downpatrick, at Quoile	10,210	5.9	860	08:00	940	17:00
520	M1	Blacks Road (Junction 3) – Saintfield Road (Junction 6)	43,740	12.1	3,110	06:00	3,700	14:00
522	A1	Lisburn - Hillsborough (at Harry's Road)	-	-	-	-	-	-
532	C297	Ballynahinch Road, Lisburn	2,920	4.4	310	08:00	290	16:00
536	A1	A1 Newry, North of A27 Junction	16,410	16.5	1,460	08:00	1,640	17:00
610	A5	Omagh – Ballygawley, South of B122 (past junction of U1306)	10,980	35.8	870	08:00	1,050	17:00
612	A34	Lisnaskea - Maguiresbridge (Lisnagole Road near St Mary's Primary School)	7,230	13.8	580	08:00	680	17:00
615	A4	Enniskillen – Belcoo (East of Letterbreen near Moybrone/ Station Road Cross Roads)	3,170	9.8	240	08:00	290	17:00
617	A32	Enniskillen - Irvinestown (North of Cherrymount Roundabout)	13,850	8.0	1,360	08:00	1,330	16:00
629	A4	Enniskillen - Fivemiletown (West of B514 at Cultiagh)	9,670	9.3	790	08:00	880	17:00

Table 3 – 2020 Annual Average Daily Traffic Flow (AADT) (7 day) and Mean Weekday Peak Hour Flows (5 day)

C P No.	ROUTE No.	LOCATION	7 day flows		5 day flows			
			24 HR AADT	% HGV	MEAN PEAK HOUR (HOUR STARTING - WEEKDAYS)			
					AM	Start	PM	Start
632	B52	Garrison - Belleek (South of Farancassidy Cross Roads at Brollagh School)	1,730	8.0	130	11:00	160	17:00
645	A5	Omagh By-Pass, at footbridge	-	-	-	-	-	-
648	A5	Strabane By-Pass (Barnhill Road West of Derry Road)	11,890	9.7	1,020	08:00	1,130	17:00
660	A5	Omagh – Ballygawley, South of Crevenagh Road Roundabout	13,640	14.7	1,020	08:00	1,230	17:00
665	A32	Enniskillen Road, Irvinestown	-	-	-	-	-	-
670	A3	Clones Road Cavan side of B533	3,830	19.3	320	08:00	360	17:00
674	A47	Boa Island Road, Belleek	1,960	7.6	130	11:00	170	17:00
675	A5	A5 Tullyvar Road, Ballygawley	7,110	20.5	500	08:00	630	17:00
789	A52	Ballyutoag Road, Co. Antrim	3,570	8.2	380	08:00	390	17:00
793	A2	Shore Road South of Jordantown Road	22,900	3.8	1,700	08:00	2,020	16:00
794	A1	Lisburn Road at Dunluce Avenue	12,750	2.4	850	08:00	980	17:00
797	A52	Crumlin Road, Belfast side Horseshoe bend	8,300	5.7	720	08:00	820	17:00
799	A52	Crumlin Road at Ingledene Park	16,950	3.9	1,130	08:00	1,380	17:00
800	A24	Ormeau Road at Knockbreda Park	20,430	3.5	1,410	11:00	1,680	16:00
907	A2	Belfast Road, Bangor Side of Ballyrobert Road Junction	11,140	4.8	1,370	07:00	770	13:00
908	A2	Belfast Road, Belfast Side of Ballyrobert Road Junction	-	-	-	-	-	-
910	A2	Bangor Road Cultra, Before Whinney Hill	13,780	4.3	1,450	08:00	1,020	16:00
918	A20	Upper Newtownards Road, Belfast at bus-stop opposite Summerhill Avenue (Outbound)	11,040	-	780	08:00	810	17:00
921	A20	Upper Newtownards Road, Belfast at Stormont entrance (Inbound)	11,390	-	860	08:00	800	16:00
922	A55	Knock Road, Castlereagh, at Shandon Park	25,040	3.3	2,090	08:00	2,280	16:00

Table 3 – 2020 Annual Average Daily Traffic Flow (AADT) (7 day) and Mean Weekday Peak Hour Flows (5 day)

C P No.	ROUTE No.	LOCATION	7 day flows		5 day flows			
			24 HR AADT	% HGV	MEAN PEAK HOUR (HOUR STARTING - WEEKDAYS)			
					AM	Start	PM	Start
923	A6	Toome to Randalstown	14,480	31.6	1,340	08:00	1,430	16:00

Table 4 – 7 day Annual Average Directional Flows and Percentage Composition of Traffic – EURO 6 sites

The main Vehicle Classification system now used by DfI Roads, (i.e. EURO 6), is shown in the following table. There are six classes as follows:-

Vehicle Class	Description
Class 1	Motorbike
Class 2	Car / Van
Class 3	Car / Van + Trailer
Class 4	Rigid HGV
Class 5	Articulated HGV
Class 6	Bus & Coach

Table 4 contains the 7 day Annual Average Daily Traffic flow (AADT) by direction and the percentage traffic composition of the AADT. The sites are listed by Census Point number.

Table 4 – 7 day Annual Average Directional Flows and Percentage Composition of Traffic											
C P No.	ROUTE No.	LOCATION	24HR 7 DAY flow								
			Directional and Total			Percentage Traffic Composition					
			CH. 1	CH. 2	Total AADT	Motorbike	Car / Van	Car / Van + Trailer	HGV		
									Rigid HGV	Artic HGV	Bus / Coach
101	B95	Antrim - M2, at Greystone Road	2,520	2,390	4,910	0.6	88.5	0.5	7.2	1.9	1.3
102	A6	Toome - Randalstown, at Drumbeg	660	750	1,410	0.6	78.8	1.0	11.5	5.5	2.6
109	A26	Nutts Corner - Moira, at Nutts Corner	-	-	-	-	-	-	-	-	-
110	M2	Rathbeg (Junction 6) – Dunsilly (Junction 1 on M22)	17,480	17,740	35,220	0.2	84.9	0.6	8.1	5.5	0.7
111	M22	Dunsilly (Junction 1) – Ballygrooby (Junction 2)	8,760	9,010	17,770	0.1	82.8	0.8	9.0	6.4	0.9
117	A2	Whitehead - Carrickfergus	3,350	3,340	6,690	1.1	94.9	0.6	2.8	0.5	0.1
119	A2	Larne - Ballygalley, at Blackcave Tunnel	1,280	1,420	2,700	2.7	94.0	0.6	2.0	0.2	0.5
122	A6	Castledawson – Dungiven (North West of A31 near roundabout)	5,970	6,020	11,990	0.2	84.1	0.5	8.3	4.8	2.1

Table 4 – 7 day Annual Average Directional Flows and Percentage Composition of Traffic											
C P No.	ROUTE No.	LOCATION	24HR 7 DAY flow								
			Directional and Total			Percentage Traffic Composition					
			CH. 1	CH. 2	Total AADT	Motorbike	Car / Van	Car / Van + Trailer	HGV		
									Rigid HGV	Artic HGV	Bus / Coach
123	A31	Moneymore Road, Magherafelt	2,950	2,880	5,830	0.2	94.4	0.7	3.5	0.6	0.6
128	A31	Castledawson - Magherafelt (South West of Bowmans Road)	4,750	4,340	9,090	0.1	93.4	0.9	4.1	0.8	0.7
131	A36	Ballymena - Larne, at Moorfield	2,240	2,100	4,340	0.5	83.2	2.2	8.8	4.7	0.6
132	M2	Rathbeg (Junction 6) – Templepatrick (Junction 5)	18,900	18,950	37,850	0.2	85.6	0.5	7.6	5.3	0.8
135	A8	Larne - Ballynure, at Craiginorne	730	840	1,570	0.6	87.4	0.7	6.6	2.0	2.7
149	A6	Belfast Road, Mallusk	-	-	-	-	-	-	-	-	-
151	A6	Between Templepatrick Roundabout & Kilmakee Roundabout	-	-	-	-	-	-	-	-	-
159	B39	Seven Mile Straight, Ballyrobin	1,130	1,260	2,390	0.5	92.5	0.9	5.2	0.4	0.5
201	M1	Broadway (Junction 1) – Stockman's Lane (Junction 2)	27,160	27,800	54,960	0.3	89.5	0.5	5.2	4.2	0.3
202	M2	Fortwilliam Interchange Inbound (Junction 1)	40,570	-	40,570	0.2	90.6	0.4	5.5	2.6	0.7
203	M2	Fortwilliam Interchange Outbound (Junction 1)	41,210	-	41,210	0.2	90.5	0.4	5.8	2.5	0.6
204 1	M2	Greencastle (Junction 2) – Sandyknowes (Junction 4) (From Belfast)	28,330	-	28,330	0.3	89.1	0.6	4.4	5.1	0.5
204 2	M2	Greencastle (Junction 2) – Sandyknowes (Junction 4) (To Belfast)	28,710	-	28,710	0.2	85.2	0.6	8.0	5.4	0.6
205	M2	Sandyknowes (Junction 4) – Templepatrick (Junction 5)	19,360	18,870	38,230	0.2	86.8	0.6	6.8	5.0	0.6
206	M5	Greencastle (Junction 2) - Whiteabbey	13,800	13,190	26,990	0.3	94.3	0.3	3.8	0.8	0.5
207	A8	Sandyknowes (Junction 4) – Corr's Corner	6,760	7,020	13,780	0.3	82.7	0.7	10.2	5.6	0.5
209	A2	Sydenham By-Pass, at George Best Belfast City Airport	20,740	19,160	39,900	0.4	91.9	0.3	5.5	1.2	0.7
212	A8	North of Corr's Corner, on dual carriageway	8,340	7,710	16,050	0.4	88.0	0.4	6.2	4.3	0.7

Table 4 – 7 day Annual Average Directional Flows and Percentage Composition of Traffic											
C P No.	ROUTE No.	LOCATION	24HR 7 DAY flow								
			Directional and Total			Percentage Traffic Composition					
			CH. 1	CH. 2	Total AADT	Motorbike	Car / Van	Car / Van + Trailer	HGV		
									Rigid HGV	Artic HGV	Bus / Coach
213	A12	Westlink, Belfast, South of Roden Street	29,590	28,870	58,460	0.4	84.4	0.5	9.9	4.3	0.5
221	A55	Upper Knockbreda Road, Belfast	11,160	12,910	24,070	0.4	95.5	0.1	2.9	0.3	0.8
227	M1	Stockman's Lane Junction (above roundabout)	20,340	18,310	38,650	0.3	75.2	0.4	17.5	6.1	0.5
230	M1	Blacks Road on – slip (Junction 3)	18,150	-	18,150	0.2	95.5	0.2	3.1	0.7	0.3
231	M1	Blacks Road off – slip (Junction 3)	16,090	-	16,090	0.3	93.9	0.3	3.8	1.2	0.5
234	B101	Pond Park Road, Lisburn	2,970	2,850	5,820	0.5	90.0	0.7	6.3	2.0	0.5
235	A3	Moira Road, Lisburn, West of Lissue Industrial Estate	4,840	4,890	9,730	0.4	90.6	0.7	5.9	1.9	0.5
290	A12	Westlink, Clifton Street, towards M1	31,230	4,530	35,760	0.4	86.5	0.6	6.9	5.4	0.2
291	A12	Westlink, Clifton Street, towards M2	34,130	6,700	40,830	0.1	90.0	0.4	5.0	4.3	0.2
306	A6	Dungiven - Londonderry, East of B74	6,140	6,170	12,310	0.2	95.2	1.4	8.0	4.4	0.8
308	A29	Coleraine - Limavady, at Femlester	7,030	7,670	14,700	0.4	91.0	1.9	5.0	1.6	0.1
309	A29	Coleraine - Garvagh, South of B66	2,350	2,410	4,760	0.3	89.7	1.7	5.4	2.8	0.1
310	A26	Coleraine - Ballymoney, South East of Ring Road	6,470	6,480	12,950	0.2	93.1	0.7	4.1	1.6	0.3
311	A2	Coleraine - Portstewart, North of B185	3,300	3,140	6,440	0.8	95.6	0.6	2.4	0.1	0.5
312	A2	Portrush – Portstewart, at Portrush	3,250	3,210	6,460	0.8	95.8	0.3	2.5	0.1	0.5
315	B62	Ballymoney - Portrush, North of A26	3,850	3,580	7,430	0.3	93.4	1.1	3.5	1.4	0.3
318	A44	Ballycastle - Armoy, East of B67	-	-	-	-	-	-	-	-	-
321	A54	Coleraine - Kilrea, South of A29	2,980	3,090	6,070	0.4	97.4	0.1	2.0	0.1	0.0

Table 4 – 7 day Annual Average Directional Flows and Percentage Composition of Traffic											
C P No.	ROUTE No.	LOCATION	24HR 7 DAY flow								
			Directional and Total			Percentage Traffic Composition					
			CH. 1	CH. 2	Total AADT	Motorbike	Car / Van	Car / Van + Trailer	HGV		
									Rigid HGV	Artic HGV	Bus / Coach
325	A29	Coleraine Ring Road, between A29 - B185	-	-	-	-	-	-	-	-	-
331	B64	Dungiven - Garvagh, at Dungiven	1,630	1,600	3,230	0.2	89.2	1.6	6.8	1.5	0.7
332	A2	Limavady – Magilligan, North of B69	1,360	1,320	2,680	1.1	93.9	1.4	2.9	0.3	0.4
353	A515	Foyle Bridge, Londonderry	-	-	-	-	-	-	-	-	-
376	A2	A2 Ballykelly Road, Limavady	6,720	6,770	13,490	0.3	91.0	1.1	5.4	1.6	0.6
391	A5	Victoria Road, Londonderry, at Bolies	-	-	-	-	-	-	-	-	-
392	A2	Duke Street, Londonderry (To Limavady)	6,930	-	6,930	0.7	89.7	0.7	4.7	2.8	1.4
405	A1	Dublin Road, Newry	9,520	9,670	19,190	0.3	79.8	0.6	7.8	10.2	1.3
410	A1	Dromore – Banbridge, South of Old Banbridge Road	11,830	11,850	23,680	0.3	84.5	0.5	6.8	6.3	1.6
418	A28	Armagh - Newry, at Markethill	-	-	0	-	-	-	-	-	-
419	A1	Loughbrickland – Newry, North of Beechill Road	10,290	10,350	20,640	0.2	82.9	0.4	7.1	7.6	1.8
442	A3	Monaghan Road, Middletown, Co Armagh	1,600	1,600	3,200	0.3	83.6	1.3	7.8	5.8	1.2
443	A2	Rostrevor Road, Warrenpoint, Co. Down	4,800	4,850	9,650	0.4	92.6	0.3	4.8	0.8	1.1
444	A20	Portaferry Road, Kircubbin, Co. Down	3,140	3,030	6,170	1.0	92.1	0.6	4.5	0.6	1.2
502	A2	Belfast - Bangor, at Cultra, East of Folk Museum	13,640	13,830	27,470	0.4	95.4	0.3	2.9	0.7	0.3
507	A21	Bangor Road, Newtownards	9,060	8,670	17,730	0.5	94.8	0.7	3.5	0.2	0.3
508	A48	Donagadee Road, Newtownards	4,880	4,310	9,190	0.4	94.4	0.3	3.9	0.2	0.8
510	A2	Donaghadee - Millisle, at Ballyvester	2,280	2,260	4,540	1.5	94.2	0.2	3.1	0.1	0.9

Table 4 – 7 day Annual Average Directional Flows and Percentage Composition of Traffic											
C P No.	ROUTE No.	LOCATION	24HR 7 DAY flow								
			Directional and Total			Percentage Traffic Composition					
			CH. 1	CH. 2	Total AADT	Motorbike	Car / Van	Car / Van + Trailer	HGV		
									Rigid HGV	Artic HGV	Bus / Coach
512	A22	Comber - Killyleagh, at Comber	4,040	3,970	8,010	0.6	92.5	1.0	4.7	0.6	0.6
513	A7	Belfast Road, Downpatrick, at Quoile	5,020	5,190	10,210	0.3	92.4	0.3	4.8	0.8	1.4
520	M1	Blacks Road (Junction 3) – Saintfield Road (Junction 6)	22,060	21,680	43,740	0.6	86.9	1.0	5.8	5.3	0.4
522	A1	Lisburn - Hillsborough (at Harry's Road)	-	-	-	-	-	-	-	-	-
532	C297	Ballynahinch Road, Lisburn	1,530	1,390	2,920	0.6	94.0	0.5	3.7	0.2	1.0
536	A1	A1 Newry, North of A27 Junction	8,100	8,310	16,410	0.2	82.2	0.7	7.1	8.7	1.1
610	A5	Omagh – Ballygawley, South of B122 (past junction of U1306)	5,410	5,570	10,980	0.1	64.0	1.0	24.1	10.7	0.1
612	A34	Lisnaskea - Maguiresbridge (Lisnagole Road near St Mary's Primary School)	3,610	3,620	7,230	0.1	85.3	1.4	6.7	5.7	0.8
615	A4	Enniskillen – Belcoo (East of Letterbreen near Moybrone/ Station Road Cross Roads)	1,590	1,580	3,170	0.4	89.2	2.1	4.8	2.9	0.6
617	A32	Enniskillen - Irvinestown (North of Cherrymount Roundabout)	6,900	6,950	13,850	0.2	91.2	0.9	4.6	2.5	0.6
629	A4	Enniskillen - Fivemiletown (West of B514 at Cultiagh)	4,820	4,850	9,670	0.2	89.6	1.0	5.5	2.8	0.9
632	B52	Garrison - Belleek (South of Farancassidy Cross Roads at Brollagh School)	870	860	1,730	0.4	91.6	2.9	4.5	0.6	0.0
645	A5	Omagh By-Pass, at footbridge	-	-	-	-	-	-	-	-	-
648	A5	Strabane By-Pass (Barnhill Road West of Derry Road)	6,190	5,700	11,890	0.3	89.9	0.9	5.2	3.6	0.1
660	A5	Omagh – Ballygawley, South of Crevenagh Road Roundabout	6,420	7,220	13,640	0.1	84.1	1.3	7.2	6.2	1.1
665	A32	Enniskillen Road, Irvinestown	-	-	-	-	-	-	-	-	-
670	A3	Clones Road Cavan side of B533	1,950	1,880	3,830	0.5	80.2	2.0	6.9	10.4	0.0
674	A47	Boa Island Road, Belleek	980	980	1,960	0.7	91.0	1.1	4.9	1.6	0.7

Table 4 – 7 day Annual Average Directional Flows and Percentage Composition of Traffic											
C P No.	ROUTE No.	LOCATION	24HR 7 DAY flow								
			Directional and Total			Percentage Traffic Composition					
			CH. 1	CH. 2	Total AADT	Motorbike	Car / Van	Car / Van + Trailer	HGV		
									Rigid HGV	Artic HGV	Bus / Coach
675	A5	A5 Tullyvar Road, Ballygawley	3,550	3,560	7,110	0.2	78.1	1.4	8.3	10.8	1.2
789	A52	Ballyutoag Road, Co. Antrim	1,790	1,780	3,570	0.5	90.9	0.3	6.3	1.6	0.4
793	A2	Shore Road South of Jordanstown Road	11,510	11,390	22,900	0.5	95.3	0.2	2.8	0.8	0.4
794	A1	Lisburn Road at Dunluce Avenue	6,490	6,260	12,750	1.2	94.8	0.1	2.1	0.2	1.6
797	A52	Crumlin Road, Belfast side Horseshoe bend	4,320	3,980	8,300	0.3	93.7	0.2	4.9	0.6	0.3
799	A52	Crumlin Road at Ingledene Park	8,630	8,320	16,950	0.4	94.6	0.2	3.4	0.3	1.1
800	A24	Ormeau Road at Knockbreda Park	10,060	10,370	20,430	1.1	93.8	0.3	2.4	0.8	1.6
907	A2	Belfast Road, Bangor Side of Ballyrobert Road Junction	11,140	-	11,140	0.4	94.4	0.3	3.6	0.9	0.4
908	A2	Belfast Road, Belfast Side of Ballyrobert Road Junction	-	-	-	-	-	-	-	-	-
910	A2	Bangor Road Cultra, Before Whinney Hill	13,780	-	13,780	0.4	95.0	0.4	3.1	0.8	0.3
918	A20	Upper Newtownards Road, Belfast at bus-stop opposite Summerhill Avenue (Outbound)	11,040	-	11,040	-	-	-	-	-	-
921	A20	Upper Newtownards Road, Belfast at Stormont entrance (Inbound)	11,390	-	11,390	-	-	-	-	-	-
922	A55	Knock Road, Castlereagh, at Shandon Park	12,220	12,820	25,040	0.4	96.2	0.4	2.7	0.2	0.1
923	A6	Toome to Randalstown	7,260	7,220	14,480	0.1	67.5	0.7	22.5	8.4	0.8

Table 5 – 5 day Directional Flow Information

Table 5 contains the weekday flows (5 day) for both directions of travel and a combined total, where appropriate. The peak hour flows are also given by direction, together with the start time of each peak hour.

The sites are listed in order of Census Point Number for ease of reference.

Table 5 – 5 day Directional Flow Information												
C P No.	ROUTE No.	PEAK HOUR FLOW Weekday										
		24HR Weekday			CHANNEL 1				CHANNEL 2			
		CH. 1	CH. 2	TOTAL	AM	Start	PM	Start	AM	Start	PM	Start
101	B95	2,830	2,680	5,510	210	07:00	240	15:00	190	11:00	280	15:00
102	A6	730	830	1,560	50	08:00	70	17:00	60	07:00	70	16:00
109	A26	-	-	-	-	-	-	-	-	-	-	-
110	M2	19,490	19,490	38,980	1,620	08:00	2,120	16:00	2,010	07:00	1,560	17:00
111	M22	9,860	10,080	19,940	650	08:00	1,210	16:00	1,220	07:00	670	17:00
117	A2	3,430	3,360	6,790	230	11:00	290	15:00	240	11:00	310	14:00
119	A2	1,210	1,350	2,560	90	11:00	120	15:00	120	11:00	140	14:00
122	A6	6,490	6,620	13,110	520	07:00	470	17:00	420	08:00	690	16:00
123	A31	3,150	3,100	6,250	270	08:00	260	15:00	230	08:00	280	15:00
128	A31	5,000	4,530	9,530	330	11:00	420	15:00	360	08:00	340	14:00
131	A36	2,500	2,290	4,790	250	08:00	210	16:00	170	08:00	210	17:00
132	M2	21,050	20,790	41,840	1,760	08:00	2,240	16:00	2,080	07:00	1,670	17:00
135	A8	790	920	1,710	50	11:00	70	17:00	70	08:00	70	16:00
149	A6	-	-	-	-	-	-	-	-	-	-	-
151	A6	-	-	-	-	-	-	-	-	-	-	-
159	B39	1,240	1,400	2,640	110	08:00	120	16:00	150	08:00	130	17:00
201	M1	29,470	29,920	59,390	2,780	08:00	3,900	16:00	3,770	08:00	2,890	14:00
202	M2	44,080	-	44,080	4,310	07:00	3,000	16:00	-	-	-	-
203	M2	45,180	-	45,180	2,820	08:00	4,730	16:00	-	-	-	-
204_1	M2	31,650	-	31,650	2,180	08:00	3,190	16:00	-	-	-	-
204_2	M2	31,770	-	31,770	3,190	07:00	2,180	17:00	-	-	-	-
205	M2	21,390	20,520	41,910	1,600	08:00	2,290	16:00	2,040	07:00	1,550	17:00
206	M5	15,040	14,370	29,410	880	08:00	1,610	17:00	1,520	08:00	980	16:00
207	A8	7,670	7,940	15,610	430	08:00	890	17:00	900	07:00	500	16:00
209	A2	22,660	21,000	43,660	1,870	07:00	1,850	16:00	1,300	08:00	1,920	17:00
212	A8	9,220	8,600	17,820	890	07:00	610	16:00	480	11:00	960	17:00
213	A12	31,980	31,190	63,170	3,290	08:00	3,700	16:00	3,480	08:00	3,170	15:00
221	A55	12,070	14,060	26,130	920	08:00	1,040	16:00	1,040	08:00	1,220	16:00

Table 5 – 5 day Directional Flow Information												
C P No.	ROUTE No.	PEAK HOUR FLOW Weekday										
		24HR Weekday			CHANNEL 1				CHANNEL 2			
		CH. 1	CH. 2	TOTAL	AM	Start	PM	Start	AM	Start	PM	Start
227	M1	21,910	19,550	41,460	2,140	08:00	3,280	16:00	2,980	07:00	2,120	15:00
230	M1	19,770	-	19,770	1,810	08:00	1,390	14:00	-	-	-	-
231	M1	17,370	-	17,370	1,020	11:00	1,560	16:00	-	-	-	-
234	B101	3,220	3,090	6,310	260	08:00	360	17:00	280	08:00	290	16:00
235	A3	5,390	5,400	10,790	510	08:00	390	14:00	350	11:00	490	16:00
290	A12	34,340	4,730	39,070	2,730	07:00	2,390	16:00	300	11:00	330	13:00
291	A12	37,610	7,200	44,810	2,480	08:00	2,950	16:00	460	08:00	540	16:00
306	A6	6,600	6,580	13,180	450	08:00	610	17:00	400	08:00	540	16:00
308	A29	7,340	7,940	15,280	620	08:00	570	14:00	490	11:00	810	16:00
309	A29	2,420	2,460	4,880	230	08:00	180	17:00	140	11:00	270	16:00
310	A26	6,950	7,190	14,140	620	08:00	550	17:00	490	08:00	690	17:00
311	A2	3,290	3,080	6,370	230	11:00	300	15:00	210	11:00	270	15:00
312	A2	2,990	2,910	5,900	210	11:00	300	14:00	200	11:00	300	15:00
315	B62	3,890	3,510	7,400	300	11:00	330	17:00	240	08:00	330	16:00
318	A44	-	-	-	-	-	-	-	-	-	-	-
321	A54	3,120	3,230	6,350	300	08:00	250	14:00	200	11:00	320	17:00
325	A29	-	-	-	-	-	-	-	-	-	-	-
331	B64	1,760	1,730	3,490	120	08:00	180	17:00	120	08:00	170	17:00
332	A2	1,240	1,210	2,450	90	11:00	130	16:00	90	07:00	110	16:00
353	A515	-	-	-	-	-	-	-	-	-	-	-
376	A2	7,220	7,250	14,470	560	08:00	640	17:00	550	08:00	610	16:00
391	A5	-	-	-	-	-	-	-	-	-	-	-
392	A2	7,630	-	7,630	470	11:00	600	16:00	-	-	-	-
405	A1	10,520	10,690	21,210	1,070	08:00	760	17:00	600	08:00	1,100	17:00
410	A1	12,850	12,890	25,740	1,010	07:00	1,020	17:00	950	08:00	1,200	17:00
418	A28	-	-	-	-	-	-	-	-	-	-	-
419	A1	11,250	11,310	22,560	1,100	08:00	880	17:00	710	08:00	1,100	17:00
442	A3	1,700	1,690	3,390	140	08:00	150	17:00	120	08:00	150	17:00
443	A2	4,990	5,050	10,040	480	08:00	360	17:00	290	11:00	570	17:00
444	A20	3,380	3,250	6,630	190	11:00	430	17:00	430	07:00	210	12:00
502	A2	14,730	14,970	29,700	1,550	07:00	950	15:00	840	11:00	1,670	16:00
507	A21	9,760	9,360	19,120	690	11:00	810	15:00	740	08:00	770	16:00
508	A48	5,180	4,560	9,740	400	08:00	410	14:00	280	11:00	480	17:00
510	A2	2,260	2,220	4,480	170	08:00	200	15:00	150	11:00	220	16:00
512	A22	4,320	4,240	8,560	290	11:00	480	16:00	380	08:00	320	15:00

Table 5 – 5 day Directional Flow Information												
C P No.	ROUTE No.	PEAK HOUR FLOW Weekday										
		24HR Weekday			CHANNEL 1				CHANNEL 2			
		CH. 1	CH. 2	TOTAL	AM	Start	PM	Start	AM	Start	PM	Start
513	A7	5,480	5,660	11,140	450	08:00	510	17:00	410	08:00	460	16:00
520	M1	24,300	23,690	47,990	1,580	11:00	2,200	14:00	1,790	05:00	1,520	12:00
522	A1	-	-	-	-	-	-	-	-	-	-	-
532	C297	1,710	1,550	3,260	230	08:00	130	14:00	100	11:00	180	17:00
536	A1	8,920	9,160	18,080	960	08:00	630	17:00	520	11:00	1,010	17:00
610	A5	5,940	5,970	11,910	510	08:00	570	17:00	400	07:00	490	16:00
612	A34	3,950	3,970	7,920	300	08:00	320	17:00	280	08:00	360	17:00
615	A4	1,680	1,660	3,340	160	08:00	130	12:00	110	11:00	180	17:00
617	A32	7,580	7,670	15,250	710	08:00	660	16:00	650	08:00	690	17:00
629	A4	5,160	5,150	10,310	530	08:00	360	14:00	320	11:00	540	17:00
632	B52	900	880	1,780	60	11:00	80	17:00	60	11:00	80	17:00
645	A5	-	-	-	-	-	-	-	-	-	-	-
648	A5	6,800	6,180	12,980	550	08:00	580	17:00	470	08:00	560	17:00
660	A5	6,940	7,810	14,750	540	08:00	580	17:00	520	07:00	650	17:00
665	A32	-	-	-	-	-	-	-	-	-	-	-
670	A3	2,090	2,000	4,090	130	08:00	210	17:00	180	08:00	160	17:00
674	A47	1,000	980	1,980	70	11:00	80	13:00	60	11:00	90	17:00
675	A5	3,840	3,790	7,630	240	08:00	340	17:00	260	08:00	290	17:00
789	A52	1,970	1,960	3,930	270	08:00	170	17:00	110	08:00	230	16:00
793	A2	12,440	12,270	24,710	1,060	07:00	900	15:00	730	11:00	1,140	16:00
794	A1	6,890	6,660	13,550	500	08:00	470	14:00	400	11:00	550	17:00
797	A52	4,750	4,340	9,090	490	08:00	410	17:00	240	07:00	420	16:00
799	A52	9,140	8,820	17,960	660	08:00	630	14:00	500	11:00	750	17:00
800	A24	10,630	10,960	21,590	730	08:00	800	14:00	710	11:00	910	16:00
907	A2	12,100	-	12,100	1,370	07:00	770	13:00	-	-	-	-
908	A2	-	-	-	-	-	-	-	-	-	-	-
910	A2	14,800	-	14,800	1,450	08:00	1,020	16:00	-	-	-	-
918	A20	11,750	-	11,750	780	08:00	810	17:00	-	-	-	-
921	A20	12,090	-	12,090	860	08:00	800	16:00	-	-	-	-
922	A55	13,200	13,890	27,090	1,040	08:00	1,150	16:00	1,050	08:00	1,140	17:00
923	A6	8,200	8,100	16,300	530	08:00	910	16:00	850	07:00	530	17:00

PART 2

VARIATIONS IN TRAFFIC FLOW

General information relating to Part 2 - Variations in Traffic Flow

2.1 Tables 6 and 7 provide information on changes in recorded traffic flows over recent years. Table 6 gives the Annual Average Daily Traffic (AADT) (7 day) figures from 2010 - 2020. Table 7 includes percentage changes in traffic volumes (7 day) between 2016 and 2020.

2.2 The following are points of clarification regarding Tables 6 and 7:

- (a) CP 123 – Moneymore Road, Magherafelt: drop in traffic flow due to the opening of the Magherafelt By-Pass in 2017.
- (b) CP 128 – Castledawson – Magherafelt (South West of Bowmans Road): drop in traffic flow due to the opening of the Magherafelt By-Pass in 2017.
- (c) CP 135 – Larne to Ballynure, at Craiginorne: drop in traffic flow due to the opening of the new section of A8 in 2015.
- (d) CP 204 – Greencastle (Junction 2) – Sandyknowes (Junction 4): from 2017 onwards this site has been split into 2 separate sites covering each of the 2 channels, (i.e. CP 204_1 – From Belfast and CP 204_2 – To Belfast). The historic data in Tables 6 and 7 have been amended accordingly.
- (e) CP 392 – Duke Street, Londonderry: from 2017 onwards this site only records data in one direction, (i.e. To Limavady). The historic data in Tables 6 and 7 have been amended accordingly.
- (f) All other cells within Tables 6 and 7 that are marked “-” means that either the data was considered unreliable or no information was available at that site.

2.3 The changes in traffic flows between 2019 and 2020 for the various classes of road are shown in Table 8.

2.4 It should be noted that, due to the Covid-19 pandemic, traffic figures are generally much lower in 2020. The 5-day and 7-day AADT peak hour flows contained within this report can therefore not be considered as representative of a typical year.

Table 6 - Annual Average Daily Traffic (7 day) from 2010 - 2020

This table contains the Annual Average Daily Traffic flows (7 day) for each site for each year. The sites are listed in order of Census Point Number.

Table 6 - 7 Day (AADT)												
C P No.	ROUTE No.	2010	2011	2012	2013	2014	2015	2016	2017	2018	2019	2020
101	B95	8,170	-	-	7,700	8,060	8,500	9,040	-	-	-	4,910
102	A6	19,130	-	-	-	18,660	19,310	19,960	20,270	-	-	1,410
109	A26	11,230	11,230	11,400	11,670	11,870	11,930	13,070	13,500	-	-	-
110	M2	37,850	37,510	37,600	37,960	39,160	-	-	-	43,050	43,310	35,220
111	M22	19,670	19,380	19,260	19,490	19,900	-	-	-	20,900	20,970	17,770
117	A2	6,730	-	7,200	7,050	7,260	7,300	7,020	7,320	7,410	7,120	6,690
119	A2	2,940	2,840	2,890	3,240	3,340	3,140	3,130	3,270	3,090	2,880	2,700
122	A6	13,500	13,250	12,850	13,100	13,400	14,040	14,780	15,340	14,930	14,970	11,990
123	A31	10,530	10,550	10,550	10,520	10,690	11,230	11,350	7,080	7,020	7,180	5,830
128	A31	16,220	17,910	15,320	-	14,690	15,520	15,420	11,550	11,280	10,800	9,090
131	A36	5,090	-	-	4,800	5,410	5,420	5,540	5,690	5,450	5,660	4,340
132	M2	40,930	40,410	40,360	40,620	41,640	-	-	-	45,940	46,350	37,850
135	A8	13,600	13,430	12,880	12,980	12,280	1,780	1,820	1,810	1,840	1,840	1,570
149	A6	3,710	3,560	-	3,500	4,020	3,870	3,860	3,910	4,110	-	-
151	A6	15,330	-	-	14,990	14,950	15,260	16,070	16,740	16,280	-	-
159	B39	2,610	2,580	2,530	2,550	2,630	2,700	2,750	2,820	2,960	2,990	2,390
201	M1	78,630	79,430	81,240	82,740	85,800	88,990	90,590	91,610	91,300	92,140	54,960
202	M2	48,630	48,930	48,750	47,390	46,440	49,650	49,980	49,970	49,580	50,150	40,570
203	M2	48,330	47,810	47,720	48,640	49,530	50,870	51,970	51,900	51,560	52,130	41,210
204_1	M2	31,880	31,690	31,820	32,080	32,730	34,050	34,980	35,330	35,590	35,770	28,330
204_2	M2	32,020	32,020	32,030	32,250	32,730	33,340	34,480	34,890	35,100	35,610	28,710
205	M2	42,790	42,610	42,700	42,960	43,790	46,390	48,010	48,610	48,690	49,460	38,230
206	M5	32,360	32,010	31,760	31,480	31,860	32,370	33,090	32,730	32,590	32,810	26,990
207	A8	15,210	14,990	14,510	14,540	14,770	15,640	15,300	15,530	15,820	16,160	13,780
209	A2	57,040	-	-	56,210	58,050	60,170	59,900	58,620	59,430	59,440	39,900
212	A8	-	-	16,950	17,820	17,460	17,770	18,200	-	-	-	16,050
213	A12	83,780	85,600	87,860	89,960	92,220	95,810	97,120	97,160	96,420	98,010	58,460
221	A55	36,010	-	-	35,050	34,310	34,050	34,010	33,390	32,440	33,510	24,070
227	M1	61,610	61,390	62,690	62,660	65,000	67,620	69,250	70,500	70,590	71,840	38,650
230	M1	18,170	18,520	19,000	19,370	20,010	20,500	20,850	20,750	20,600	20,710	18,150
231	M1	16,660	16,960	17,260	17,540	18,200	18,600	18,670	19,030	18,690	19,160	16,090
234	B101	7,560	7,480	7,440	7,250	7,630	7,790	8,090	8,300	8,270	8,350	5,820
235	A3	11,700	11,480	11,300	-	12,080	11,860	11,600	12,020	11,960	11,910	9,730
290	A12	35,400	36,090	36,850	37,640	38,470	39,810	37,340	36,630	40,730	41,340	35,760
291	A12	40,090	41,050	41,890	42,440	43,570	44,790	45,620	45,990	46,130	45,880	40,830
306	A6	14,580	14,210	14,440	14,590	14,710	15,310	16,100	16,080	16,050	16,230	12,310
308	A29	15,800	15,490	16,740	16,330	15,900	16,420	17,100	16,930	-	-	14,700
309	A29	5,130	5,170	5,230	4,910	4,960	5,260	5,630	5,610	5,600	5,720	4,760
310	A26	16,120	16,000	-	16,380	16,260	16,300	16,150	16,950	17,150	17,990	12,950

Table 6 - 7 Day (AADT)

C P No.	ROUTE No.	2010	2011	2012	2013	2014	2015	2016	2017	2018	2019	2020
311	A2	7,100	6,950	7,080	7,670	7,490	7,560	8,280	8,050	8,330	-	6,440
312	A2	5,750	-	6,490	5,150	5,870	6,320	7,210	-	-	-	6,460
315	B62	7,690	7,240	7,840	7,040	7,560	7,480	8,310	8,180	7,630	-	7,430
318	A44	6,900	6,210	6,240	5,600	6,390	6,390	7,050	6,390	-	-	-
321	A54	6,210	6,090	6,380	-	5,990	6,290	6,320	6,970	6,950	7,130	6,070
325	A29	6,430	6,090	6,110	6,360	6,350	6,300	6,830	6,990	-	-	-
331	B64	3,410	3,270	3,280	3,210	3,560	3,490	3,790	3,780	3,710	3,790	3,230
332	A2	2,910	2,520	2,430	2,040	2,120	2,360	2,140	-	-	-	2,680
353	A515	31,160	30,800	31,970	31,670	30,090	-	-	34,670	-	-	-
376	A2	15,030	15,160	15,320	15,170	-	15,640	16,760	16,550	-	-	13,490
391	A5	17,460	-	-	16,410	15,510	16,700	17,240	16,920	16,960	17,050	-
392	A2	14,060	-	-	-	-	13,730	13,990	14,130	14,260	14,440	6,930
405	A1	18,120	17,360	18,840	20,260	20,210	21,960	23,440	25,070	26,600	26,600	19,190
410	A1	-	-	-	27,110	28,150	28,980	30,570	31,490	31,540	32,520	23,680
418	A28	9,440	9,460	9,420	9,710	9,750	10,180	10,090	10,470	10,570	-	-
419	A1	20,400	21,650	22,230	22,530	23,820	25,280	26,250	27,340	28,560	28,600	20,640
442	A3	4,230	-	-	4,170	3,530	3,770	3,830	3,730	3,800	3,750	3,200
443	A2	11,940	11,600	-	11,460	12,200	12,270	11,920	12,220	12,090	12,260	9,650
444	A20	6,870	-	6,940	-	7,280	7,180	7,310	7,590	7,500	7,570	6,170
502	A2	36,620	35,580	-	-	35,010	36,590	36,350	36,330	35,970	36,280	27,470
507	A21	20,220	20,070	-	20,340	20,620	20,980	21,630	21,800	21,820	21,570	17,730
508	A48	10,420	10,210	10,100	10,120	10,460	10,500	10,680	10,540	10,610	10,850	9,190
510	A2	4,700	4,580	4,260	4,030	4,240	4,620	4,420	4,910	4,900	4,910	4,540
512	A22	8,730	8,760	8,730	8,240	9,090	9,390	9,200	9,660	9,750	9,760	8,010
513	A7	11,710	11,210	11,410	11,840	11,620	11,630	11,860	11,670	-	12,270	10,210
520	M1	51,770	51,710	52,530	52,320	53,190	54,920	56,210	58,920	59,410	60,830	43,740
522	A1	39,230	39,200	40,980	-	39,780	41,820	40,100	42,700	-	-	-
532	C297	3,360	3,240	3,080	3,180	3,440	3,530	3,630	3,720	3,440	3,820	2,920
536	A1	-	-	-	-	17,940	19,040	18,610	22,200	22,060	23,370	16,410
610	A5	11,620	11,880	11,870	12,150	12,770	12,840	12,440	13,870	14,330	14,520	10,980
612	A34	8,610	8,430	8,530	8,420	8,630	8,670	8,220	8,910	8,270	8,180	7,230
615	A4	4,260	4,110	3,920	3,880	4,000	3,730	3,840	3,940	3,930	4,060	3,170
617	A32	14,130	13,850	14,770	15,650	16,370	16,240	15,680	16,830	16,760	17,060	13,850
629	A4	11,660	11,630	-	-	11,460	11,550	11,280	12,240	11,790	11,630	9,670
632	B52	1,900	1,960	1,910	1,770	1,930	1,910	1,810	2,060	2,050	2,100	1,730
645	A5	20,440	21,210	21,170	21,130	21,640	22,650	21,990	23,030	23,700	-	-
648	A5	14,300	14,260	14,270	15,250	14,510	14,530	14,890	14,600	14,990	15,520	11,890
660	A5	14,860	15,310	15,450	15,060	15,490	15,900	15,500	16,790	17,210	17,440	13,640
665	A32	6,610	6,530	6,340	6,580	6,770	6,810	6,990	7,160	7,230	7,280	-
670	A3	4,570	4,310	4,510	4,500	4,450	4,400	4,310	4,680	4,680	4,770	3,830
674	A47	2,470	2,310	2,290	2,270	2,350	2,440	1,940	2,460	2,520	2,510	1,960
675	A5	6,980	7,330	7,100	7,670	7,820	8,170	8,120	8,820	9,060	9,080	7,110
789	A52	3,780	3,690	3,840	3,750	4,400	4,410	4,320	4,840	4,990	4,970	3,570
793	A2	28,670	-	-	-	26,790	26,320	27,380	29,210	29,140	28,830	22,900
794	A1	18,400	-	-	14,020	16,910	17,670	17,470	16,900	16,440	16,170	12,750

Table 6 - 7 Day (AADT)

C P No.	ROUTE No.	2010	2011	2012	2013	2014	2015	2016	2017	2018	2019	2020
797	A52	8,830	8,770	9,030	8,360	9,690	9,780	10,820	10,410	10,600	10,590	8,300
799	A52	19,470	-	19,440	19,240	19,460	19,300	18,730	19,580	19,490	19,650	16,950
800	A24	-	-	-	25,200	26,360	27,380	26,400	26,350	25,910	25,940	20,430
907	A2	14,500	14,240	13,990	13,800	13,960	14,510	14,760	14,590	14,480	14,560	11,140
908	A2	16,580	16,430	16,070	16,070	15,980	16,640	16,990	16,930	16,760	16,750	-
910	A2	18,630	17,620	17,110	17,290	17,570	18,250	18,450	18,490	18,140	18,150	13,780
918	A20	16,030	15,850	15,750	15,990	15,210	15,710	15,840	15,220	-	-	11,040
921	A20	16,770	16,360	16,340	16,620	16,160	16,610	16,850	16,190	-	-	11,390
922	A55	34,360	34,590	34,240	35,030	33,800	34,760	34,460	34,290	32,820	32,990	25,040
923	A6	-	-	-	-	-	-	-	-	-	20,660	14,480

Table 7 – Yearly variations in AADT (7 day) from 2016 - 2020

This table contains the Annual Average Daily Traffic flows (7 day) for each site for each year. The variation between each year for each site is given as a percentage of the previous year's value.

The sites are listed in order of Census Point Number for ease of reference.

Table 7 – Yearly variations in AADT (7 day) from 2016 - 2020											
C P No.	ROUTE No.	Location	ANNUAL AVERAGE DAILY TRAFFIC (AADT)								
			2016	% + or -	2017	% + or -	2018	% + or -	2019	% + or -	2020
101	B95	Antrim – M2, at Greystone Road	9,040	-	-	-	-	-	-	-	4,910
102	A6	Toome - Randalstown, at Drumbeg	19,960	1.55	20,270	-	-	-	-	-	1,410
109	A26	Nutts Corner - Moira, at Nutts Corner	13,070	3.29	13,500	-	-	-	-	-	-
110	M2	Rathbeg (Junction 6) – Dunsilly (Junction 1 on M22)	-	-	-	-	43,050	0.60	43,310	-18.68	35,220
111	M22	Dunsilly (Junction 1) – Ballygrooby (Junction 2)	-	-	-	-	20,900	0.33	20,970	-15.26	17,770
117	A2	Whitehead - Carrickfergus	7,020	4.27	7,320	1.23	7,410	-3.91	7,120	-6.04	6,690
119	A2	Larne - Ballygalley, at Blackcave Tunnel	3,130	4.47	3,270	-5.50	3,090	-6.80	2,880	-6.25	2,700
122	A6	Castledawson - Dungiven (North West of A31 near Roundabout)	14,780	3.79	15,340	-2.67	14,930	0.27	14,970	-19.91	11,990
123	A31	Moneymore Road, Magherafelt	11,350	-37.62	7,080	-0.85	7,020	2.28	7,180	-18.80	5,830
128	A31	Castledawson - Magherafelt (South West of Bowmans Road)	15,420	-25.10	11,550	-2.34	11,280	-4.26	10,800	-15.83	9,090
131	A36	Ballymena - Larne, at Moorfields	5,540	2.71	5,690	-4.22	5,450	3.85	5,660	-23.32	4,340
132	M2	Rathbeg (Junction 6) – Templepatrick (Junction 5)	-	-	-	-	45,940	0.89	46,350	-18.34	37,850
135	A8	Larne - Ballynure, at Craiginorne	1,820	-0.55	1,810	1.66	1,840	0.00	1,840	-14.67	1,570
149	A6	Belfast Road, Mallusk	3,860	1.30	3,910	5.12	4,110	-	-	-	-
151	A6	Between Templepatrick Roundabout & Kilmakee Roundabout	16,070	4.17	16,740	-2.75	16,280	-	-	-	-
159	B39	Seven Mile Straight, Ballyrobin	2,750	2.55	2,820	4.96	2,960	1.01	2,990	-20.07	2,390

Table 7 – Yearly variations in AADT (7 day) from 2016 - 2020

C P No.	ROUTE No.	Location	ANNUAL AVERAGE DAILY TRAFFIC (AADT)								
			2016	% + or -	2017	% + or -	2018	% + or -	2019	% + or -	2020
201	M1	Broadway (Junction 1) - Stockman's Lane (Junction 2)	90,590	1.13	91,610	-0.34	91,300	0.92	92,140	-40.35	54,960
202	M2	Fortwilliam Interchange – Outbound (Junction 1)	49,980	-0.02	49,970	-0.78	49,580	1.15	50,150	-19.10	40,570
203	M2	Fortwilliam Interchange – Inbound (Junction 1)	51,970	-0.13	51,900	-0.66	51,560	1.11	52,130	-20.95	41,210
204_1	M2	Greencastle (Junction 2) – Sandyknowes (Junction 4) (From Belfast)	34,980	1.00	35,330	0.74	35,590	0.51	35,770	-20.80	28,330
204_2	M2	Greencastle (Junction 2) – Sandyknowes (Junction 4) (To Belfast)	34,480	-	34,890	0.60	35,100	1.45	35,610	-19.38	28,710
205	M2	Sandyknowes (Junction 4) – Templepatrick (Junction 5)	48,010	1.25	48,610	0.16	48,690	1.58	49,460	-22.71	38,230
206	M5	Greencastle (Junction 2) - Whiteabbey	33,090	-1.09	32,730	-0.43	32,590	0.68	32,810	-17.74	26,990
207	A8	Sandyknowes (Junction 4) – Corr's Corner	15,300	1.50	15,530	1.87	15,820	2.15	16,160	-14.73	13,780
209	A2	Sydenham By-Pass, at George Best Belfast City Airport	59,900	-2.14	58,620	1.38	59,430	0.02	59,440	-32.87	39,900
212	A8	North of Corr's Corner, on dual carriageway	18,200	-	-	-	-	-	-	-	16,050
213	A12	Westlink, Belfast, South of Roder Street	97,120	0.04	97,160	-0.76	96,420	1.65	98,010	-40.35	58,460
221	A55	Upper Knockbreda Road, Belfast	34,010	-1.82	33,390	-2.85	32,440	3.30	33,510	-28.17	24,070
227	M1	Stockman's Lane Junction (above roundabout)	69,250	1.81	70,500	0.13	70,590	1.77	71,840	-46.20	38,650
230	M1	Blacks Road on – slip (Junction 3)	20,850	-0.48	20,750	-0.72	20,600	0.53	20,710	-12.36	18,150
231	M1	Blacks Road off – slip (Junction 3)	18,670	1.93	19,030	-1.79	18,690	2.51	19,160	-16.02	16,090
234	B101	Pond Park Road, Lisburn	8,090	2.60	8,300	-0.36	8,270	0.97	8,350	-30.30	5,820
235	A3	Moira Road, Lisburn, West of Lissue Industrial Estate	11,600	3.62	12,020	-0.50	11,960	-0.42	11,910	-18.30	9,730
290	A12	Westlink, Clifton Street, towards M1	37,340	-1.90	36,630	11.19	40,730	1.50	41,340	-13.50	35,760
291	A12	Westlink, Clifton Street, towards M2	45,620	0.81	45,990	0.30	46,130	-0.54	45,880	-11.01	40,830
306	A6	Dungiven - Londonderry, East of B74	16,100	-0.12	16,080	-0.19	16,050	1.12	16,230	-24.15	12,310
308	A29	Coleraine - Limavady, at Fernlester	17,100	-0.99	16,930	-	-	-	-	-	14,700

Table 7 – Yearly variations in AADT (7 day) from 2016 - 2020

C P No.	ROUTE No.	Location	ANNUAL AVERAGE DAILY TRAFFIC (AADT)								
			2016	% + or -	2017	% + or -	2018	% + or -	2019	% + or -	2020
309	A29	Coleraine - Garvagh, South of B66	5,630	-0.36	5,610	-0.18	5,600	2.14	5,720	-16.78	4,760
310	A26	Coleraine - Ballymoney, South East of Ring Road	16,150	4.95	16,950	1.18	17,150	4.90	17,990	-28.02	12,950
311	A2	Coleraine - Portstewart, North of B185	8,280	-2.78	8,050	3.48	8,330	-	-	-	6,440
312	A2	Portrush – Portstewart, at Portrush	7,210	-	-	-	-	-	-	-	6,460
315	B62	Ballymoney - Portrush, North of A26	8,310	-1.56	8,180	-6.72	7,630	-	-	-	7,430
318	A44	Ballycastle - Armoyle, East of B67	7,050	-9.36	6,390	-	-	-	-	-	-
321	A54	Coleraine - Kilrea, South of A29	6,320	10.28	6,970	-0.29	6,950	2.59	7,130	-14.87	6,070
325	A29	Coleraine Ring Road, between A29 - B185	6,830	2.34	6,990	-	-	-	-	-	-
331	B64	Dungiven – Garvagh, at Dungiven	3,790	-0.26	3,780	-1.85	3,710	2.16	3,790	-14.78	3,230
332	A2	Limavady – Magilligan, North of B69	2,140	-	-	-	-	-	-	-	2,680
353	A515	Foyle Bridge, Londonderry	-	-	34,670	-	-	-	-	-	-
376	A2	A2 Ballykelly Road, Limavady	16,760	-1.25	16,550	-	-	-	-	-	13,490
391	A5	Victoria Road, Londonderry, at Bolies	17,240	-1.86	16,920	0.24	16,960	0.53	17,050	-	-
392	A2	Duke Street, Londonderry	13,990	1.00	14,130	0.92	14,260	1.26	14,440	-52.01	6,930
405	A1	Dublin Road, Newry	23,440	1.33	25,070	6.10	26,600	0.00	26,600	-27.86	19,190
410	A1	Dromore – Banbridge, South of Old Banbridge Road	30,570	3.01	31,490	0.16	31,540	3.11	32,520	-27.18	23,680
418	A28	Armagh - Newry, at Markethill	10,090	3.77	10,470	0.96	10,570	-	-	-	-
419	A1	Loughbrickland – Newry, North of Beechill Road	26,250	4.15	27,340	4.46	28,560	0.14	28,600	-27.83	20,640
442	A3	Monaghan Road, Middletown, Co Armagh	3,830	-2.61	3,730	1.88	3,800	-1.32	3,750	-14.67	3,200
443	A2	Rostrevor Road, Warrenpoint, Co Down	11,920	2.52	12,220	-1.06	12,090	1.41	12,260	-21.29	9,650
444	A20	Portaferry Road, Kircubbin, Co. Down	7,310	3.83	7,590	-1.19	7,500	0.93	7,570	-18.49	6,170

Table 7 – Yearly variations in AADT (7 day) from 2016 - 2020

C P No.	ROUTE No.	Location	ANNUAL AVERAGE DAILY TRAFFIC (AADT)								
			2016	% + or -	2017	% + or -	2018	% + or -	2019	% + or -	2020
502	A2	Belfast - Bangor, at Cultra, East of Folk Museum	36,350	-0.06	36,330	-0.99	35,970	0.86	36,280	-24.28	27,470
507	A21	Bangor Road, Newtownards	21,630	0.79	21,800	0.09	21,820	-1.15	21,570	-17.80	17,730
508	A48	Donagadee Road, Newtownards	10,680	-1.31	10,540	0.66	10,610	2.26	10,850	-15.30	9,190
510	A2	Donaghadee - Millisle, at Ballyvester	4,420	11.09	4,910	-0.20	4,900	0.20	4,910	-7.54	4,540
512	A22	Comber - Killyleagh, at Comber	9,200	5.00	9,660	0.93	9,750	0.10	9,760	-17.93	8,010
513	A7	Belfast Road, Downpatrick, at Quoile	11,860	-1.60	11,670	-	-	-	12,270	-16.79	10,210
520	M1	Blacks Road (Junction 3) - Saintfield Road (Junction 6)	56,210	4.82	58,920	0.83	59,410	2.39	60,830	-28.09	43,740
522	A1	Lisburn - Hillsborough (at Harry's Road)	40,100	6.48	42,700	-	-	-	-	-	-
532	C297	Ballynahinch Road, Lisburn	3,630	2.48	3,720	-7.53	3,440	11.05	3,820	-23.56	2,920
536	A1	A1 Newry, North of A27 Junction	18,610	19.29	22,200	-0.63	22,060	5.94	23,370	-29.78	16,410
610	A5	Omagh – Ballygawley, South of B122 (past junction of U1306)	12,440	11.50	13,870	3.32	14,330	1.33	14,520	-24.38	10,980
612	A34	Lisnaskea - Maguiresbridge (Lisnagole Road near St Mary's Primary School)	8,220	8.39	8,910	-7.18	8,270	-1.09	8,180	-11.61	7,230
615	A4	Enniskillen - Belcoo (East of Letterbreen near Moybrone/ Station Road Cross Roads)	3,840	2.60	3,940	-0.25	3,930	3.31	4,060	-21.92	3,170
617	A32	Enniskillen – Irvinestown (North of Cherrymount Roundabout)	15,680	7.33	16,830	-0.42	16,760	1.79	17,060	-18.82	13,850
629	A4	Enniskillen - Fivemiletown (West of B514 at Cultiagh)	11,280	8.51	12,240	-3.68	11,790	-1.36	11,630	-16.85	9,670
632	B52	Garrison - Belleek (South of Farancassidy Cross Roads at Brollagh School)	1,810	13.81	2,060	-0.49	2,050	2.44	2,100	-17.62	1,730
645	A5	Omagh By-Pass, at footbridge	21,990	4.73	23,030	2.91	23,700	-	-	-	-
648	A5	Strabane By-Pass (Barnhill Road West of Derry Road)	14,890	-1.95	14,600	2.67	14,990	3.54	15,520	-23.39	11,890
660	A5	Omagh – Ballygawley, South of Crevenagh Road Roundabout	15,500	8.32	16,790	2.50	17,210	1.34	17,440	-21.79	13,640
665	A32	Enniskillen Road, Irvinestown	6,990	2.43	7,160	0.98	7,230	0.69	7,280	-	-

Table 7 – Yearly variations in AADT (7 day) from 2016 - 2020

C P No.	ROUTE No.	Location	ANNUAL AVERAGE DAILY TRAFFIC (AADT)								
			2016	% + or -	2017	% + or -	2018	% + or -	2019	% + or -	2020
670	A3	Clones Road, Cavan side of B533	4,310	8.58	4,680	0.00	4,680	1.92	4,770	-19.71	3,830
674	A47	Boa Island Road, Belleek	1,940	26.80	2,460	2.44	2,520	-0.40	2,510	-21.91	1,960
675	A5	A5 Tullyvar Road, Ballygawley	8,120	8.62	8,820	2.72	9,060	0.22	9,080	-21.70	7,110
789	A52	Ballyutoag Road, Co. Antrim	4,320	12.04	4,840	3.10	4,990	-0.40	4,970	-28.17	3,570
793	A2	Shore Road South of Jordanstown Road	27,380	6.68	29,210	-0.24	29,140	-1.06	28,830	-20.57	22,900
794	A1	Lisburn Road at Dunluce Avenue	17,470	-3.26	16,900	-2.72	16,440	-1.64	16,170	-21.15	12,750
797	A52	Crumlin Road, Belfast side of Horseshoe bend	10,820	-3.79	10,410	1.83	10,600	-0.09	10,590	-21.62	8,300
799	A52	Crumlin Road at Ingledene Park	18,730	4.54	19,580	-0.46	19,490	0.82	19,650	-13.74	16,950
800	A24	Ormeau Road at Knockbreda Park	26,400	-0.19	26,350	-1.67	25,910	0.12	25,940	-21.24	20,430
907	A2	Belfast Road, Bangor, Bangor side of Ballyrobert Road Junction	14,760	-1.15	14,590	-0.75	14,480	0.55	14,560	-23.49	11,140
908	A2	Belfast Road, Bangor, Belfast side of Ballyrobert Road Junction	16,990	-0.35	16,930	-1.00	16,760	-0.06	16,750	-	-
910	A2	Bangor Road Cultra, before Whinney Hill	18,450	0.22	18,490	-1.89	18,140	0.06	18,150	-24.08	13,780
918	A20	Upper Newtownards Road, Belfast, at bus-stop opposite Summerhill Avenue (Outbound)	15,840	-3.91	15,220	-	-	-	-	-	11,040
921	A20	Upper Newtownards Road, Belfast, at Stormont entrance (Inbound)	16,850	-3.92	16,190	-	-	-	-	-	11,390
922	A55	Knock Road, Castlereagh, at Shandon Park	34,460	-0.49	34,290	-4.29	32,820	0.52	32,990	-24.10	25,040
923	A6	Toome to Randalstown	-	-	-	-	-	-	20,660	-29.91	14,480

Table 8 - Variation In Traffic Flow (7 day) between 2019 and 2020

The change in traffic flow (7 day) 2019 – 2020 has been calculated for all sites and listed by road classification as shown in the table below. Route A12 (Westlink) was included with the motorway sites as it connects two motorways. The following table shows the findings.

Table 8		
Route type	% Change 2019 – 2020	No. of comparable sites
Motorways (incl. A12 Westlink)	-26.33	17
A Class routes	-23.55	49
B Class routes	-23.56	4
C Class and Unclassified routes	-23.56	1
Overall Total	-24.97	69

Please note the information is based on the **best available** data gathered during the course of the year. It should be noted that, due to the Covid-19 pandemic, traffic figures are generally much lower than a typical year. The ‘% Change’ in traffic flows can therefore not be considered as representative of a typical year.

APPENDIX A

Location Details of Historic Counter Sites

Table 9 - Location Details of Historic Counter Sites (listed by Road Number)

This table is included as a “location finder” for those counter sites which used to be operational but were decommissioned prior to 2017. The most recent data for these counter sites, which are listed below, can be found in the 2016 Traffic and Travel Information Report, (see link below).

<https://www.infrastructure-ni.gov.uk/publications/traffic-and-travel-information-incorporating-annual-traffic-census-and-variations>

The sites are listed by route number order, (i.e. the road classification number).

Route	CP No	Divn.	Location	Channel 1	Channel 2	Easting	Northing
A1	208	East	Lisburn Road, Belfast, at King's Hall	To Belfast	From Belfast	331477	370792
A1	411	South	Banbridge By-Pass, North of Old Manse Road	To Dromore	To Newry	314412	345867
A1	434	South	Newry – Dundalk, North of Border	To Newry	To Border	307448	319598
A1	437	South	Newry By-Pass (Stage 1)	To Border	To Belfast	308386	328707
A1	438	South	Newry By-Pass (Stage 2)	To Border	To Belfast	307509	328004
A1	439	South	Newry By-Pass (Stage 3)	To Belfast	To Border	307079	325875
A1	446	South	A1-N1 near border with Co Louth	Northbound	Southbound	307179	320195
A1	524	East	Belfast - Lisburn, at Derriaghy	To Belfast	From Belfast	328013	367446
A1	525	East	Belfast - Lisburn, at Lambeg	To Belfast	From Belfast	327589	366760
A1	530	East	Hillsborough By-Pass, North of Moira Road	To Lisburn	To Dromore	323856	359314
A2	118	East	Carrickfergus - Belfast	To Belfast	To Carrickfergus	339376	386417
A2	210	East	Shore Road, Belfast, at Shore Crescent	To Belfast	From Belfast	334144	378825
A2	301	North	Limavady - Londonderry, at Greysteel	To Londonderry	To Limavady	258305	421443
A2	302	North	Limavady - Londonderry, at Roe Bridge	To Limavady	To Ballykelly	266711	422932
A2	305	North	Limavady - Magilligan, South of B201	To Limavady	To Magilligan	268337	424369

Traffic and Travel Information 2020

Route	CP No	Divn.	Location	Channel 1	Channel 2	Easting	Northing
A2	319	North	Cushendall - Cushendun, South of B92	To Cushendall	To Ballycastle	322713	430747
A2	327	North	Bushmills - Ballycastle, at Bushmills	To Bushmills	From Bushmills	294118	441241
A2	342	North	Dunluce Road, Portrush	To Portrush	From Portrush	288142	440137
A2	350	North	Craigavon Bridge, Londonderry (upper deck)	To City Centre	To Duke Street	243808	416030
A2	351	North	Craigavon Bridge (lower deck)	To Londonderry	From Londonderry	416204	243588
A2	354	North	Strand Road, Londonderry	To City Centre	To Foyle Bridge	243823	418546
A2	356	North	Queen's Quay, Londonderry	To City Centre	To Queen's Quay Roundabout	243489	417537
A2	368	North	Foyle Embankment, Between Foyleside and Bus Station	To Guildhall Roundabout	To Craigavon Bridge	243815	416567
A2	370	North	Culmore Road, Londonderry, at St.Peters Church	To City Centre	To Foyle Bridge	244496	419755
A2	371	North	Culmore Road, Londonderry, at Heathfield	To City Centre	To Culmore	244624	419887
A2	373	North	Limavady Road, Londonderry, at Gransha	To City Centre	To Limavady	246509	418492
A2	374	North	Limavady Road, Londonderry, at Caw Brae	To City Centre	To Caw Roundabout	245983	417907
A2	381	North	Buncrana Road, Londonderry, at Pennyburn	To City Centre	To Buncrana	243824	418701
A2	383	North	Buncrana Road, Londonderry, at Whitehouse	To City Centre	To Buncrana	241601	420426
A2	394	North	Limavady By-Pass, Limavady	To Coleraine	To Ballykelly	266699	423450
A2	421	South	Warrenpoint Road, Newry	To Newry	To Warrenpoint	309142	324923
A2	422	South	Newcastle - Annalong, at Bloody Bridge	To Newcastle	To Annalong	338889	327195
A2	501	East	Hollywood By-Pass, East of Belfast Road	To Belfast	To Bangor	338994	377865
A2	505	East	Belfast - Bangor, at Springhill	To Bangor	To Belfast	348081	380297
A2	506	East	Bangor Ring Road, at Clandeboye	From Belfast	To Belfast Road	349205	380429
A2	516	South	Dundrum - Clough	To Clough	To Dundrum	340849	337000
A2	903	East	Belfast Road Bangor, at Coach Hill Bend	To Bangor	N/A	345787	380329

Traffic and Travel Information 2020

Route	CP No	Divn.	Location	Channel 1	Channel 2	Easting	Northing
A2	905	East	Belfast Road Bangor, Before Springhill Junction	To Bangor	N/A	348488	380584
A2	906	East	Belfast Road Bangor, Bangor side of Springhill	To Belfast	To Bangor	349038	380933
A2	915	East	Bangor Road, West of Ballymoney Road at Devil's Elbow	To Belfast	N/A	344028	381052
A3	401	South	Northway, Portadown, South of Seagoe Road link	To Portadown	From Portadown	301917	355096
A3	402	South	Portadown - Armagh, at Stonebridge	To Armagh	To Portadown	294869	349658
A3	407	South	Lake Road, Craigavon, East of Central Way	To Lurgan	To Portadown	304954	356828
A3	409	South	Magherlin - Moira	To Magheralin	To Moira	313854	359557
A3	415	South	Armagh Road, Portadown	To Portadown	To Armagh	299334	351675
A3	424	South	Armagh - Middleton, at Milford	To Armagh	To Border	285593	343478
A4	416	South	Portadown - Dungannon, at The Birches	To Portadown	To M1	295115	359769
A4	607	West	Ballygawley Road, West of Woodlough Road	To M1	To Ballygawley	273142	360492
A4	646	West	Enniskillen Throughpass (Wellington Road, West of Enniskillen Bridge)	To Ballygawley	To Border	223774	343917
A4	650	West	Dungannon (Woodlough Road East of Old Eglisk Road)	To Omagh	To Belfast	279594	359559
A4	662	West	Crossowen Road, near Augher, Co. Fermanagh	To Augher	To Clougher	255475	352857
A4	669	West	Enniskillen Road, Fivemiletown at lay-by	To Enniskillen	To Fivemiletown	243250	346958
A4	676	West	Annaghilla Road, between roundabout and U317	To Belfast	To Enniskillen	262579	356724
A4	677	West	New dual carriageway, Belfast bound, near lay-by west of Mullaghbane Road	To Belfast	To Enniskillen	273661	360000
A4	678	West	New dual carriageway, Belfast bound, at lay-by south west of Craveny Road	To Belfast	To Enniskillen	265408	357782
A5	390	North	Londonderry - Strabane, at New Buildings	To Strabane	To City Centre	240825	412268
A5	623	West	Sion Mills - Strabane, at Ballyfatten	To Sion Mills	To Strabane	233846	393990
A5	626	West	Omagh - Newtownstewart, at Conneywarren	To Omagh	To Newtownstewart	243567	374251
A5	644	West	Omagh Throughpass (West of Dublin Road at Academy)	To Enniskillen	To Ballygawley	245389	372344

Traffic and Travel Information 2020

Route	CP No	Divn.	Location	Channel 1	Channel 2	Easting	Northing
A5	649	West	Omagh By-Pass, at Gortrush	To Londonderry	To Belfast	244028	373147
A5	652	West	Aughnacloy - Monaghan (North of River Blackwater)	To Monaghan	To Aughnacloy	266566	350849
A5	653	West	Ballygawley - Omagh (North of Balygawley Roundabout)	From Omagh	To Omagh	262666	357244
A5	657	West	Newtownstewart By-Pass (West of Plumbridge Road, opposite lay-by)	To Omagh	To Strabane	240060	386303
A5	659	West	Strabane By-pass Stage 2	To Londonderry	From Londonderry	233647	397562
A5	663	West	Victoria Road, Strabane, Co. Tyrone	To Londonderry	To Strabane	237156	403240
A6	103	North	Randalstown Road, Antrim	To Antrim	To Randalstown	313595	387407
A6	106	North	Belfast Road, Antrim	To Antrim	To Templepatrick	317102	385429
A6	125	West	Castledawson - Dungiven, at Ranaghan	To Castledawson	To Dungiven	282500	400596
A6	133	West	Castledawson By - Pass, at Bridge over Moyola	To Londonderry	To Belfast	293792	392310
A6	150	West	Toome By - Pass, West of Bann Bridge	To Londonderry	From Castledawson	298437	391250
A6	157	North	Belmont Road, Muckamore	To Dublin Road	To Belfast Road	315909	385774
A6	211	East	Antrim Road, Belfast, at Zoo	To Belfast	From Belfast	333233	380501
A6	360	North	Dungiven Road, Londonderry, at Drumahoe East	To City Centre	To Dungiven	247746	413511
A6	362	North	Dungiven Road, Londonderry, at Altnagelvin Roundabout	To City Centre	To Drumahoe	245073	415727
A6	363	North	Dungiven Road, Londonderry, at Rosstown Roundabout	To City Centre	To Dungiven	244593	416516
A6	366	North	Claudy, Dungiven side of A6/B74 junction	To Londonderry	To Dungiven	256509	409178
A6	798	East	Antrim Road at Cavehill Road Junction	To City Centre	To Antrim	333325	376369
A7	537	South	Saintfield Road, Crossgar	To Crossgar	To Saintfield	344671	353300
A8	120	North	Larne - Ballynure, at Drumnahoe	To Larne	To Belfast	337247	400825
A8	233	East	Belfast Road, North of Coleman's Corner	To Belfast	From Belfast	331288	390001
A12	345	East	Westlink at Divis Street (To M2)	To M2	On Slip	333214	374401
A12	346	East	Westlink at Divis Street (To M1)	To M1	Off Slip	333226	374401

Traffic and Travel Information 2020

Route	CP No	Divn.	Location	Channel 1	Channel 2	Easting	Northing
A20	216	East	Upper Newtownards Road, Belfast, at Quarry Inn	To Belfast	From Belfast	343728	374032
A20	509	South	Portaferry Road, Newtownards	To Newtownards	To Portaferry	350096	373072
A20	796	East	Upper Newtownards Road	To City Centre	To Dundonald	337035	374047
A21	511	South	Newtownards Road, Comber	To Newtownards	To Comber	347594	369952
A22	217	East	Comber Road, Belfast, South East of New Line	To Belfast	To Comber	342520	372789
A23	218	East	Ballygowan Road, Belfast, at Roselawn	To Belfast	To Ballygowan	338808	370247
A23	792	East	Castlereagh Road South West of Orby Street	To Belfast City Centre	From Belfast	337201	372315
A24	515	South	Clough - Ballynahinch, at Castlenavan	To Ballynahinch	To Clough	340385	345934
A24	531	South	Belfast Road, Ballynahinch	To Belfast	From Belfast	336852	354542
A24	787	East	Belfast, Saintfield Road (near Knockbracken Road at KFC)	To Belfast	To Carryduff	336247	367000
A24	924	East	Ormeau Road at University Avenue	To Belfast City Centre	From Belfast	334342	372739
A25	423	South	Newry - Camlough, West of Camlough Road Roundabout at Egyptian Arch	To Newry	To Camlough	306976	327525
A25	441	South	Rathfriland Road, Co. Down	To Newry	To Rathfriland	312268	331560
A25	514	South	Downpatrick - Clough, at Tullymurry	To Downpatrick	To Clough	348323	344155
A25	518	South	Rathfriland Road, Castlewellan	To Castlewellan	To Rathfriland	331932	334955
A25	519	South	Castlewellan - Clough, at Magherasaul	To Clough	To Castlewellan	337472	338100
A26	104	North	Antrim - Ballymena, North of Dunsilly	To Ballymena	To Antrim	313671	390272
A26	105	North	Ballymena Road, Antrim	To Antrim	To Ballymena	313675	389702
A26	108	North	International Airport - Nutts Corner (North of A52 Nutts Corner Roundabout)	To International Airport	To Nutts Corner	318960	378770
A26	113	North	Ballymena - Ballymoney, North of M2	To Ballymena	To Ballymoney	308213	407721
A26	130	North	Ballymena - Lame, at Ballykeel	To Ballymena	To Lame	312126	401913
A26	153	North	Old Stone Road, Muckamore	To Killead	To Antrim	317153	382531

Traffic and Travel Information 2020

Route	CP No	Divn.	Location	Channel 1	Channel 2	Easting	Northing
A26	316	North	Ballymoney By-Pass, East of Ballybogy Road	To Belfast	To Coleraine	294448	427008
A26	317	North	Ballymoney - Ballymena, South East of Ballymoney	To Belfast	To Ballymoney	298043	424665
A26	412	South	Banbridge - Lurgan, North of Broken Bridge	To Banbridge	To Lurgan	311329	349478
A26	791	South	Moir Road, near Moira, Co. Down	Southbound	Northbound	316082	365308
A27	414	South	Tandragee - Portadown, South of B78	To Tandragee	To Portadown	300983	349600
A27	420	South	Armagh Road, Newry	To Newry	To Armagh	307838	327983
A28	655	West	Aughnacloy – Caledon (West of Glencrew Road)	To Caledon	To Aughnacloy	267648	351607
A29	124	West	Maghera Road, Tobermore	To Tobermore	To Maghera	283743	397619
A29	126	West	Maghera - Swatragh (at Grillagh Picnic Area, North of B75)	To Swatragh	To Maghera	285893	403416
A29	313	North	Portrush - Ballysally Roundabout	To Portrush	To Coleraine	285247	435562
A29	320	North	Coleraine Ring Road, at Sandelford Bridge	To Limavady	To Portrush	285153	431499
A29	322	North	Coleraine Ring Road, between A26 - B67	To Limavady	To Portrush	286476	432478
A29	323	North	Coleraine Ring Road, between B67 - B17	To Limavady	To Portrush	286582	432856
A29	324	North	Coleraine Ring Road, between B17 - A29	To Limavady	To Portrush	286082	434049
A29	417	South	Armagh - Keady	To Armagh	To Keady	287037	342221
A29	440	South	Armagh Road, Armagh, Co. Armagh	To Moy	To Armagh	286354	348455
A29	603	West	Dungannon to Cookstown (at graveyard North of Drumglass High School)	To Dungannon	To Cookstown	279727	363647
A29	606	West	Dungannon to Moy (South of Stangmore Roundabout)	To M1	To Moy	282031	359889
A29	630	West	Dungannon Road, Cookstown	To Dungannon	To Cookstown	281207	376088
A29	656	West	Moneymore - Cookstown (South of Moneymore at lay-by)	To Cookstown	To Moneymore	285257	382889
A29	668	West	Desertmartin Road, Near Moneymore, Co. Londonderry	To Moneymore	To Desertmartin	285745	386713
A30	790	East	Glenavy Road, Co. Antrim	To Lisburn	To Glenavy	320424	368915

Traffic and Travel Information 2020

Route	CP No	Divn.	Location	Channel 1	Channel 2	Easting	Northing
A32	614	West	Enniskillen - Swanlinbar Road (South of A4 junction)	To Enniskillen	To Border	220658	341218
A32	619	West	Omagh - Dromore, North East of B4	To Omagh	To Dromore	238413	366520
A32	620	West	Irvinestown - Dromore (Irvinestown at Top Filling Station)	To Irvinestown	To Dromore	224524	358602
A32	666	West	Clanabogan Road, Omagh	To Omagh	To Dromore	224524	358602
A34	613	West	Lisnaskea - Newtownbutler (North West of B36)	To Lisnaskea	To Newtownbutler	238687	330266
A35	621	West	Kesh - Pettigoe, at Letterkeen	To Kesh	From Kesh	217932	363961
A35	672	West	Pettigo Road, Kesh	To Kesh	To Pettigo	214040	366517
A36	156	North	Moorfields Road, Ballymena	To Ballymena	To Larne	314191	401214
A37	304	North	Limavady - Coleraine, West of B66	To Limavady	To Coleraine	268380	423330
A37	307	North	Coleraine - Limavady, at Dunderg	To Coleraine	To Limavady	283371	429646
A38	624	West	Strabane - Lifford (at Bridge)	To Strabane	To Border	233547	398256
A40	359	North	Letterkenny Road, Londonderry East of Braehead Road	To City Centre	To Letterkenny	241819	415490
A42	112	North	Galgorm Road, Ballymena	To Ballymena	To Galgorm	309271	402487
A42	115	North	Ballymena - Broughshane, at Eaton Park	To Ballymena	To Broughshane	312684	404738
A42	163	North	Parkway, Ballymena	To Thomas Street	To Ballymoney Road	310915	403868
A42	667	West	Carricknakielt Road, Maghera	To Gulladuff	To Maghera	286563	400029
A42	673	West	Moyagall at Claddy angling club	To Maghera	To Claddy	294806	403026
A43	114	North	Cushendall Road, Ballymena	To Ballymena	To Cushendall	311347	405432
A43	395	North	Glenravel Road, Co. Antrim	To Ballymena	To Cargin	315810	416863
A44	328	North	Ballymena - Ballycastle, North of A26	To Ballycastle	To Ballymena	304557	420087
A45	604	West	Dungannon - Coalisland (North of Lurgaboy Lane)	To Dungannon	To Coalisland	280191	363666
A45	605	West	Coalisland - M1, at Tamnamore	To Coalisland	To M1	287132	361921
A46	616	West	Enniskillen - Belleek (near entrance to Brookview Rise)	To Enniskillen	To Belleek	222881	344454

Traffic and Travel Information 2020

Route	CP No	Divn.	Location	Channel 1	Channel 2	Easting	Northing
A46	661	West	Lower Lough Erne, Shore Road, Co. Fermanagh	To Enniskillen	To Belleek	221357	345674
A46	671	West	Shore Road, Belleek	To Belleek	To Enniskillen	195000	358284
A47	658	West	Kesh to Belleek (Kesh side of Boa Island)	To Belleek	To Kesh	214550	364640
A50	413	South	Banbridge - Gilford, at Lawrencetown	To Banbridge	To Gilford	310649	348994
A50	517	South	Castlewellan - Newcastle	To Newcastle	To Castlewellan	337139	333064
A54	127	West	Portglenone - Bellaghy (near Portglenone)	To Portglenone	To Bellaghy	297165	403635
A54	329	North	Kilrea - Coleraine, at Kilrea	To Kilrea	To Coleraine	292503	413276
A55	220	East	Shaws Bridge, Belfast	To Belfast	From Belfast	332258	369408
A55	222	East	Parkway, Belfast	To Belmont Road	To Holywood Road	338583	374764
A55	795	East	Stockmans Lane North West of Boucher Road	Northbound	Southbound	331100	371178
A55	923	East	Belvoir Road at Newtownbreda High School	To Milltown Road	To Saintfield Road	33481	369527
A57	107	North	International Airport – Templepatrick (East of A26 Killead Roundabout)	To International Airport	To Templepatrick	317901	381960
A57	129	North	International Airport - Templepatrick, at Airport	To Templepatrick	To International Airport	317367	381581
A57	148	North	Ballyclare Road, Templepatrick	To Ballyclare	To Templepatrick	323536	385947
A57	154	North	Dublin Road, Antrim	To Antrim	To International Airport	314397	384314
A76	408	South	Lough Road, Lurgan South of M1	To Lurgan	To M1	306771	360148
A101	911	East	New Link Road at the rear of B&Q, Sprucefield	To Hillsborough Road	To M1	325241	361876
A501	788	East	Falls Road between Springfield and Broadway, Belfast	To Belfast City Centre	To Broadway	331574	373364
A505	601	West	Cookstown - Omagh, West of Creggan Cross	To Omagh	To Cookstown	262071	378678
A505	628	West	Omagh - Cookstown (West of Knocknamoe near T.C Autos)	To Omagh	To Cookstown	246925	373318
A505	664	West	Drum Road, Cookstown	To Omagh	To Cookstown	277682	377467
A509	651	West	Derrylin - Belturbet (Aghalane Bridge near Killymackan Lough)	To Cavan	To Derrylin	233539	320519
A509	654	West	Enniskillen - Bellanaleck (South of A4 and Sillees River)	To Enniskillen	To Bellanaleck	223092	341178

Traffic and Travel Information 2020

Route	CP No	Divn.	Location	Channel 1	Channel 2	Easting	Northing
A512	523	East	McKinstry Road, Dunmurry, South of Cutts	To Belfast	To Lisburn	327469	367712
A513	529	East	Wilmar Road, Dunmurry	To Belfast	To Lisburn	327247	367393
A514	377	North	Crescent Link, Londonderry, at Caw	To Caw Roundabout	To Altnagelvin Roundabout	245166	415909
A515	372	North	Madams Bank Road, Londonderry	To City Centre	To Foyle Bridge	244521	419912
B2	426	South	Moyraverty (Craigavon) - Ballynaghy	To Craigavon	From Craigavon	304050	354061
B3	428	South	Keady, Lake Road	To Keady	To Border	283616	333388
B18	121	North	Toome - Castledawson, at Toome Bridge	To Toome	To Castledawson	298831	390867
B18	164	North	Roguary Road, Toomebridge	To Toome	To Moneyglass	299531	391343
B23	527	East	Hillhall Road, Lisburn, near Ballyaghlis	To Belfast	To Lisburn	330049	364871
B46	643	West	Gortin - Greencastle (Crockanboy Road, South of Rousky)	To Gortin	To Greencastle	255611	384722
B49	625	West	Dunnamanagh - Claudy (At Donemana Primary School)	To Dunnamanagh	To Claudy	244738	403518
B50	627	West	Drumquin Road, Omagh	To Omagh	To Drumquin	242932	373910
B52	136	North	Junction with A42 - Junction with B18	To Randalstown	To Portglenone	300103	399453
B59	160	North	Ballymena Road, Doagh	To Ballymena	To Doagh	321310	393349
B62	333	North	Ballymoney Finvoy Road, South of Bann Road	To Ballymoney	To Rasharkin	295084	424147
B64	137	North	Junction with B64 - Junction with B93	To Cullybackey	To Rasharkin	301253	408995
B64	330	North	Garvagh Road, Kilrea, West of New Road	To Kilrea	To Garvagh	292172	412596
B66	314	North	Ballymoney - Limavady, Bann Road, East of B62	To Ballymoney	To Garvagh	294327	424433
B68	303	North	Limavady - Dungiven, South of Limavady	To Limavady	To Dungiven	268588	419900
B72	622	West	Victoria Bridge - Castledearg (West of Urbaireagh Road)	To Castledearg	To A5	234777	390081
B82	618	West	Enniskillen - Kesh (North of A32 at Trory Parish Church)	To Enniskillen	To Kesh	223301	349307
B83	611	West	Omagh - Fintona (Seskinore Road, South of A5)	To Omagh	To Fintona	246801	369131
B95	232	East	Ballyclare Hillhead Road, junction with A57 - junction with A8	To Ballyclare	From Ballyclare	329621	389986

Traffic and Travel Information 2020

Route	CP No	Divn.	Location	Channel 1	Channel 2	Easting	Northing
B95	925	East	Hightown Road, Glengormley at Secondary School	To Glengormley	From Glengormley	331239	381873
B101	158	North	Dundrod Road, Nutts Corner	To Dundrod	To Nutts Corner	319797	377731
B102	223	East	Stewartstown Road, Belfast, at Kells Avenue	To Belfast	From Belfast	328783	370688
B103	224	East	Upper Malone Road, Belfast, at Lady Dixon Park	To Belfast	From Belfast	330617	367203
B103	528	East	Drumbeg Road, near Lisburn	To Belfast	To Lisburn	330689	366557
B108	633	West	Kinawley-Derrylin (at Stragowna Primary School)	To Kinawley	To Derrylin	223727	330488
B120	139	North	Larne, Old Glenarm Road, Cairncastle	To Larne	To Ballygalley	337739	406200
B127	634	West	Derrylin - Lisnaskea (North of Drumguiff Cross Roads at bungalow)	To Drumguiff	To Lisnaskea	235177	330506
B135	427	South	Junction with A29 - Cullyhanna	To Newtownhamilton	To Cullyhanna	292146	323676
B148	138	North	Junction with A2 - Junction with A8	To Carncastle	To Larne	336718	404953
B162	631	West	Cookstown - Lough Fea (near Ballynagilly Road U715)	To Cookstown	From Cookstown	278147	383649
B170	503	East	Ballysallagh Road, Bangor	To A2	To Craigantlet	347050	378963
B185	326	North	Coleraine - Portstewart, North of A29	To Coleraine	To Portstewart	283688	437401
B194	380	North	Racecourse Road, Londonderry, at New Street	To City Centre	To Shantallow	243512	419122
B506	236	East	Ravenhill Road, Belfast	To Belfast	From Belfast	335030	372321
B507	355	North	Branch Road, at Branch Road Roundabout	To City Centre	To Bunrana Road	242293	419671
B513	743	East	O'Neill Road Newtownabbey between Church Road and Antrim Road	To Antrim Road	To Church Road	332948	381799
B518	155	North	Stiles Way, Antrim	To Ballymena Road	To Steeple Road	314560	388307
B518	165	North	Ballycraig Road Muckamore, Antrim (at community centre)	To Belfast Road	To Ballycraig Road	317172	386369
B520	602	West	Cookstown - Stewartstown Tullywigan Road (South of roundabout)	To Cookstown	To Stewartstown	281313	376093
B545	641	West	Tempo - Maguiresbridge (at Drumderg)	To Tempo	To Maguiresbridge	234999	345085
C47	161	North	Tullygarley Road, Ballymena	To Galgorm Road	To Toome Road	309122	401708

Traffic and Travel Information 2020

Route	CP No	Divn.	Location	Channel 1	Channel 2	Easting	Northing
C368	504	East	Rathgael Road, Bangor	To Rathgael	To A2	348270	380052
C704	237	East	Cregagh Road, Belfast	To Belfast	From Belfast	335979	372317
C/UC	140	North	Ahoghill, Straid Road	To Ahoghill	To Randalstown	305792	401247
C/UC	141	West	Maghera Craigadick Road (U5053 near A6)	To Maghera	From Maghera	284772	399869
C/UC	142	North	Ballygalley Castle Hotel	To Ballygalley	To Cairncastle	337218	407733
C/UC	143	North	Broughshane, Caherty Road	To Broughshane	To Crebilly	315252	405662
C/UC	144	West	Draperstown, Bancran Road (near junction with B162)	To Draperstown	From Draperstown	275606	395360
C/UC	145	North	Ballygalley (at Old Mill)	To Larne	To Ballygalley	339287	405015
C/UC	146	West	Draperstown Mulhavoo Road (U5254 near junction with B41)	To Draperstown	To Moneyneany	278687	395567
C/UC	147	East	Pollindoo (North West of Carrickfergus)	To Carrick	From Carrick	339997	393524
C/UC	226	East	Governors Bridge, Belfast	To Saintfield Road	To Governors Bridge	333908	371628
C/UC	336	North	Garvagh, Mettican Road at No 82	To Garvagh	From Garvagh	283729	417809
C/UC	337	North	Ballycastle (between B15 and A2)	To B67	To B15	310189	440978
C/UC	338	North	Glenshane (off A6)	To Maghera	To Dungiven	272682	406657
C/UC	339	North	Ballymoney (B147 - B15)	To Kirkhills	From Kirkhills	298155	429464
C/UC	340	North	Gleanna Road (West of Cushendall)	To Cushendun	To Loughguile	309128	429256
C/UC	341	North	Girona Ave, Portrush	To Hopefield Ave	To Ballywillan	286049	439585
C/UC	357	North	Northland Road, Londonderry, at Fire Station	To City Centre	To Springtown	243251	417579
C/UC	369	East	Boucher Road, Belfast, near Balmoral Road	To Stockmans Lane	To Broadway	331441	371416
C/UC	399	North	Skeoge Link – Ballyamet Roundabout	To Foyle Bridge	To Buncrana Road	243507	421130
C/UC	429	South	Newtownhamilton (cemetery)	To Newtown-hamilton	From Newtown-hamilton	291974	327428
C/UC	430	South	Monroe Avenue, Lurgan	To A3	From A3	309348	357980

Traffic and Travel Information 2020

Route	CP No	Divn.	Location	Channel 1	Channel 2	Easting	Northing
C/UC	431	South	Granemore Road, East of Keady (off B31)	To Keady	From Keady	289960	335365
C/UC	433	South	Glassdrummond (off B3)	To Armagh	From Armagh	294162	339488
C/UC	533	South	Islandhill, Comber	To Car Park	To A21	348640	369108
C/UC	534	East	Springwell Road, Groomsport	To Groomsport	From Groomsport	354085	382477
C/UC	535	East	Front Road, Drumbo	To Drumbo	To Hillsborough Road	333280	363899
C/UC	635	West	Muckcross Road, Kesh near A35	To Kesh	From Kesh	217914	363980
C/UC	636	West	Tempo, Glen Road (North of Tempo off B80)	To Tempo	To Trillick	235651	348860
C/UC	637	West	Clady (U202 Tullmoan Road, South of Clady)	To Clady	From Clady	229874	393040
C/UC	638	West	West of Omagh, Tattysallagh Road (C665 B84 - A32)	To B84	From B84	234246	368418
C/UC	639	West	Castleberg, North West Drumquin (Meencargagh Road U133)	To Castleberg	To Drumquin	228720	378347
C/UC	640	West	Drumquin (Bradan Road C669 West of B84)	To Drumquin	To Pettigoe	231953	372834
C/UC	642	West	North West of Stewartstown (Annaghone Road, C619 off B160)	To Cookstown	To Stewartstown	284949	372099
M1	403	South	Lough Road (Junction 10) - Ballynacor (Junction 11)	To Lurgan	To Dungannon	304943	359724
M1	404	South	Stangmore (Junction 15) - Tamnamore (Junction 14)	To Dungannon	To Lurgan	284467	361524
M1	435	South	M1 Eastbound to M12 off - slip	One Way Traffic Flow	N/A	302352	358807
M1	445	South	Junction 9 to 10 near Knockadoney Bridge	To Belfast	To Portadown	311280	361742
M1	521	East	Sprucefield (Junction 7) - Moira (Junction 9)	To Lisburn	To Moira	322214	360664
M2	116	North	Lame Road (Junction 10) - Broughshane Road (Junction 11)	To Ballymoney	To Antrim	312432	403251
M12	406	South	M12 North of Carn	To Portadown	To M1	302394	357981
M12	436	South	M12 to M1 Westbound on - slip	One Way Traffic Flow	N/A	302598	358423

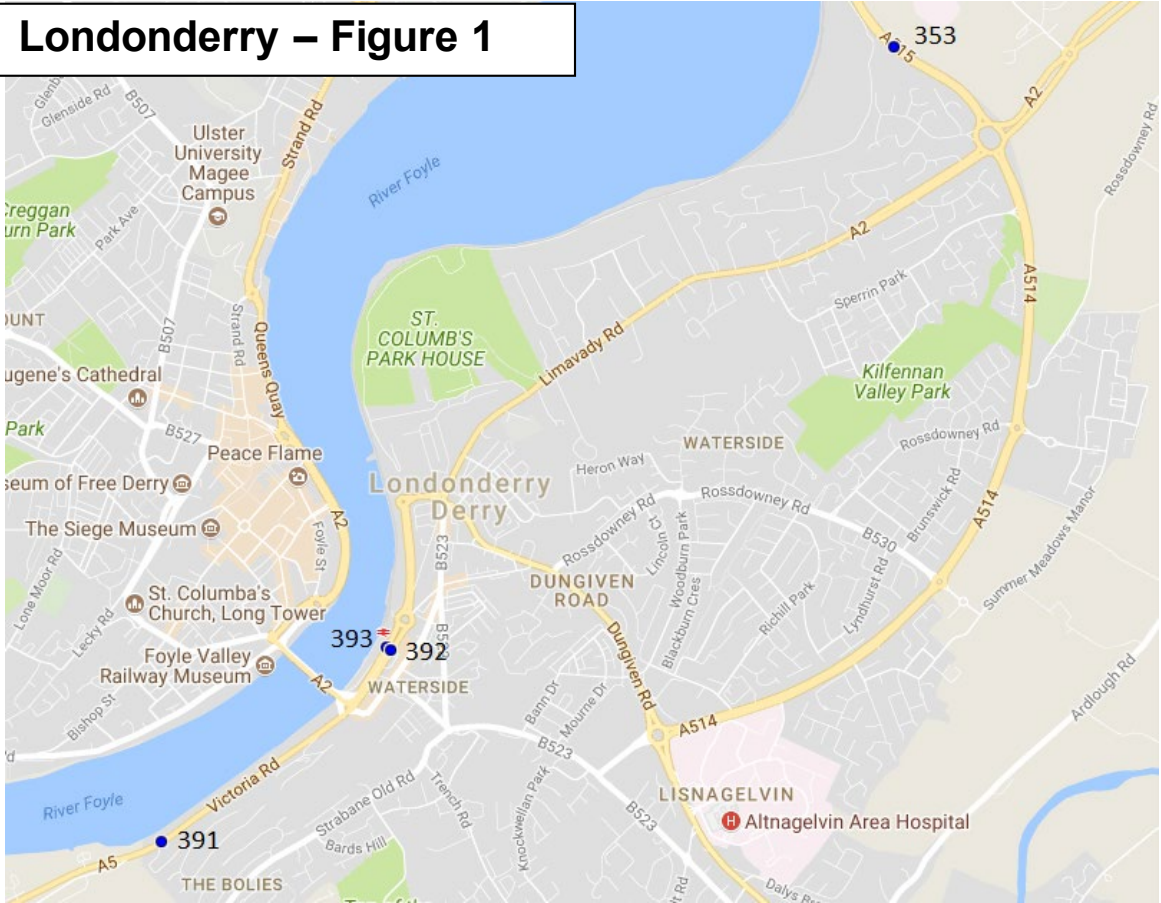
APPENDIX B

Location of Current Census Points

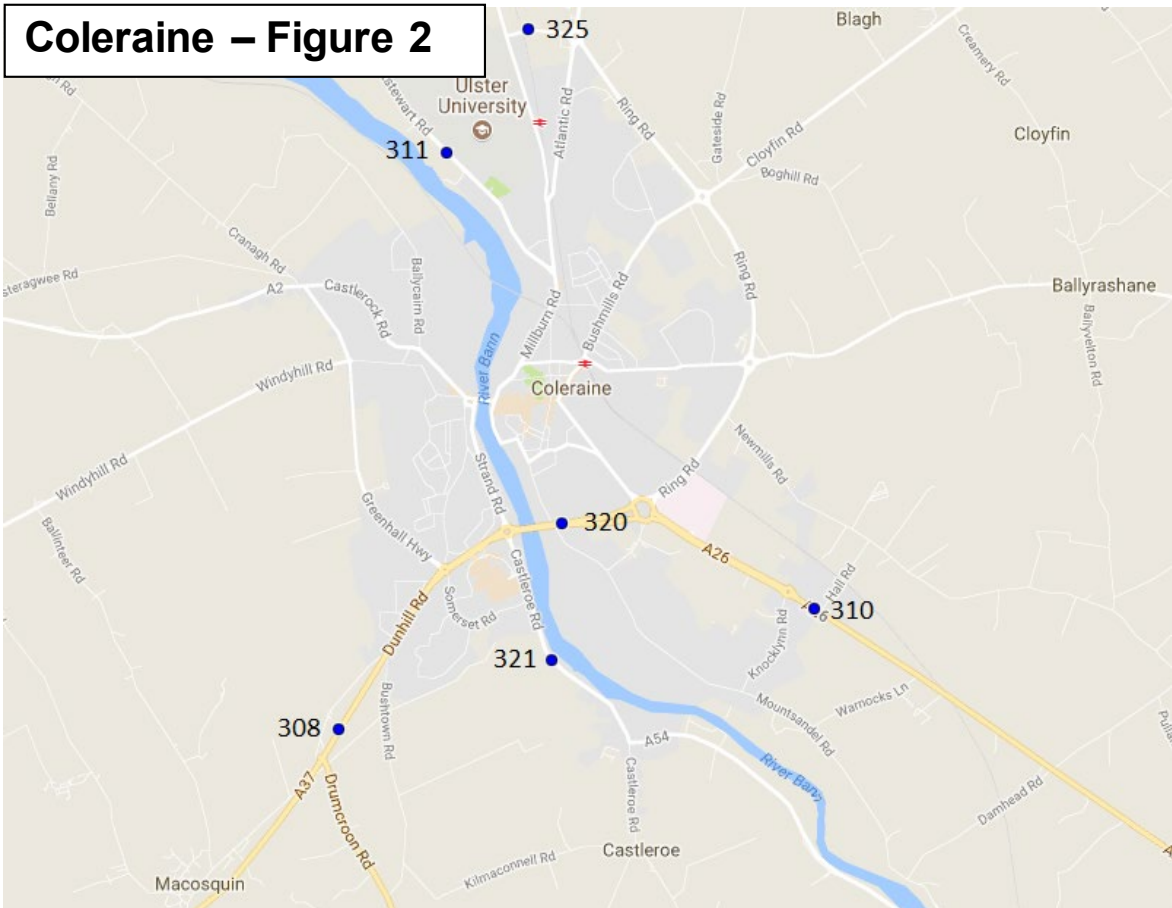
Appendix B Location of Current Census Points

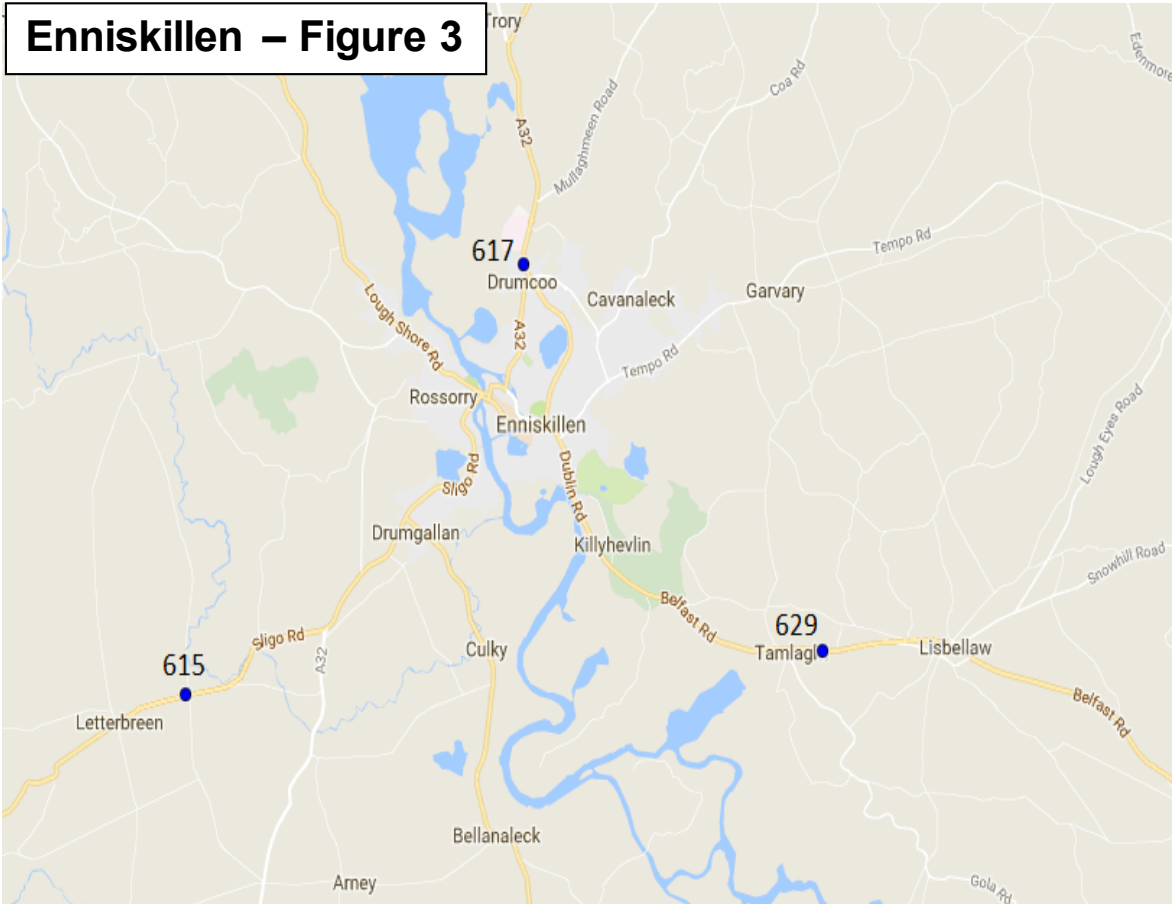
1. The maps contained in Appendix B show the locations of the Census Points from which the information in the report has been derived.
2. Figures 1 to 3 show Census Point locations in Londonderry, Coleraine and Enniskillen.
3. Figure 4 shows the location of Census Points and the 7-Day Annual Average Daily Flows throughout Northern Ireland.

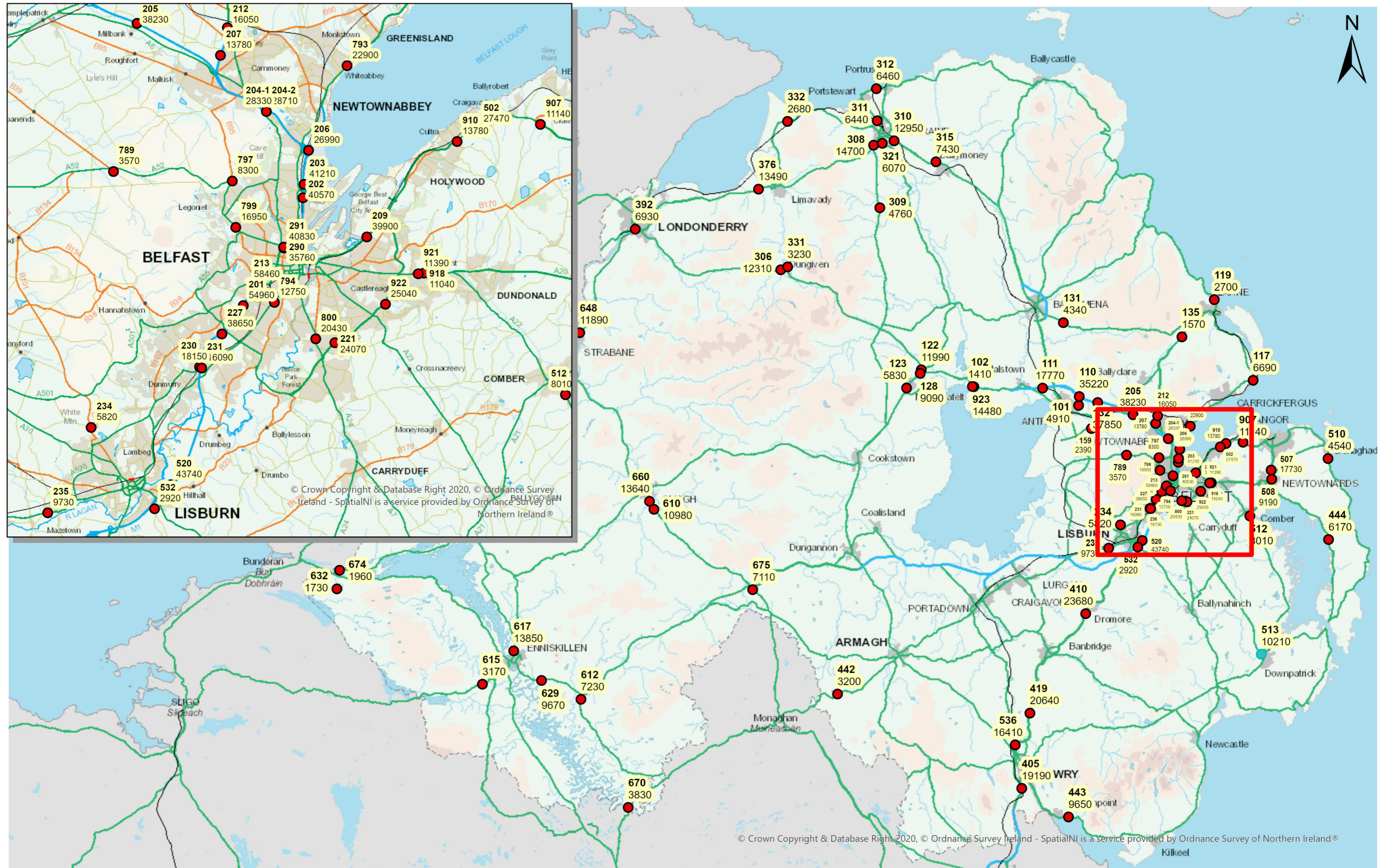
Londonderry – Figure 1



Coleraine – Figure 2







Supporting Information

DFI 2020 Traffic & Travel Information Report
 OSNI Basemap
 DFI Traffic Data 2020

Key	
101	- Site number in bold
4910	- 7-day AADT

Figure 4.
 DFI 2020 Traffic & Travel Information Report
 Location of census points & Annual
 Average daily traffic flows
 for NI

Ref No. : dfiTrafficTravelReport20



Except as otherwise permitted under Copyright, Designs and Patents Act 1988 (as amended), this publication may only be reproduced, stored or transmitted in any form or by any means, with the prior permission of Land & Property Services.
 © Crown Copyright and Database Right 2018

If you would like any further information or additional copies of this document, please contact:

Traffic Information and Control Centre
1b Airport Road
Belfast BT3 9DY

Telephone (028) 9025 4517
Fax (028) 9025 4555
E-mail address: Belfast.ticc@infrastructure-ni.gov.uk

If this document is not in a format that meets your needs, please contact Traffic Information and Control Centre as above to discuss your requirements.

RSP 21/001