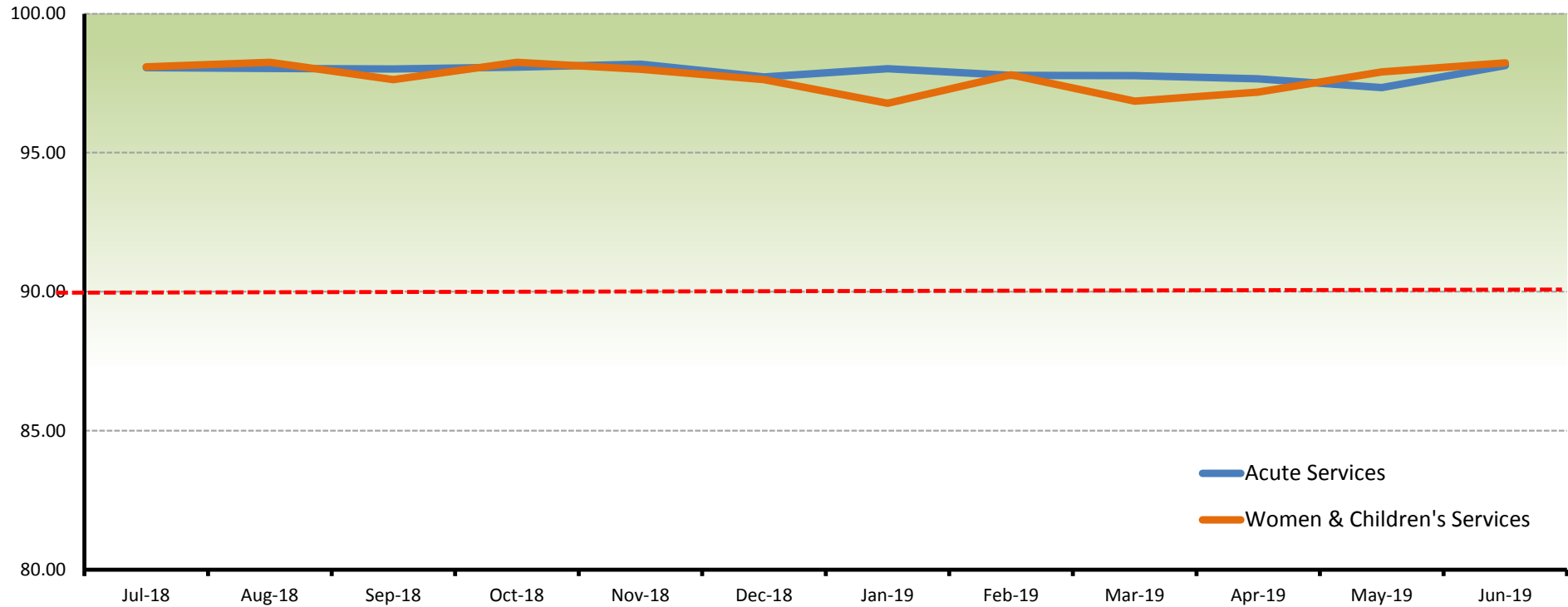


Trust Board Environmental Cleanliness Audit Report Overview

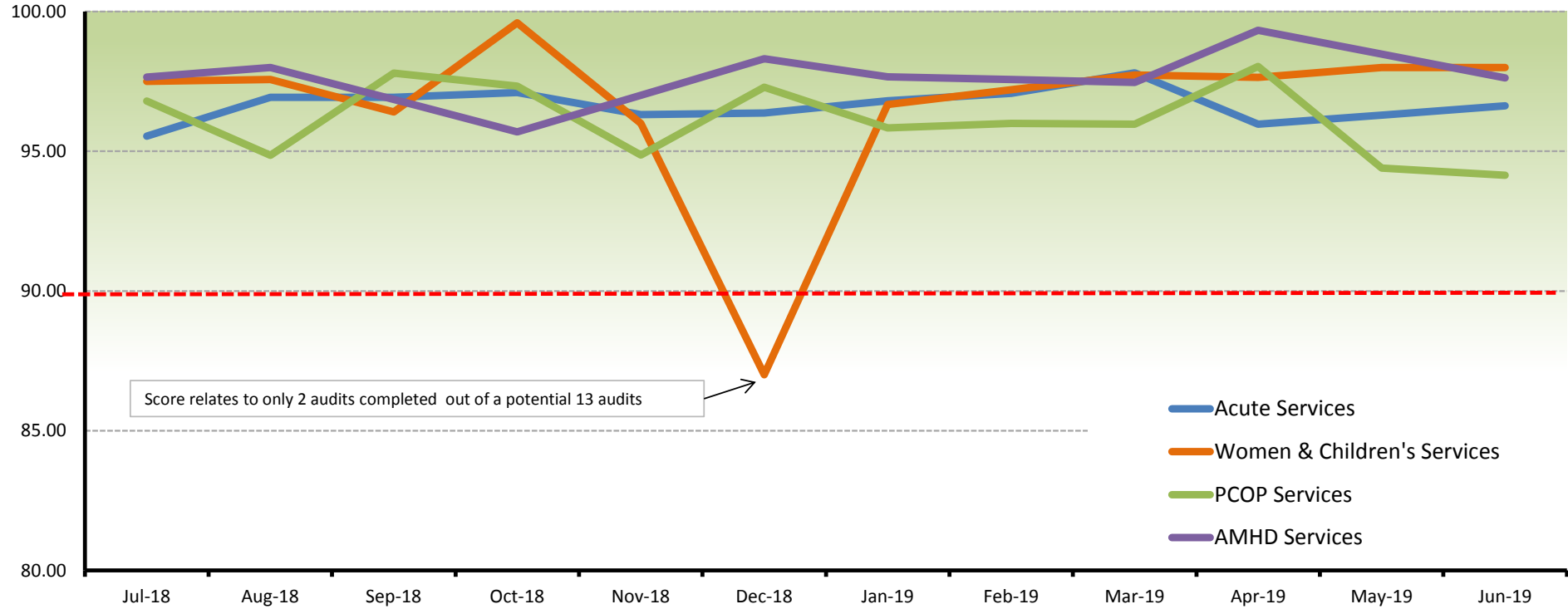
April - June 2019

Bi-Monthly:	
April	
Scores less than 75%:	None
Partial-compliant	ALT-Ward 50
1 out of 2 audits completed and reported:	
Overall Compliance:	99%
May:	
Scores less than 75%:	None
Overall Compliance:	100%
June:	
Scores less than 75%:	None
Overall Compliance:	100%
Quarterly:	
Scores less than 75%:	None
No audit completed/reported:	ALT-Ward 41 AMU SWAH-Children's Outpatients
End of the quarter compliance:	99%
6-Monthly:	
Scores less than 75%:	ALT-Haematology (P=74%) Lackaboy 2 (C=67%, P=56%)
3rd month of the 6-month compliance:	37%
Managerial:	
Scores less than 75%:	Lisnaskea Health Centre (P=66%) Strabane Health Centre (P=66%)
Compliance:	22%

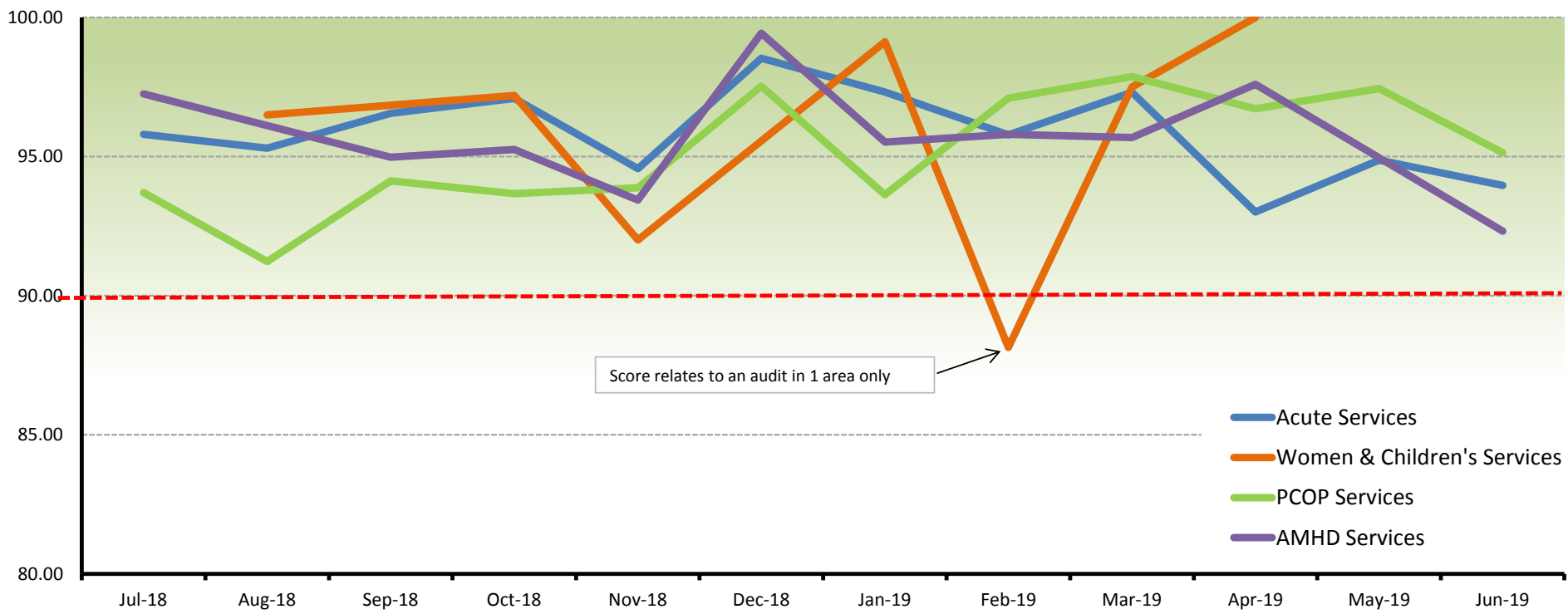
Directorates' Bi-Monthly Environmental Cleanliness Audits Average Scores



Directorates' Quarterly Environmental Cleanliness Audits Average Scores



Directorates' 6-Monthly Environmental Cleanliness Audits Average Scores



Managerial Environmental Cleanliness Audit Report

- 1 The Managerial Audit is an unannounced audit conducted by a team of Senior Staff with the objective of providing check and balance of self-assessed audits.
- 2 One (1) full audit per year per ward / department is required to be completed.
- 3 By the end of each quarter, each Division should have at least accomplished 25% compliance rating.
- 4 Action should be taken against results that have high discrepancy in scores between the managerial audit and ward audit.

Ward / Facility	Date of Managerial Audit	Composite Managerial Audit Scores to Date				Previous Ward Audit			
		Overall	C	P	E	Overall	C	P	E
Acute Services - Surgery									
1 ALT-DESU									
2 ALT-ICU									
3 ALT-HDU									
4 ALT-Theatre - 1									
5 ALT-Theatre - 2									
6 ALT-Theatre - 3									
7 ALT-Theatre - 4									
8 ALT-Theatre - 5									
9 ALT-Theatre - 6									
10 ALT-Theatre - 7									
11 ALT-Theatres - Recovery									
12 ALT-DCU - Theatre									
13 ALT-DCU - Eye Theatre									
14 ALT-Ward 31									
15 ALT-EPU									
16 ALT-Ward 2 TOU	May-19	87	92	85	84	97	97	94	100
17 ALT-Ward 32 ESU									
18 ALT-Ward 7	May-19	95	93	95	97	98	98	98	97
19 ALT-Head & Neck Ward	May-19	87	92	88	81	99	98	99	99
20 ALT-Elective Orthopaedics Unit									
21 ALT-Fracture Clinic									
22 ALT-Ophthalmology									
23 ALT-Outpatients									
24 ALT-Pre-Op Assessment	May-19	95	91	95	100	95	91	95	100
25 OHPCC-Main Theatres /Anaesthetic Rooms									
26 OHPCC-DPU Stage 2 Recovery									
27 OHPCC-Outpatients	May-19	89	84	89	94	90	83	98	98

Ward / Facility	Date of Managerial Audit	Composite Managerial Audit Scores to Date				Previous Ward Audit			
		Overall	C	P	E	Overall	C	P	E
28 OHPCC-Pain Clinic									
29 OHPCC-Pre-Op Assessment									
30 SWAH-Critical Care									
31 SWAH-DPU Ward									
32 SWAH-Ward 8	Apr-19	92	93	89	94	94	90	96	94
33 SWAH-Ward 9									
34 SWAH-Main Theatres	May-19	86	91	76	90	96	93	97	98
35 SWAH-Outpatients	May-19	93	91	97	90	92	87	93	95
36 SWAH-Pre-Op Assessment	May-19	93	91	97	90	97	94	97	100
37 Roe Valley-Outpatients									
38 Urology Specialist Nurses Clinic									
Number of Audits This Month		0							
Compliance Rating Todate		24%							
Acute Services - Emergency									
1 ALT-A&E									
2 ALT-Ward 41 AMU									
3 ALT-Anderson's House									
4 ALT-Cardiac Investigations									
5 ALT-Cath Lab									
6 ALT-Cath Lab 2									
7 ALT-CCU									
8 ALT-ACU									
9 ALT-Ward 24 previously Ward 1	Apr-19	91	83	90	99	97	91	100	100
10 ALT-Renal Unit									
11 ALT-Ward 22 previously Ward 20									
12 ALT-Ward 9 Rheumatology Infusion Unit									
13 ALT-Ward 21 Respiratory Nurse Specialists									
14 ALT-Ward 26 previously Ward 3									
15 ALT-Ward 44	Jun-19	93	90	96	93	98	96	100	96
16 SWAH-Accident & Emergency	Apr-19	88	90	87	86	91	91	86	96
17 SWAH-Cardiac Unit									
18 SWAH-Ward 1 MSAU									
19 SWAH-Ward 2	May-19	91	90	92	91	96	97	95	95
20 SWAH-Ward 3	Jun-19	84	80	84	88	98	97	99	98
21 SWAH-Cardiac Investigations	Apr-19	90	90	93	87	92	87	95	93
22 OHPCC-Cardiac Assessment Unit									
23 OHPCC-Cardiac Investigations									
24 OHPCC-Renal Unit	May-19	95	93	95	98	98	95	99	100
25 OHPCC-Urgent Care Centre									

Ward / Facility	Date of Managerial Audit	Composite Managerial Audit Scores to Date				Previous Ward Audit			
		Overall	C	P	E	Overall	C	P	E
Number of Audits This Month		2							
Compliance Rating Todate		28%							
Acute Services - Diagnostics & Clinical Support									
1 ALT-Biochemistry									
2 ALT-Breast Screening Unit	Apr-19	94	95	97	91	98	96	97	100
3 ALT-Cancer Centre Radiology									
4 ALT-Cancer OPD									
5 ALT-Endoscopy									
6 ALT-Laboratory									
7 ALT-Medical Imaging									
8 ALT-Body Store									
9 ALT-Sperrin Suite									
10 ALT-Ward 50									
11 Roe Valley-Xray Dept									
12 SWAH-Laboratory									
13 SWAH-Medical Imaging									
14 SWAH-Body Store	Jun-19	83	83	80	88	100	96	100	100
15 SWAH-DPU Endoscopy									
16 OHPCC-Endoscopy									
17 OHPCC-Outreach Chemotherapy									
18 OHPCC-Medical Imaging	Apr-19	97	96	98	98	99	99	99	100
Number of Audits This Month		1							
Compliance Rating Todate		17%							
Acute Services - Pharmacy									
1 ALT-Pharmacy	Jun-19	91	89	89	96	98	100	99	97
2 OHPCC-Pharmacy	Jun-19	94	99	89	93	100	99	100	100
3 SWAH-Pharmacy									
Number of Audits This Month		2							
Compliance Rating Todate		67%							
Women & Children's Services - Health Care									
1 ALT-Ward 48 Labour									
2 ALT-Ward 47 Midwifery Led									
3 ALT-Ward 45 Ante-natal									
4 ALT-Ward 46 Post-natal									
5 ALT-Ward 43 Gynaecology									
6 OHPCC-Womens & Family Health									
7 SWAH-Delivery Suite									
8 SWAH-Women's Health Centre									

Ward / Facility	Date of Managerial Audit	Composite Managerial Audit Scores to Date				Previous Ward Audit			
		Overall	C	P	E	Overall	C	P	E
9 ALT-Ward 49 NNICU									
10 ALT-Ward 6 Paediatrics									
11 ALT-Butterfly Lodge									
12 ALT-Ward 16									
13 OHPCC-Childrens Centre									
14 SWAH-Neonatal Unit									
15 SWAH-Childrens Ambulatory Care	Jun-19	92	88	96	91				
16 SWAH-Childrens Ward									
17 SWAH-Childrens Outpatients									
18 ALT-GUM Clinic									
19 SWAH-Milk Bank									
Number of Audits This Month				1					
Compliance Rating Todate				5%					
Women & Children's Services - Physical Disability									
1 ALT-Spruce House									
2 Glen Oaks previously FDRC									
3 Drumcoo Day Centre, Eniskillen									
Number of Audits This Month				0					
Compliance Rating Todate				0%					
PCOP Services - Primary & Community Care									
1 Carrickmore Health Centre									
2 Castlederg Health Centre									
3 Claudy Health Centre									
4 Claudy Health Centre Treatment Room									
5 Dungiven Health Centre									
6 Dungiven Health Centre Treatment Room									
7 Erne Health Centre Treatment Room									
8 Great James St Health Centre									
9 Great James St Health Centre Treatment Room									
10 Irvinestown Health Centre									
11 Irvinestown Health Centre Treatment Room									
12 Irvinestown Podiatry									
13 Limavady Health Centre									
14 Lisnaskea Dental									
15 Lisnaskea Health Centre	Jun-19	75	80	66	80				
16 Lisnaskea Health Centre Treatment Room	Jun-19	88	84	94	85	94	94	98	90
17 Lisnaskea Podiatry	Jun-19	92	86	91	100				
18 Omagh HC Treatment Room									
19 Rapid Response Derry									

Ward / Facility	Date of Managerial Audit	Composite Managerial Audit Scores to Date				Previous Ward Audit			
		Overall	C	P	E	Overall	C	P	E
20 Rapid Response Fermanagh									
21 Rapid Response Omagh									
22 Rathmore Belleek Health Centre									
23 Rathmore Belleek Health Centre Treatment Room									
24 Shantallow Health Centre									
25 Strabane Health Centre	May-19	81	91	66	87				
26 Strabane Health Centre Treatment Room	May-19	90	93	92	85	95	94	100	92
27 Waterside Health Centre	Jun-19	87	86	81	94				
28 Waterside Health Centre Treatment Room	Jun-19	92	90	92	93	99	100	97	99
Number of Audits This Month		5							
Compliance Rating Todate		25%							
PCOP Services - Secondary Care									
1 ALT-Ward 40									
2 ALT-Ward 42									
3 SWAH - Ambulatory Day Care									
4 SWAH - Ward 5									
5 SWAH - Ward 6									
6 SWAH - Ward 7	Jun-19	88	87	87	91	94	87	99	96
7 OHPCC-Rehab Ward									
8 OHPCC-Ward 5 Palliative									
9 Waterside-Ward 3	Jun-19	89	84	92	90	98	96	100	98
10 Waterside-Ward 4	Jun-19	92	89	91	97	98	98	100	96
11 Waterside Hospital Main Areas									
12 PCOPS-OPALS South Wing Clinics	Apr-19	91	91	81	100	93	85	97	98
Number of Audits This Month		3							
Compliance Rating Todate		33%							
PCOP Services - Mental Health									
1 T&F-Ash Villa									
2 T&F-Oak A&B									
3 Waterside-Ward 1	Jun-19	97	97	96	98	98	96	100	99
4 Waterside-Ward 2	Jun-19	97	96	95	99	98	97	100	96
Number of Audits This Month		2							
Compliance Rating Todate		50%							
PCOP Services - HSDU									
1 ALT-HSDU	Jun-19	96	94	97	99	97	95	99	98
2 OHPCC-HSDU									
Number of Audits This Month		1							
Compliance Rating Todate		50%							

Ward / Facility	Date of Managerial Audit	Composite Managerial Audit Scores to Date				Previous Ward Audit			
		Overall	C	P	E	Overall	C	P	E
PCOP Services - Care & Accommodation									
1 Beragh Day Centre									
2 Creggan Day Centre									
3 Dromore Day Centre									
4 Drumhaw Day Centre									
5 Foyleville Day Centre									
6 Gortin Day Centre									
7 Gortmore Day Centre									
8 Greenfield Residential Home									
9 Newtownstewart Day Centre									
10 Rectory Field Residential Home									
11 Seymour Gardens Residential Home									
12 Strabane Day Centre									
13 Tempo Road Day Centre									
14 Thackery Day Centre									
15 Thackery Place Residential Home									
16 William Street Residential Home									
Number of Audits This Month		0							
Compliance Rating Todate		0%							
PCOP Services - AHP									
1 ALT-AHP Centre Adults									
2 ALT-Orthoptic Room									
3 ALT-Podiatry									
4 Bridgeview House Child Development Centre									
5 OHPCC-Adult's AHP									
6 OHPCC-Children's AHP									
7 OHPCC-Orthoptic									
8 OHPCC-Podiatry									
9 RV-Physiotherapy									
10 SWAH-Adult's AHP									
11 SWAH-Children's AHP									
12 SWAH-Orthoptics									
13 SWAH-Podiatry									
14 Woodview Assessment Clinic									
Number of Audits This Month		0							
Compliance Rating Todate		0%							
Adult Mental Health & Disability Services - Mental Health									
1 Acute Day Care, Gransha									
2 Alcohol & Drugs (ATU), Omagh									

Ward / Facility	Date of Managerial Audit	Composite Managerial Audit Scores to Date				Previous Ward Audit			
		Overall	C	P	E	Overall	C	P	E
3 Alcohol & Drugs, Woodlea House									
4 Arden Centre, Limavady									
5 Carrick, Grangewood									
6 Cityside Recovery team, Slievemore House									
7 CMHT Key Woker Accommodation, SWAH									
8 Evis, Grangewood									
9 Hillside Day Centre, Strabane									
10 Limavady Recovery Team									
11 Lisnamallard Industries, Omagh									
12 Melrose Day Centre									
13 Omagh Recovery and Primary Care Teams									
14 Primary Care Liaison, Oldbridge House									
15 Psychological Therapies, Oldbridge House									
16 Strabane Recovery Team									
17 T&F-Elm Ward									
18 T&F-Erne House									
19 T&F-Forensic Service									
20 T&F-Lime Ward									
21 T&F-Psychiatric Intensive Care									
22 T&F-Rowan Villa									
23 Waterside Recovery Team									
Number of Audits This Month		0							
Compliance Rating Todate		0%							
Adult Mental Health & Disability Services - Learning Disability									
1 Beltany Respite Facility									
2 Benbradagh ATC									
3 Berryburn Centre, Lakeview Hospital									
4 Cottage Adult Respite									
5 Creamery Residential Facility									
6 Evergreen Centre									
7 Glenside ATC									
8 Lackaboy 2									
9 Lakeview Support Area									
10 Lakeview-Brook Treatment Room									
11 Lisnaskea									
12 Mantlin Residential Facility									
13 Maybrook ATC									
14 Omagh Centre									
15 Ralphs Close									

Ward / Facility	Date of Managerial Audit	Composite Managerial Audit Scores to Date				Previous Ward Audit			
		Overall	C	P	E	Overall	C	P	E
16 Strule Lodge									
Number of Audits This Month		0							
Compliance Rating Todate		0%							
TOTAL NUMBER OF AUDITS THIS MONTH		15							
OVERALL COMPLIANCE RATING		22%							