

Factsheet for Northern Ireland Coronavirus (COVID-19)



Responding to COVID-19 in our care homes



Protecting people who live in our care homes and those who care for them is of immense importance to the Health and Social Care Board.

In the first of a new blog series, the Board's Director of Social Care and Children, Marie Roulston, explains the work undertaken to further prevent the spread of COVID-19 in care homes.

To find out more, including a link to the current surge plan, visit: bit.ly/2yK6OgJ

Take our survey and tell us what you think

We hope you find the HSC Factsheet a useful source of health and social care COVID-19 related information.

To help us provide the information that's important to you at this time we'd love you to take our short survey. There's also a chance for you to subscribe to our online Health and Social Care Board ezine.

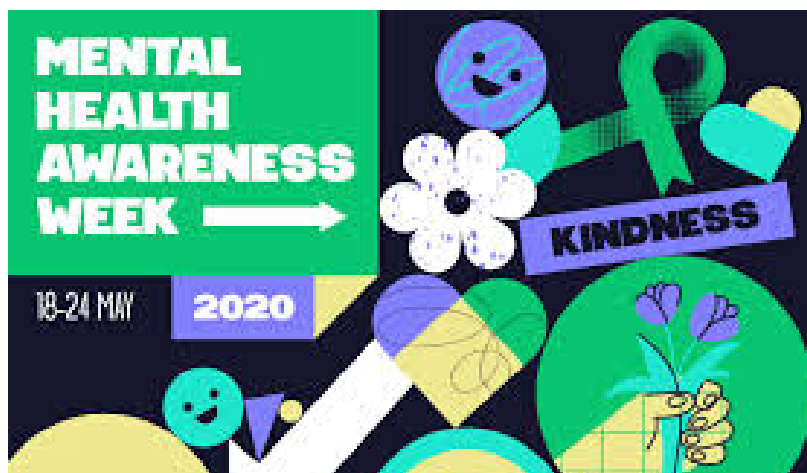
Complete the survey by **Monday 15 June** at: bit.ly/2ZVhAM2

Stay at home - Wash your hands - Keep your distance

Mental Health Awareness Week

During Mental Health Awareness Week, which ran from 18-24 May, a range of health professionals stressed the importance of looking after your mental health and emotional wellbeing, particularly during these difficult and challenging times.

A number of COVID-19 Mental health and emotional wellbeing resources are available at www.mindingyourhead.info



Watch our videos for advice and support at bit.ly/3dafA6t

Your dental questions answered



Dental practices have been particularly impacted by the COVID-19 pandemic.

To help explain the changes to your practice, some of your most frequently asked questions about dentists and their work are answered by some of the clinical leads of the Urgent Dental Care Clinics.

Find out more at: bit.ly/2XH0q24

Get early advice for cancer signs, urge GPs

Cancer professionals and GPs are urging people to be aware of the general signs and symptoms of cancer and to contact their GP, without delay, if they are experiencing these.

This follows a significant drop, of up to 70%, in the number of red flag referrals since the start of the pandemic. More at: <https://bit.ly/3deG8n3>

Public urged to sign up for new study

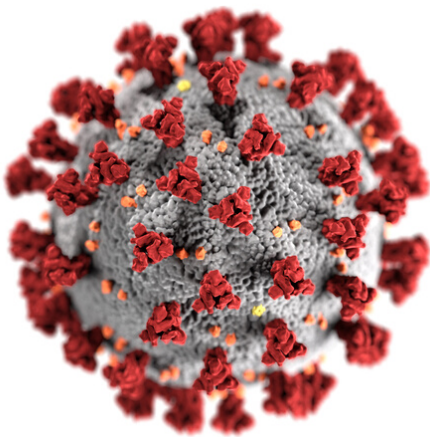
The public are urged to sign up to a new study which will help identify who is most at risk of contracting COVID-19.

The COVIDENCE-UK study, led by Queen Mary University of London, aims to recruit at least 12,000 people, aged 16 or over, from across the UK.

More at: bit.ly/3erredp



Helping us understand impact of pandemic



A series of blogs have been developed by the Public Health Agency to help raise an understanding around the management, impact and epidemiology of the COVID-19 pandemic in Northern Ireland.

They also feature articles and advice on looking after your physical and mental health in this difficult time. More at: bit.ly/2zuBlj6

Support available for drug misuse

The dangers associated with the misuse of illicit and prescription drugs, particularly during lockdown, have been highlighted.

A range of drug support services are still operating in your local area.

Details and more information can be found at bit.ly/2XBJ3jg



Innovative drug to be made available in NI



An anti-viral drug will be available for the treatment of COVID-19, the Health Minister has announced.

Remdesivir is an innovative drug that is currently undergoing clinical trials around the world, including the UK. International studies show the drug can shorten recovery time from COVID-19 by about four days. More at: bit.ly/2M4kp5k

New statistical report

A new report examining key trends and characteristics of COVID-19 has been produced by the Public Health Agency to help build a longer-term understanding of the virus and its impact.

More at: bit.ly/3gryVSO

How to protect your skin

HSC staff have been advised on how to protect their skin from the damage which can be caused by wearing a respirator mask.

Staff are encouraged to contact their local tissue viability nurse if problems occur.

More at: bit.ly/3erD5s7

Carers' Advice

Advice for informal carers and young carers will be updated regularly with input from Health and Social Care, the voluntary sector and carers.

More: bit.ly/36Gx48m

For more advice and information

- [Download previous HSC Factsheets](#)
- [For the latest figures on COVID-19 see Department of Health dashboard](#)
- www.publichealth.hscni.net/news/covid-19-coronavirus
- www.nidirect.gov.uk/coronavirus
- www.hscboard.hscni.net/coronavirus
- www.gov.uk/coronavirus