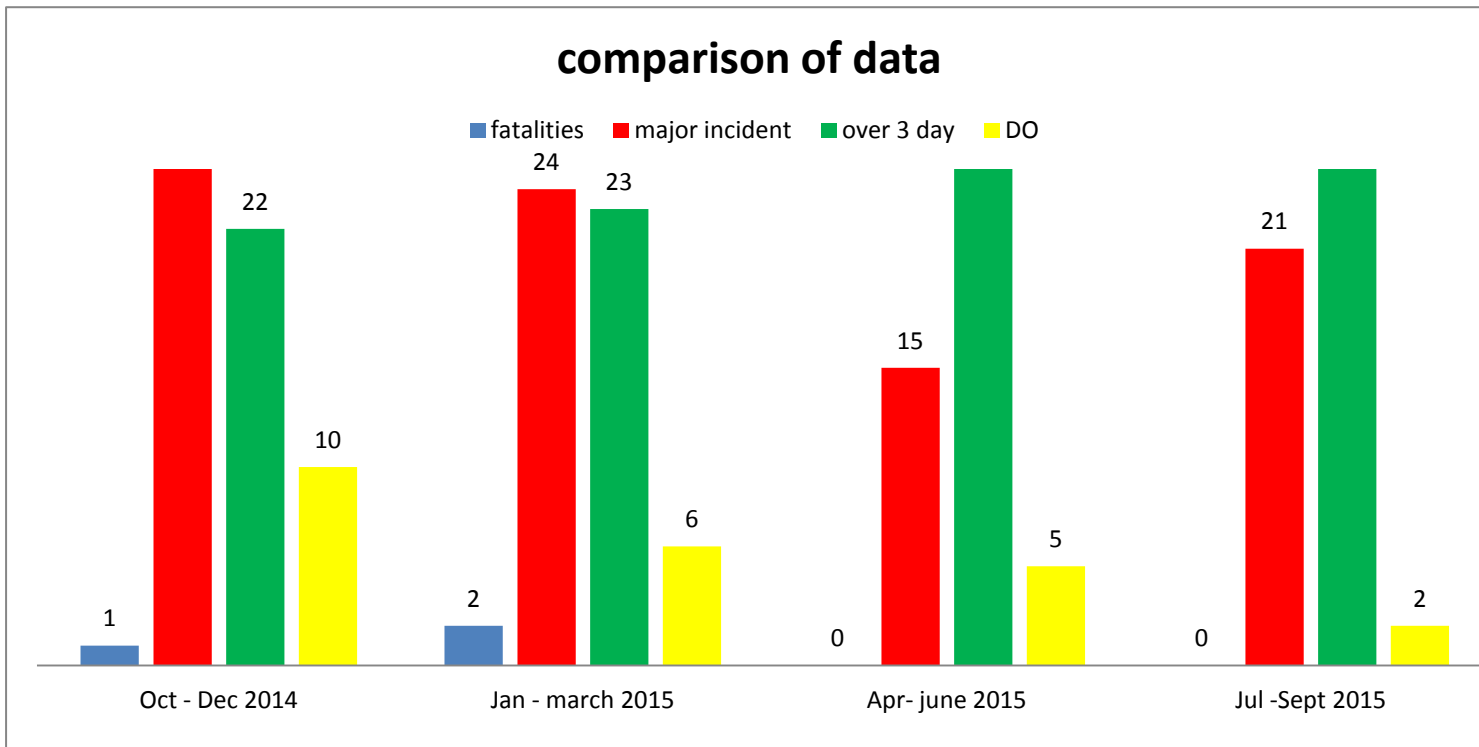


HSENI CONSTRUCTION GROUP STATISTICS

01 July 2015 – 30 September 2015

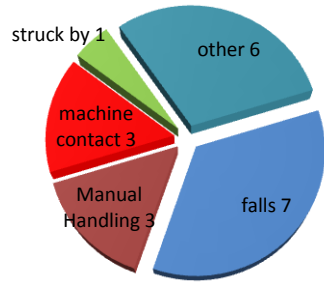
	fatalities		Major injuries (MI)	MI on private site	MI on public site		Over 3 day	3 day on private site	3 day on public site		Dangerous occurrence
Total numbers	0		21				31				2
Comparison private/public				19	2			21	10		

TABLE 1: numbers of reported incidents (including major injuries by type)

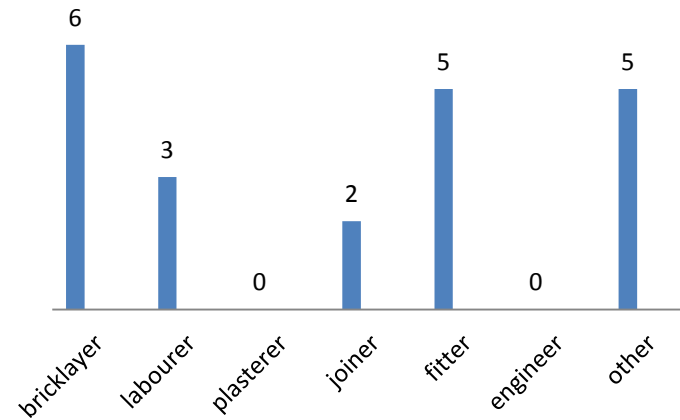


major injuries by cause

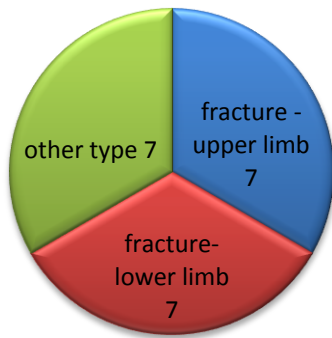
falls machine contact struck by other



major injury by trade

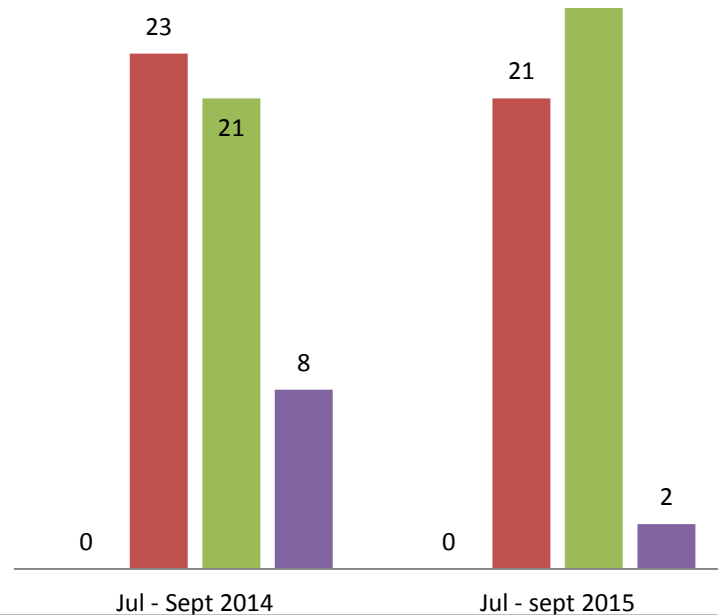


major injury by injury type



comparison of data for the same quarter 2014 & 2015

fatalities major incident over 3 day DO



Date	Major	Fatals	Over 3 day	Public	Private	Injury (type)	Occupation	Comments
04/07/2015	Machinery contact				Y	Fracture - wrist	Operator	grab hand bucket trapped operators hand
07/07/2015	Manual Handling				Y	amputation - finger	Plant Driver	finger trapped when lifting man hole cover
30/07/2015	Metal Contact				Y	Eye injury	Builder	piece of nail lodged in IPs eye
08/08/2015	Machinery contact				Y	Fracture - Upper limb	Labourer	Ips coat caught on generator injuring arm
11/08/2015	Slip				Y	Fracture - foot	Bricklayer	Jumped from scaffolding and went through window
20/08/2015	Trip				Y	Fracture - foot	Fitter	Tripped when coming of stepladders
20/08/2015	Slip				Y	Fracture-Foot	Fitter	Went over on ankle
21/08/2015	Struck				Y	Amputation- finger	Construction	Blocks fell on hand and crushed fingers
01/09/2015	Fall				Y	Fracture - foot	Labourer	Fall - over 2ms
03/09/2015	Fall				Y	Fracture- wrist	Construction	Fall- under 2ms
04/09/2015	Struck			Y		Fracture-back	Fitter	Struck by post
07/09/2015	trapped				Y	Fracture - ankle	Joiner	Panel fell on IP trapping his ankle
07/09/2015	Fall				Y	Superficial injuries	Bricklayer	Fell from scaffolding over 2ms
07/09/2015	Fall				Y	Strain back	Bricklayer	Fall over 2ms
08/09/2015	Manual Handling				Y	Amputation -toe	Labourer	lifting slat which slipped fell on foot
10/09/2015	Fall				Y	Fracture -head	Bricklayer	Fell under 2ms
16/09/2015	Fall				y	Fracture-back	Joiner	Fell under 2ms
17/09/2015	Manual Handling			Y		Fracture - ankle	Fitter	Moving plasterboard which fell on IP leg
17/09/2015	Fall				Y	Fracture - trunk	Bricklayer	Fall over 2ms
17/09/2015	Trip				Y	Fracture-hand	Fitter	Tripped on plastic covering
23/09/2015	Machinery contact				Y	Superficial injuries	Operator	Operating machinery when piece of metal come off hitting
01/07/2015			Manual Handling		Y	Strain-back	Construction	Jarred back when stepping down from lorry

02/07/2015			Struck by	Y		Laceration -Upper limb	Operative	Section of grip fell on IP
07/07/2015			Machinery contact	Y		Contusion - Lower limb	Fireman	contact with digger vehicle bucket
09/07/2015			Manual Handling	Y		Sprain - ankle	Construction	twisted ankle
14/07/2015			Manual Handling		Y	Laceration - fingers	Joiner	handling pane of glass which slipped
20/07/2015			Manual Handling		Y	Strain -lower limb	Electrician	Twisted back when stepping on to concrete
28/07/2015			Trip	Y		Fracture - Wrist	Labourer	Fell over when laying kerbs
28/07/2015			Trip		Y	Strain - upper limb	Fitter	Lost balance and tripped
29/07/2015			Trip	Y		Strain - Ankle	Engineer	misjudged flooring - went over on ankle
29/07/2015			Machinery contact		Y	Laceration - hand	Builder	Using hand saw which slipped
30/07/2015			Slip		Y	Superficial - wrist	Operative	Slipped when waking through site
30/07/2015			Fall		Y	Laceration - lower limb	Painter	Fall over 2ms
30/07/2015			Trip		Y	Strain - Lower limb	Construction	Tripped ground level twisted knee and ankle
31/07/2015			Cuts	Y		Laceration - fingers	Labourer	Using Stanley knife cut fingers
01/08/2015			Trip		Y	Strain - ankle	Other	lost balance and fell
04/08/2015			Collapse		Y	Concussion	Labourer	Dumper overturned when IP inside
05/08/2015			Manual Handling		Y	Strain - Back	Construction	Twisted back when lifting crow bar
10/08/2015			Manual Handling		Y	Fracture - finger	Construction	Slab bounced caught IP finger
11/08/2015			Manual Handling		Y	Strain - Wrist	Joiner	twisted wrist when lifting door
18/08/2015			Manual Handling		Y	Strain -back	Construction	Hurt back when lifting blocks
19/08/2015			Struck by		Y	Superficial injuries-foot	Construction	slab fell from roof on to IP foot
20/08/2015			Trip	Y		Strain - Lower limb	Construction	lost balance twisted knee
20/08/2015			Manual Handling		Y	Strain -Back	Labourer	Hurt back while pulling cables
21/08/2015			Struck by	Y		Superficial -face	Construction	struck by drill he was using
27/08/2015			Manual Handling	Y		Strain -back	Construction	Hurt back when trying to unwedge core bit from concrete
31/08/2015			Fall		Y	Strain -hand	Plumber	Fell under 2ms
01/09/2015			Trip	Y		Strain -Multiple	Construction	tripped over step when carrying dishes
02/09/2015			Fall		Y	Multiple injuries	Construction	Fall under 2ms
02/09/2015			Struck by		Y	Superficial-lower limb	Construction	Dumping contents from mortar tub which slipped on to IP
09/09/2015			Struck by		Y	Superficial -Lower limb	Plant Driver	Compressed RDF came loose and hit IP