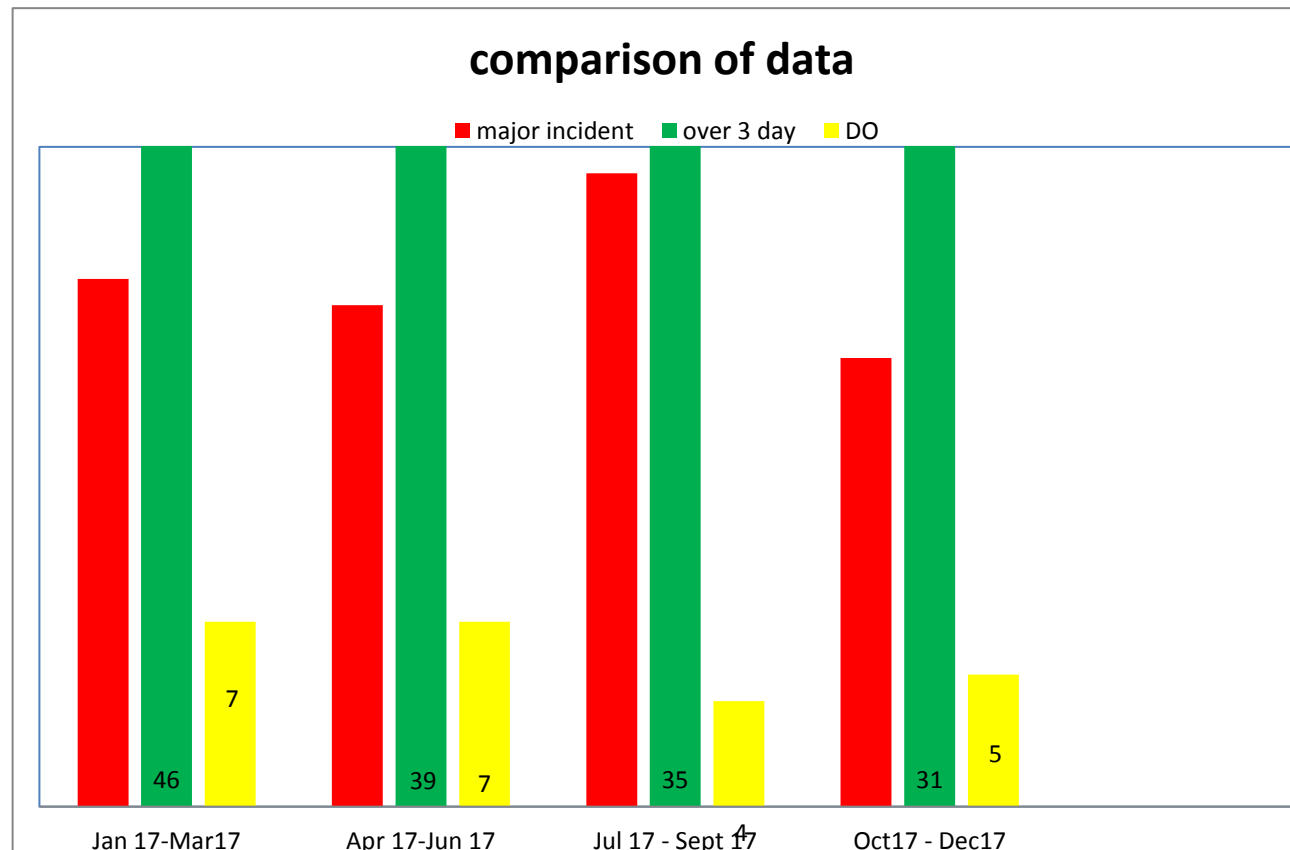


HSENI CONSTRUCTION GROUP STATISTICS

01 OCT 2017 – 31 DEC 2017

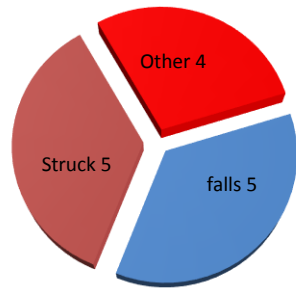
	fatalities	Major injuries (MI)	MI on private site	MI on public site	Over 3 day	3 day on private site	3 day on public site	Dangerous occurrence
Total numbers		17			31			5
Comparison private/public			12	6		25	6	

TABLE 1: numbers of reported incidents (including major injuries by type)

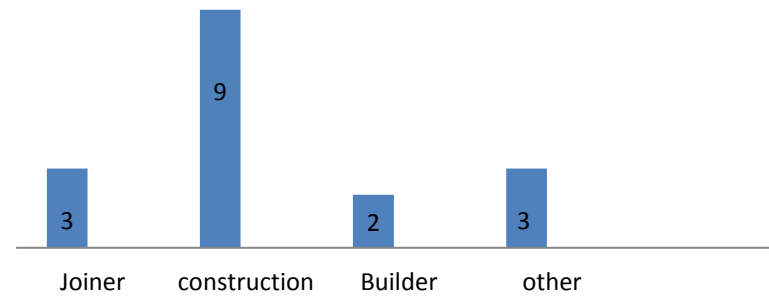


major injuries by cause

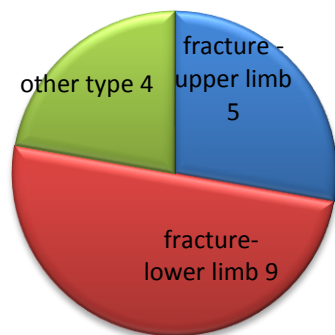
■ falls ■ Other



major injury by trade

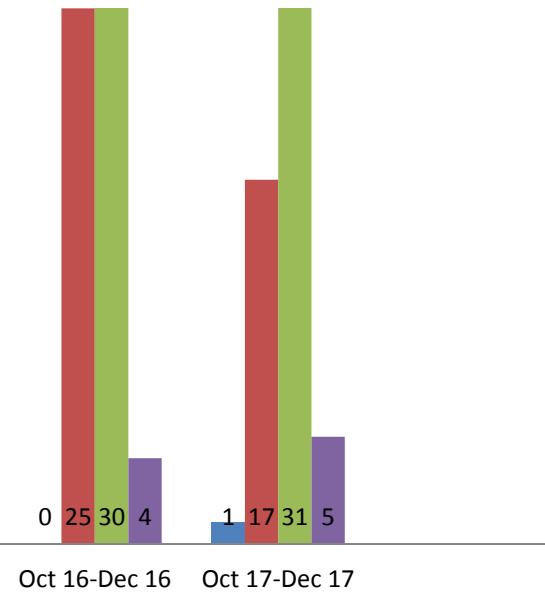


major injury by injury type



comparison of data for the same quarter 2016 & 2017

■ fatalities ■ major incident ■ over 3 day ■ DO



Date	Major	Fatals	Over 3 day	Public	Private	Injury (type)	Occupation	Comments
09/10/2017	Struck by			Y		Fracture (foot)	Construction	Struck by crowbar when removing fence
12/10/2017	Fall				Y	Fracture (back)	Driver	Fall (over 2ms) Fell from ladder
26/10/2017	Machinery Contact				Y	Amputation (hand)	Joiner	Using spindle moulder, hand slipped contacting machine head
03/11/2017	Slip/Trip				Y	Fracture (upper limb)	Construction	Slipped on loose materials
06/11/2017	Struck by				Y	Loss of sight	Joiner	Hit on eye by nail from nail gun
09/11/2017	Fall				Y	Fracture (ankle)	Construction	Fall (over 2ms) Fell through suspended floor
12/11/2017	Machinery Contact				Y	Amputation (lower limb)	Bricklayer	Site traffic tipped onto leg
14/11/2017	Struck by				Y	Fracture (lower limb)	Construction	Struck by excavator bucket
16/11/2017	Contact				Y	Fracture (foot)	Electrician	Got shock from loose wire and jumped from ladder
28/11/2017	Fall			Y		Fracture (back)	Construction	Fall (over 2ms) Fell through scaffold board
29/11/2017	Slip/Trip			Y		Dislocation (lower limb)	Joiner	Slipped on algae on flat roof
08/12/2017	Fall				Y	Fracture (foot)	Construction	Fall (over 2ms) Fell from ladder
08/12/2017	Slip/Trip				Y	Fracture (ankle)	Other	Slipped while walking around lorry
11/12/2017	Struck by			Y		Fracture (lower limb)	Construction	Struck by lump of concrete/clay
18/12/2017	Fall				Y	Dislocation (upper limb)	Construction	Fall (under 2ms) Fell through planks
18/12/2017	Struck by			Y		Fracture (upper limb)	Bricklayer	Struck by mortar bucket
21/12/2017	Not known			Y		Fracture (lower limb)	Construction	Leg gave way while IP standing
	17	1		6	12			
06/10/2017			Fall		Y	Laceration (head)	Joiner	Fall (over 2ms) Fell from ladder
09/10/2017			Struck by		Y	Upper limb injury	Construction	Struck by aluminium beam
10/10/2017			Machinery Contact	Y		Fracture (finger)	Construction	IP finger trapped while using drill
11/10/2017			Manual Handling		Y	fracture (finger)	Construction	Injured thumb when carrying load

16/10/2017			Slip/trip		Y	Fracture (finger)	Fitter	Slipped on stairs
18/10/2017			Fall		Y	Hand injury	Construction	Fall (over 2ms) Fell from ladder
20/10/2017			Manual Handling	Y		Back Strain	Construction	Hurt back while lifting
20/10/2017			Manual Handling		Y	Laceration (upper limb)	Fitter	Cut arm on edge of radiator
22/10/2017			Manual Handling	Y		Fracture (finger)	Labourer	IP got thumb trapped
23/10/2017			Manual Handling		Y	Strained back	Plasterer	Hurt back while carrying load
01/11/2017			Struck by		Y	Superficial injury	Labourer	Struck in eye by strap
06/11/2017			Fall	Y		Contusion - back	Construction	Fall (under 2ms) fell from pallet
08/11/2017			Slip/Trip		Y	Strain (lower limb)	Labourer	Slipped on floor twisted knee
13/11/2017			Machinery Contact		Y	contusion - trunk	other	Struck by guard of faulty machine
13/11/2017			Machinery Contact		Y	strain - wrist	other	Struck by guard of faulty machine
13/11/2017			Fall		Y	Strain - back	Plumber	Fall (over 2ms) Fell from ladder
23/11/2017			Fall		Y	Lower limb injury	Roofer	Fall (over 2ms) fell from roof
24/11/2017			Electric shock		Y	neck injury	Other	IP got shock from exit door
26/11/2017			Manual Handling		Y	Strain - back	Roofer	Hurt back while carrying ladders
27/11/2017			Machinery Contact		Y	Fracture (finger)	other	Got arm caught in moving machine
29/11/2017			Struck by		Y	Hand injury	Joiner	Struck by bit from drill
30/11/2017			Struck by		Y	Fracture (finger)	Bricklayer	Struck by chop saw
30/11/2017			Manual Handling	Y		laceration - hand	Construction	cut hand on piece of metal
04/12/2017			Manual Handling		Y	Strain - back	Roofer	Twisted back while carrying ladders
04/12/2017			Manual Handling	Y		Strain - back	Steel erector	Hurt back while lifting a bar
06/12/2017			Machinery Contact		Y	Strain - neck	Other	IP on tandemn roller which hit lorry
07/12/2017			Slip/trip		Y	Strain - ankle	other	IP slipped on floor, hurting back
08/12/2017			Struck by		Y	Laceration - finger	Plasterer	Struck by bent blade of saw
15/12/2017			Struck by		Y	Superficial injury	Construction	IP hit in eye by chip of boulder
18/12/2017			Manual Handling		Y	Strain - Upper limb	Construction	Hurt himself while carrying load

19/12/2017			Fall		Y	Strain - ankle	Construction	Fall (under 2ms) fell from pallet
	17	1	31	6	25			
Totals	17	1	31	12	37			
		Dangerous occurrences - 5						