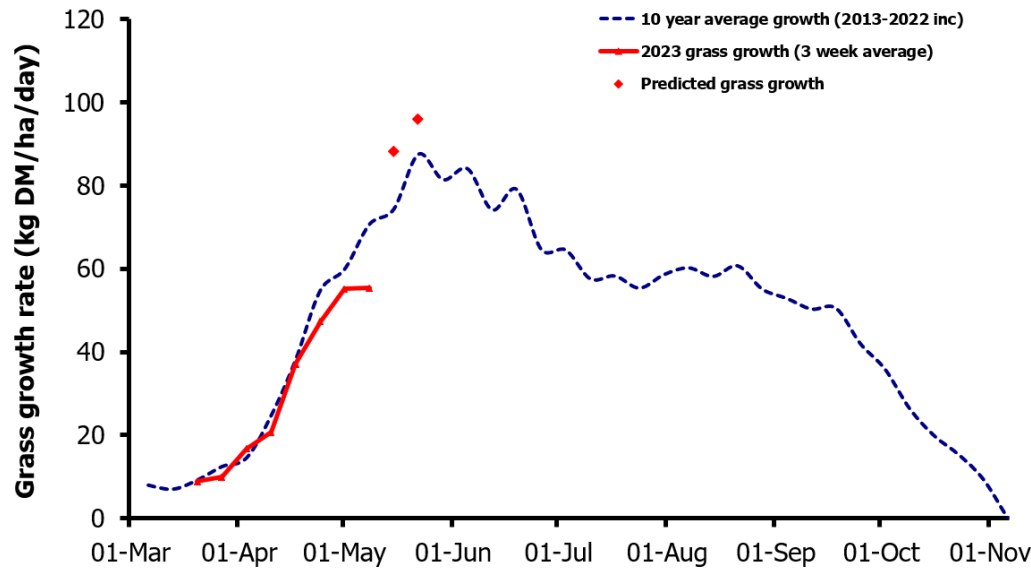
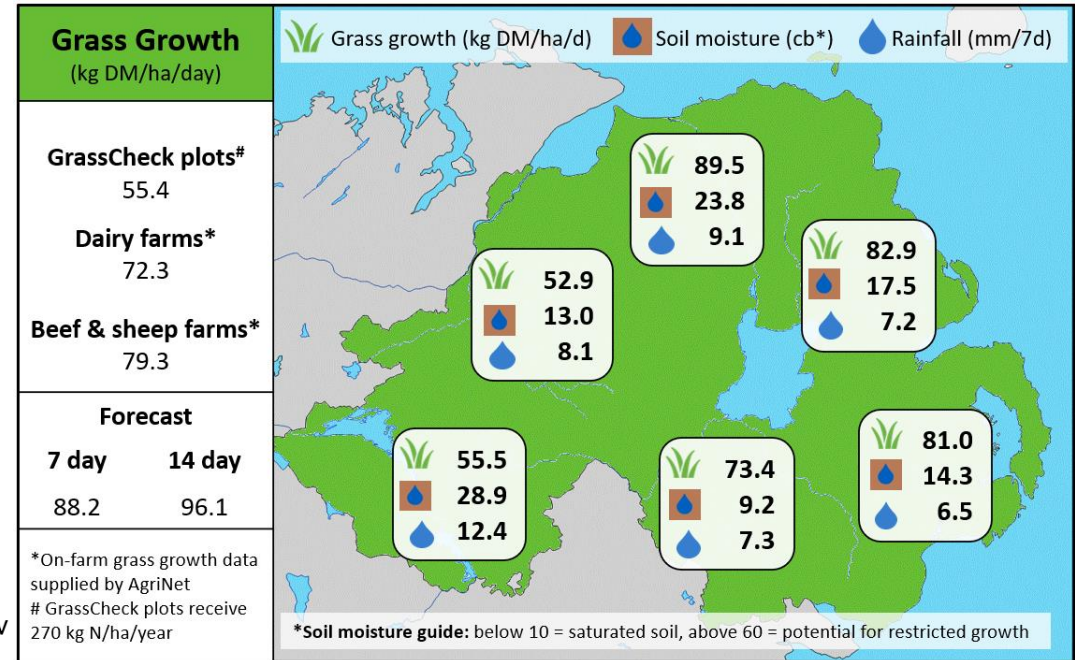


Week Beginning 8th May 2023



MANAGEMENT NOTES:

- Grass growth has been variable between counties and the flexibility in early season management on farms has helped them out-perform the plots so far this season. Grass growth is forecast to reach peak within the next fortnight.
- On many farms, growth will surpass demand. Measure regularly and use a projected grass wedge planner to help make the most appropriate decisions.
- Maintain control of grazing by targeting pre-grazing covers of 2800-2900 kg DM/ha, an AFC of 2100-2200 kg DM/ha and a rotation length of 18 to 20 days
- Grazing conditions have made achieving good grazing residuals difficult, target residuals of 4cm where possible before stem content increases.
- Complete reseeding and oversowing clover now where conditions allow.



| Value of Grass | | Grass Quality | |
|---|------|---------------|------|
| Dairy – maintenance plus (M+) (kg/cow/day)* | 19.4 | DM (%) | 16.4 |
| Growing animals – daily live weight gain (kg/head/day)** | 0.96 | CP (% DM) | 17.8 |
| *M+ calculated assuming: 650kg cow, and 15 kg DMI. Maintenance=75 MJ/day, 5.3 MJ/kg milk **Beef daily gain assuming: 300 kg beef steer, and 6.6 kg DMI. Maintenance=35 MJ/day, 40 MJ/kg gain | | WSC (% DM) | 13.9 |
| | | ME (MJ/kg DM) | 11.1 |