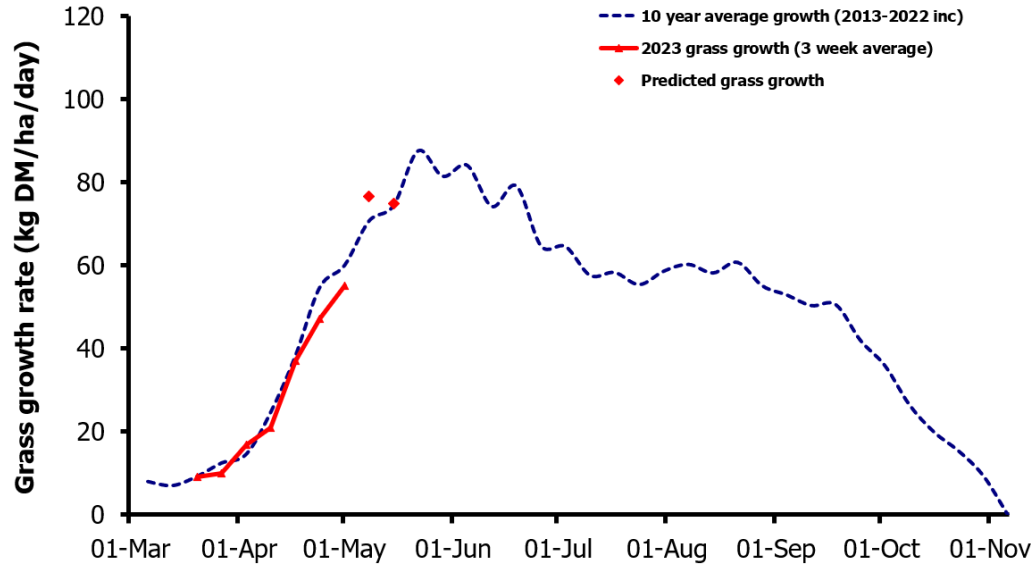
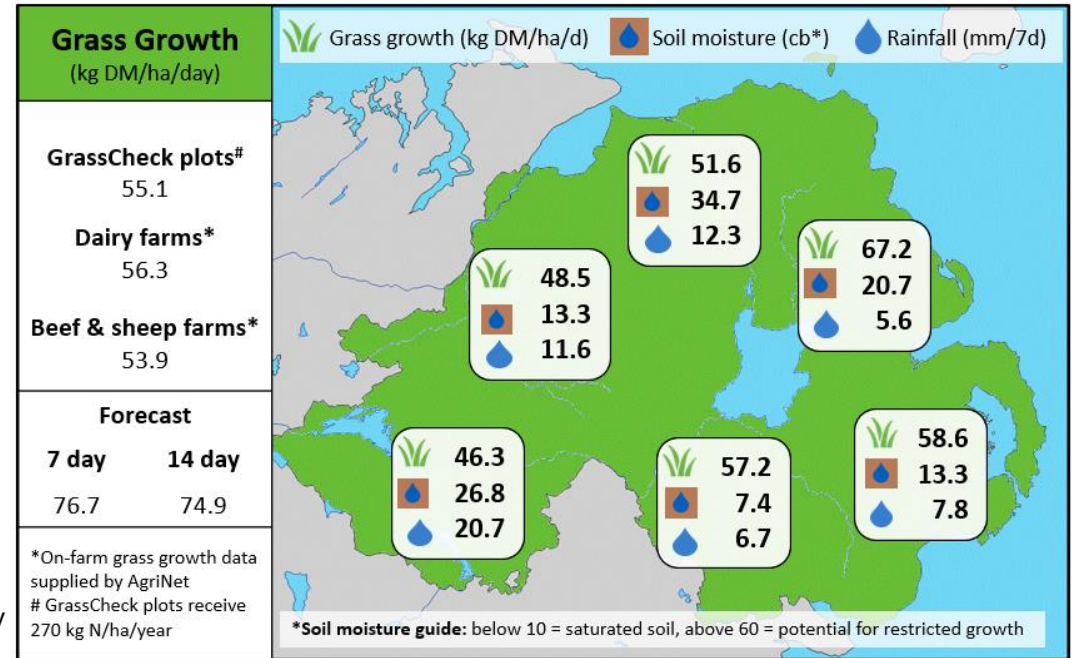


Week Beginning 1st May 2023



MANAGEMENT NOTES:

- Grass growth is predicted to rise sharply over the coming days in line with the long-term av. Measure and budget grass weekly to manage the peak.
- Rainfall has been variable, with unsettled conditions set to continue.
- The difficult grazing conditions over the past months have meant grazing residuals have suffered. Target good grazing residuals over the next fortnight before stem starts to appear in swards and grass quality declines as a result.
- Spring is the ideal time to reseed and incorporate white clover into grazing swards, due to suitable soil temperature, soil moisture and daylight hours.
- Aim to ensile high quality grass silage where possible, to reduce feed costs this coming winter. Rapid wilting and good consolidation of the pit are key.



Value of Grass		Grass Quality	
Dairy – maintenance plus (M+) (kg/cow/day)*	21.5	DM (%)	18.3
Growing animals – daily live weight gain (kg/head/day)**	1.07	CP (% DM)	16.5
*M+ calculated assuming: 650kg cow, and 15 kg DMI. Maintenance=75 MJ/day, 5.3 MJ/kg milk **Beef daily gain assuming: 300 kg beef steer, and 6.6 kg DMI. Maintenance=35 MJ/day, 40 MJ/kg gain		WSC (% DM)	16.7
		ME (MJ/kg DM)	11.8