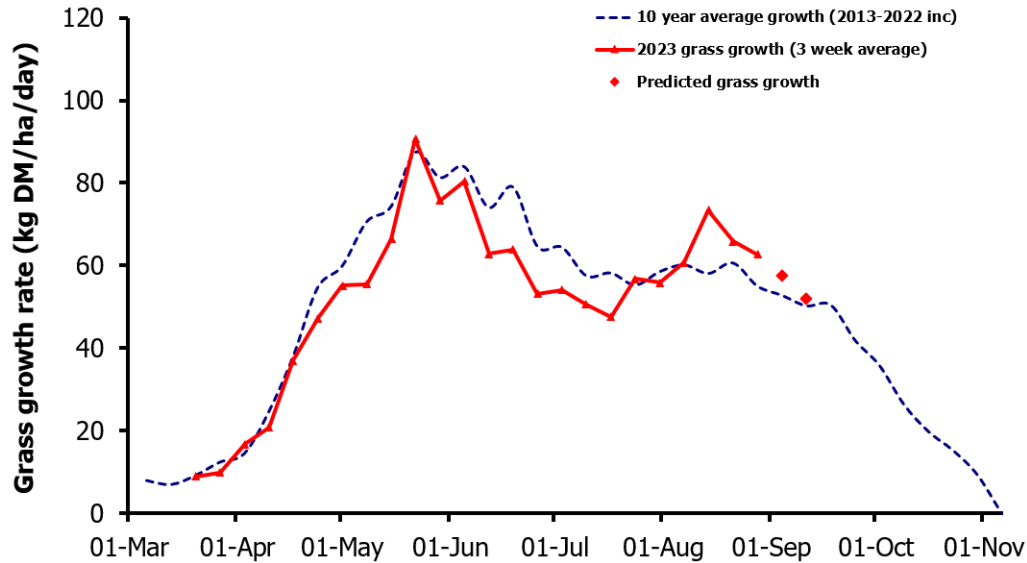
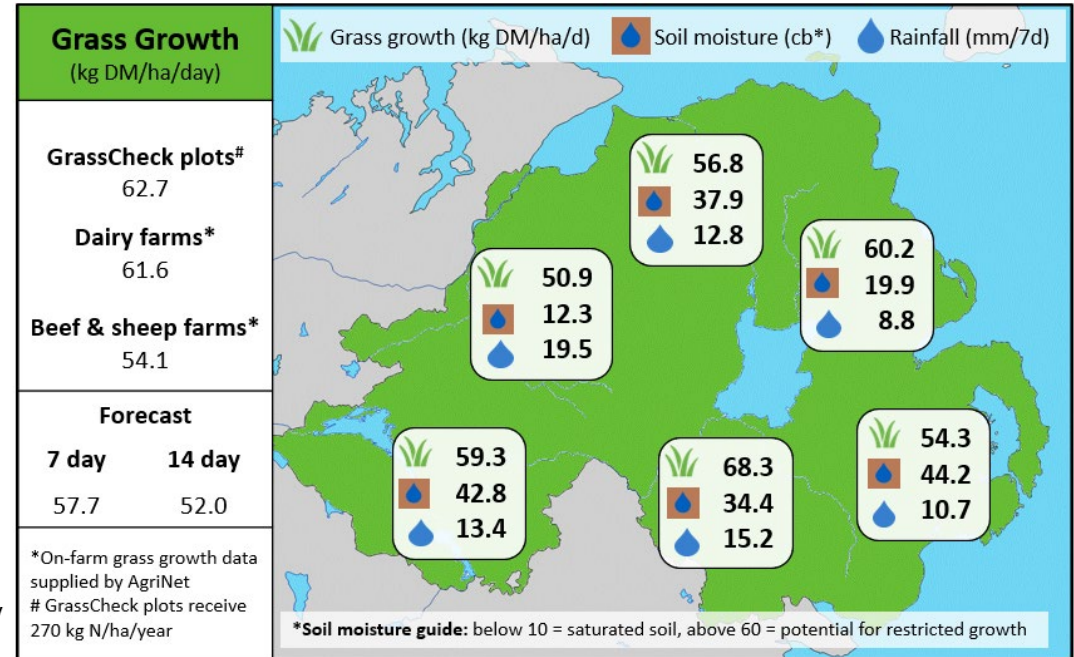


Week Beginning 28th August 2023



MANAGEMENT NOTES:

- Grass growth is above the LT av. and is set to continue to do so over the next 7 days
- Rotation length should have been increased gradually through Aug to 30 days on 1st Sept, with an AFC between 2,250 and 2,500 kg DM/ha depending on stocking rate, to set the grazing platform up for extending the grazing season into the Autumn.
- If grazing swards with a high clover content, be aware of the risk of bloat and take suitable measures, such as limiting allocations with a strip wire, introduce a fibre source, provide bloat oil through drinking water and avoid moving animals on and off
- Conditions continue to be challenging for grazing and silage harvesting. Use the range of wet weather grazing techniques and limit damage to swards where possible.
- Weather has made weed control this season a difficult task. Target paddocks for weed control now in late Aug, especially paddocks marked for reseeding next year.



Value of Grass		Grass Quality	
Dairy – maintenance plus (M+) (kg/cow/day)*	14.1	DM (%)	15.0
Growing animals – daily live weight gain (kg/head/day)**	0.96	CP (% DM)	19.1
*M+ calculated assuming: 650kg cow, and 13.5 kg DMI. Maintenance=75 MJ/day, 5.3 MJ/kg milk **Beef daily gain assuming: 300 kg beef steer, and 6.6 kg DMI. Maintenance=35 MJ/day, 40 MJ/kg gain		WSC (% DM)	9.7
		ME (MJ/kg DM)	11.1