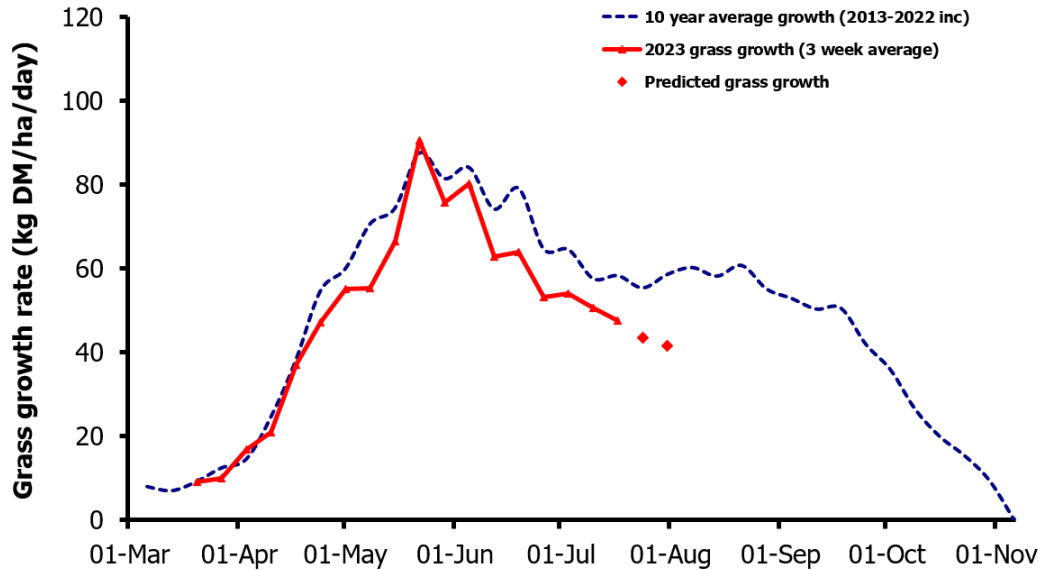
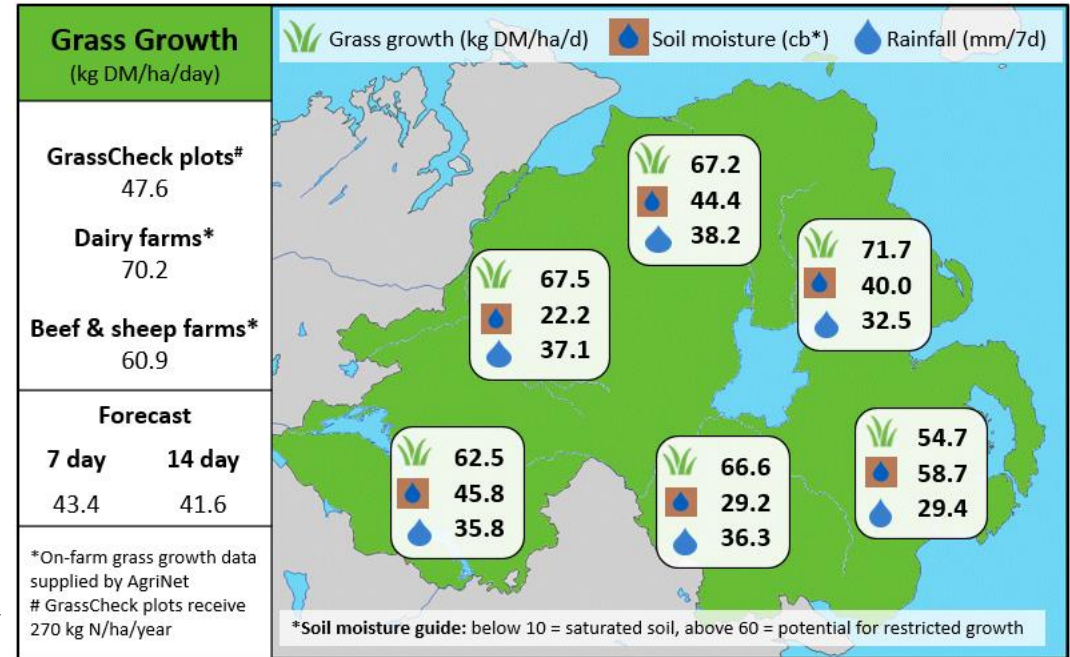


Week Beginning 17th July 2023



MANAGEMENT NOTES:

- Grass growth is forecast to fall below the LT av. for the next fortnight, however on farm growth is continuing to remain ahead of plot growth.
- A lot of rain has fallen this past week, causing low grass DM and potentially unsettled grazing livestock combined with sticky ground conditions.
- Continue to manage demand against grass growth and maintain an AFC at a minimum of 2,100 – 2,200 kg DM/ha. Use a grass surplus as an opportunity to remove paddocks with poor quality and pre-mow/top where necessary.
- Now is a good time to assess the first half of the grazing season. Consider the amount of grass grown compared with previous years and make note of areas of the farm which need improvement, such as swards or infrastructure.



Value of Grass		Grass Quality	
Dairy – maintenance plus (M+) (kg/cow/day)*	17.5	DM (%)	16.6
Growing animals – daily live weight gain (kg/head/day)**	0.97	CP (% DM)	16.3
*M+ calculated assuming: 650kg cow, and 15 kg DMI. Maintenance=75 MJ/day, 5.3 MJ/kg milk **Beef daily gain assuming: 300 kg beef steer, and 6.6 kg DMI. Maintenance=35 MJ/day, 40 MJ/kg gain		WSC (% DM)	14.2
		ME (MJ/kg DM)	11.2