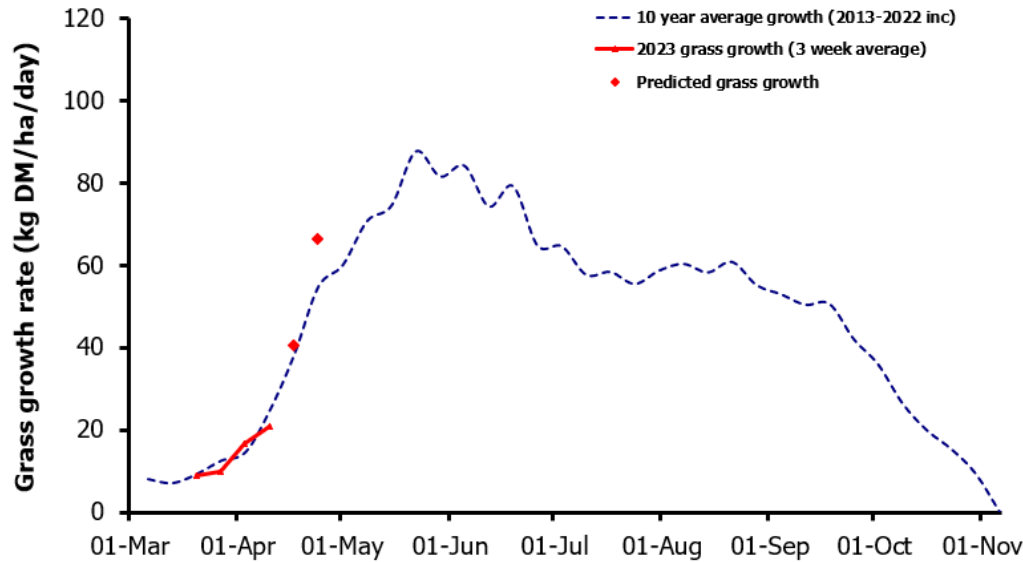
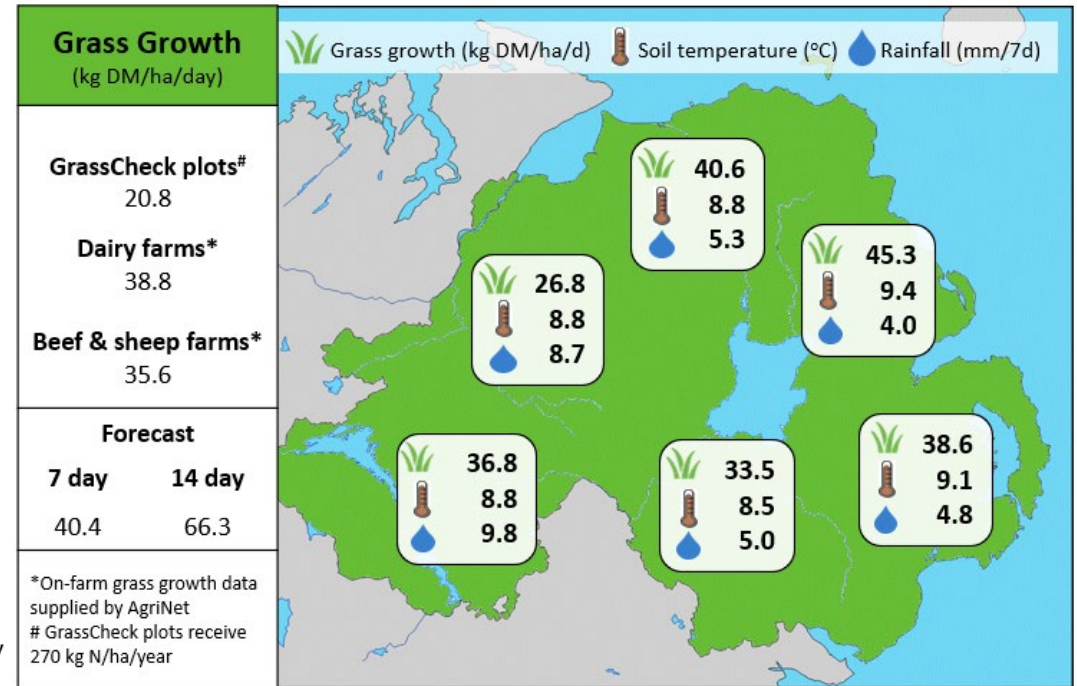


Week Beginning 10th April 2023



MANAGEMENT NOTES:

- Grass growth is predicted to increase sharply over the next 7 and 14 days.
- Walk the farm regularly as there are great drying conditions between and following rainfall, so be proactive about picking out suitable areas for grazing.
- There is a huge variability in the percentage of the first rotation grazed, av. farm cover and regrowth's across Grasscheck farms and across the province.
- If the av. farm cover is excessive and/or there is less than 50% of the first rotation grazed, consider identifying areas now that could be taken out as surplus at the first available opportunity, to help create a grazing wedge.
- When moving to the 2nd rotation keep av. farm cover above 2100kgDM/ha
- Apply fertiliser up to date, in line with your nutrient management plan.



Value of Grass		Grass Quality	
Dairy – maintenance plus (M+) (kg/cow/day)*	20.6	DM (%)	20.7
Growing animals – daily live weight gain (kg/head/day)**	1.02	CP (% DM)	19.1
*M+ calculated assuming: 650kg cow, and 15 kg DMI. Maintenance=75 MJ/day, 5.3 MJ/kg milk **Beef daily gain assuming: 300 kg beef steer, and 6.6 kg DMI. Maintenance=35 MJ/day, 40 MJ/kg gain		WSC (% DM)	15.6
		ME (MJ/kg DM)	11.5