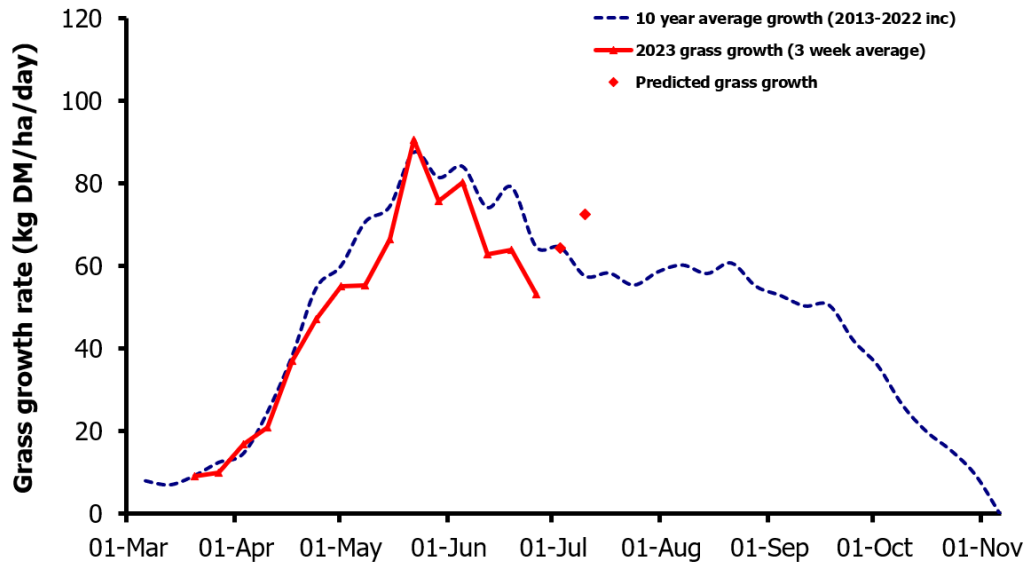
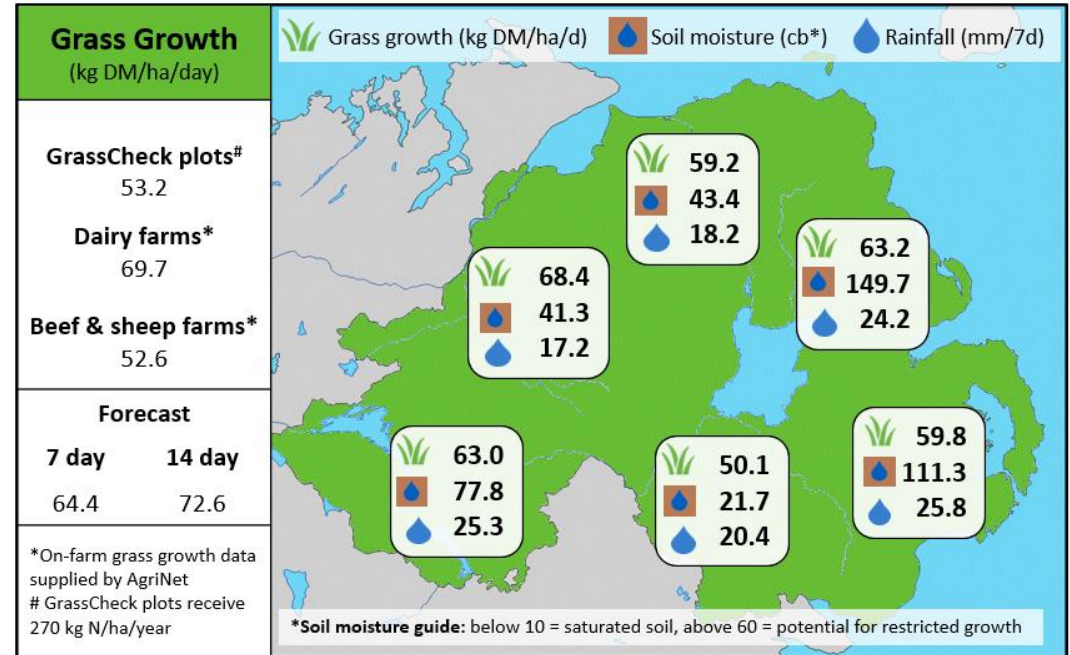


Week Beginning 26th June 2023



MANAGEMENT NOTES:

- Most areas have received enough rain to revive grass growth and for those who have missed the showers, there is a good amount of rain in the forecast.
- Grass growth rates are forecast to meet and exceed the LT av. in the next 7 and 14 days respectively, with increased soil moisture and high soil temps.
- The challenge will be when to remove the extra supplement and when to skip paddocks and remove surplus grass. Measure the grazing platform at least weekly to make the best & most timely decisions in this transition.
- Removing paddocks will help to address some of the poorer quality paddocks with a high stem content as a result of the previous conditions.
- Continue to apply fertiliser again in line with a nutrient management plan.



Value of Grass		Grass Quality	
Dairy – maintenance plus (M+) (kg/cow/day)*	16.7	DM (%)	19.8
Growing animals – daily live weight gain (kg/head/day)**	0.92	CP (% DM)	16.4
*M+ calculated assuming: 650kg cow, and 15 kg DMI. Maintenance=75 MJ/day, 5.3 MJ/kg milk **Beef daily gain assuming: 300 kg beef steer, and 6.6 kg DMI. Maintenance=35 MJ/day, 40 MJ/kg gain		WSC (% DM)	12.9
		ME (MJ/kg DM)	10.9