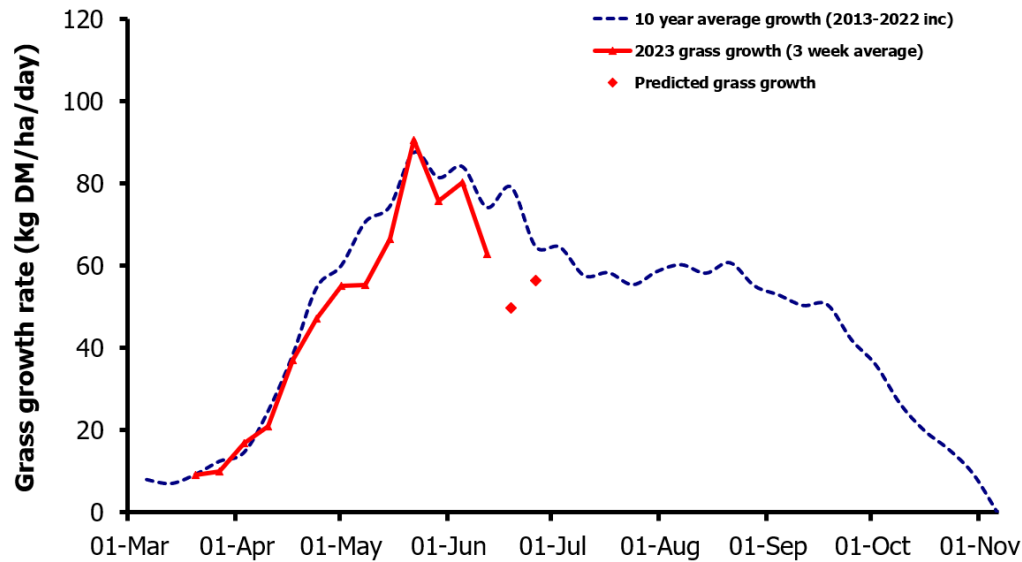
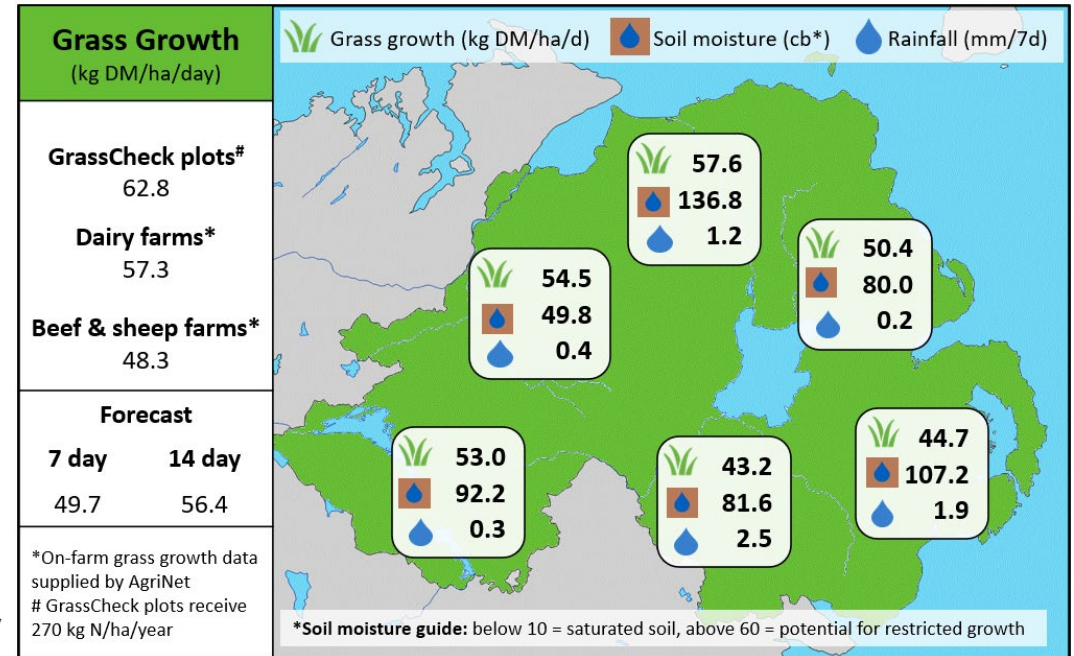


## Week Beginning 12<sup>th</sup> June 2023



### MANAGEMENT NOTES:

- Grass growth rates are forecast to drop further before bouncing back in 14 days, with the promise of some rain in the forecast to restore soil moisture.
- Measure 3 times in 2 weeks to budget demand with growth, especially if feeding supplement. Hold rotation length > 21 days & AFC > 2100 kg DM/ha.
- Complete a winter fodder budget now. For many a late spring turnout will have depleted forage reserves. It is important to know early how much forage you still need to make to be self-sufficient and what you can afford to feed now in the dry spell or if alternative feed stocks should be considered.
- Applying fertiliser will have little effect until rain comes and there is also an increased risk of fertiliser running off hard ground in heavy downpour events.



| Value of Grass  |      | Grass Quality |      |
|---|------|---------------|------|
| Dairy – maintenance plus (M+) (kg/cow/day)*   | 17.8 | DM (%)        | 22.2 |
| Growing animals – daily live weight gain (kg/head/day)**  | 0.99 | CP (% DM)     | 13.1 |
| *M+ calculated assuming: 650kg cow, and 15 kg DMI. Maintenance=75 MJ/day, 5.3 MJ/kg milk<br>**Beef daily gain assuming: 300 kg beef steer, and 6.6 kg DMI. Maintenance=35 MJ/day, 40 MJ/kg gain |      | WSC (% DM)    | 18.5 |
|   |      | ME (MJ/kg DM) | 11.3 |