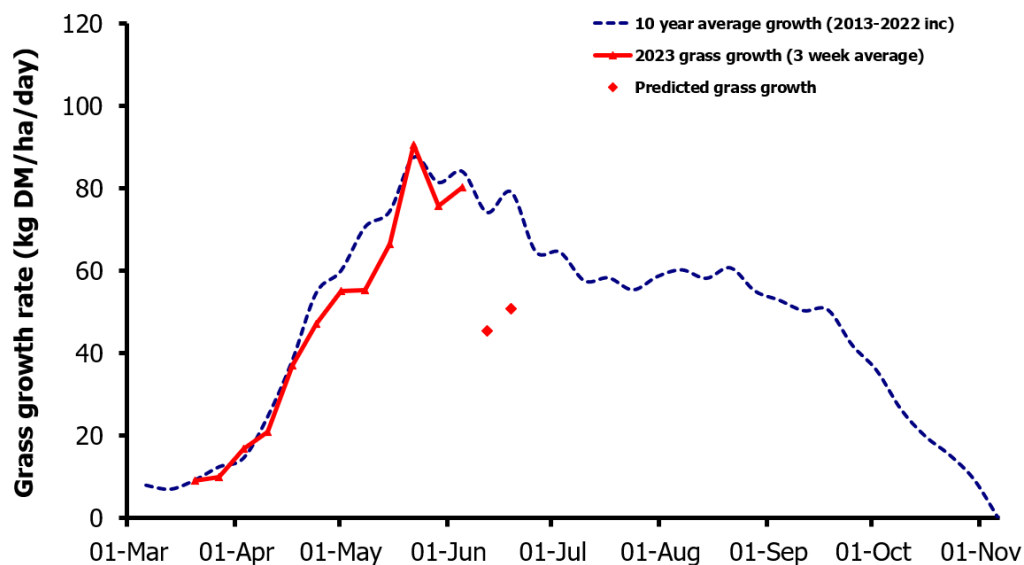
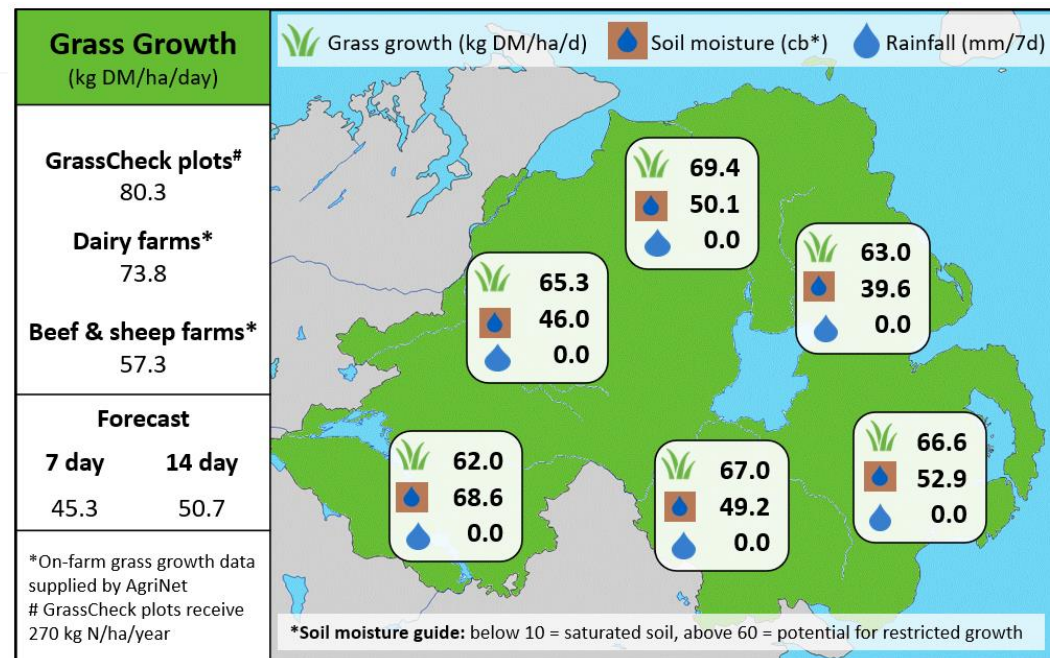


Week Beginning 5th June 2023



MANAGEMENT NOTES:

- Grass growth has remained close to the LT av. however it is predicted to dramatically decrease over the next 14 days due to decreasing soil moisture.
- Ideally measure grass twice per week or at least 3 times in 2 weeks in these conditions to know what grass you have, as there will be a lot of variation.
- To manage through the current dry period, increase supplement feed and/or buffer feed to maintain rotation length at a minimum of 21 days and keep the AFC above 2,100 kg DM/ha. Remove additional stock from the grazing platform and bring in extra areas if possible. Avoid pre-mowing to correct grass quality as this will further depress growth. Animals should be content and grazing well as grass dry matter % is high, however CP % is low.



Value of Grass		Grass Quality	
Dairy – maintenance plus (M+) (kg/cow/day)*	18.1	DM (%)	21.9
Growing animals – daily live weight gain (kg/head/day)**	1.01	CP (% DM)	13.2
*M+ calculated assuming: 650kg cow, and 15 kg DMI. Maintenance=75 MJ/day, 5.3 MJ/kg milk **Beef daily gain assuming: 300 kg beef steer, and 6.6 kg DMI. Maintenance=35 MJ/day, 40 MJ/kg gain		WSC (% DM)	18.6
		ME (MJ/kg DM)	11.4