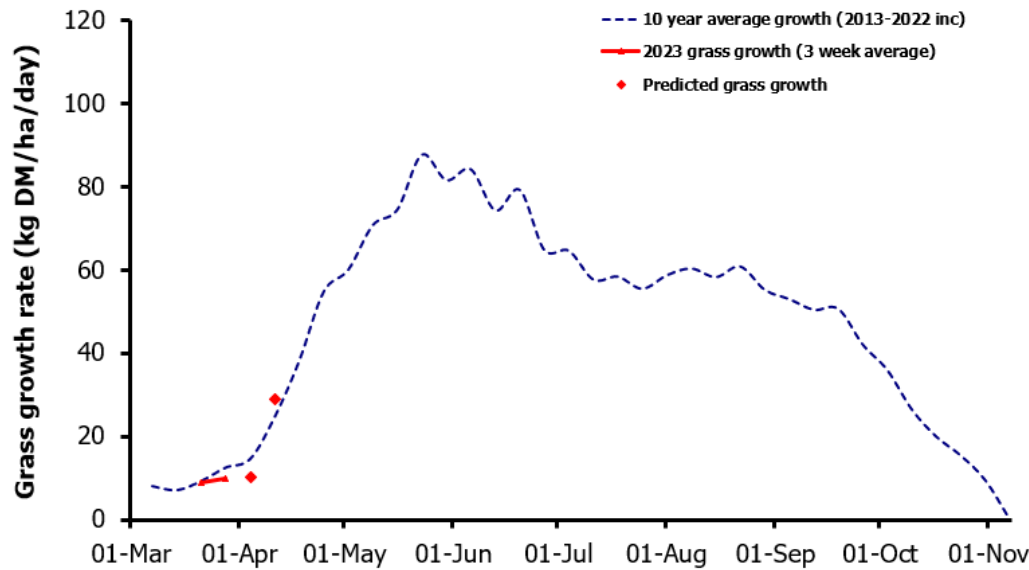
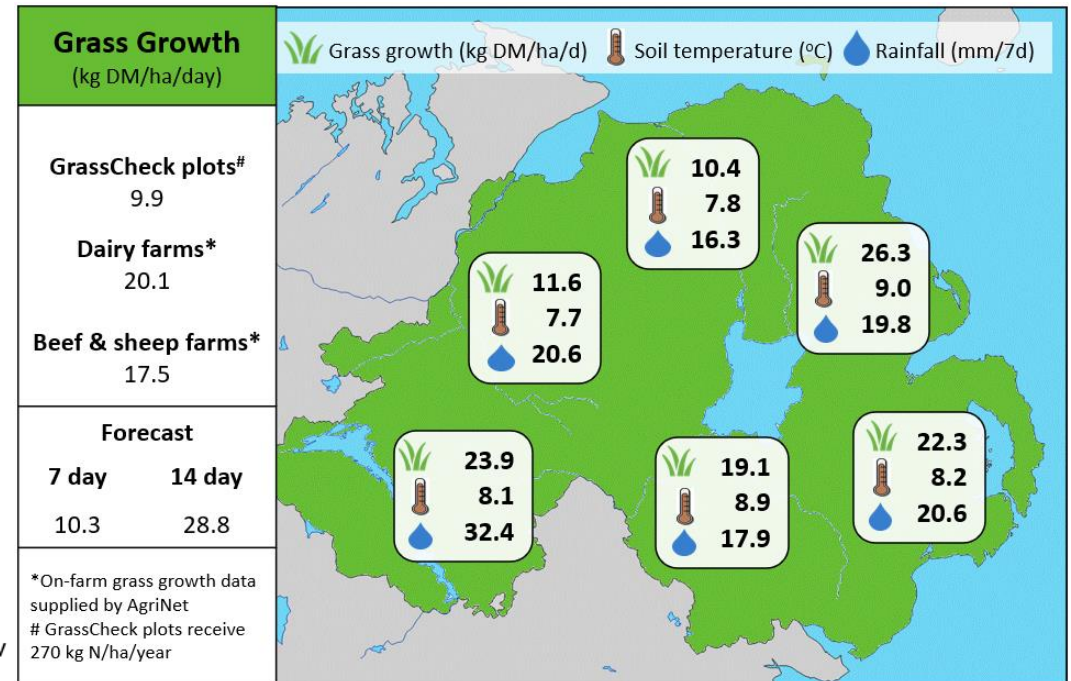


## Week Beginning 27<sup>th</sup> March 2023



### MANAGEMENT NOTES:

- On farm grass growth has exceeded plot growth predictions, potentially due to farms having a higher av. farm cover at the start of the season.
- It will be important to measure the grazing platform weekly from now on.
- Every farm is different and it's important to have a grazing plan to work off.
- Grass growth and covers will change rapidly over the next 2 to 3 weeks.
- Good management of this growth will be important to protect the quality of the grass in subsequent grazing rotations in the early part of the season.
- High levels of rainfall over the past number of weeks have made grazing conditions difficult. Prioritise grazing where possible, using on-off grazing and targeting the drier areas and lower covers to get a larger area grazed.



Value of Grass		Grass Quality	
Dairy – maintenance plus (M+) (kg/cow/day)*	19.0	DM (%)	18.4
Growing animals – daily live weight gain (kg/head/day)**	1.06	CP (% DM)	20.1
*M+ calculated assuming: 650kg cow, and 15 kg DMI. Maintenance=75 MJ/day, 5.3 MJ/kg milk **Beef daily gain assuming: 300 kg beef steer, and 6.6 kg DMI. Maintenance=35 MJ/day, 40 MJ/kg gain		WSC (% DM)	13.9
		ME (MJ/kg DM)	11.7