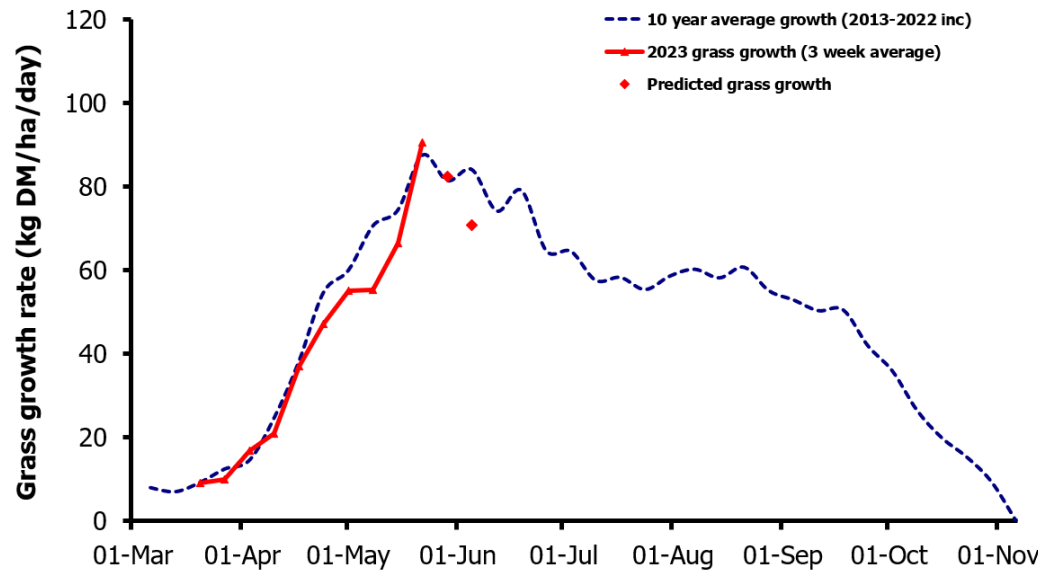
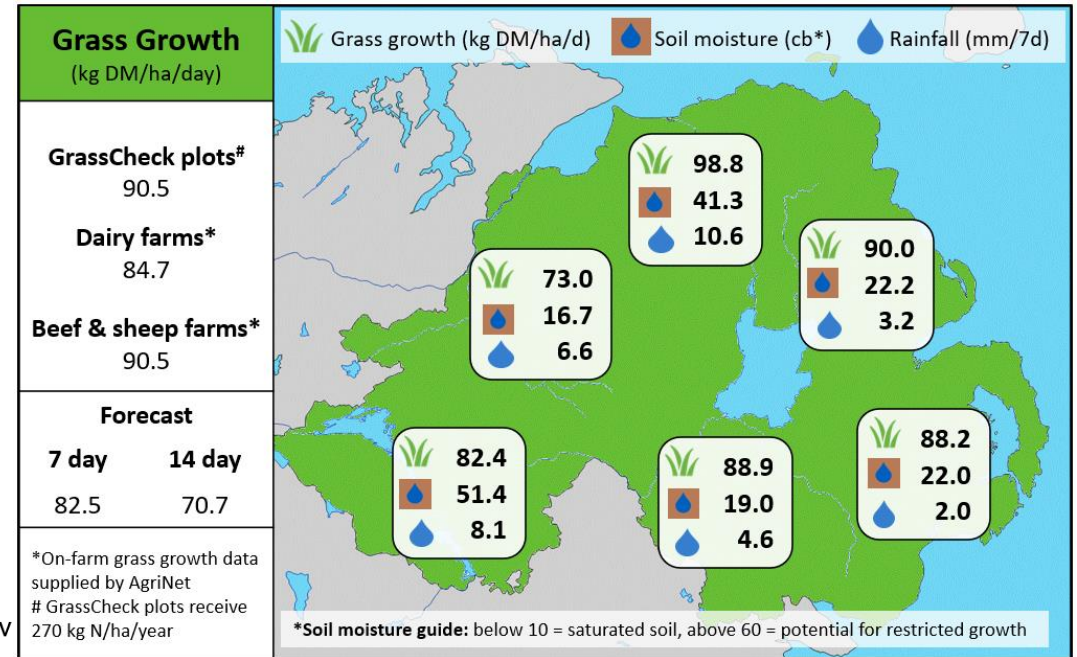


Week Beginning 22nd May 2023



MANAGEMENT NOTES:

- Grass growth is soaring across the province and it is forecast to remain at the top end of the grass growth curve for at least the next fortnight.
- Measure the grazing platform 3 times in 2 weeks to keep control of grass.
- Take the opportunity to correct grass quality whilst growth exceeds demand. Challenging conditions in spring led to poor grazing residuals and reduced grass quality as a result. Identifying these areas to be removed as surplus bales is the best option. Grazing at lower covers is another option.
- Aim to enter pre-grazing covers of 2,800 - 3,000 kg DM/ha, every 18 – 21 days, over the next 4 grazing rotations to maximise profit and utilisation.
- Minimise supplement feeding to increase grass demand and utilisation.



Value of Grass		Grass Quality	
Dairy – maintenance plus (M+) (kg/cow/day)*	20.3	DM (%)	19.0
Growing animals – daily live weight gain (kg/head/day)**	1.01	CP (% DM)	15.2
*M+ calculated assuming: 650kg cow, and 15 kg DMI. Maintenance=75 MJ/day, 5.3 MJ/kg milk **Beef daily gain assuming: 300 kg beef steer, and 6.6 kg DMI. Maintenance=35 MJ/day, 40 MJ/kg gain		WSC (% DM)	17.2
		ME (MJ/kg DM)	11.4