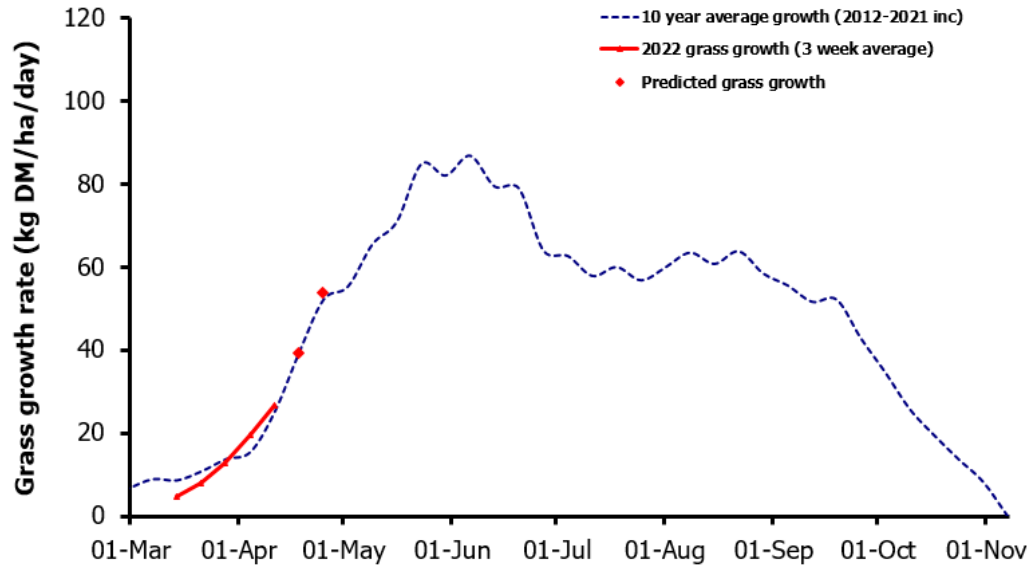
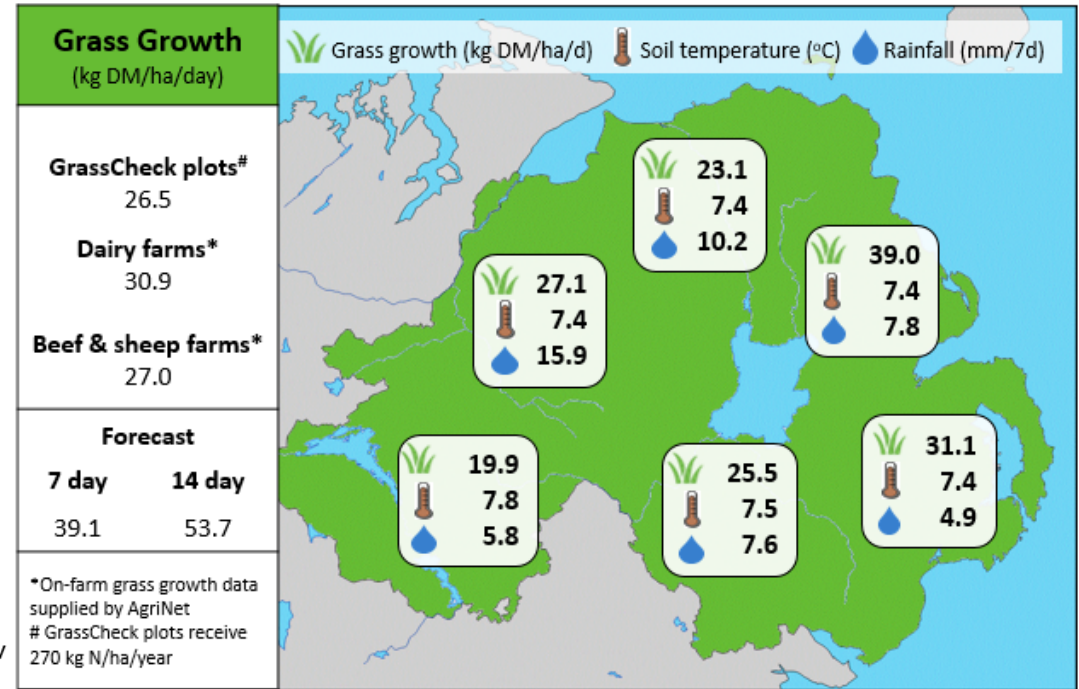


Week Beginning 11th April 2022



MANAGEMENT NOTES:

- Grass growth forecasts have exceeded recorded figures in recent weeks, driven partly by warmer forecast temperatures whereas significant overnight frosts have brought down soil temperatures and held grass growth back. As warmer weather arrives grass growth is still expected to improve this week.
- To keep quality grass in the diet, it might be worth skipping heavy covers towards the end of the first rotation and close this area for silage.
- Continue to take advantage of the relatively good ground conditions to graze swards out cleanly to ensure good quality regrowth.
- Silage ground should be closed and fertilised by the end of this week to target a good cut of quality silage by the end of May.



Value of Grass		Grass Quality	
Dairy – maintenance plus (M+) (kg/cow/day)*	21.5	DM (%)	20.9
Growing animals – daily live weight gain (kg/head/day)**	1.07	CP (% DM)	20.2
*M+ calculated assuming: 650kg cow, and 15 kg DMI. Maintenance=75 MJ/day, 5.3 MJ/kg milk **Beef daily gain assuming: 300 kg beef steer, and 6.6 kg DMI. Maintenance=35 MJ/day, 40 MJ/kg gain		WSC (% DM)	16.9
		ME (MJ/kg DM)	11.8