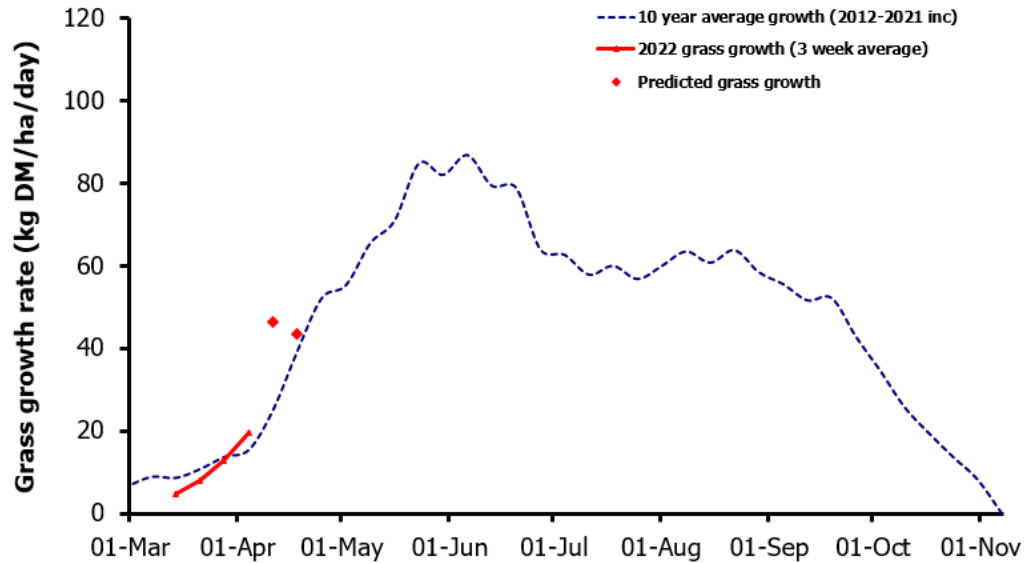
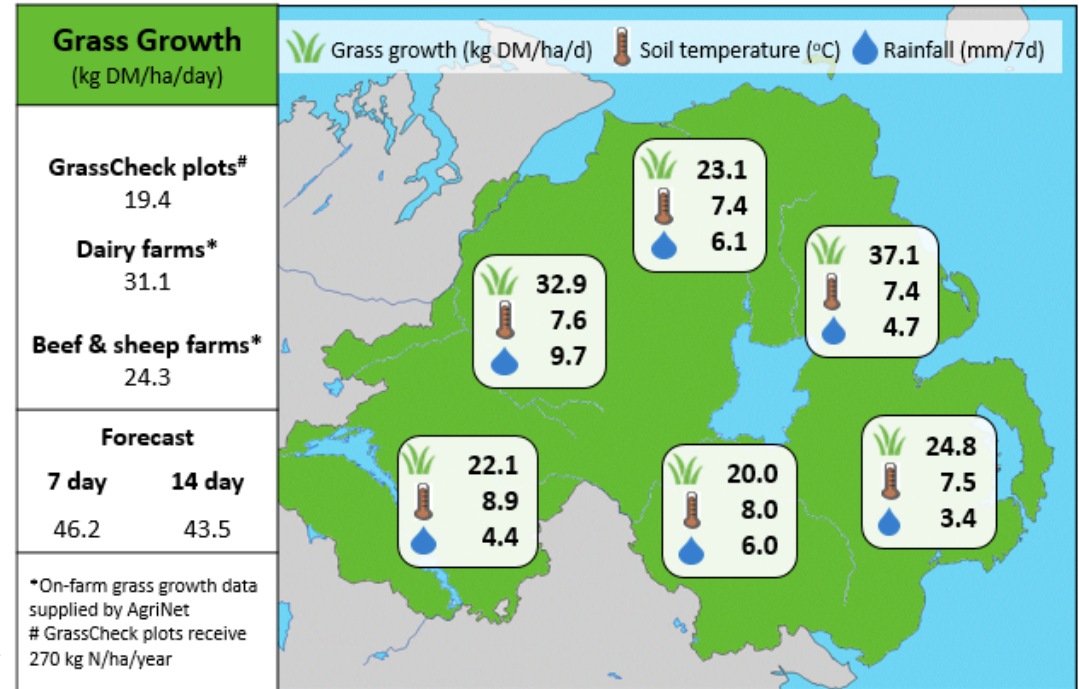


Week Beginning 4th April 2022



MANAGEMENT NOTES:

- Following a dry and settled spell, we see a return to unsettled conditions.
- Grass growth rates are predicted to rise over the next 7 days to 46.2 kg DM/ha, in line with the 10-year average.
- Prioritise maintaining grass in the animal's diet and turning out any additional stock that are suitable to graze, in order to establish a grazing wedge before grass growth rates and the average farm cover (AFC) increases.
- In the first rotation the AFC should not drop below 2,150 Kg DM/ha.
- Use your weekly grass measurement figures, together with your herd demand to prepare a feed budget and conserve silage where possible. Assess silage stocks and prepare a plan for the amount and area of silage required.



Value of Grass		Grass Quality	
Dairy – maintenance plus (M+) (kg/cow/day)*	21.2	DM (%)	21.1
Growing animals – daily live weight gain (kg/head/day)**	1.06	CP (% DM)	17.9
*M+ calculated assuming: 650kg cow, and 15 kg DMI. Maintenance=75 MJ/day, 5.3 MJ/kg milk **Beef daily gain assuming: 300 kg beef steer, and 6.6 kg DMI. Maintenance=35 MJ/day, 40 MJ/kg gain		WSC (% DM)	17.2
		ME (MJ/kg DM)	11.7