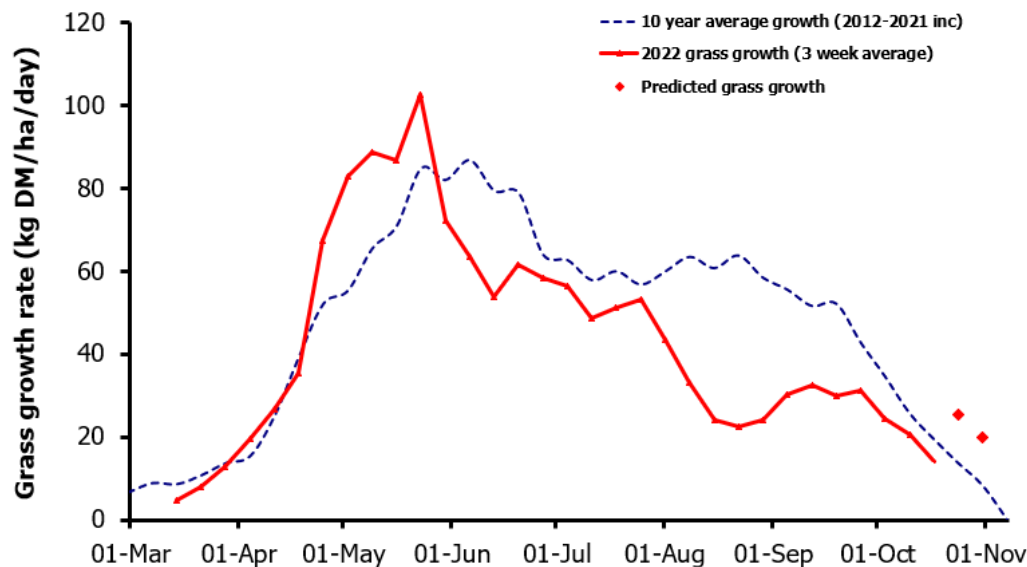
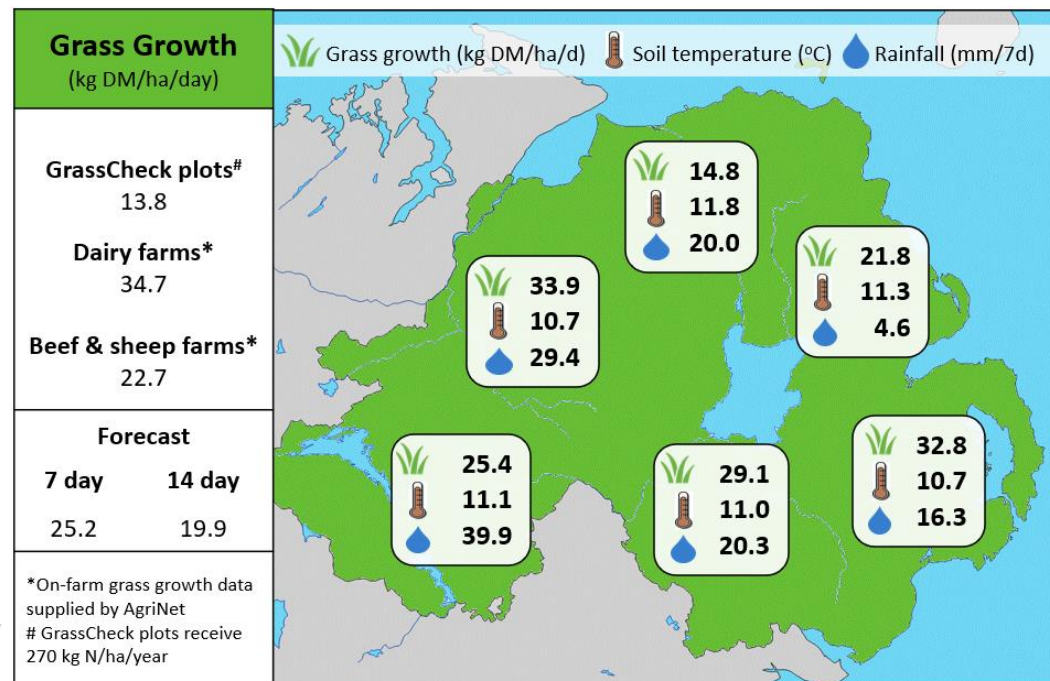


## Week Beginning 17<sup>th</sup> October 2022



### MANAGEMENT NOTES:

- This will be our final bulletin for 2022. Growth on the GrassCheck plots continues to lag behind the long-term average and hasn't managed to fully recover following the dry spell during August. Ground conditions are beginning to deteriorate, and housing of livestock is underway.
- GrassCheck plot yields for this season were 2.0t DM/ha below the long-term average (11.7t DM/ha), impacted mainly by the drought conditions during the summer. On-farm yields averaged 11.1t DM/ha, with less regional variation (1.4t DM/ha) compared to last year (2.0t DM/ha).
- Many thanks to our GrassCheck farmers and to the staff at AFBI, CAFRE and AgriSearch for their contributions this year.



Value of Grass		Grass Quality	
Dairy – maintenance plus (M+) (kg/cow/day)*	8.0	DM (%)	14.5
Growing animals – daily live weight gain (kg/head/day)**	0.97	CP (% DM)	20.8
*M+ calculated assuming: 650kg cow, and 10.5 kg DMI. Maintenance=75 MJ/day, 5.3 MJ/kg milk **Beef daily gain assuming: 300 kg beef steer, and 6.6 kg DMI. Maintenance=35 MJ/day, 40 MJ/kg gain		WSC (% DM)	9.5
		ME (MJ/kg DM)	11.2