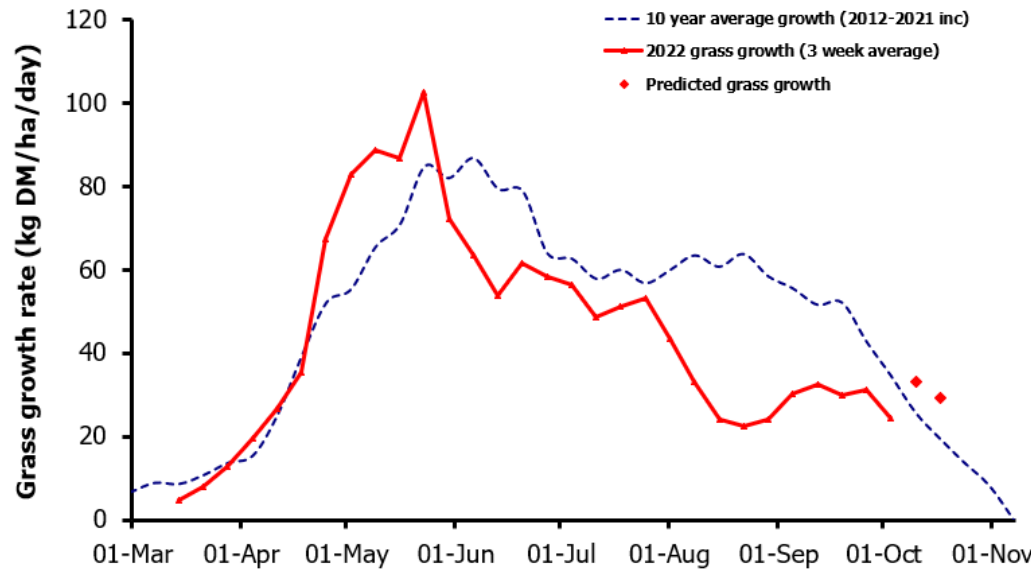
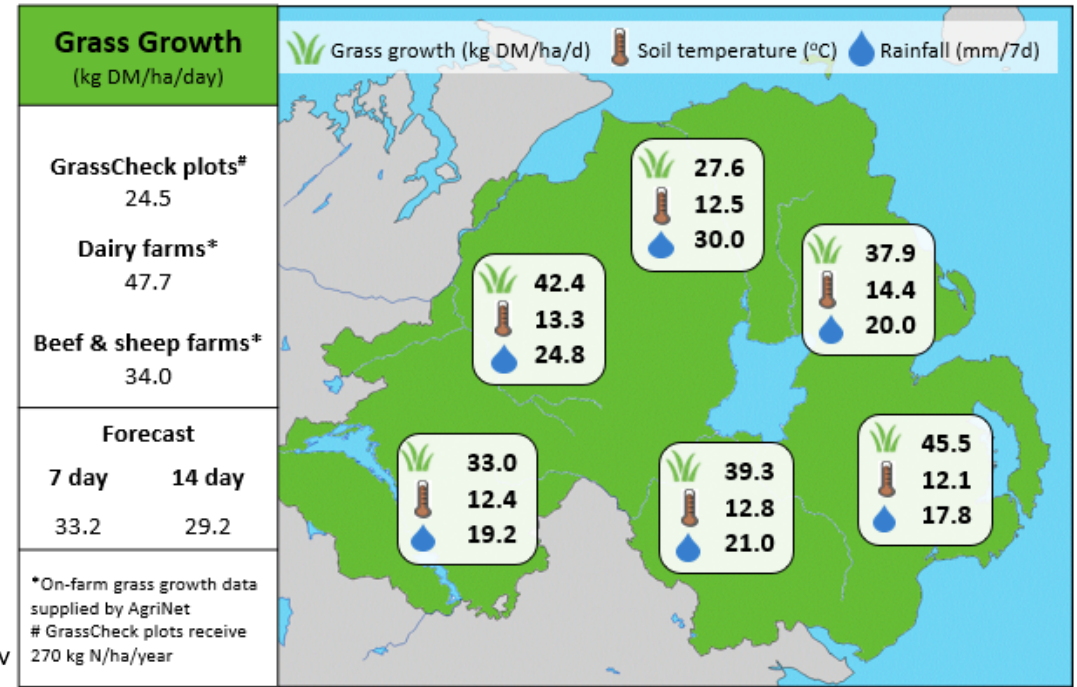


## Week Beginning 3<sup>rd</sup> October 2022



### MANAGEMENT NOTES:

- Plot growth is currently predicted to exceed the long-term average during the next two weeks albeit with a decline in line with the seasonal norm.
- It is important to achieve target residuals during this round to ensure quality grass for spring. Don't re-graze paddocks after this round, even if covers and conditions are suitable. Spring grass has more value than late autumn grass.
- Aim to graze drier fields first during the last round, to target for early turnout, as the first paddocks closed will have the heaviest covers next spring. It is also important that any heavy covers are also grazed before conditions deteriorate.
- The slurry spreading deadline is midnight on 15<sup>th</sup> October. Take every opportunity, conditions permitting, to spread slurry to have tanks emptied.



### Value of Grass

### Grass Quality

Dairy – maintenance plus (M+) (kg/cow/day)*	8.8	DM (%)	15.4
Growing animals – daily live weight gain (kg/head/day)**	1.04	CP (% DM)	21.7
*M+ calculated assuming: 650kg cow, and 10.5 kg DMI. Maintenance=75 MJ/day, 5.3 MJ/kg milk **Beef daily gain assuming: 300 kg beef steer, and 6.6 kg DMI. Maintenance=35 MJ/day, 40 MJ/kg gain		WSC (% DM)	10.8
		ME (MJ/kg DM)	11.6