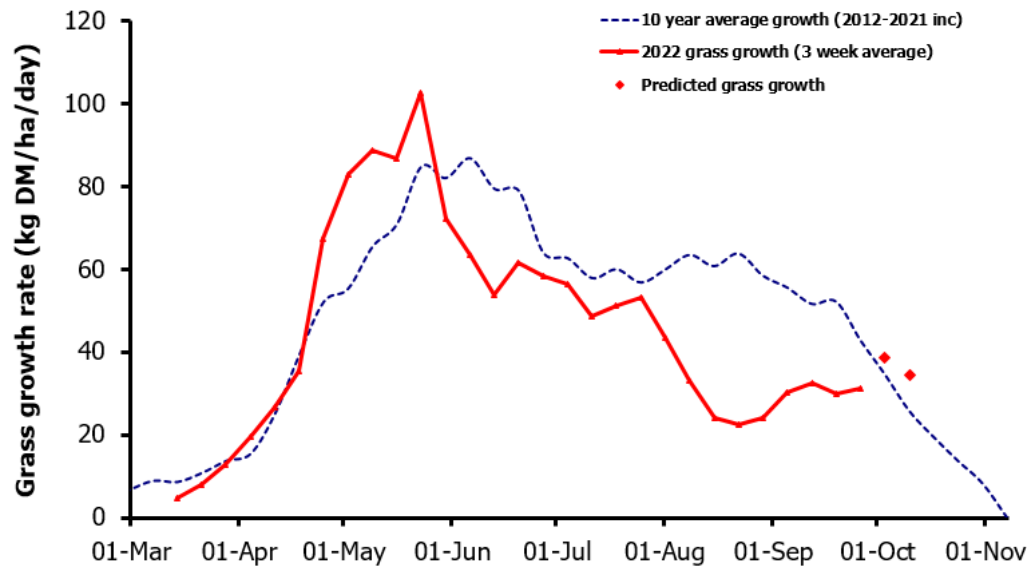
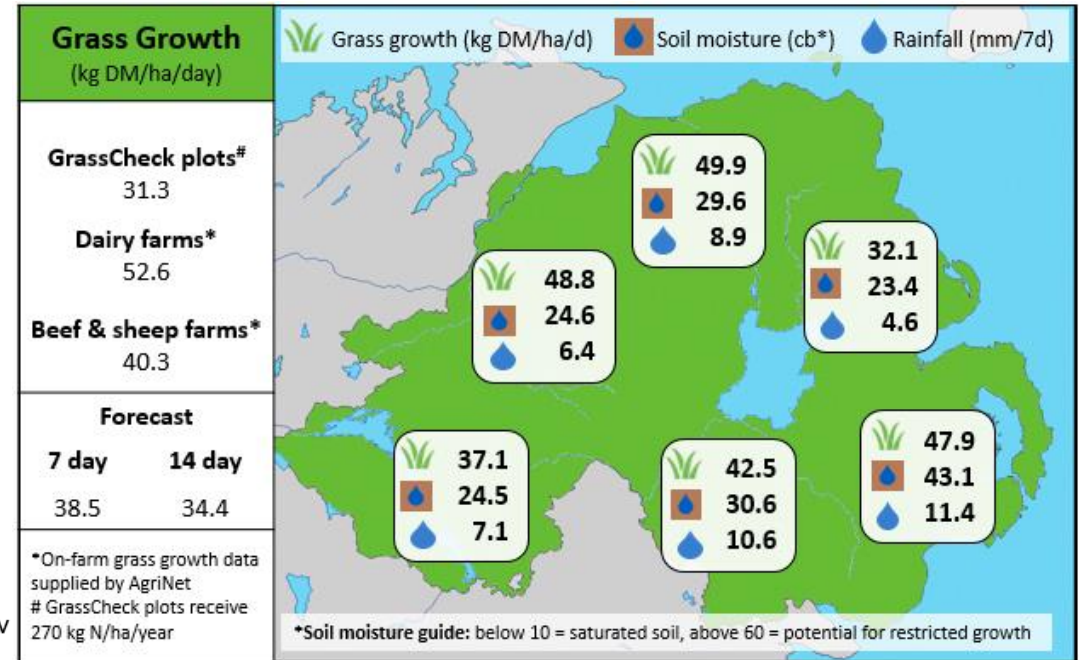


Week Beginning 26th September 2022



MANAGEMENT NOTES:

- Grass growth on farm is again ahead of the GC plots growth. Growth this week is predicted at 38.5kg/DM/ha/day due to lower temperatures and less daylight hours.
- AFC will peak on most farms this week, ideally at 2,500 – 2,675 Kg DM/ha.
- Have an autumn rotation budget in place, to help stretch the grass out for longer, which will increase the amount of grass grown and boost profitability.
- Plan where you want grass for grazing in early spring and close accordingly.
- Avoid grazing heavy covers on unsettled days and use strip wires for 12 hour allocations to avoid cattle travelling over and dirtying excess grass.
- The rotation length should increase from 35 to 40 days at start of Oct and for heavy land, the first paddocks grazed off tight and closed for the winter.



Value of Grass

Grass Quality

Dairy – maintenance plus (M+) (kg/cow/day)*	12.3	DM (%)	16.6
Growing animals – daily live weight gain (kg/head/day)**	1.06	CP (% DM)	21.2
*M+ calculated assuming: 650kg cow, and 12.0 kg DMI. Maintenance=75 MJ/day, 5.3 MJ/kg milk **Beef daily gain assuming: 300 kg beef steer, and 6.6 kg DMI. Maintenance=35 MJ/day, 40 MJ/kg gain		WSC (% DM)	11.7
		ME (MJ/kg DM)	11.7