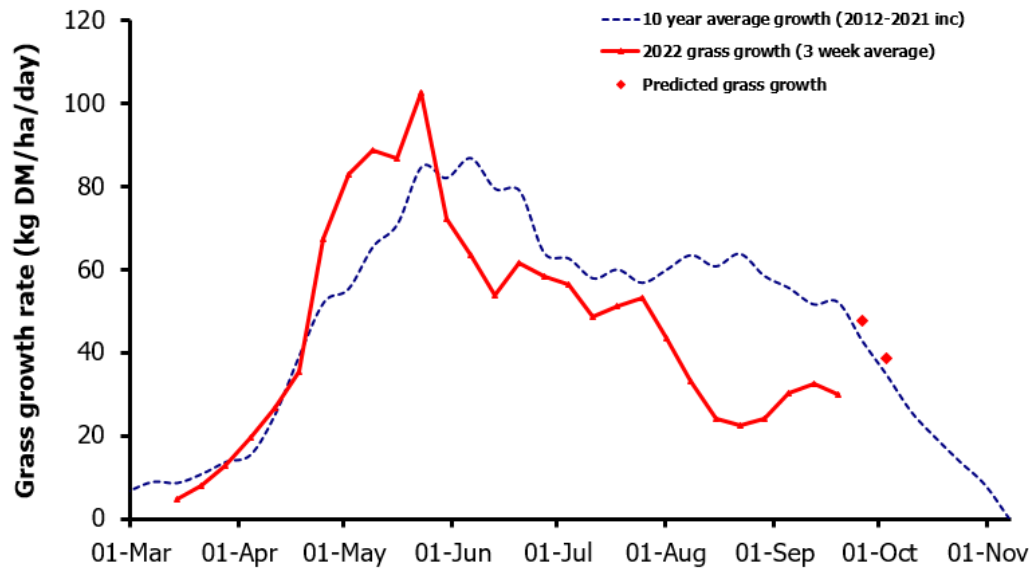
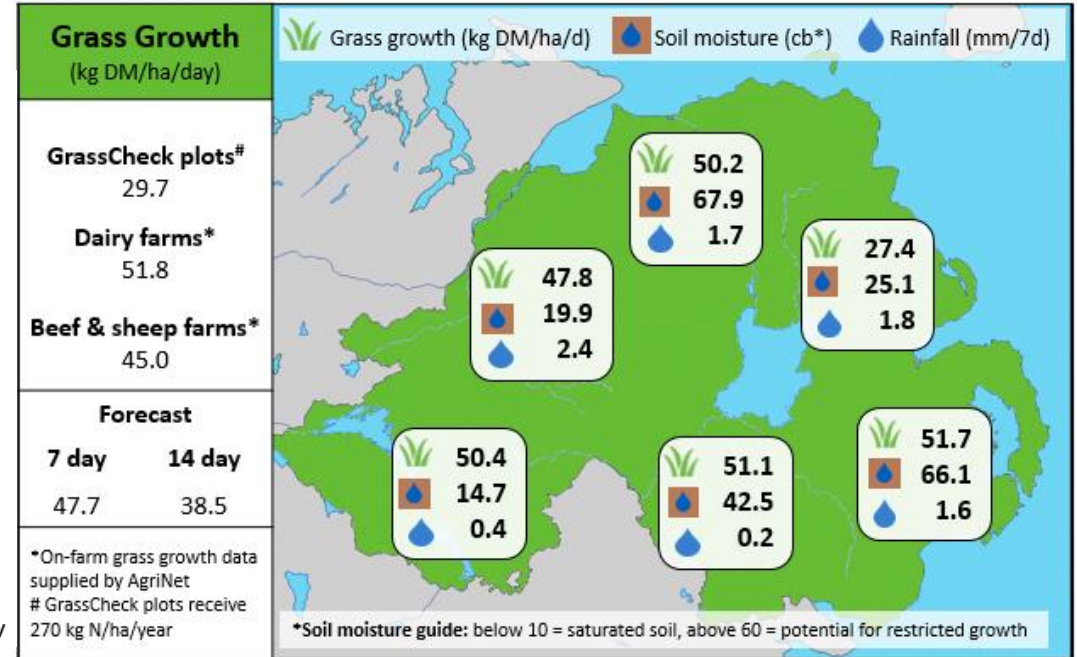


Week Beginning 19th September 2022



MANAGEMENT NOTES:

- Grass growth is forecast to return to the seasonal long-term average over the next fortnight with continuing favourable weather. The rebound in growth has taken longer than expected; however, it is worth noting that on-farm growth is currently exceeding growth on the GrassCheck plots.
- Rotation length should now be 35 days. Increase supplementation if Ave. farm cover is below target to reduce demand and build covers.
- Aim to graze drier fields first during the last round and make sure to achieve target residuals, to ensure quality grass for spring turnout.
- With growing conditions remaining favourable, a good response should be seen to slurry applications, especially if applied using LESSE.



Value of Grass

Grass Quality

Dairy – maintenance plus (M+) (kg/cow/day)*	11.7	DM (%)	15.2
Growing animals – daily live weight gain (kg/head/day)**	1.01	CP (% DM)	20.6
*M+ calculated assuming: 650kg cow, and 12.0 kg DMI. Maintenance=75 MJ/day, 5.3 MJ/kg milk **Beef daily gain assuming: 300 kg beef steer, and 6.6 kg DMI. Maintenance=35 MJ/day, 40 MJ/kg gain		WSC (% DM)	9.8
		ME (MJ/kg DM)	11.4