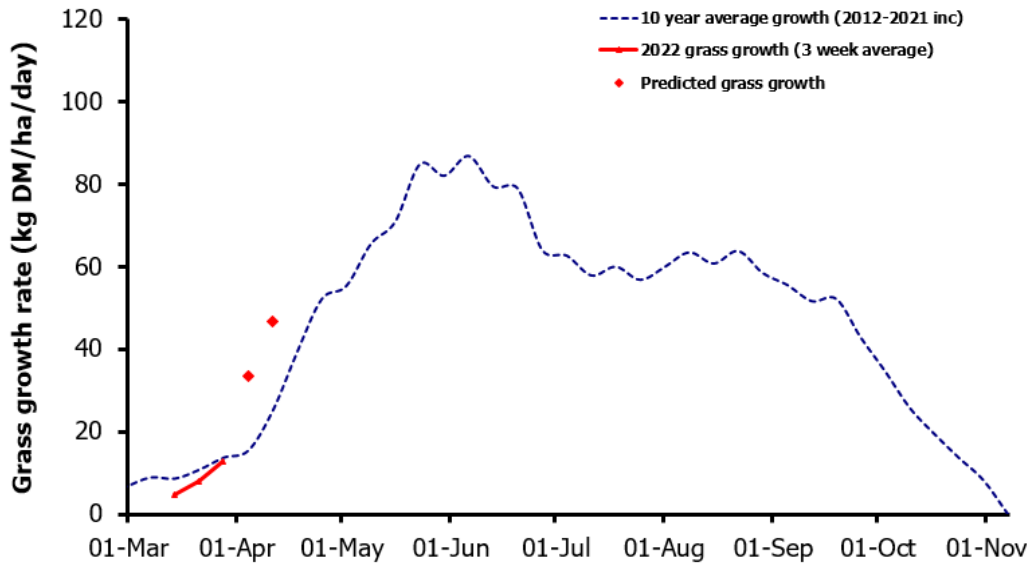
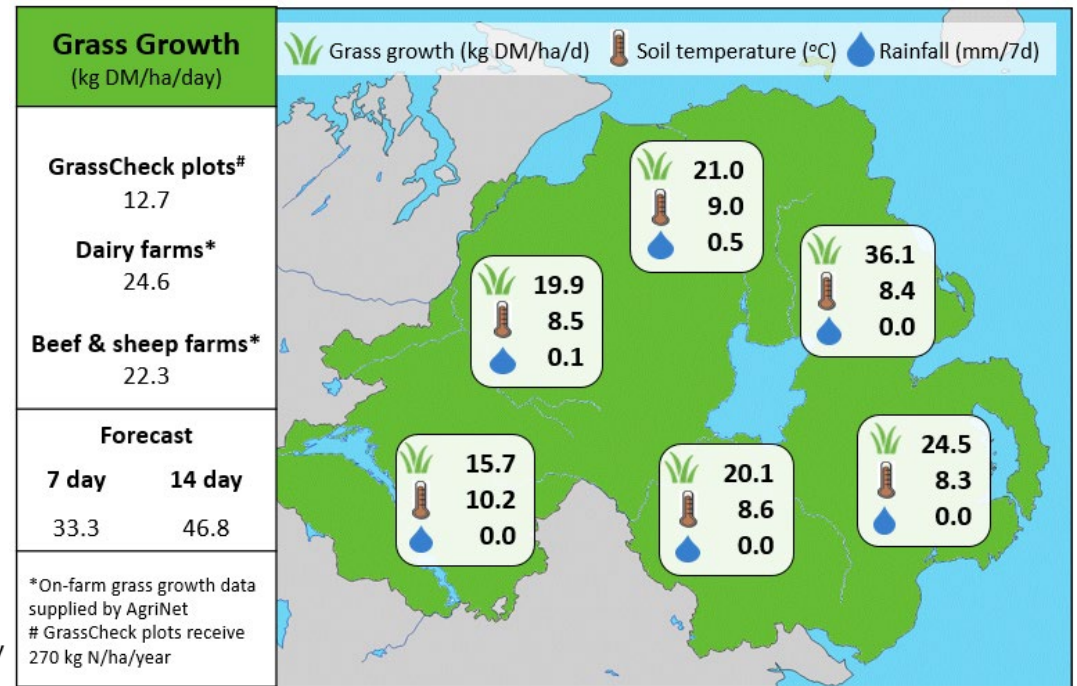


## Week Beginning 28<sup>th</sup> March 2022



### MANAGEMENT NOTES:

- Plot growth is currently 12.7 kg DM/ha/d. Forecasting models are predicting growth rates to exceed the seasonal average for the next 7 to 14 days. However, a return to unsettled conditions may reduce growth rates.
- Take advantage of current ground conditions to graze higher covers or heavier parts of the farm, particularly with lighter stock.
- Where possible, aim for post grazing residuals of 1600-1800 kg DM/ha with dairy cows and 1400-1600 kg DM/ha with other cattle/sheep to set-up swards for good quality regrowth. Walk the farm weekly to assess grass availability and regrowths.
- Follow grazed paddocks with slurry or fertiliser according to your nutrient management plan.



Value of Grass		Grass Quality	
Dairy – maintenance plus (M+) (kg/cow/day)*	19.0	DM (%)	17.7
Growing animals – daily live weight gain (kg/head/day)**	1.06	CP (% DM)	21.2
*M+ calculated assuming: 650kg cow, and 15 kg DMI. Maintenance=75 MJ/day, 5.3 MJ/kg milk **Beef daily gain assuming: 300 kg beef steer, and 6.6 kg DMI. Maintenance=35 MJ/day, 40 MJ/kg gain		WSC (% DM)	14.8
		ME (MJ/kg DM)	11.7