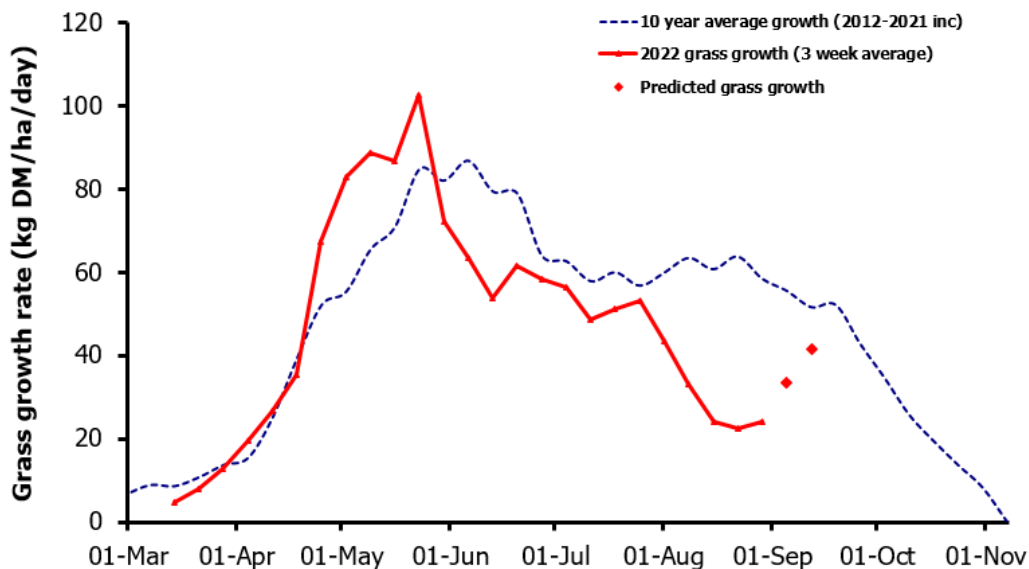
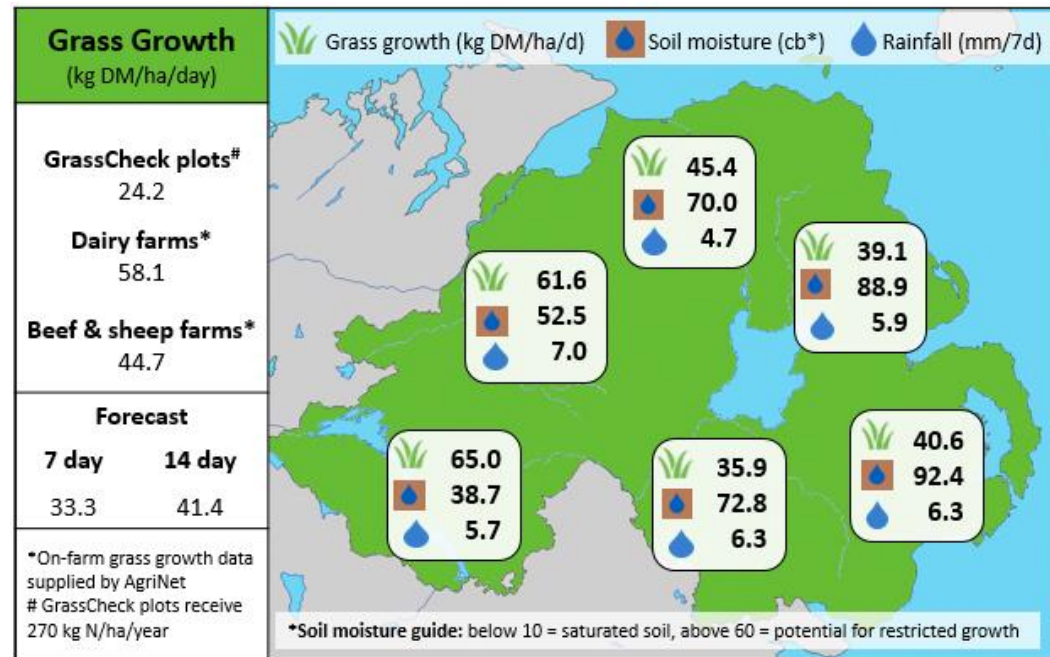


Week Beginning 29th August 2022



MANAGEMENT NOTES:

- Forecasting models are currently predicting a welcome upturn in grass growth during the next two weeks, driven by showery and mild weather.
- Continue to measure grass at least weekly. Average Farm Cover should be approx. 2,600Kg DM/ha at this stage in the season. Aim to have all poorly grazed swards cleaned out by early September to grow clean covers.
- If needs be, consider drying off low yielding cows or selling culls early to reduce demand. Complete a fodder budget to assess winter feed stocks.
- Follow grazings with fertiliser to boost growth for the rest of the season. Fertiliser sown this week will have a greater response than in mid-September
- Although conditions are good, it is getting late in the season for reseeding.



	Value of Grass	Grass Quality	
Dairy – maintenance plus (M+) (kg/cow/day)*	13.9	DM (%)	17.6
Growing animals – daily live weight gain (kg/head/day)**	0.94	CP (% DM)	19.9
*M+ calculated assuming: 650kg cow, and 13.5 kg DMI. Maintenance=75 MJ/day, 5.3 MJ/kg milk		WSC (% DM)	9.7
**Beef daily gain assuming: 300 kg beef steer, and 6.6 kg DMI. Maintenance=35 MJ/day, 40 MJ/kg gain		ME (MJ/kg DM)	11.0