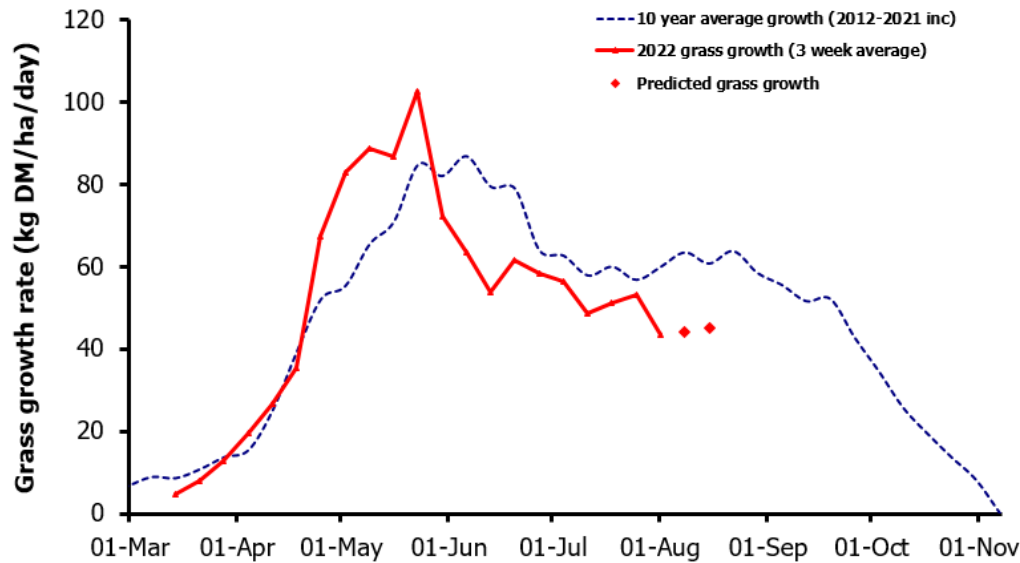
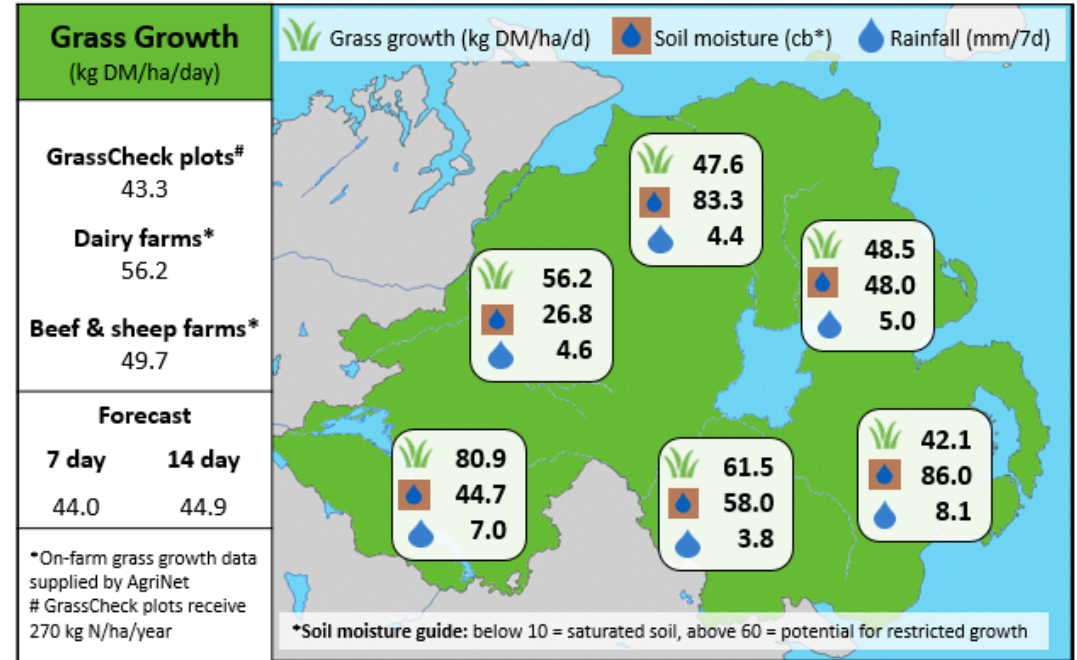


Week Beginning 1st August 2022



MANAGEMENT NOTES:

- Grass growth is set to remain below the LT av., with significant variation in grass growth across the province due to the range in soil moisture contents.
- Total av. grass growth across NI until the end of July was 96% of the LT av.
- Continue to measure grass weekly, to allow supplementary feed to be allocated correctly and keep the AFC above the 2,050 kg DM/ha minimum.
- If silage is being fed as a supplementary feed, assess stocking levels & feed demand and carry out a fodder budget for the autumn and winter ahead.
- Swards sprayed off for autumn reseeds now will be out of production for 60 days if all goes to plan. Plan grazing demand according to the remaining area available. Establishing clover is more difficult now than in the spring.



	Value of Grass	Grass Quality	
Dairy – maintenance plus (M+) (kg/cow/day)*	14.6	DM (%)	18.1
Growing animals – daily live weight gain (kg/head/day)**	0.99	CP (% DM)	16.5
*M+ calculated assuming: 650kg cow, and 13.5 kg DMI. Maintenance=75 MJ/day, 5.3 MJ/kg milk **Beef daily gain assuming: 300 kg beef steer, and 6.6 kg DMI. Maintenance=35 MJ/day, 40 MJ/kg gain		WSC (% DM)	13.4
		ME (MJ/kg DM)	11.3