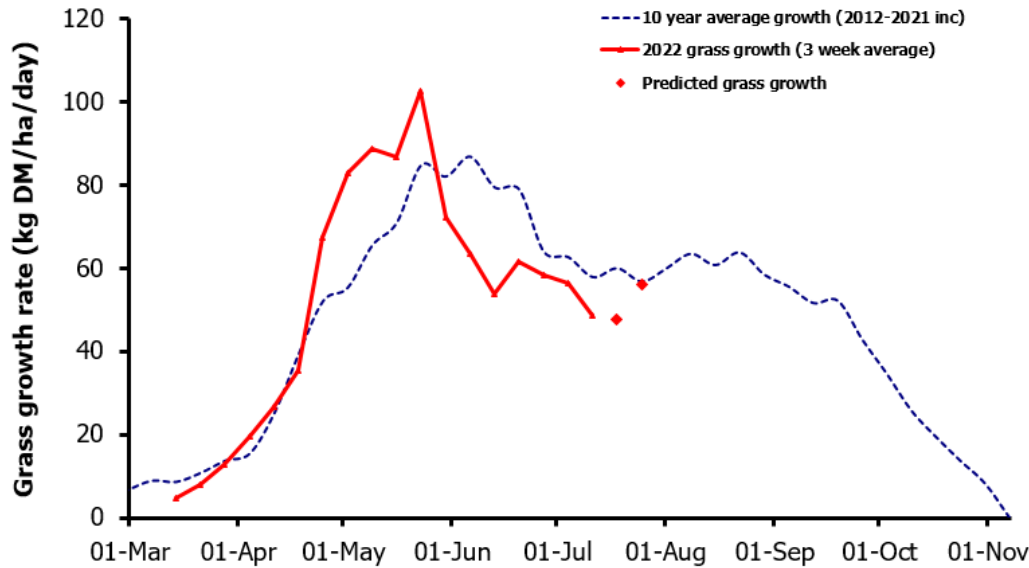
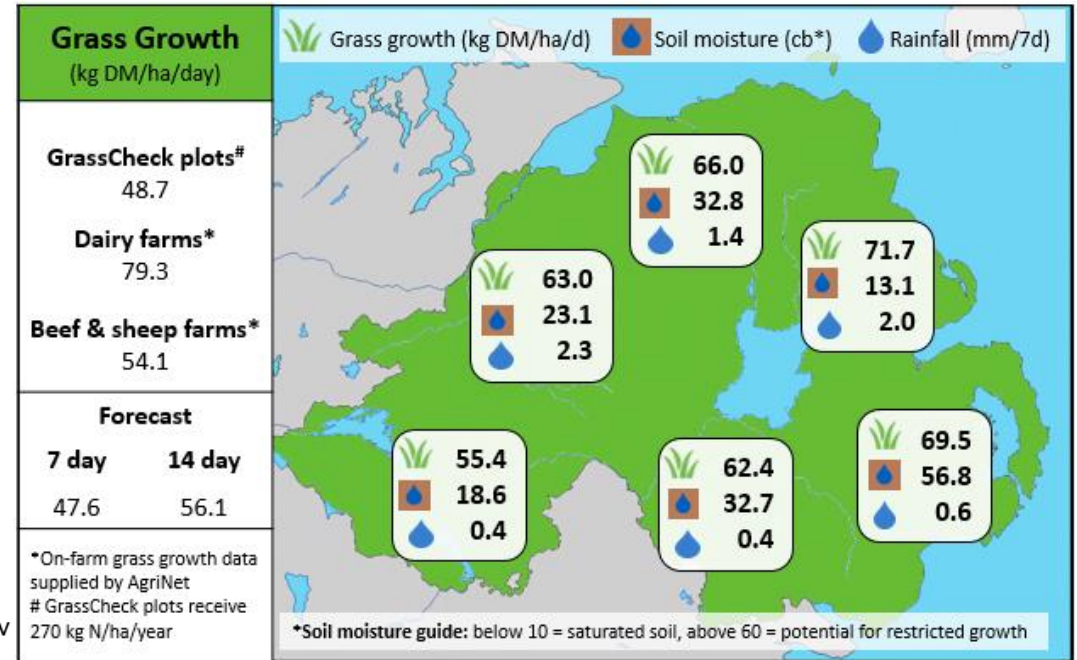


## Week Beginning 11<sup>th</sup> July 2022



### MANAGEMENT NOTES:

- Grasscheck plot growth is 9 kg DM/ha/day below the LT av. this week and is forecast to remain below the LT av. for the incoming fortnight.
- The spell of settled weather should provide favourable grazing conditions.
- Match grass growth with demand and increase supplementation if the av. farm cover is in danger of falling below the critical level of 2,000 kg DM/ha.
- Grass quality will be an issue on many farms at this stage of the season, especially in paddocks that have been grazed throughout. Make efforts to address this where applicable but note pre mowing and topping can reduce growth. If a surplus exists, prioritise removing the poorer quality paddocks.
- If autumn reseeds are to be carried out, plans should be put in place now.



Value of Grass		Grass Quality	
Dairy – maintenance plus (M+) (kg/cow/day)*	18.1	DM (%)	19.7
Growing animals – daily live weight gain (kg/head/day)**	1.01	CP (% DM)	15.5
*M+ calculated assuming: 650kg cow, and 15 kg DMI. Maintenance=75 MJ/day, 5.3 MJ/kg milk **Beef daily gain assuming: 300 kg beef steer, and 6.6 kg DMI. Maintenance=35 MJ/day, 40 MJ/kg gain		WSC (% DM)	16.7
		ME (MJ/kg DM)	11.4