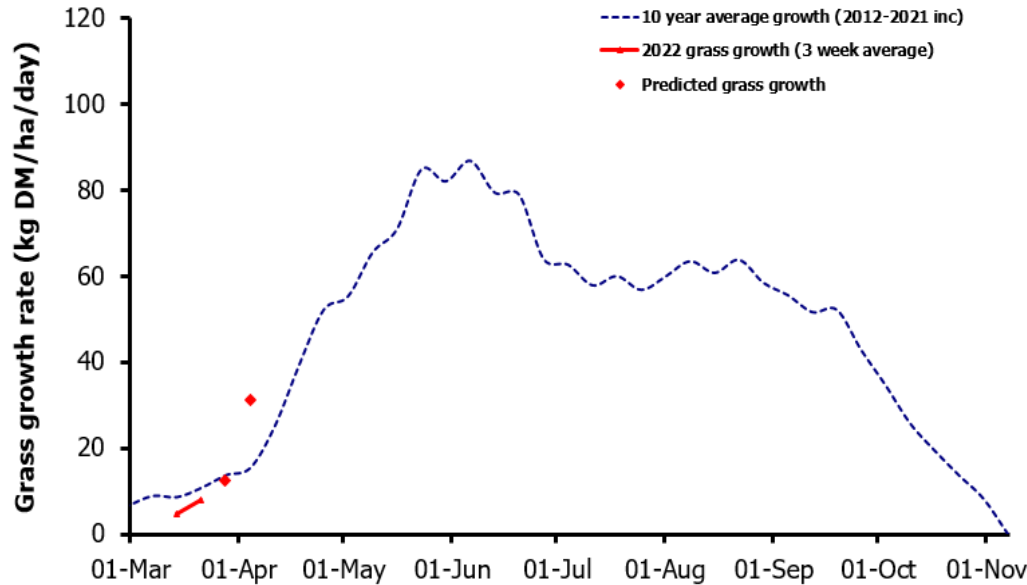
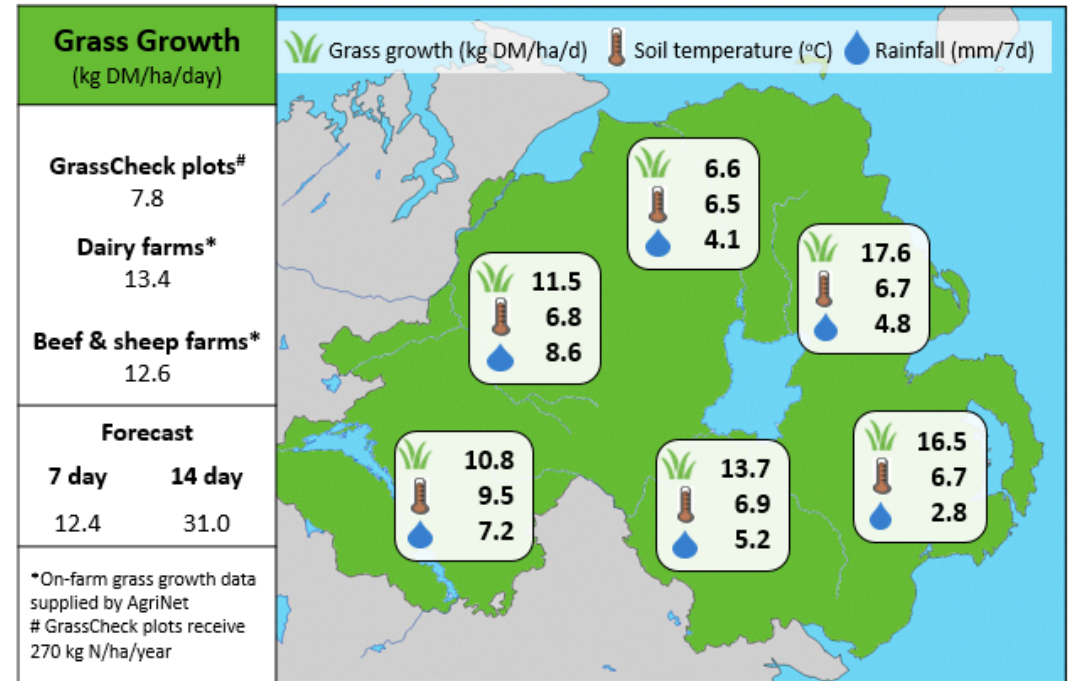


Week Beginning 21st March 2022



MANAGEMENT NOTES:

- After an unsettled start to the month, the current conditions look set to continue into next week. Soil temperatures are currently averaging 7.2 °C, with a grass growth of 12.4 kg DM/ha forecast for next week.
- Capitalise on the settled spell and get livestock out to grass, maximising the amount of grazed grass in the diet whilst conserving silage supplies.
- Measure grass on a weekly basis from now on. Physically walking the farm will allow you to assess soil conditions and identify other jobs.
- A nutrient management plan should be in place for the incoming season. Following grazing with a 'little and often' approach to Nitrogen applications will help increase the efficiency of the expensive resource.



Value of Grass		Grass Quality	
Dairy – maintenance plus (M+) (kg/cow/day)*	18.4	DM (%)	18.3
Growing animals – daily live weight gain (kg/head/day)**	1.02	CP (% DM)	23.9
*M+ calculated assuming: 650kg cow, and 15 kg DMI. Maintenance=75 MJ/day, 5.3 MJ/kg milk **Beef daily gain assuming: 300 kg beef steer, and 6.6 kg DMI. Maintenance=35 MJ/day, 40 MJ/kg gain		WSC (% DM)	11.6
		ME (MJ/kg DM)	11.5