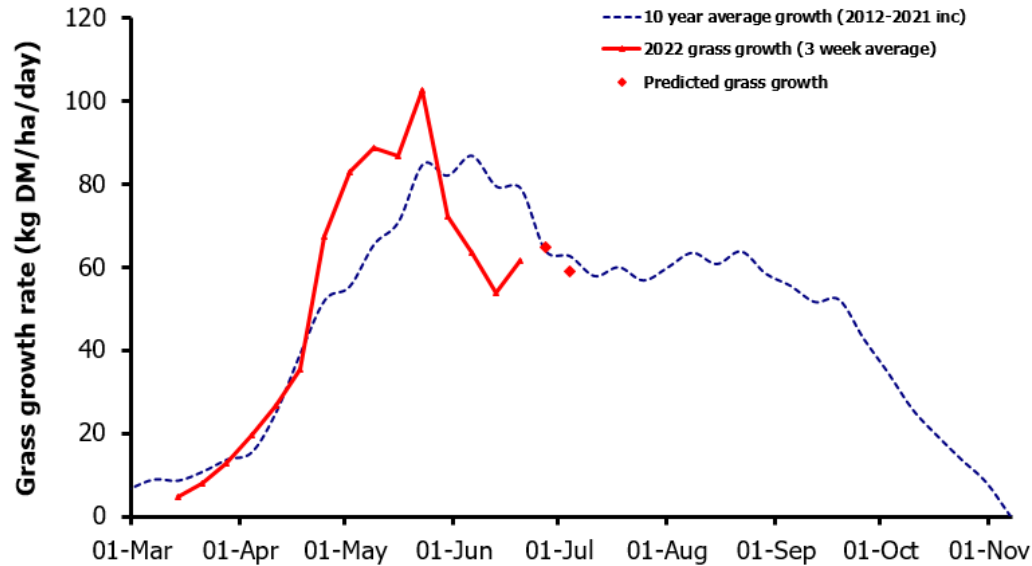
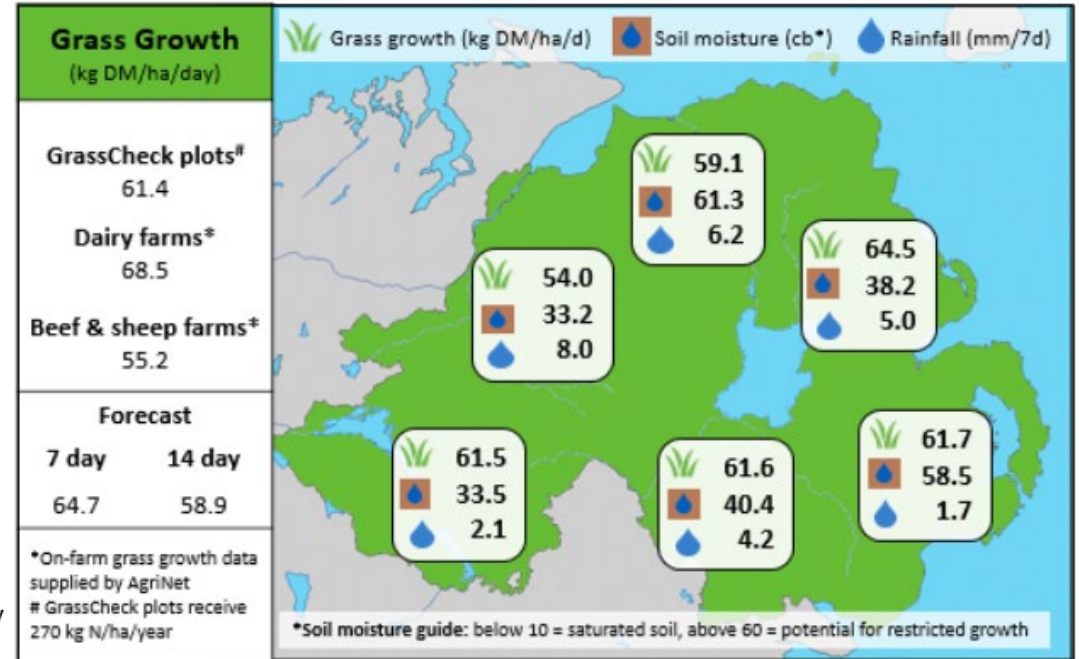


Week Beginning 20th June 2022



MANAGEMENT NOTES:

- Forecasting models are currently predicting a welcome recovery to growth rates, in line with the long term average, during the next two weeks.
- Continue to walk the farm at least weekly to enable early identification of a deficit or surplus in the grass wedge. If growth is below demand, increase supplementation or introduce silage aftermath to the grazing platform to maintain a 21-day rotation.
- The previously high growth rates followed by a dry spell has resulted in a lot of paddocks going stemmy, even at low covers. Mature grass should be removed by pre-mowing or baling to improve grass quality for subsequent rotations. A light dressing of N will also help to maintain regrowth quality.



	Value of Grass	Grass Quality	
Dairy – maintenance plus (M+) (kg/cow/day)*	16.7	DM (%)	17.2
Growing animals – daily live weight gain (kg/head/day)**	0.92	CP (% DM)	18.3
*M+ calculated assuming: 650kg cow, and 15 kg DMI. Maintenance=75 MJ/day, 5.3 MJ/kg milk **Beef daily gain assuming: 300 kg beef steer, and 6.6 kg DMI. Maintenance=35 MJ/day, 40 MJ/kg gain		WSC (% DM)	13.3
		ME (MJ/kg DM)	10.9