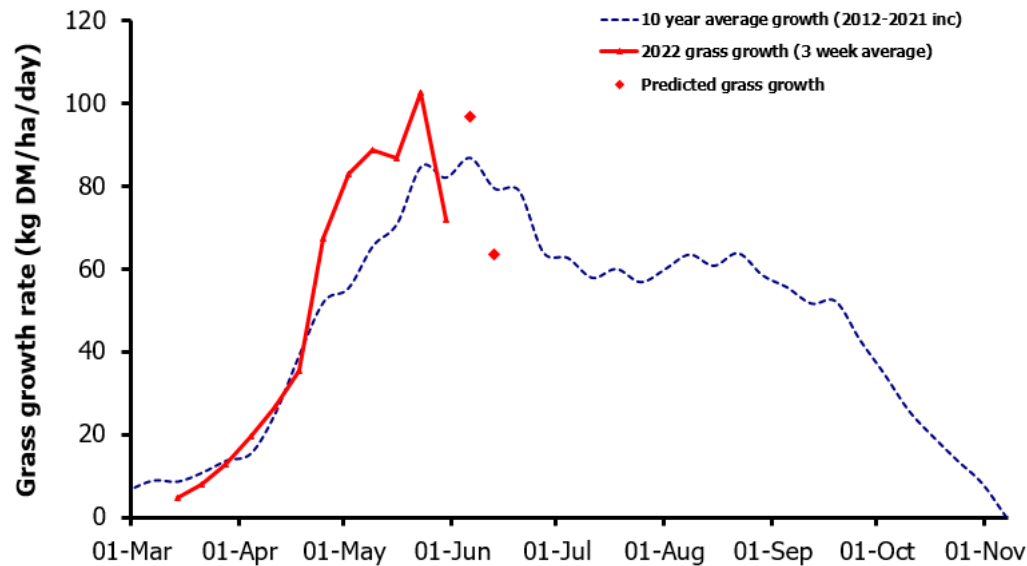
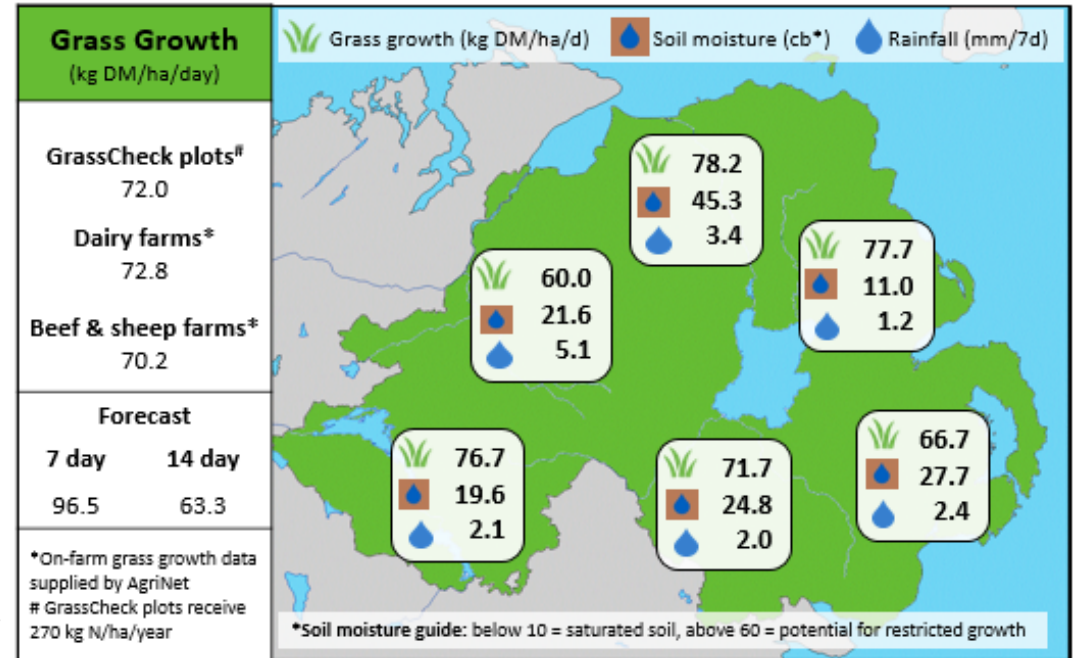


Week Beginning 30th May 2022



MANAGEMENT NOTES:

- Grass growth in the week past has been notably below the prediction due to variations in weather patterns. The grass growth forecast for the next 7 days remains high, with warmer conditions forecast over the weekend.
- Target a pre grazing cover of 2,900 kg DM/ha. Perennial rye grass covers above 2,900 kg DM/ha will contain true stem as they head out and produce seed heads, which will be detrimental to milk production and liveweight gain.
- Measure grass growth regularly to match demand with growth and shorten the rotation length when required, to achieve target pre grazing covers.
- The weather has made silage making a difficult task. First cut silage quality will be reduced for many, therefore second cut quality should be prioritised.



Value of Grass		Grass Quality	
Dairy – maintenance plus (M+) (kg/cow/day)*	18.2	DM (%)	15.5
Growing animals – daily live weight gain (kg/head/day)**	0.89	CP (% DM)	16.6
*M+ calculated assuming: 650kg cow, and 16 kg DMI. Maintenance=75 MJ/day, 5.3 MJ/kg milk **Beef daily gain assuming: 300 kg beef steer, and 6.6 kg DMI. Maintenance=35 MJ/day, 40 MJ/kg gain		WSC (% DM)	13.1
		ME (MJ/kg DM)	10.7