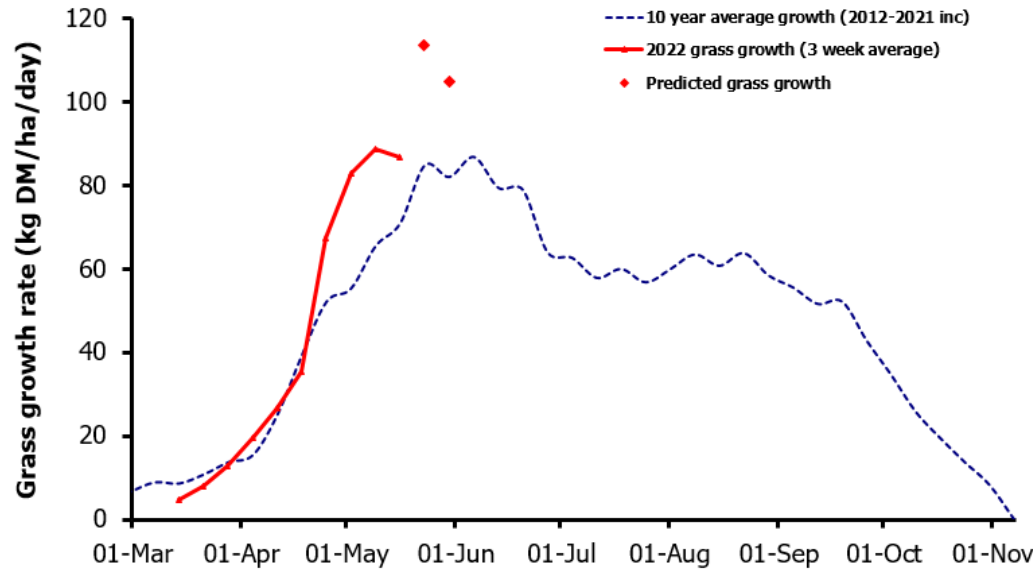
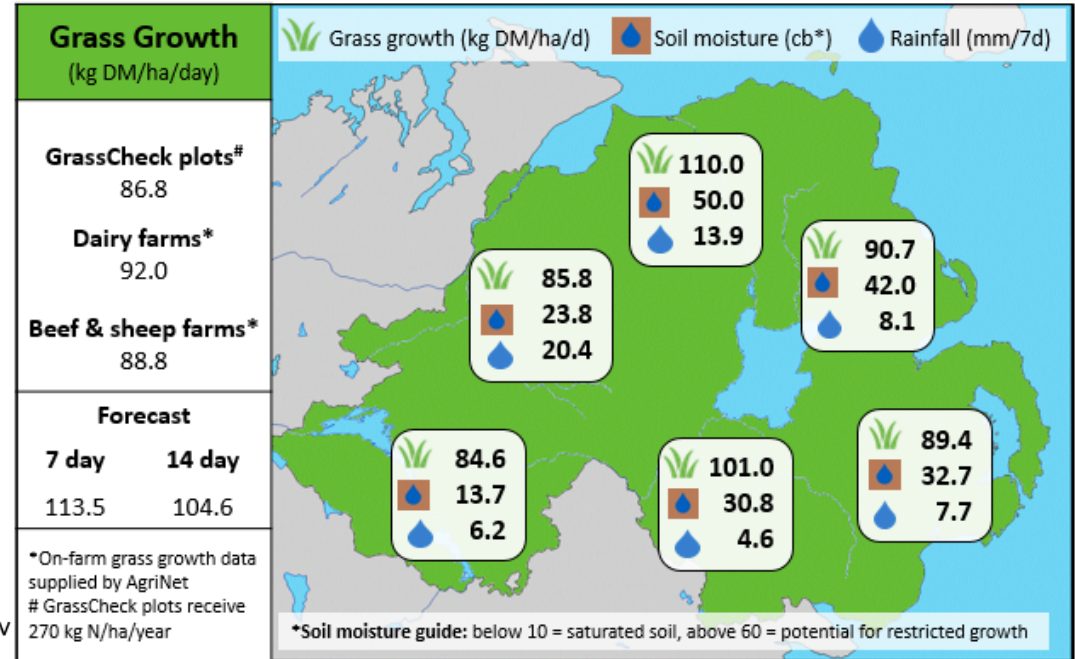


Week Beginning 16th May 2022



MANAGEMENT NOTES:

- Favourable weather conditions are continuing to drive grass growth. Forecasting models are currently predicting growth to significantly exceed the long-term average during the next two weeks.
- If possible, measure grass covers every 5 days during this peak growth period. Don't try to achieve target residuals by holding stock an extra day in strong paddocks, as this will reduce performance. Take out heavy covers as silage or follow with lower priority stock, such as dry cows, to clean out.
- Unsettled weather is currently limiting silage making opportunities but make every effort to cut silage before heading occurs. The D-value of silage will reduce by 1% every 2 to 3 days once seed heads appear in the crop.



Value of Grass		Grass Quality	
Dairy – maintenance plus (M+) (kg/cow/day)*	17.5	DM (%)	14.0
Growing animals – daily live weight gain (kg/head/day)**	0.86	CP (% DM)	18.4
*M+ calculated assuming: 650kg cow, and 16 kg DMI. Maintenance=75 MJ/day, 5.3 MJ/kg milk **Beef daily gain assuming: 300 kg beef steer, and 6.6 kg DMI. Maintenance=35 MJ/day, 40 MJ/kg gain		WSC (% DM)	9.2
		ME (MJ/kg DM)	10.5