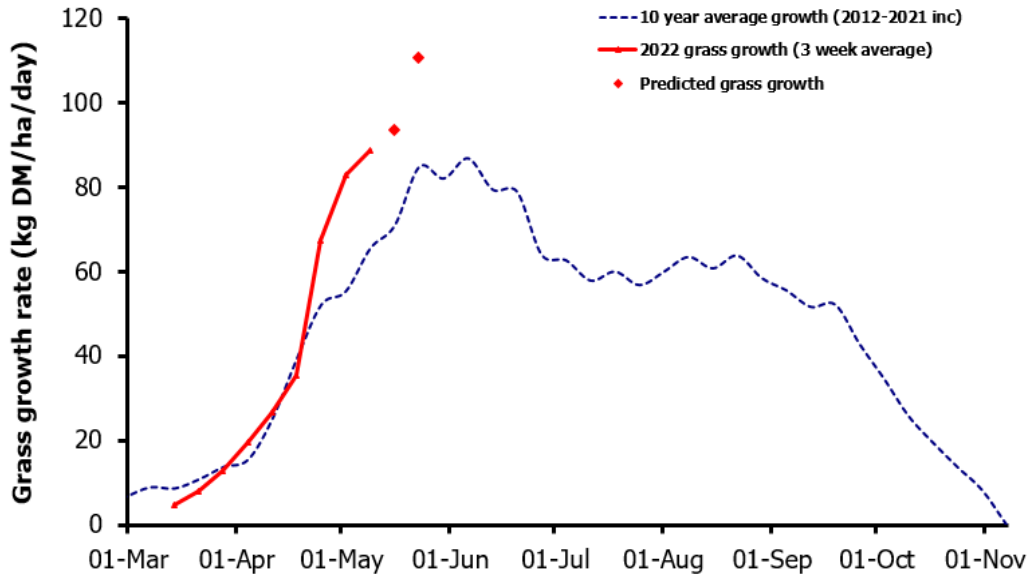
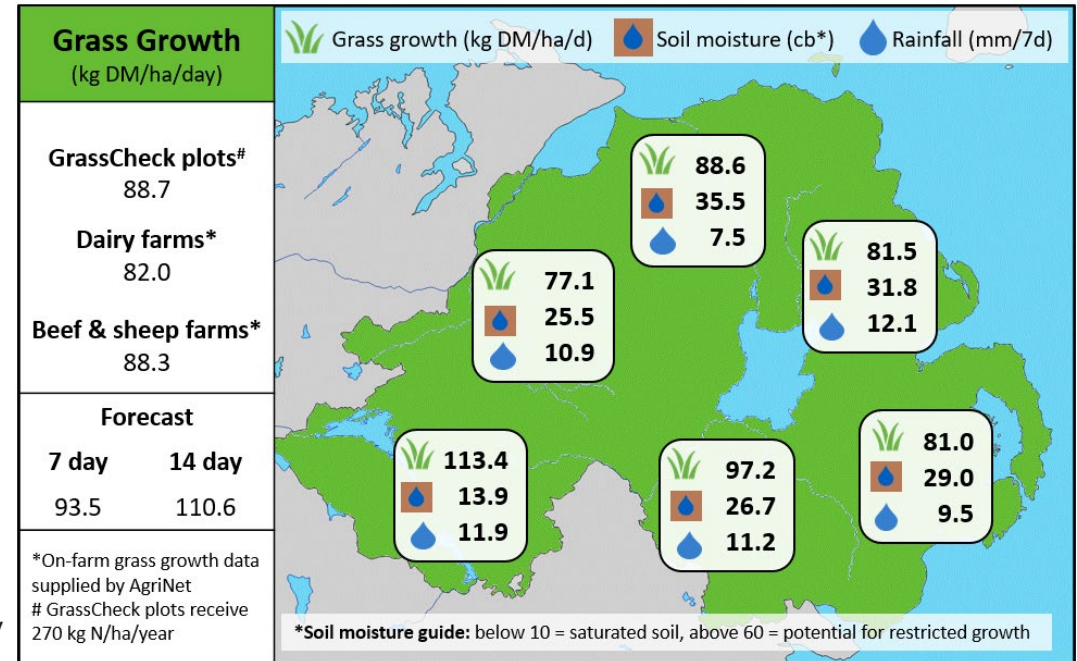


## Week Beginning 9<sup>th</sup> May 2022



### MANAGEMENT NOTES:

- Sunshine and showers are providing optimum growing conditions at present. Forecasting models are currently predicting a surge in growth during the next 7 to 14 days, driven by soil moisture levels and higher forecasted temperatures.
- Continue to measure grass at least weekly to identify any accumulating surplus which could be taken out for silage. Mowing and baling surplus paddocks will also provide high quality regrowth and is a much better option to correct sward quality than topping later in the season.
- Harvesting first cut silage could provide additional grazing options, with high quality regrowth, in the coming weeks.



Value of Grass		Grass Quality	
Dairy – maintenance plus (M+) (kg/cow/day)*	19.7	DM (%)	18.2
Growing animals – daily live weight gain (kg/head/day)**	0.97	CP (% DM)	16.5
*M+ calculated assuming: 650kg cow, and 15 kg DMI. Maintenance=75 MJ/day, 5.3 MJ/kg milk **Beef daily gain assuming: 300 kg beef steer, and 6.6 kg DMI. Maintenance=35 MJ/day, 40 MJ/kg gain		WSC (% DM)	15.8
		ME (MJ/kg DM)	11.2