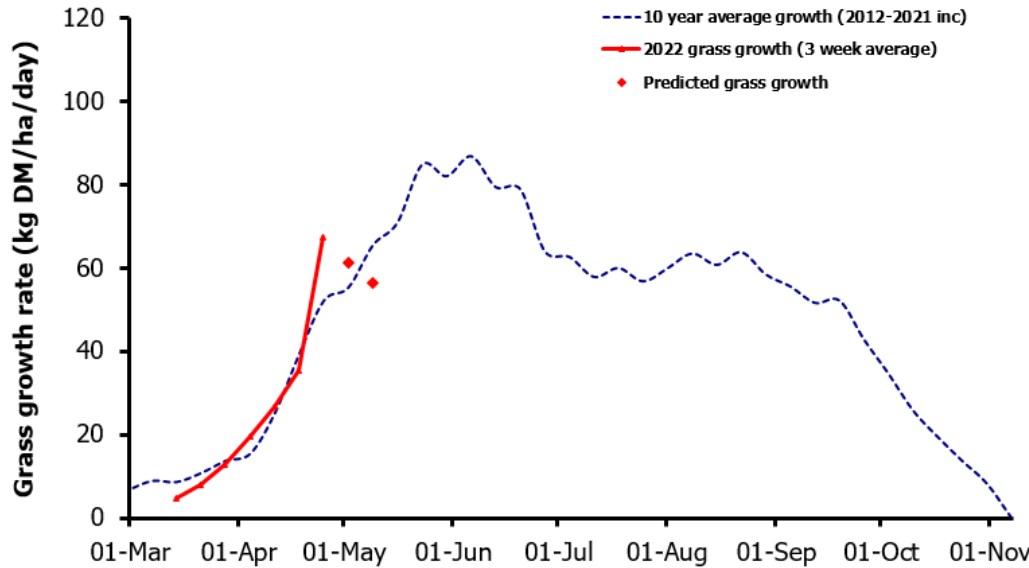
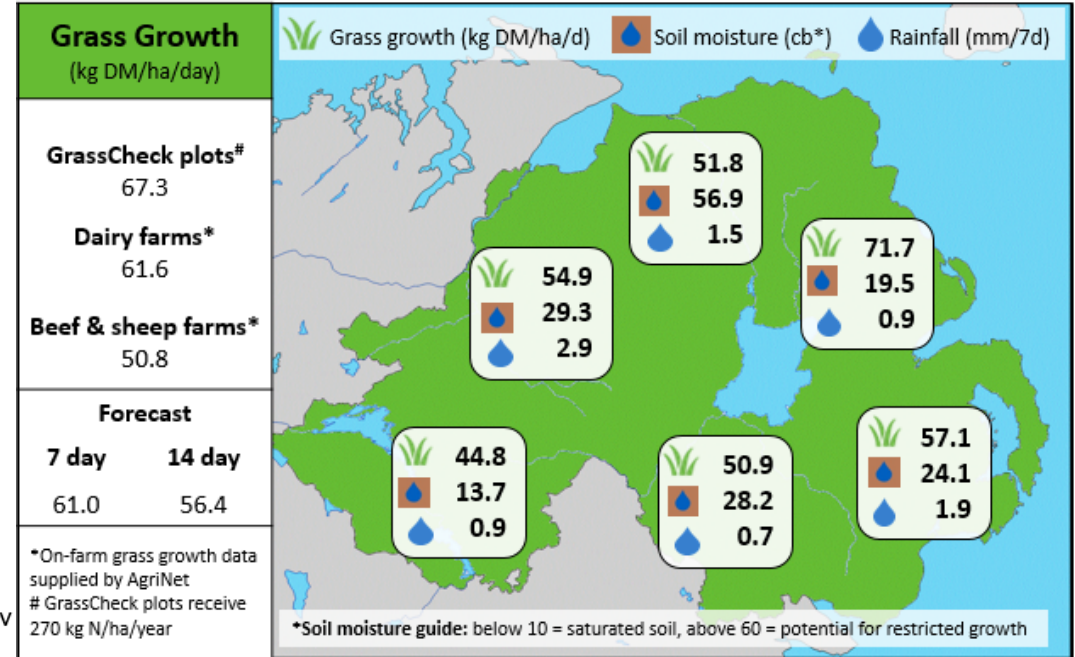


Week Beginning 25th April 2022



MANAGEMENT NOTES:

- Growth rates on GrassCheck plots increased significantly over the past week to 67.3 kg DM/ha/day. However, forecasting models are currently predicting a check in growth over the next two weeks due to a lack of rain. Soil moisture figures are now displayed on the map rather than temperature.
- Now that grass growth has picked up, measure growth at least weekly to identify high covers to prioritise for grazing or taking out for silage.
- Take every opportunity to achieve target residuals with the dry weather providing ideal conditions to clean out swards and maintain grass quality.
- With silage season approaching, it's time to clean silos and carry out any essential maintenance.



Value of Grass		Grass Quality	
Dairy – maintenance plus (M+) (kg/cow/day)*	19.7	DM (%)	17.7
Growing animals – daily live weight gain (kg/head/day)**	0.97	CP (% DM)	20.1
*M+ calculated assuming: 650kg cow, and 15 kg DMI. Maintenance=75 MJ/day, 5.3 MJ/kg milk **Beef daily gain assuming: 300 kg beef steer, and 6.6 kg DMI. Maintenance=35 MJ/day, 40 MJ/kg gain		WSC (% DM)	12.7
		ME (MJ/kg DM)	11.2