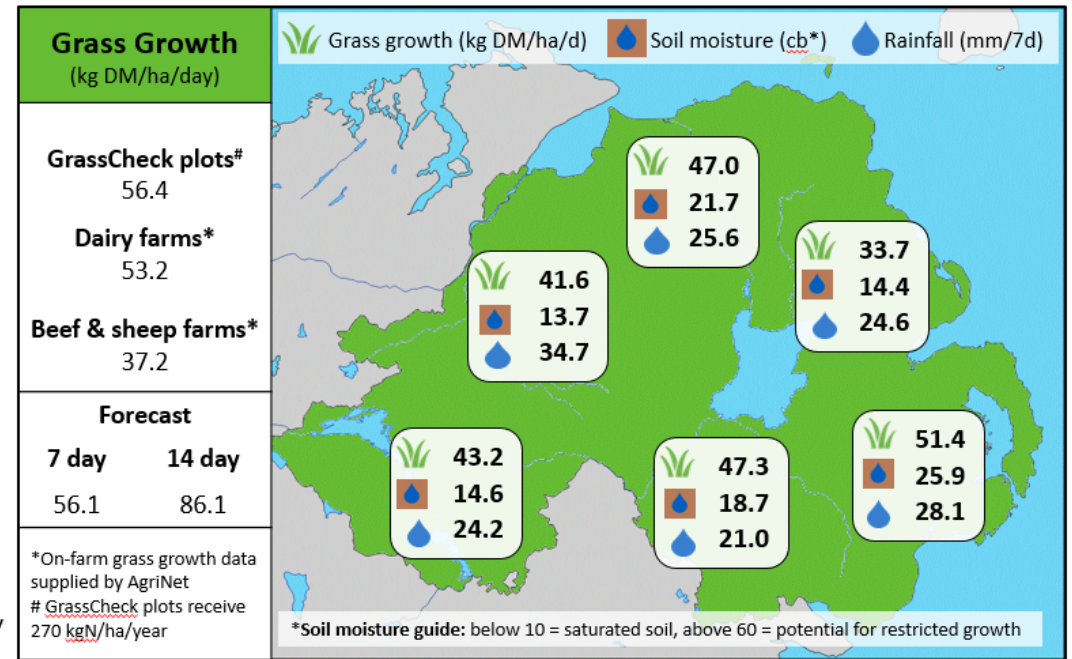
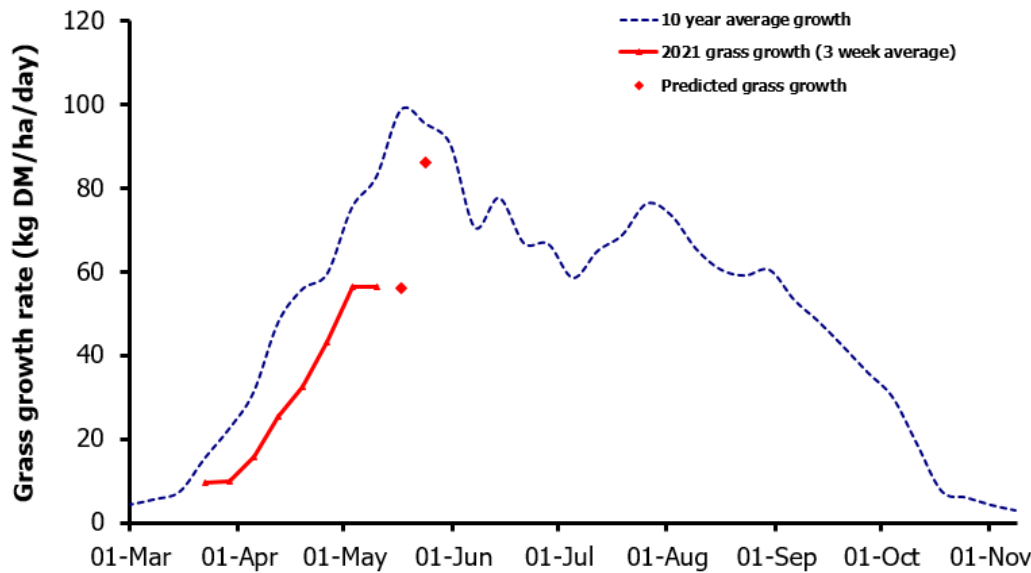


Week Beginning 10th May 2021



MANAGEMENT NOTES:

- The recent rainfall and modest increase in temperature has not yet produced a significant response in grass growth. However, growth forecasting models are predicting a jump to 86kgDM/ha/day in two weeks' time. Continue with silage or concentrate supplementation, if required, for the time being. Measure grass growth at least weekly and be prepared, there will be compensatory growth when conditions improve.
- It is important to adhere to the grazing plan to maintain the grass wedge. Try to maintain a 21-day rotation and achieve a target residual of 1600-1800kgDM/ha to ensure high quality grass in the next rotation.
- Harvesting first-cut silage could provide some additional grazing ground,

Value of Grass		Grass Quality	
Dairy – maintenance plus (M+) (kg/cow/day)*	22.1	DM (%)	19.8
Growing animals – daily live weight gain (kg/head/day)**	1.11	CP (% DM)	14.4
*M+ calculated assuming: 650kg cow, and 16 kg DMI. Maintenance=75 MJ/day, 5.3 MJ/kg milk **Beef daily gain assuming: 300 kg beef steer, and 6.6 kg DMI. Maintenance=35 MJ/day, 40 MJ/kg gain		WSC (% DM)	18.9
		ME (MJ/kg DM)	12.0