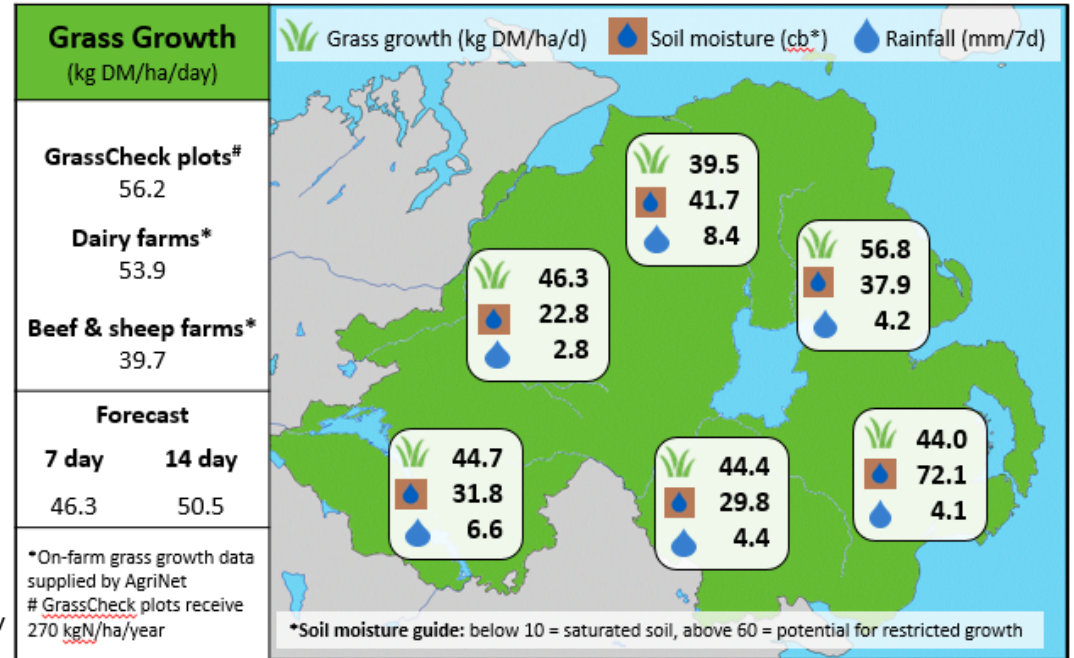
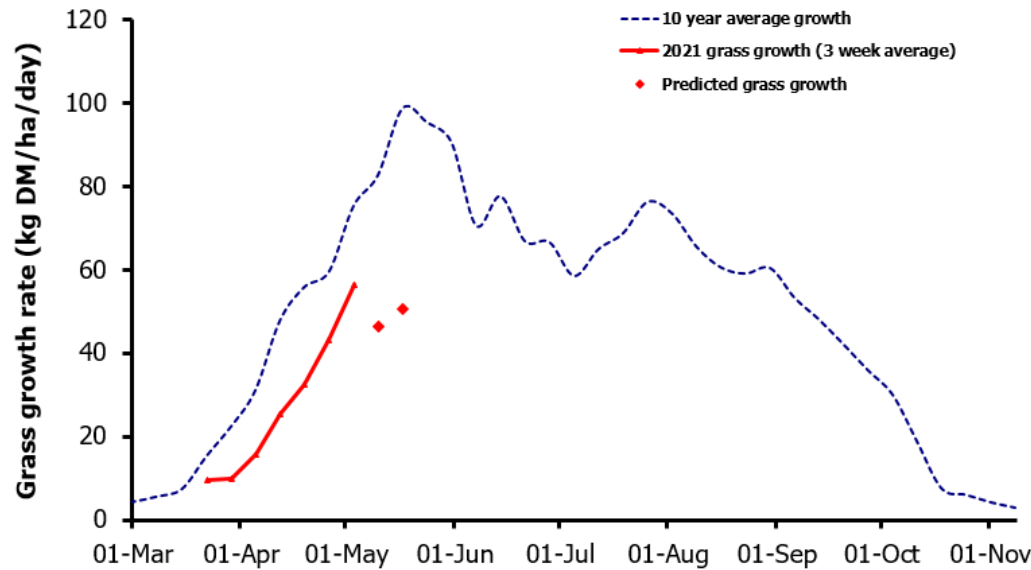


Week Beginning 3rd May 2021



MANAGEMENT NOTES:

- Grass growth during March and April was restricted by the poor spring weather, with total yields so far this year only 55% of the 10 year average.
- Growth is forecast to remain below the long term average over the incoming week due to the impact of cold temperatures, with temperatures forecast to remain in single figures until 14th May.
- Continue to focus on grazing residuals where conditions allow, as this will help to maintain quality grass for grazing when grass growth finally jumps.
- After slow April growth and a prolonged dry spell prior to the recent rain, be mindful of any potential excess nitrate present in swards when planning first-cut silage. High nitrates at cutting cause poor fermentation, and lower silage quality and palatability.

Value of Grass		Grass Quality	
Dairy – maintenance plus (M+) (kg/cow/day)*	23.0	DM (%)	22.1
Growing animals – daily live weight gain (kg/head/day)**	1.15	CP (% DM)	15.9
*M+ calculated assuming: 650kg cow, and 16 kg DMI. Maintenance=75 MJ/day, 5.3 MJ/kg milk **Beef daily gain assuming: 300 kg beef steer, and 6.6 kg DMI. Maintenance=35 MJ/day, 40 MJ/kg gain		WSC (% DM)	19.1
		ME (MJ/kg DM)	12.3