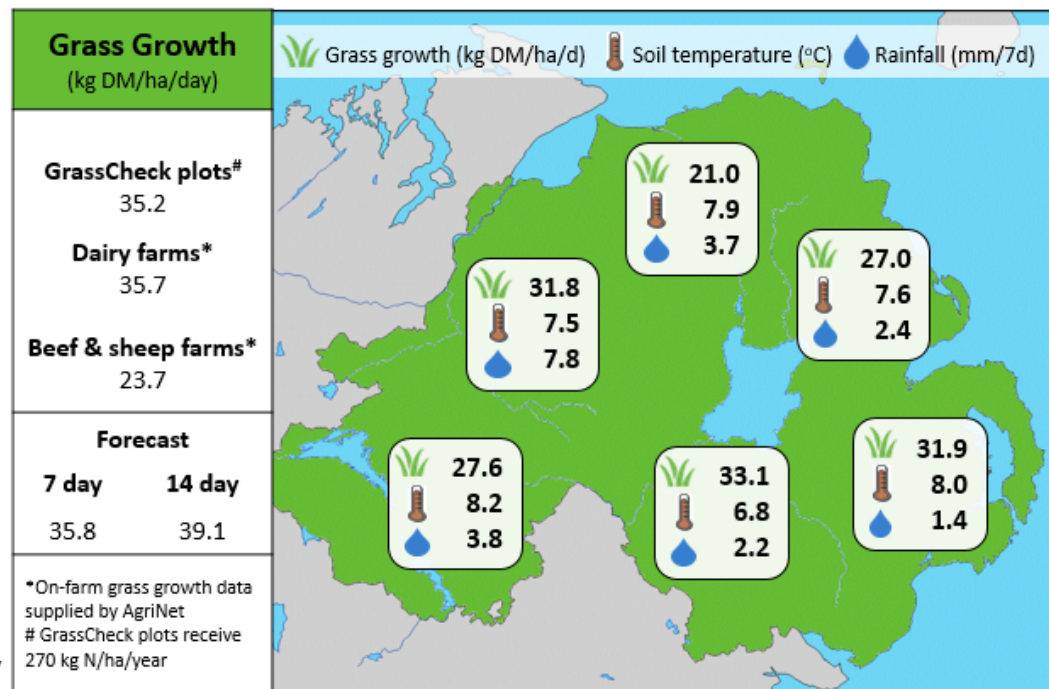
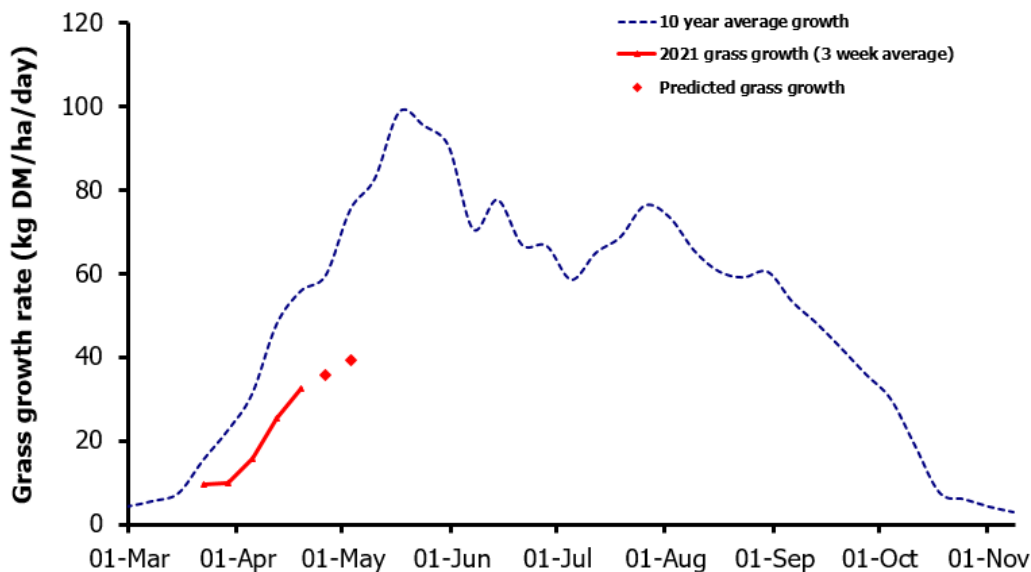


## Week Beginning 19<sup>th</sup> April 2021



### MANAGEMENT NOTES:

- Grass growth rates continue to lag well below the 10 year average. With little rainfall recorded in the past seven days and very little predicted for the incoming week, a soil moisture deficit could be seen in eastern areas.
- The lower temperatures coupled with lower soil moisture levels mean growth rates will continue to be restricted. It is very important for average farm cover to not fall below 2100Kg DM/ha or reduce rotation length.
- Consider increasing the grazing area available to reduce demand per ha, or reduce demand by increasing silage or concentrate inclusion in the diet.
- The drier conditions do provide a good opportunity to achieve target residuals, especially on paddocks grazed in wet and unfavourable conditions in the first rotation, to maximise pasture quality going forward.

Value of Grass		Grass Quality	
Dairy – maintenance plus (M+) (kg/cow/day)*	22.4	DM (%)	20.9
Growing animals – daily live weight gain (kg/head/day)**	1.12	CP (% DM)	19.0
*M+ calculated assuming: 650kg cow, and 16 kg DMI. Maintenance=75 MJ/day, 5.3 MJ/kg milk		WSC (% DM)	15.8
**Beef daily gain assuming: 300 kg beef steer, and 6.6 kg DMI. Maintenance=35 MJ/day, 40 MJ/kg gain		ME (MJ/kg DM)	12.1