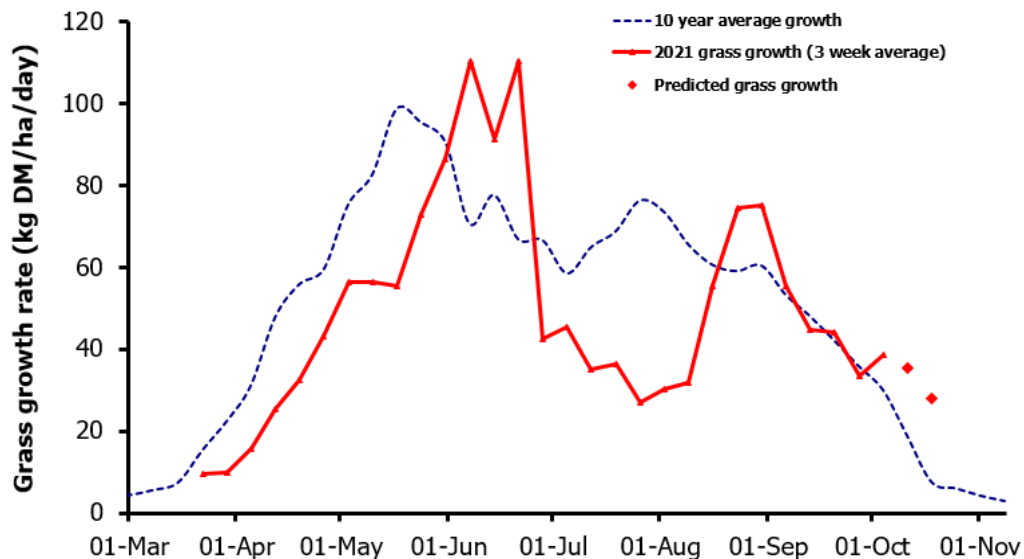
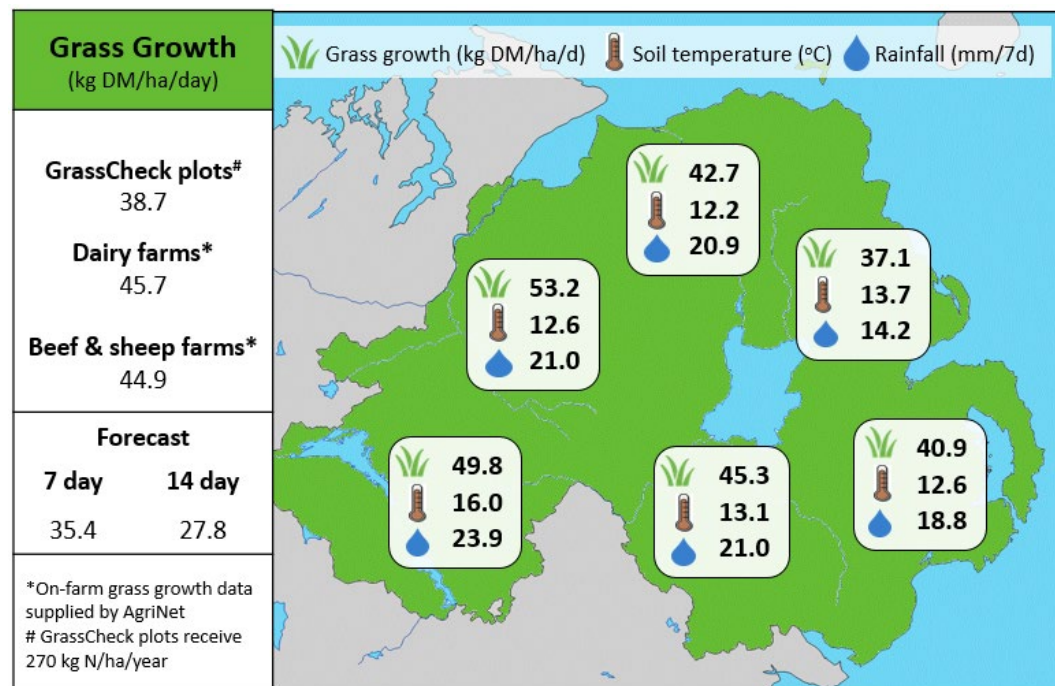


Week Beginning 4th October 2021



MANAGEMENT NOTES:

- Plot growth this week is 8.9 Kg DM/ha above the long-term average. This trend is currently predicted to continue for the next two weeks.
- It is very important to achieve target residuals during the final round of grazing to ensure quality grass for spring turnout. Try to avoid grazing heavy covers during wet weather.
- Aim to graze drier fields first during the last round as the first paddocks closed will have the heaviest covers next spring.
- The deadline for spreading slurry is 15th October. Take advantage of the current ground conditions to ensure that slurry tanks are emptied.



Value of Grass		Grass Quality	
Dairy – maintenance plus (M+) (kg/cow/day)*	8.0	DM (%)	13.6
Growing animals – daily live weight gain (kg/head/day)**	0.97	CP (% DM)	21.0
*M+ calculated assuming: 650kg cow, and 10.5 kg DMI. Maintenance=75 MJ/day, 5.3 MJ/kg milk		WSC (% DM)	10.1
**Beef daily gain assuming: 300 kg beef steer, and 6.6 kg DMI. Maintenance=35 MJ/day, 40 MJ/kg gain		ME (MJ/kg DM)	11.2