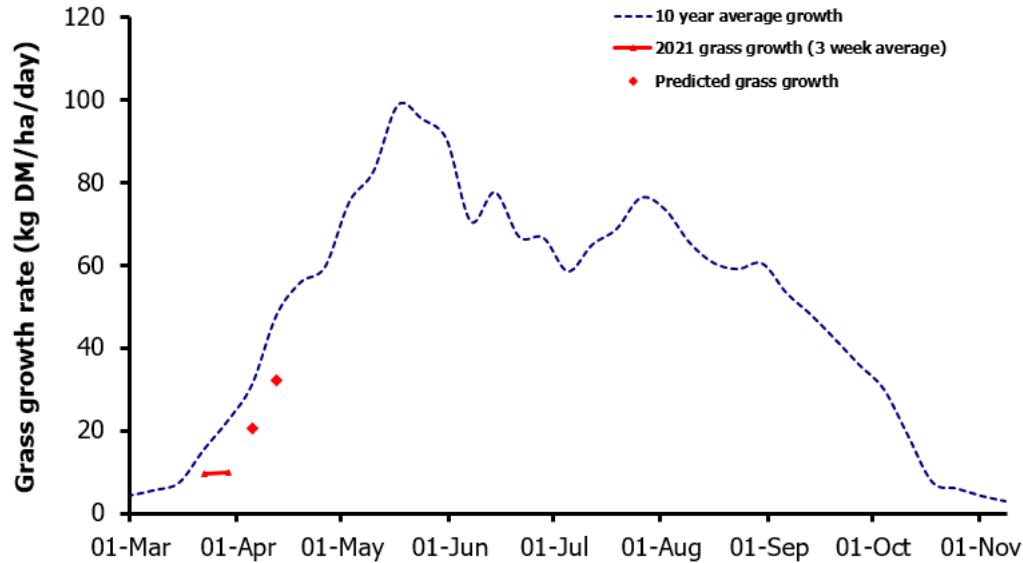
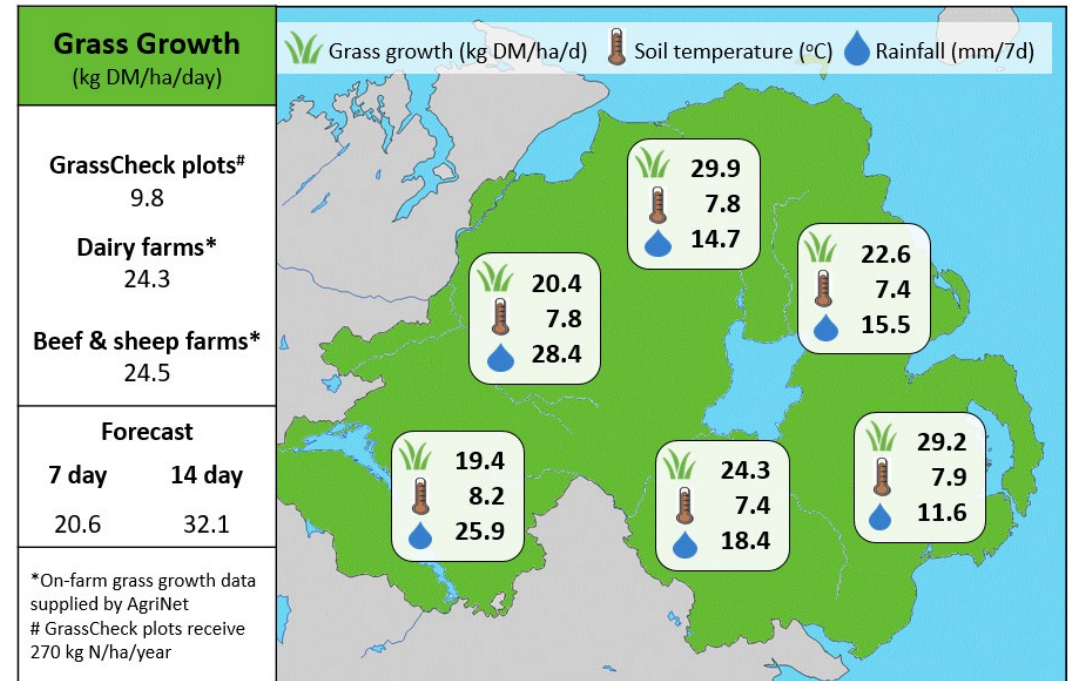


Week Beginning 29th March 2021



MANAGEMENT NOTES:

- A return to cooler conditions towards the end of this week is likely to keep growth rates below average for the time of year. Soil temperatures are currently averaging 7.8 °C and plot growth is 9.8 kg DM/ha/d. Walk the farm weekly to assess growth rates.
- Conditions are expected to remain relatively dry for the next 7 days, which may provide an opportunity to graze higher covers or heavier parts of the farm, particularly with lighter stock.
- With improved ground conditions for grazing, where possible, target your post grazing residuals to set-up swards for good quality regrowth aiming for 1600-1800 kg DM/ha with dairy cows and 1400-1600 kg DM/ha with other cattle/sheep.



Value of Grass		Grass Quality	
Dairy – maintenance plus (M+) (kg/cow/day)*	20.4	DM (%)	19.4
Growing animals – daily live weight gain (kg/head/day)**	1.14	CP (% DM)	22.0
*M+ calculated assuming: 650kg cow, and 15 kg DMI. Maintenance=75 MJ/day, 5.3 MJ/kg milk		WSC (% DM)	12.9
**Beef daily gain assuming: 300 kg beef steer, and 6.6 kg DMI. Maintenance=35 MJ/day, 40 MJ/kg gain		ME (MJ/kg DM)	12.2