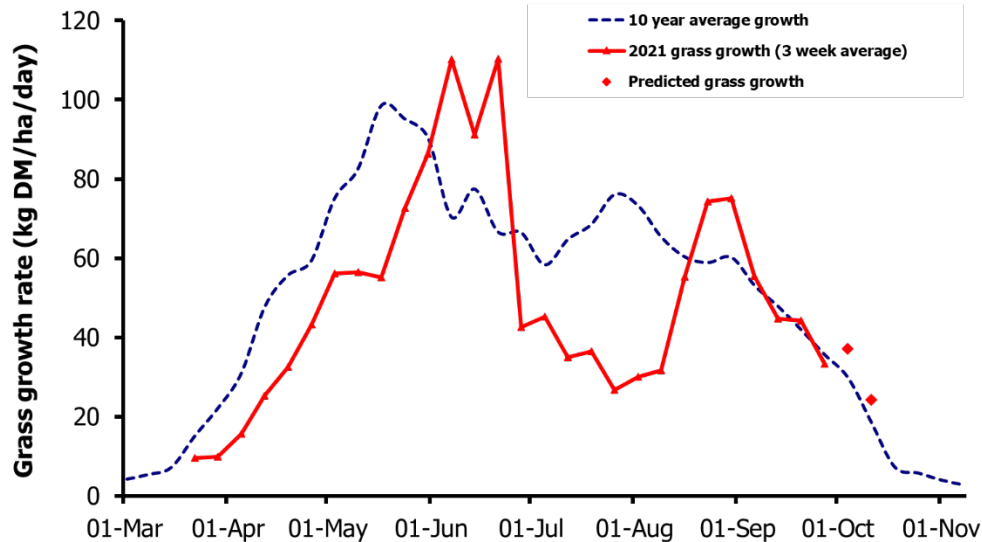
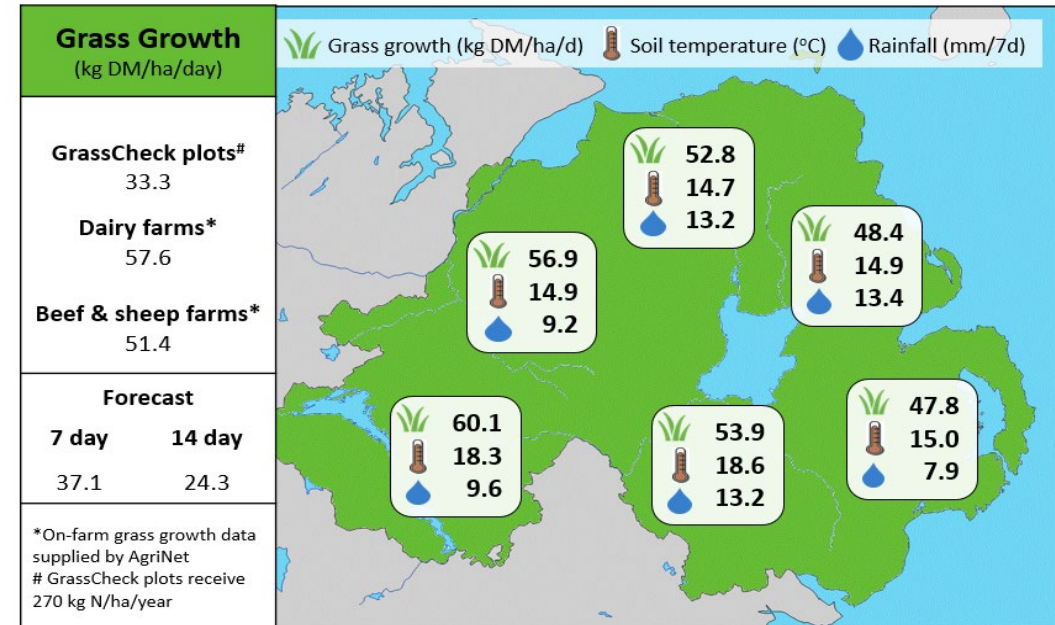


Week Beginning 27th September 2021



MANAGEMENT NOTES:

- September grass growth on farm is slightly ahead of the LT average, due to good weather conditions. Grass growth is predicted to reduce this week due to lower temperatures and less daylight hours.
- Peak AFC should have been hit over the past 10 days. High covers (3,500 – 4,000 kg DM/ha) present challenges as rainfall increases, however they are a necessary evil to extend grass into Oct and Nov.
- Avoid grazing heavy covers on wet days and use strip wires for 12 hour allocations to avoid cattle travelling over and dirtying excess grass.
- The start of Oct should see the rotation length increase from 35 to 40



Value of Grass		Grass Quality	
Dairy – maintenance plus (M+) (kg/cow/day)*	10.5	DM (%)	14.7
Growing animals – daily live weight gain (kg/head/day)**	0.92	CP (% DM)	19.0
*M+ calculated assuming: 650kg cow, and 13.5 kg DMI. Maintenance=75 MJ/day, 5.3 MJ/kg milk **Beef daily gain assuming: 300 kg beef steer, and 6.6 kg DMI. Maintenance=35 MJ/day, 40 MJ/kg gain		WSC (% DM)	9.5
		ME (MJ/kg DM)	10.9