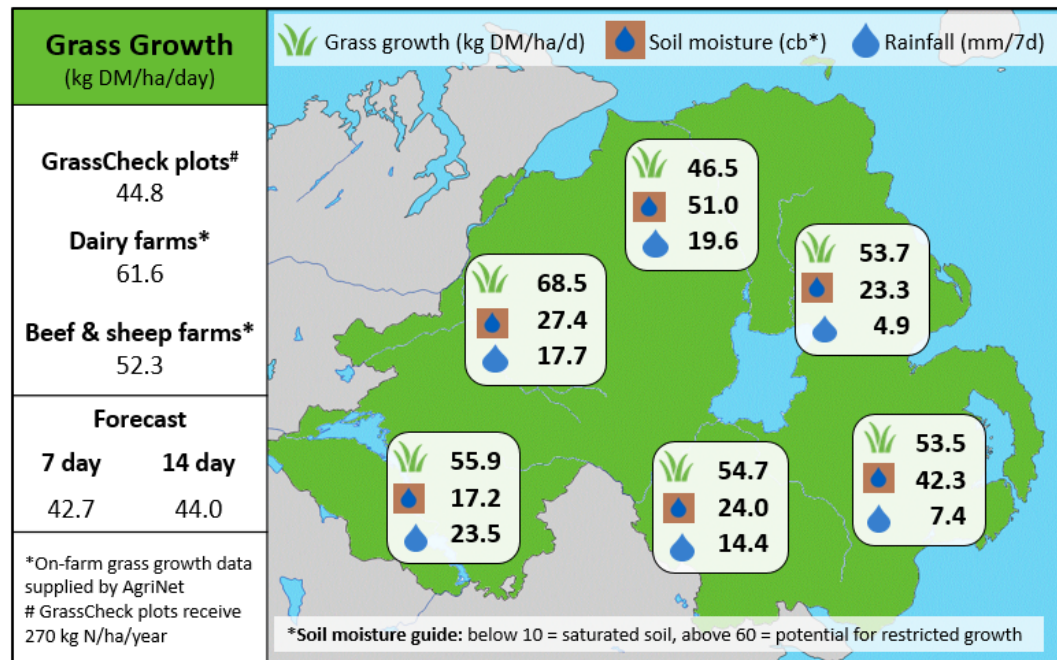
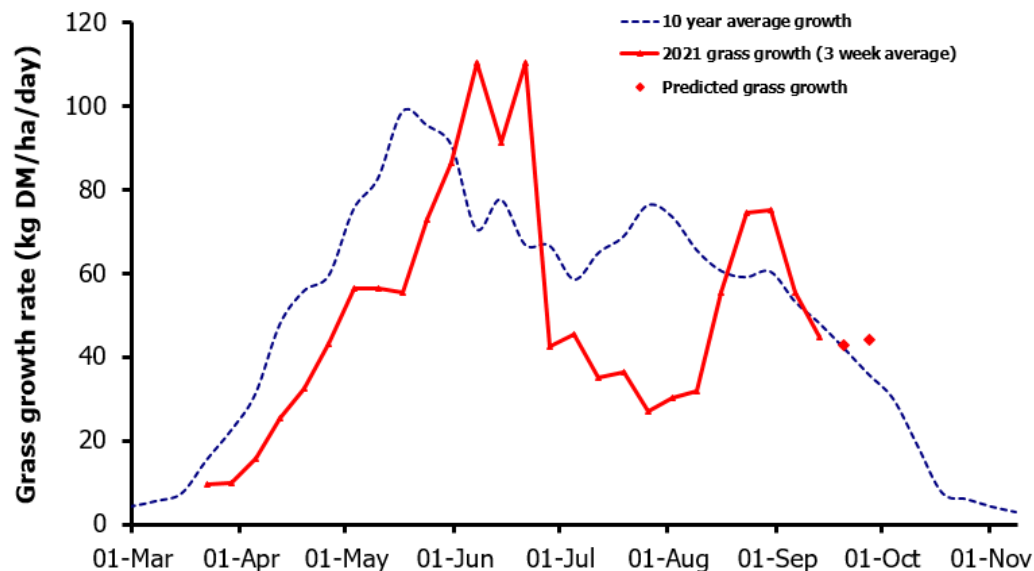


Week Beginning 13th September 2021



MANAGEMENT NOTES:

- Grass growth rates are relatively consistent with the long term average.
- Grazing conditions are superb for September, with light/moderate rainfall set to continue, leading to high grass quality and good grass utilisation.
- Make the most of the good conditions to graze heavier areas and any high grass covers (>3,500 kg DM/ha), using 12 hour allocations if necessary.
- Measure grass weekly to maintain average farm cover (AFC), which should peak this week before growth rates begin to fall off (2,700 Kg DM/ha).
- Every extra day at grass in the Autumn is valuable and only possible if the bank of grass has been built in Aug & Sept. Manage supply & demand.

	Value of Grass	Grass Quality	
Dairy – maintenance plus (M+) (kg/cow/day)*	10.3	DM (%)	14.5
Growing animals – daily live weight gain (kg/head/day)**	0.91	CP (% DM)	20.1
*M+ calculated assuming: 650kg cow, and 13.5 kg DMI. Maintenance=75 MJ/day, 5.3 MJ/kg milk **Beef daily gain assuming: 300 kg beef steer, and 6.6 kg DMI. Maintenance=35 MJ/day, 40 MJ/kg gain		WSC (% DM)	6.6
		ME (MJ/kg DM)	10.8