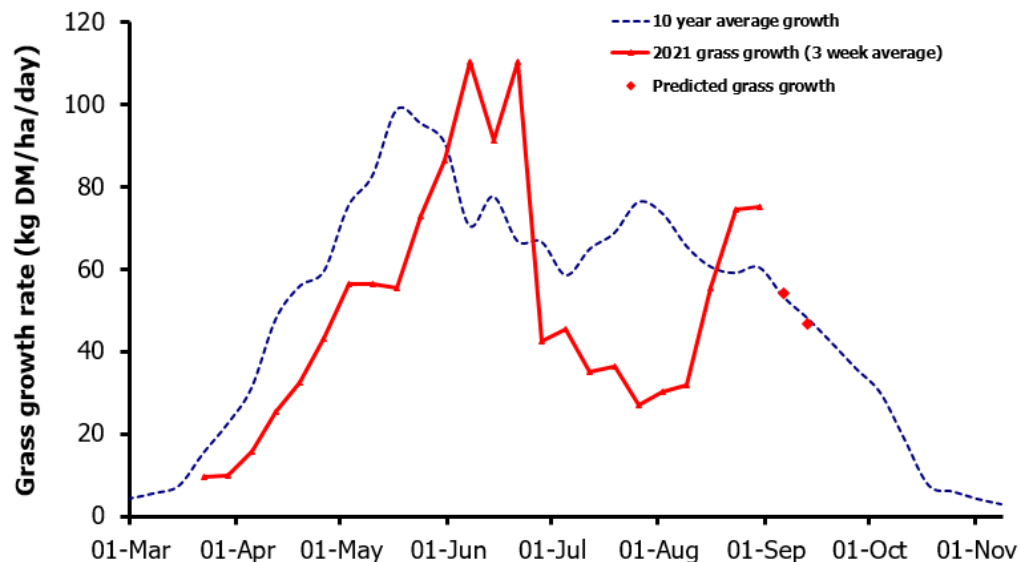
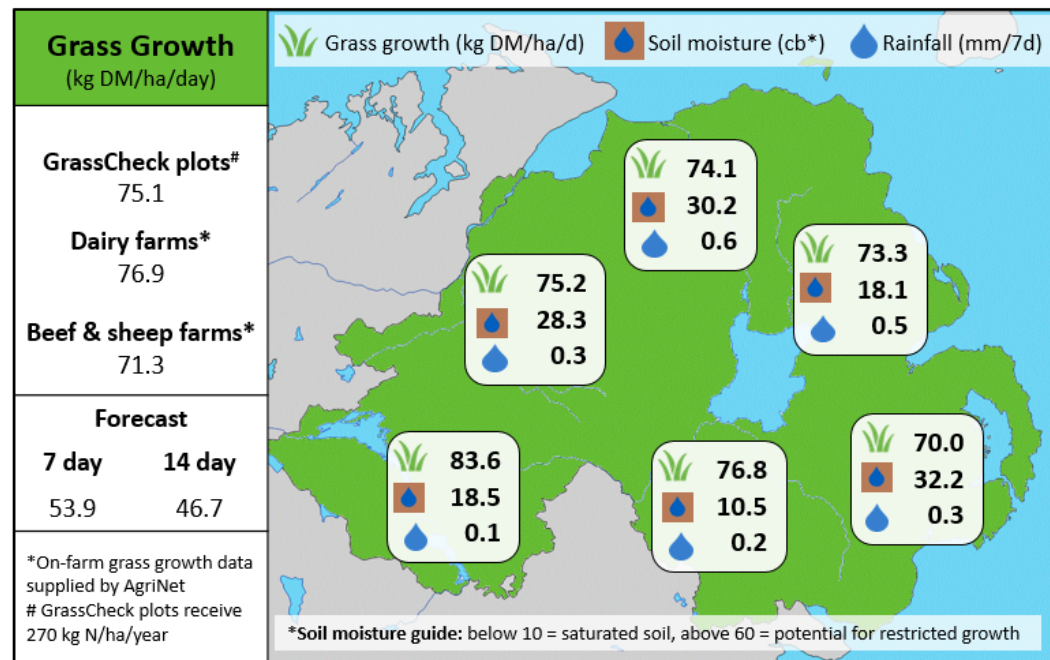


Week Beginning 30th August 2021



MANAGEMENT NOTES:

- Plot growth this week is 15 Kg DM/ha ahead of the long-term average.
- Following a much needed burst of grass, growth forecasts show a return to the long-term average over the incoming fortnight.
- Complete an Autumn grass budget and walk the farm weekly
- A bank of grass should now have been built up (AFC 2,600Kg DM/ha).
- Continue to increase rotation length to 35 days by mid-September and aim for an Av. farm cover peak of 2,700 kg DM/ha by mid-September.
- Grass quality has declined on farm this week. Aim to have all poorly grazed swards cleaned out by early September to grow clean covers.
- Fertiliser sown this week will have a greater response than in mid-Sept



	Value of Grass	Grass Quality	
Dairy – maintenance plus (M+) (kg/cow/day)*	12.8	DM (%)	13.4
Growing animals – daily live weight gain (kg/head/day)**	0.87	CP (% DM)	18.8
*M+ calculated assuming: 650kg cow, and 13.5 kg DMI. Maintenance=75 MJ/day, 5.3 MJ/kg milk **Beef daily gain assuming: 300 kg beef steer, and 6.6 kg DMI. Maintenance=35 MJ/day, 40 MJ/kg gain		WSC (% DM)	6.0
		ME (MJ/kg DM)	10.6